

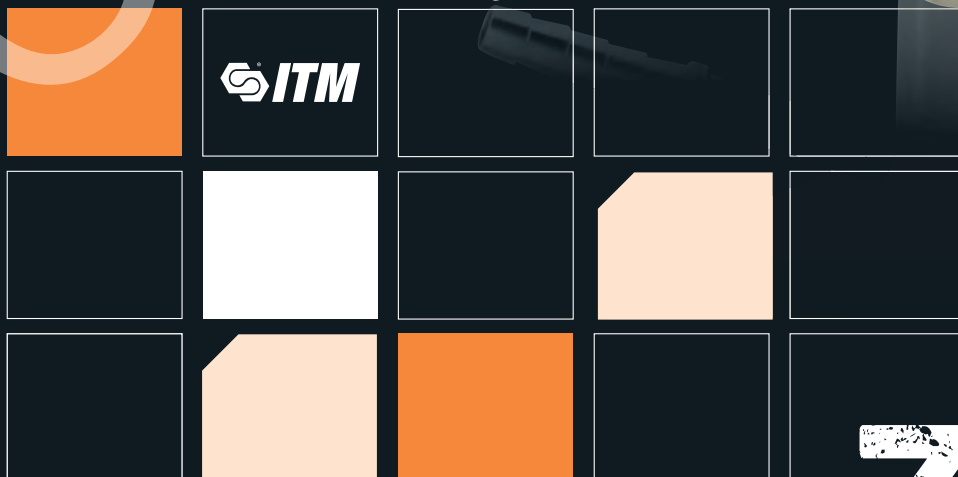
Stainless Steel Fittings and Hygienic Range

PRODUCTS

Hygienic Tubing, Fittings and Valves	1	Plugs, Caps and Locknuts St/Steel Range	5
Hosetails St/Steel Range	3	Elbows, Tees and Crosses St/Steel Range	6
Connectors St/Steel Range	4	Flanges St/Steel Range	7
Sockets St/Steel Range	5		

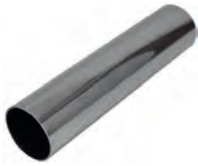


BRANDS



Product ▶ Hygienic Tubing

Hygienic Tube Polished 316L - 3 Mtr Lengths Stocked



TQ QC: 7696

▶▶▶ Full Range Shown Here

Part Number	Size	Price
HP-1-3MTR	1"	91.62
HP-1.5-3MTR	1.1/2"	126.39
HP-2-3MTR	2"	163.98
HP-2.5-3MTR	2.1/2"	201.56
HP-3-3MTR	3"	209.08
HP-4-3MTR	4"	436.49

Hygienic Tube Polished 316L - 6 Mtr Lengths Direct Delivery



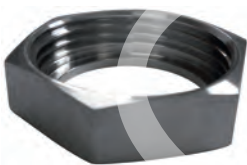
TQ QC: 7697

▶▶▶ Full Range Shown Here

Part Number	Size	Price
HP-1/2-6MTR	1/2"	151.60
HP-3/4-6MTR	3/4"	155.36
HP-1-6MTR	1"	177.86
HP-1.5-6MTR	1.1/2"	247.45
HP-2-6MTR	2"	322.63
HP-2.5-6MTR	2.1/2"	397.80
HP-3-6MTR	3"	412.84
HP-4-6MTR	4"	867.98

Product ▶ General Hygienic RJT Fittings

RJT Hex Nuts 304



TQ QC: 7698



▶▶▶ Full Range Shown Here

Part Number	Size	Price
HFA04-10	1"	9.52
HFA04-15	1.1/2"	12.50
HFA04-20	2"	16.07
HFA04-25	2.1/2"	21.43
HFA04-30	3"	23.50
HFA04-40	4"	28.27

RJT Liner Weld 316L



TQ QC: 7699



▶▶▶ Full Range Shown Here

Part Number	Size	Price
HFA08-10	1"	4.46
HFA08-15	1.1/2"	4.76
HFA08-20	2"	5.06
HFA08-25	2.1/2"	5.66
HFA08-30	3"	6.55
HFA08-40	4"	13.69

RJT Male Part Weld 316L



TQ QC: 7700



▶▶▶ Full Range Shown Here

Part Number	Size	Price
HFA06-10	1"	10.42
HFA06-15	1.1/2"	13.69
HFA06-20	2"	17.56
HFA06-25	2.1/2"	21.73
HFA06-30	3"	25.59
HFA06-40	4"	34.22

RJT Nitrile Joint Ring



TQ QC: 7701



▶▶▶ Full Range Shown Here

Part Number	Size	Price
HFA100-10	1"	1.19
HFA100-15	1.1/2"	0.89
HFA100-20	2"	1.08
HFA100-25	2.1/2"	1.49
HFA100-30	3"	1.54
HFA100-40	4"	2.09

RJT Blank Liner 316L



TQ QC: 7702



▶▶▶ Full Range Shown Here

Part Number	Size	Price
HFA101-10	1"	4.16
HFA101-15	1.1/2"	4.76
HFA101-20	2"	5.66
HFA101-25	2.1/2"	7.15
HFA101-30	3"	8.92
HFA101-40	4"	14.58

AV Type Pipe Clip M10 Boss



TQ QC: 7703



▶▶▶ Full Range Shown Here

Part Number	Size	Also Fits	Price
HFA110-05	1/2"	n/a	15.77
HFA110-075	3/4"	1/2" NB	16.07
HFA110-10	1"	3/4" NB	16.37
HFA110-12	1.1/4"	1" NB	16.67
HFA110-15	1.1/2"	n/a	16.67
HFA110-17	1.3/4"	1.1/4" NB	17.85
HFA110-20	2"	1.1/2" NB	17.26
HFA110-25	2.1/2"	2" NB	18.15
HFA110-30	3"	2.1/2" NB	19.04
HFA110-35	3" NB	n/a	22.32
HFA110-40	4"	DN100	24.70
HFA110-45	4" NB	n/a	29.46

Clamp Welding Ferrules 316L



TQ QC: 7704



▶▶▶ Full Range Shown Here

Part Number	Size	Price
HFE01-050	1/2"	8.33
HFE01-075	3/4"	8.33
HFE01-10	1"	8.63
HFE01-15	1.1/2"	8.92
HFE01-20	2"	10.42
HFE01-25	2.1/2"	12.79
HFE01-30	3"	16.37
HFE01-40	4"	23.50

EPDM Type A Clamp Seals



TQ QC: 7705



▶▶▶ Full Range Shown Here

Part Number	Size	Price
HFE03-050	1/2"	1.49
HFE03-075	3/4"	1.49
HFE03-10	1"	1.79
HFE03-15	1.1/2"	1.79
HFE03-20	2"	2.39
HFE03-25	2.1/2"	2.67
HFE03-30	3"	2.97
HFE03-40	4"	3.57

Universal Heavy Duty Clamp 304



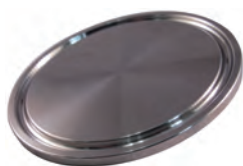
TQ QC: 7706



Full Range Shown Here

Part Number	Size	Price
HFE002-05	1/2" - 3/4"	11.91
HFE002-15	1" - 1.1/2"	13.69
HFE002-20	2"	17.26
HFE002-25	2.1/2"	20.24
HFE002-30	3"	22.32
HFE002-40	4"	29.16

Clamp Blank 316L



TQ QC: 7707



Full Range Shown Here

Part Number	Size	Price
HFE04-050	1/2" - 3/4"	8.92
HFE04-15	1" - 1.1/2"	8.92
HFE04-20	2"	13.09
HFE04-25	2.1/2"	17.56
HFE04-30	3"	23.50
HFE04-40	4" - DN100	39.28

Product

Hygienic RJT Bends & Tees

90 Degree ISO Long Bend 316L



TQ QC: 7708



Full Range Shown Here

Part Number	Size	Price
HFP193-10	1"	11.61
HFP193-15	1.1/2"	16.37
HFP193-20	2"	21.73
HFP193-25	2.1/2"	37.20
HFP193-30	3"	50.59
HFP193-40	4"	105.04

90 Degree BS Short Bend 316L



TQ QC: 7709

Full Range Shown Here

Part Number	Size	Price
HFP191-10	1"	13.39
HFP191-15	1.1/2"	19.04
HFP191-20	2"	29.46
HFP191-25	2.1/2"	45.53
HFP191-30	3"	64.27
HFP191-40	4"	138.08

45 Degree Bend 316L



TQ QC: 7710

Full Range Shown Here

Part Number	Size	Price
HFP197-10	1"	10.71
HFP197-15	1.1/2"	15.47
HFP197-20	2"	21.13
HFP197-25	2.1/2"	36.90
HFP197-30	3"	42.26
HFP197-40	4"	82.13

We can supply the full range of RJT and IDF Stainless Steel Hygienic Fittings

Equal Full Tee 316L



TQ QC: 7711

Full Range Shown Here

Part Number	Size	Price
HFP201-05	1/2"	26.78
HFP201-06	3/4"	32.74
HFP201-10	1"	14.28
HFP201-15	1.1/2"	22.32
HFP201-20	2"	34.22
HFP201-25	2.1/2"	49.69
HFP201-30	3"	63.97
HFP201-40	4"	112.49

Equal Pulled Tee 316L



TQ QC: 7712

Full Range Shown Here

Part Number	Size	Price
HFP203-10	1"	11.61
HFP203-15	1.1/2"	17.85
HFP203-20	2"	22.62
HFP203-25	2.1/2"	44.93
HFP203-30	3"	53.26
HFP203-40	4"	108.32

Coned Concentric Reducers 316L

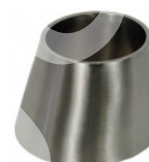


TQ QC: 7713

Full Range Shown Here

Part Number	Size	Price
HFP06-10	1" x 1/2"	20.83
HFP06-15	1.1/2" x 1"	11.31
HFP06-20	2" x 1"	17.85
HFP06-25	2.1/2" x 1"	31.55
HFP06-30	3" x 1"	39.87
HFP07-20	2" x 1.1/2"	14.58
HFP07-30	3" x 1.1/2"	30.65
HFP07-40	4" x 1.1/2"	72.91
HFP08-25	2.1/2" x 2"	16.37
HFP08-30	3" x 2"	17.56
HFP08-40	4" x 2"	49.10
HFP09-40	4" x 2.1/2"	42.56
HFP100-40	4" x 3"	26.49

Coned Eccentric Reducers 316L



TQ QC: 7714

Full Range Shown Here

Part Number	Size	Price
HFP101-075	3/4" x 1/2"	37.50
HFP101-10	1" x 1/2"	43.44
HFP101-11	1" x 3/4"	26.78
HFP101-15	1.1/2" x 1"	16.37
HFP101-20	2" x 1"	29.46
HFP101-25	2.1/2" x 1"	55.05
HFP101-30	3" x 1"	76.48
HFP102-20	2" x 1.1/2"	16.37
HFP102-25	2.1/2" x 1.1/2"	29.46
HFP102-30	3" x 1.1/2"	52.97
HFP103-25	2.1/2" x 2"	17.56
HFP103-30	3" x 2"	37.20
HFP103-40	4" x 2"	63.97
HFP104-40	4" x 2.1/2"	22.91
HFP105-40	4" x 3"	49.10

RJT Spanners



TQ QC: 7715

Full Range Shown Here

Part Number	Size	Price
HFA107-10	1"	31.84
HFA107-15	1.1/2"	46.42
HFA107-20	2"	53.26
HFA107-25	2.1/2"	60.41
HFA107-30	3"	77.07
HFA107-40	4"	98.20

Product

Hygienic Valving

CSE Butterfly Valve Plain 316L



TQ QC: 7716

Full Range Shown Here

Part Number	Size	Price
HBVM2-10C	1"	145.84
HBVM2-15C	1.1/2"	157.75
HBVM2-20C	2"	190.44
HBVM2-25C	2.1/2"	226.15
HBVM2-30C	3"	273.77
HBVM2-40C	4"	476.12
HBVC2-08	Pull Handle suits 1" - 3" B.V	18.80
HBVC2-09	Pull Handle suits 4" B.V	31.32

Non Return Valves Weld Ends



TQ QC: 7717

Full Range Shown Here

Part Number	Size	Price
HNRV95-10C	1"	214.26
HNRV95-15C	1.1/2"	232.11
HNRV95-20C	2"	267.82
HNRV95-25C	2.1/2"	321.37
HNRV95-30C	3"	386.85
HNRV95-40C	4"	505.88

Product **Hosetails St/Steel**

Hose Connector BSPT



FN QC: 1806

316

1 More Variant available online, or Call Us

Part Number	BSPT Male Thread	Hose I/D	Price
SSMH02/02	1/8"	1/8"	5.12
SSMH02/04	1/8"	1/4"	4.29
SSMH04/04	1/4"	1/4"	3.87
SSMH04/05	1/4"	5/16"	4.14
SSMH04/06	1/4"	3/8"	4.37
SSMH04/08	1/4"	1/2"	4.37
SSMH06/06	3/8"	3/8"	5.12
SSMH06/08	3/8"	1/2"	5.40
SSMH08/04	1/2"	1/4"	7.83
SSMH08/06	1/2"	3/8"	8.69
SSMH08/08	1/2"	1/2"	8.69
SSMH08/10	1/2"	5/8"	10.04
SSMH08/12	1/2"	3/4"	11.43
SSMH08/16	1/2"	1"	16.11
SSMH12/08	3/4"	1/2"	13.34
SSMH12/12	3/4"	3/4"	13.34
SSMH16/12	1"	3/4"	23.69
SSMH16/16	1"	1"	15.19
SSMH16/20	1"	1.1/4"	29.77
SSMH20/20	1.1/4"	1.1/4"	15.58
SSMH24/24	1.1/2"	1.1/2"	15.83
SSMH32/32	2"	2"	25.34
SSMH40/40	2.1/2"	2.1/2"	49.52
SSMH48/48	3"	3"	107.41
SSMH64/64	4"	4"	113.70

Hose Connector BSPP Coned Nut



FR QC: 1807

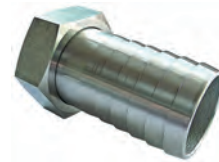
316

2 More Variants available online, or Call Us

Part Number	BSPP Female Thread	Hose I/D	Price
SSFHC06/06	3/8"	3/8"	10.49
SSFHC08/08	1/2"	1/2"	11.07
SSFHC12/12	3/4"	3/4"	23.30
SSFHC16/12	1"	3/4"	48.60
SSFHC16/16	1"	1"	48.60
SSFHC24/24	1.1/2"	1.1/2"	112.22
SSFHC32/32	2"	2"	144.85

See the full range of sizes on our website

Hose Connector BSPP Flat Face



FU QC: 1808

316

1 More Variant available online, or Call Us

Part Number	BSPP Female Thread	Hose I/D	Price
SSFHW06/06	3/8"	3/8"	16.24
SSFHW08/06	1/2"	3/8"	22.67
SSFHW08/08	1/2"	1/2"	22.67
SSFHW12/12	3/4"	3/4"	35.12
SSFHW16/16	1"	1"	46.43
SSFHW24/24	1.1/2"	1.1/2"	95.86
SSFHW32/32	2"	2"	163.12

Hose Connector BSPP Fixed



FQ QC: 1809

316

4 More Variants available online, or Call Us

Part Number	BSPP Female Thread	Hose I/D	Price
SSFFH02/04	1/8"	1/4"	12.38
SSFFH08/08	1/2"	1/2"	20.09
SSFFH12/12	3/4"	3/4"	29.60
SSFFH16/16	1"	1"	35.03
SSFFH20/20	1.1/4"	1.1/4"	49.22
SSFFH24/24	1.1/2"	1.1/2"	63.40

Hose Repair Connector



FP QC: 1810

316

Full Range Shown Here

Part Number	Hose I/D 1	Hose I/D 2	Price
SSHRC04/04	1/4"	1/4"	4.54
SSHRC05/05	5/16"	5/16"	4.14
SSHRC06/06	3/8"	3/8"	4.86
SSHRC08/08	1/2"	1/2"	5.22
SSHRC12/12	3/4"	3/4"	15.38
SSHRC16/16	1"	1"	14.18
SSHRC20/20	1.1/4"	1.1/4"	25.82
SSHRC24/24	1.1/2"	1.1/2"	29.47
SSHRC32/32	2"	2"	26.52

Product **Connectors St/Steel**

Equal Hex Nipple BSPT



FW QC: 1811

316

Full Range Shown Here

Part Number	BSPT Male Thread 1	BSPT Male Thread 2	Price
SSSEC02	1/8"	1/8"	2.01
SSSEC04	1/4"	1/4"	2.01
SSSEC06	3/8"	3/8"	2.68
SSSEC08	1/2"	1/2"	3.14
SSSEC12	3/4"	3/4"	4.43
SSSEC16	1"	1"	6.06
SSSEC20	1.1/4"	1.1/4"	7.98
SSSEC24	1.1/2"	1.1/2"	9.82
SSSEC32	2"	2"	14.03

Double Bodied Union Coned BSPP



FN QC: 1812

316

Full Range Shown Here

Part Number	BSPP Male Thread 1	BSPP Male Thread 2	Price
SSDB04/04	1/4"	1/4"	12.42
SSDB06/06	3/8"	3/8"	14.22
SSDB08/08	1/2"	1/2"	21.60
SSDB12/12	3/4"	3/4"	32.40
SSDB16/16	1"	1"	48.60
SSDB20/20	1.1/4"	1.1/4"	58.15
SSDB24/24	1.1/2"	1.1/2"	67.29
SSDB32/32	2"	2"	105.61

Barrel Nipple BSPT



FP QC: 1813

316

Full Range Shown Here

Part Number	BSPT Male Thread	Length (mm)	Price
SSBEC02	1/8"	30	3.54
SSBEC04	1/4"	40	2.73
SSBEC06	3/8"	40	2.22
SSBEC08	1/2"	60	4.24
SSBEC12	3/4"	60	4.64
SSBEC16	1"	60	5.95
SSBEC20	1.1/4"	80	9.88
SSBEC24	1.1/2"	80	11.40
SSBEC32	2"	100	16.34

We carry a large range of Stainless Steel Hydraulic QRC's in Section 2

Running Nipple BSPP



FQ QC: 1814

316

2 More Variants available online, or Call Us

Part Number	BSP Male Thread	Price
SSCEC06	3/8"	6.00
SSCEC08	1/2"	8.57
SSCEC12	3/4"	10.33
SSCEC16	1"	14.05
SSCEC20	1.1/4"	6.36
SSCEC32	2"	13.81

Welding Nipple BSPT



FR QC: 1815

316

3 More Variants available online, or Call Us

Part Number	BSPT Male Thread	Price
SSWN08	1/2"	2.32
SSWN12	3/4"	2.92
SSWN16	1"	4.85
SSWN20	1.1/4"	7.27
SSWN24	1.1/2"	6.66
SSWN32	2"	10.29

For Hydraulic Compression see Section 8

Reducing Hex Nipple BSPT



FW QC: 1816

316

5 More Variants available online, or Call Us

Part Number	BSPT Male Thread 1	BSPT Male Thread 2	Price
SSRC04/02	1/4"	1/8"	2.22
SSRC06/04	3/8"	1/4"	2.68
SSRC08/02	1/2"	1/8"	3.17
SSRC08/04	1/2"	1/4"	3.54
SSRC08/06	1/2"	3/8"	3.54
SSRC12/02	3/4"	1/8"	4.71
SSRC12/06	3/4"	3/8"	4.43
SSRC12/08	3/4"	1/2"	4.43
SSRC16/06	1"	3/8"	5.67
SSRC16/08	1"	1/2"	6.17
SSRC16/12	1"	3/4"	6.17
SSRC20/08	1.1/4"	1/2"	8.75
SSRC20/16	1.1/4"	1"	11.60
SSRC24/08	1.1/2"	1/2"	13.29
SSRC24/12	1.1/2"	3/4"	11.60
SSRC24/16	1.1/2"	1"	11.60
SSRC24/20	1.1/2"	1.1/4"	11.60
SSRC32/12	2"	3/4"	16.61
SSRC32/16	2"	1"	16.61
SSRC32/20	2"	1.1/4"	16.61
SSRC32/24	2"	1.1/2"	16.61

Equal Union BSPT x Coned BSPP



FW QC: 1817

316

1 More Variant available online, or Call Us

Part Number	BSPT Male Thread	BSPP Female Thread	Price
SSMFEU04	1/4"	1/4"	7.42
SSMFEU06	3/8"	3/8"	8.24
SSMFEU08	1/2"	1/2"	9.80
SSMFEU12	3/4"	3/4"	13.42
SSMFEU16	1"	1"	19.05
SSMFEU20	1.1/4"	1.1/4"	25.11
SSMFEU24	1.1/2"	1.1/2"	32.27
SSMFEU32	2"	2"	44.58

Bush BSPT x BSPP



FR QC: 1818

316

▶▶▶ 1 More Variant available online, or Call Us

Part Number	BSPT Male Thread	BSPP Female Thread	Price
SSMFB04/02	1/4"	1/8"	1.67
SSMFB06/02	3/8"	1/8"	1.91
SSMFB06/04	3/8"	1/4"	1.91
SSMFB08/02	1/2"	1/8"	2.11
SSMFB08/04	1/2"	1/4"	2.22
SSMFB08/06	1/2"	3/8"	2.22
SSMFB12/04	3/4"	1/4"	3.38
SSMFB12/06	3/4"	3/8"	3.32
SSMFB12/08	3/4"	1/2"	3.05
SSMFB16/04	1"	1/4"	4.90
SSMFB16/06	1"	3/8"	4.70
SSMFB16/08	1"	1/2"	4.70
SSMFB16/12	1"	3/4"	4.52
SSMFB20/08	1.1/4"	1/2"	7.09
SSMFB20/12	1.1/4"	3/4"	7.09
SSMFB20/16	1.1/4"	1"	6.48
SSMFB24/08	1.1/2"	1/2"	9.32
SSMFB24/12	1.1/2"	3/4"	8.66
SSMFB24/16	1.1/2"	1"	9.10
SSMFB24/20	1.1/2"	1.1/4"	9.82
SSMFB32/12	2"	3/4"	13.83
SSMFB32/16	2"	1"	14.75
SSMFB32/20	2"	1.1/4"	15.51
SSMFB32/24	2"	1.1/2"	13.65

Product

▶ Sockets St/Steel

Equal Union Coned BSPP



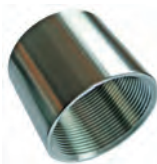
FW QC: 1819

316

▶▶▶ Full Range Shown Here

Part Number	BSPP Female Thread	Price
SSFEU02	1/8"	6.28
SSFEU04	1/4"	6.28
SSFEU06	3/8"	7.09
SSFEU08	1/2"	8.20
SSFEU12	3/4"	11.34
SSFEU16	1"	15.83
SSFEU20	1.1/4"	21.84
SSFEU24	1.1/2"	26.02
SSFEU32	2"	38.32

Full Socket BSPP



FQ QC: 1820

316

▶▶▶ Full Range Shown Here

Part Number	BSPP Female Thread	Price
SSFFA02	1/8"	1.67
SSFFA04	1/4"	1.90
SSFFA06	3/8"	2.01
SSFFA08	1/2"	2.90
SSFFA12	3/4"	3.68
SSFFA16	1"	5.63
SSFFA20	1.1/4"	8.49
SSFFA24	1.1/2"	9.62
SSFFA32	2"	15.05

Half Socket BSPP



FR QC: 1821

316

▶▶▶ Full Range Shown Here

Part Number	BSPP Female Thread	Price
SSHFFA02	1/8"	1.67
SSHFFA04	1/4"	1.76
SSHFFA06	3/8"	2.01
SSHFFA08	1/2"	2.68
SSHFFA12	3/4"	3.68
SSHFFA16	1"	5.23
SSHFFA20	1.1/4"	4.62
SSHFFA24	1.1/2"	6.07
SSHFFA32	2"	9.35



For Stainless Steel Valves
see Section 19

Reducer BSPP



FR QC: 1822

316

▶▶▶ 4 More Variants available online, or Call Us

Part Number	BSPP Female Thread 1	BSPP Female Thread 2	Price
SSFFR04/02	1/4"	1/8"	2.12
SSFFR06/02	3/8"	1/8"	2.68
SSFFR06/04	3/8"	1/4"	2.68
SSFFR08/04	1/2"	1/4"	3.23
SSFFR08/06	1/2"	3/8"	3.23
SSFFR12/08	3/4"	1/2"	4.43
SSFFR16/04	1"	1/4"	6.91
SSFFR16/06	1"	3/8"	6.91
SSFFR16/08	1"	1/2"	6.91
SSFFR16/12	1"	3/4"	6.91
SSFFR20/08	1.1/4"	1/2"	9.82
SSFFR20/16	1.1/4"	1"	9.82
SSFFR24/12	1.1/2"	3/4"	12.84
SSFFR24/16	1.1/2"	1"	12.84
SSFFR24/20	1.1/2"	1.1/4"	12.84
SSFFR32/12	2"	3/4"	18.11
SSFFR32/16	2"	1"	18.11
SSFFR32/20	2"	1.1/4"	18.11
SSFFR32/24	2"	1.1/2"	18.11

Product

▶ Plugs Caps & Lock Nuts St/Steel

Hexagon Plug BSPT



FR QC: 1823

316

▶▶▶ Full Range Shown Here

Part Number	BSPT Male Thread	Price
SSPBT02	1/8"	1.49
SSPBT04	1/4"	1.55
SSPBT06	3/8"	1.85
SSPBT08	1/2"	2.60
SSPBT12	3/4"	3.32
SSPBT16	1"	4.61
SSPBT20	1.1/4"	6.34
SSPBT24	1.1/2"	8.16
SSPBT32	2"	12.35

Hexagon Plug NPT



FW QC: 1824

316

▶▶▶ 3 More Variants available online, or Call Us

Part Number	NPT Male	Price
SSPBTN02	1/8"	4.85
SSPBTN04	1/4"	6.86
SSPBTN16	1"	22.50

Square Headed Plug BSPT



FR QC: 1825

316

Full Range Shown Here

Part Number	BSPT Male Thread	Price
SSQPBT02	1/8"	1.37
SSQPBT04	1/4"	1.37
SSQPBT06	3/8"	1.47
SSQPBT08	1/2"	2.01
SSQPBT12	3/4"	2.48
SSQPBT16	1"	3.97
SSQPBT20	1.1/4"	4.93
SSQPBT24	1.1/2"	6.66
SSQPBT32	2"	9.69

Allen Key Plug NPT



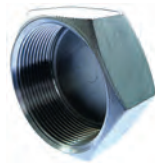
FO QC: 1828

316

Full Range Shown Here

Part Number	NPT Male Thread	Price
SSAKN02	1/8"	2.96
SSAKN04	1/4"	3.63
SSAKN06	3/8"	6.22
SSAKN08	1/2"	6.97
SSAKN12	3/4"	14.86
SSAKN16	1"	16.67

Cap Female Plug BSPP



FW QC: 1829

316

Full Range Shown Here

Part Number	BSPP Female Thread	Price
SSCAP02	1/8"	1.47
SSCAP04	1/4"	1.67
SSCAP06	3/8"	1.85
SSCAP08	1/2"	2.30
SSCAP12	3/4"	3.83
SSCAP16	1"	4.99
SSCAP20	1.1/4"	7.39
SSCAP24	1.1/2"	9.14
SSCAP32	2"	13.98

Equal Elbow BSPP



FR QC: 1831

316

Full Range Shown Here

Part Number	BSPP Female Thread	Price
SSFEL02	1/8"	2.41
SSFEL04	1/4"	2.18
SSFEL06	3/8"	2.63
SSFEL08	1/2"	3.29
SSFEL12	3/4"	4.72
SSFEL16	1"	7.35
SSFEL20	1.1/4"	11.96
SSFEL24	1.1/2"	14.04
SSFEL32	2"	21.60

45 deg Equal Elbow BSPP



FW QC: 1832

316

2 More Variants available online, or Call Us

Part Number	BSPP Female Thread	Price
SSFEL0445	1/4"	2.96
SSFEL0845	1/2"	3.83
SSFEL1245	3/4"	5.92
SSFEL1645	1"	8.78
SSFEL2045	1.1/4"	11.74
SSFEL2445	1.1/2"	15.03
SSFEL3245	2"	22.05

Non Catalogue Items
we can source from all major manufacturers

Blanking Plug BSPP



DE QC: 1826

316



Full Range Shown Here

Part Number	BSPP Male Thread	Price
SSAKC02	1/8"	21.24
SSAKC04	1/4"	23.76
SSAKC06	3/8"	26.29
SSAKC08	1/2"	26.57

Allen Key Plug BSPT



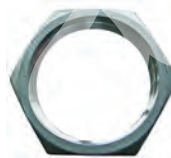
FO QC: 1827

316

Full Range Shown Here

Part Number	BSPT Male Thread	Price
SSAK02	1/8"	3.43
SSAK04	1/4"	3.15
SSAK06	3/8"	6.22
SSAK08	1/2"	6.97
SSAK12	3/4"	14.86
SSAK16	1"	16.67

Lock Nut BSPP



FR QC: 1830

316

Full Range Shown Here

Part Number	BSPP Female Thread	Price
SSLN02	1/8"	1.47
SSLN04	1/4"	1.47
SSLN06	3/8"	1.76
SSLN08	1/2"	2.12
SSLN12	3/4"	2.40
SSLN16	1"	2.84
SSLN20	1.1/4"	3.77
SSLN24	1.1/2"	4.38
SSLN32	2"	6.34

Product **Elbows Tees & Crosses St/Steel**

DICSA 5

For our new range of Stainless Steel Hydraulic Hose Fittings see Section 5

Elbow BSPT x BSPP

FQ QC: 1833

316

▶▶▶ Full Range Shown Here

Part Number	BSPT Male Thread	BSPP Female Thread	Price
SSMFL02	1/8"	1/8"	3.29
SSMFL04	1/4"	1/4"	3.29
SSMFL06	3/8"	3/8"	3.83
SSMFL08	1/2"	1/2"	4.81
SSMFL12	3/4"	3/4"	6.04
SSMFL16	1"	1"	9.77
SSMFL20	1.1/4"	1.1/4"	15.03
SSMFL24	1.1/2"	1.1/2"	18.21
SSMFL32	2"	2"	27.31

Equal Tee BSPP

FW QC: 1834

316

▶▶▶ Full Range Shown Here

Part Number	BSPP Female Thread	Price
SSFET02	1/8"	2.84
SSFET04	1/4"	2.84
SSFET06	3/8"	6.36
SSFET08	1/2"	4.43
SSFET12	3/4"	6.06
SSFET16	1"	10.26
SSFET20	1.1/4"	16.11
SSFET24	1.1/2"	20.72
SSFET32	2"	29.72

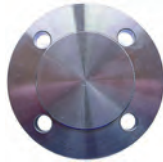
Equal Cross BSPP

FR QC: 1835

316

▶▶▶ 3 More Variants available online, or Call Us

Part Number	BSPP Female Thread	Price
SSCX04	1/4"	5.04
SSCX08	1/2"	7.67
SSCX12	3/4"	10.63
SSCX16	1"	15.46
SSCX24	1.1/2"	29.17
SSCX32	2"	43.42

Blind Flange PN16/8

GA QC: 1836

316

▶▶▶ 2 More Variants available online, or Call Us

Part Number	Nominal Size Inch (mm)	No. of Holes	Diameter & Length of Bolt	Price
SSBLFLA16	1" (25)	4	M12 .55	37.95
SSBLFLA20	1.1/4" (32)	4	M16 .55	53.72
SSBLFLA24	1.1/2" (40)	4	M16 .55	67.01
SSBLFLA32	2" (50)	4	M16 .65	79.61

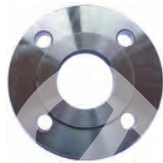
Screwed Flange PN16/4

FY QC: 1837

316

▶▶▶ Full Range Shown Here

Part Number	Nominal Size Inch (mm)	No. of Holes	Diameter & Length of Bolt	Price
SSSCFLA08	1/2" (15)	4	M12 .50	44.91
SSSCFLA12	3/4" (20)	4	M12 .55	61.96
SSSCFLA16	1" (25)	4	M12 .55	71.29
SSSCFLA20	1.1/4" (32)	4	M16 .55	101.35
SSSCFLA24	1.1/2" (40)	4	M16 .55	111.58
SSSCFLA32	2" (50)	4	M16 .65	137.79

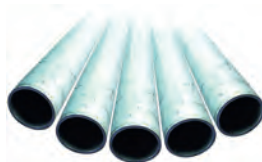
Slip-on Flange PN16/3

GA QC: 1838

316

▶▶▶ 1 More Variant available online, or Call Us

Part Number	Nominal Size Inch (mm)	No. of Holes	Diameter & Length of Bolt	Price
SSSFLA12	3/4" (20)	4	M12 .55	30.33
SSSFLA16	1" (25)	4	M12 .55	37.32
SSSFLA20	1.1/4" (32)	4	M16 .55	58.15
SSSFLA24	1.1/2" (40)	4	M16 .55	55.45
SSSFLA32	2" (50)	4	M16 .65	79.61

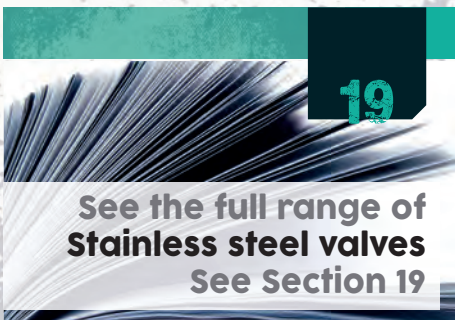
Tube Schedule 40 316 Stainless

GC QC: 1839

316

▶▶▶ Full Range Shown Here

Part Number	Nominal Bore	Length (M)	Price
SSTUBE04	1/4"	3	63.07
SSTUBE06	3/8"	3	78.72
SSTUBE08	1/2"	3	105.79
SSTUBE12	3/4"	3	142.69
SSTUBE16	1"	3	198.15
SSTUBE20	1.1/4"	3	277.33
SSTUBE24	1.1/2"	3	314.23
SSTUBE32	2"	3	430.97

Product ▶ Flanges St/Steel

See the full range of
Stainless steel valves
See Section 19