

Hydraulic Compression

PRODUCTS

VOSS Compression Fittings (COMPLETE)	1	Bonded Seals and O'Rings	19
VOSS Compression Fittings (BODY ONLY)	9	Eaton Walterscheid Range	20
VOSS Form / SAE / ZAKO Flanges and Component Parts	17	Parker EO Range	24
VOSS SAE / Flanges and Component Parts c/w Nuts and Olives	18	Hydraulic Tube Clamps and Accessories	28
VOSS Pre-Assembly Hand Tools and Machines	18	Parker Tube Clamps Light and Heavy Series	32
		Hydraulic and Stainless Steel Tubing	32

BRANDS

	LMC	VOSS		
		EATON		
				

Product ▶ VOSS Cutting Rings

1S Cutting Ring - (LL) Series Steel



FE QC: 4267



▶▶▶ 3 More Variants available online, or Call Us

Part Number	Tube O/D (mm)	Series	Pressure bar	Price
24-1S-LL6	6	LL	PN 100	0.33

2S Cutting Ring - (L) (S) Series - Hardened Stainless



FE QC: 4269



▶▶▶ 15 More Variants available online, or Call Us

Part Number	Tube O/D (mm)	Series	Pressure bar	Price
24-2S-L22-SST-C62	22	L	PN 160	8.24

VossRingM - Cutting Ring - (L) & (S) Series



FE QC: 4270



▶▶▶ 3 More Variants available online, or Call Us

Part Number	Tube O/D (mm)	Series	Pressure bar	Price
24-VRM-L/S8	8	L/S	PN500/800	0.34
24-VRM-L/S10	10	L/S	PN500/800	0.38
24-VRM-L/S12	12	L/S	PN400/630	0.43
24-VRM-L15	15	L	PN400	0.50
24-VRM-L18	18	L	PN400	0.72
24-VRM-L22	22	L	PN250	0.84
24-VRM-L28	28	L	PN250	1.00
24-VRM-L42	42	L	PN250	2.30
24-VRM-S14	14	S	PN630	0.81
24-VRM-S16	16	S	PN630	0.77
24-VRM-S20	20	S	PN420	1.00
24-VRM-S30	30	S	PN420	1.58
24-VRM-S38	38	S	PN420	2.15

ES-4 Cutting Ring - (L) (S) Series - Steel



FE QC: 4271



▶▶▶ 14 More Variants available online, or Call Us

Part Number	Tube O/D (mm)	Series	Pressure bar	Price
24-ES4-L42	42	L	PN 250	14.08
24-ES4-S16	16	S	PN 630	3.84

ES-4 Cutting Ring - (L) (S) Series - Hardened Stainless



FE QC: 4272



▶▶▶ 15 More Variants available online, or Call Us

Part Number	Tube O/D (mm)	Series	Pressure bar	Price
24-ES4-L22-SST	22	L	PN 250	16.29

Product ▶ VOSS Nuts

Union Nuts Steel - (LL) (L) (S) Series



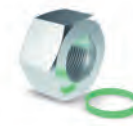
FE QC: 4273



▶▶▶ 5 More Variants available online, or Call Us

Part Number	Tube O/D (mm)	Series	Metric F/ male	Pressure bar	Price
24-N-LL6	6	LL	M 10 x 1	PN 100	0.31
24-N-L6	6	L	M 12 x 1.5	PN 500	0.34
24-N-L10	10	L	M 16 x 1.5	PN 500	0.44
24-N-L12	12	L	M 18 x 1.5	PN 400	0.59
24-N-L15	15	L	M 22 x 1.5	PN 400	0.83
24-N-L18	18	L	M 26 x 1.5	PN 400	1.55
24-N-L22	22	L	M 30 x 2	PN 250	2.14
24-N-L28	28	L	M 36 x 2	PN 250	4.10
24-N-L35	35	L	M 45 x 2	PN 250	5.11
24-N-L42	42	L	M 52 x 2	PN 250	5.61
24-N-S6	6	S	M 14 x 1.5	PN 800	0.40
24-N-S10	10	S	M 18 x 1.5	PN 800	0.65
24-N-S12	12	S	M 20 x 1.5	PN 630	0.76
24-N-S14	14	S	M 22 x 1.5	PN 630	1.15
24-N-S16	16	S	M 24 x 1.5	PN 630	1.57
24-N-S20	20	S	M 30 x 2	PN 420	2.40
24-N-S25	25	S	M 36 x 2	PN 420	4.60
24-N-S30	30	S	M 42 x 2	PN 420	5.70
24-N-S38	38	S	M 52 x 2	PN 420	8.37

SQR-Function Nuts - Steel - (L) (S) Series



FE QC: 4275



▶▶▶ 18 More Variants available online, or Call Us

Part Number	Tube O/D (mm)	Series	Metric F/ male	Pressure bar	Price
24-SQRNMS-L35	35	L	M 45 x 2	PN 250	9.31
24-SQRNMS-L42	42	L	M 52 x 2	PN 250	10.31

Product ▶ BV-10 Fittings

BV-10 Cones - (S) Series



FE QC: 4279



▶▶▶ 25 More Variants available online, or Call Us

Part Number	Series	Metric F/ male	Pressure bar	Price
24-BV10C0-S8X1.5-C19	S	M8 x 1.5	PN 800	7.15

BV-10 Cones - Clamping Rings - (L) (S) Series



FE QC: 4280



▶▶▶ 18 More Variants available online, or Call Us

Part Number	Tube O/D (mm)	Series	Pressure bar	Price
24-BV10R-S8-C19	8	S	PN 800	3.07

BV-10 Cones Union Nuts - (L) (S) Series



FE QC: 4281



▶▶▶ 18 More Variants available online, or Call Us

Part Number	Tube O/D (mm)	Series	Metric F/ male	Pressure bar	Price
24-BV10N-S8	8	S	M 16 x 1.5	PN 800	1.94

BV-10 Cones - Complete Set - (L) (S) Series



FE QC: 4282



▶▶▶ 31 More Variants available online, or Call Us

Part Number	Series	Metric F/ male	Pressure bar	Price
24-BV10S0-L22X2-C19	L	M22 x 2	PN 250	24.04
24-BV10S0-L28X2-C19	L	M28 x 2	PN 250	30.63
24-BV10S0-L28X3-C19	L	M28 x 3	PN 250	30.63
24-BV10S0-L35X3-C19	L	M35 x 3	PN 250	43.92
24-BV10S0-S10X2-C19	S	M10 x 2	PN 800	13.33
24-BV10S0-S12X2-C19	S	M12 x 2	PN 630	14.18
24-BV10S0-S16X3-C19	S	M16 x 3	PN 630	16.44
24-BV10S0-S20X2-C19	S	M20 x 2	PN 420	23.76
24-BV10S0-S30X3-C19	S	M30 x 3	PN 420	45.21
24-BV10S0-S30X4-C19	S	M30 x 4	PN 420	45.21
24-BV10S0-S38X4-C19	S	M38 x 4	PN 420	63.35
24-BV10S0-S38X6-C19	S	M38 x 6	PN 420	65.90

Product ▶ 24/37 Fittings

24/37 Tube- Sleeve - (L) (S) Series

FE QC: 4284

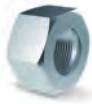


▶▶▶ 12 More Variants available online, or Call Us

Part Number	Tube O/D (mm)	Series	Pressure bar	Price
24-24/37R-L28	28	L	PN 250	3.62
24-24/37R-L42	42	L	PN 250	7.54
24-24/37R-S30	30	S	PN 400	5.02
24-24/37R-S38	38	S	PN 400	8.29

24/37 Tube-Union Nut - (L) (S) Series

FE QC: 4285



▶▶▶ 11 More Variants available online, or Call Us

Part Number	Tube O/D (mm)	Series	Metric F/ male	Pressure bar	Price
24-24/37N-L22-S20	22	S	M 30 x 2	PN 400	4.72
24-24/37N-L28	28	L	M 36 x 2	PN 250	6.18
24-24/37N-L42	42	L	M 52 x 2	PN 250	15.46
24-24/37N-S16	16	S	M 24 x 1.5	PN 630	3.46
24-24/37N-S25	25	S	M 36 x 2	PN 400	8.13
24-24/37N-S30	30	S	M 42 x 2	PN 400	10.35
24-24/37N-S38	38	S	M 52 x 2	PN 400	16.44

24/37 Tube- Complete Set - (L) (S) Series

FE QC: 4286



▶▶▶ 16 More Variants available online, or Call Us

Part Number	Tube O/D (mm)	Series	Pressure bar	Price
24-24/37S0-S14	14	S	PN 630	8.94
24-24/37S0-S16	16	S	PN 630	7.76
24-24/37S0-S30	30	S	PN 400	20.91
24-24/37S0-S38	38	S	PN 400	33.72



Male Stud c/w 60 Deg Coned End (L) (S) Series

FE QC: 4439



▶▶▶ Full Range Shown Here

Part Number	Tube O.D	Series	BSPP Male Thread	Pressure (bar)	Price
24-SDSC-L6-G1/8A	6	L	1/8"	PN400	2.07
24-SDSC-L6-G1/4A	6	L	1/4"	PN400	2.30
24-SDSC-L6-G3/8A	6	L	3/8"	PN400	4.53
24-SDSC-L8-G1/8A	8	L	1/8"	PN400	7.79
24-SDSC-L8-G1/4A	8	L	1/4"	PN400	2.95
24-SDSC-L8-G3/8A	8	L	3/8"	PN400	9.35
24-SDSC-L10-G1/4A	10	L	1/4"	PN400	2.80
24-SDSC-L10-G3/8A	10	L	3/8"	PN400	3.76
24-SDSC-L10-G1/2A	10	L	1/2"	PN400	7.47
24-SDSC-L12-G1/4A	12	L	1/4"	PN400	6.13
24-SDSC-L12-G3/8A	12	L	3/8"	PN400	3.76
24-SDSC-L12-G1/2A	12	L	1/2"	PN400	5.22
24-SDSC-L15-G3/8A	15	L	3/8"	PN400	5.52
24-SDSC-L15-G1/2A	15	L	1/2"	PN400	4.64
24-SDSC-L18-G1/2A	18	L	1/2"	PN400	6.55
24-SDSC-L18-G3/4A	18	L	3/4"	PN400	13.95
24-SDSC-L22-G1/2A	22	L	1/2"	PN200	13.29
24-SDSC-L22-G3/4A	22	L	3/4"	PN200	10.66
24-SDSC-L28-G3/4A	28	L	3/4"	PN200	19.96
24-SDSC-L28-G1A	28	L	1"	PN200	15.07
24-SDSC-L35-G1/1/4A	35	L	1.1/4"	PN200	20.97
24-SDSC-L42-G1/1/2A	42	L	1.1/2"	PN200	38.00
24-SDSC-L42-G1/1/2A	42	L	1.1/2"	PN200	27.23
24-SDSC-S6-G1/4A	6	S	1/4"	PN500	10.93
24-SDSC-S8-G1/4A	8	S	1/4"	PN500	4.17
24-SDSC-S10-G1/4A	10	S	1/4"	PN500	4.98
24-SDSC-S10-G3/8A	10	S	3/8"	PN400	3.72
24-SDSC-S12-G1/4A	12	S	1/4"	PN400	12.69
24-SDSC-S12-G3/8A	12	S	3/8"	PN400	10.93
24-SDSC-S12-G1/2A	12	S	1/2"	PN400	10.81
24-SDSC-S14-G1/2A	14	S	1/2"	PN400	18.98
24-SDSC-S16-G3/8A	16	S	3/8"	PN400	13.34
24-SDSC-S16-G1/2A	16	S	1/2"	PN400	6.40
24-SDSC-S16-G3/4A	16	S	3/4"	PN400	19.40
24-SDSC-S20-G1/2A	20	S	1/2"	PN400	16.25
24-SDSC-S20-G3/4A	20	S	3/4"	PN200	15.41
24-SDSC-S25-G3/4A	25	S	3/4"	PN200	21.93
24-SDSC-S25-G1A	25	S	1"	PN200	17.58
24-SDSC-S30-G1A	30	S	1"	PN200	32.97
24-SDSC-S30-G1/1/4A	30	S	1.1/4"	PN200	23.85
24-SDSC-S38-G1/1/2A	38	S	1.1/2"	PN200	35.19

Male Stud Coupling-Metric Tapered(keg)-LL/L/S Series

FE QC: 4422



▶▶▶ 18 More Variants available online, or Call Us

Part Number	Tube O/D (mm)	Series	Male Metric Taper	Pressure bar	Price
24-SDSC-LL6-M6T	6	LL	M 6 x 1 keg	PN 100	2.94

Male Stud Coupling-BSPT-LL/L/S Series

FE QC: 4423



▶▶▶ 25 More Variants available online, or Call Us

Part Number	Tube O/D (mm)	Series	BSPT Male	Pressure bar	Price
24-SDSC-LL6-R1/8T	6	LL	1/8"	PN 100	1.93
24-SDSC-LL8-R1/8T	8	LL	1/8"	PN 100	2.10
24-SDSC-L6-R1/8T	6	L	1/8"	PN 315	6.33
24-SDSC-L6-R1/4T	6	L	1/4"	PN 315	9.57
24-SDSC-L15-R1/2T	15	L	1/2"	PN 315	8.94
24-SDSC-L22-R3/4T	22	L	3/4"	PB 160	9.07
24-SDSC-S8-R1/4T	8	S	1/4"	PB 630	9.38

Male Stud Coupling-NPT-LL/L/S Series

FE QC: 4424



▶▶▶ 41 More Variants available online, or Call Us

Part Number	Tube O/D (mm)	Series	NPT Male Thread	Pressure bar	Price
24-SDSC-L18-N1/2T	18	L	1/2 NPT	PN 315	5.70
24-SDSC-L42-N1/1/2T	42	L	1 1/2 NPT	PN 160	28.73
24-SDSC-S20-N3/4T	20	S	3/4 NPT	PN 400	9.94
24-SDSC-S38-N1/1/2T	38	S	1 1/2 NPT	PN 315	32.93

Male Stud c/w Seal Edge-Metric Parallel-L Series

FE QC: 4425



▶▶▶ 31 More Variants available online, or Call Us

Part Number	Tube O/D (mm)	Series	Metric Male	Pressure bar	Price
24-SDSC-L10-M16B	10	L	M 16 x 1.5	PN 400	4.52
24-SDSC-L18-M26B	18	L	M 26 x 1.5	PN 200	10.30
24-SDSC-L22-M33B	22	L	M 33 x 2	PN 200	18.53

Male Stud c/w Seal Edge-Metric Parallel-S Series

FE QC: 4426



▶▶▶ 16 More Variants available online, or Call Us

Part Number	Tube O/D (mm)	Series	Metric Male	Pressure bar	Price
24-SDSC-S25-M33B	25	S	M 33 x 2	PN 400	16.23
24-SDSC-S30-M42B	30	S	M 42 x 2	PN 200	22.14

Male Stud c/w Seal Edge-BSPP-L Series

FE QC: 4427



▶▶▶ 26 More Variants available online, or Call Us

Part Number	Tube O/D (mm)	Series	BSPP Male Thread	Pressure bar	Price
24-SDSC-L10-G1/8B	10	L	G 1/8	PN 400	5.23
24-SDSC-L10-G1/4B	10	L	G 1/4	PN 400	2.56
24-SDSC-L10-G3/8B	10	L	G 3/8	PN 400	3.17
24-SDSC-L12-G1/4B	12	L	G 1/4	PN 400	3.39
24-SDSC-L12-G3/8B	12	L	G 3/8	PN 400	3.21
24-SDSC-L12-G1/2B	12	L	G 1/2	PN 400	4.49
24-SDSC-L15-G3/4B	15	L	G 3/4	PN 400	8.36
24-SDSC-L18-G1/2B	18	L	G 1/2	PN 400	5.37
24-SDSC-L28-G11/4B	28	L	G 1 1/4	PN 200	29.56
24-SDSC-L42-G11/4B	42	L	G 1 1/4	PN 200	39.49

Male Stud c/w Seal Edge-BSPP-S Series

FE QC: 4428



▶▶▶ 22 More Variants available online, or Call Us

Part Number	Tube O/D (mm)	Series	BSPP Male Thread	Pressure bar	Price
24-SDSC-S10-G1/4B	10	S	G 1/4	PN 500	4.74
24-SDSC-S20-G1/2B	20	S	G 1/2	PN 200	12.18
24-SDSC-S20-G3/4B	20	S	G 3/4	PN 200	8.67
24-SDSC-S20-G1B	20	S	G 1	PN 200	20.86
24-SDSC-S25-G1B	25	S	G 1	PN 200	14.82
24-SDSC-S25-G11/4B	25	S	G 1 1/4	PN 200	50.27
24-SDSC-S30-G3/4B	30	S	G 3/4	PN 200	34.83
24-SDSC-S38-G1B	38	S	G 1	PN 200	41.38
24-SDSC-S38-G11/2B	38	S	G 1 1/2	PN 200	27.85

Male Stud c/w Peflex Seal Ring-Metric Parallel-L Series

FE QC: 4429



▶▶▶ 15 More Variants available online, or Call Us

Part Number	Tube O/D (mm)	Series	Metric Male	Pressure bar	Price
24-SDSC-L8-M14E	8	L	M 14 x 1.5	PN 500	8.69
24-SDSC-L12-M14E	12	L	M 14 x 1.5	PN 400	8.62
24-SDSC-L12-M16E	12	L	M 16 x 1.5	PN 400	3.72
24-SDSC-L12-M18E	12	L	M 18 x 1.5	PN 400	5.97
24-SDSC-L12-M22E	12	L	M 22 x 1.5	PN 400	6.69
24-SDSC-L15-M16E	15	L	M 16 x 1.5	PN 400	9.20
24-SDSC-L22-M27E	22	L	M 27 x 2	PN 250	39.72
24-SDSC-L35-M42E	35	L	M 42 x 2	PN 250	20.41

Male Stud c/w Peflex Seal Ring-Metric Parallel-S Series

FE QC: 4430



▶▶▶ 10 More Variants available online, or Call Us

Part Number	Tube O/D (mm)	Series	Metric Male	Pressure bar	Price
24-SDSC-S16-M18E	16	S	M 18 x 1.5	PN 630	11.46
24-SDSC-S20-M27E	20	S	M 27 x 2	PN 420	9.37

Male Stud c/w Peflex Seal Ring-BSPP-L Series

FE QC: 4431



▶▶▶ 13 More Variants available online, or Call Us

Part Number	Tube O/D (mm)	Series	BSPP Male Thread	Pressure bar	Price
24-SDSC-L8-G1/4E	8	L	G 1/4	PN 500	2.93
24-SDSC-L8-G3/8E	8	L	G 3/8	PN 400	3.73
24-SDSC-L10-G1/4E	10	L	G 1/4	PN 500	3.08
24-SDSC-L10-G3/8E	10	L	G 3/8	PN 400	3.68
24-SDSC-L12-G1/4E	12	L	G 1/4	PN 400	3.90
24-SDSC-L12-G3/8E	12	L	G 3/8	PN 400	3.72
24-SDSC-L12-G1/2E	12	L	G 1/2	PN 400	5.13
24-SDSC-L15-G1/2E	15	L	G 1/2	PN 400	4.91
24-SDSC-L15-G3/4E	15	L	G 3/4	PN 250	10.28
24-SDSC-L22-G1/2E	22	L	G 1/2	PN 250	13.45
24-SDSC-L22-G3/4E	22	L	G 3/4	PN 250	8.31
24-SDSC-L22-G1E	22	L	G 1	PN 250	18.75
24-SDSC-L28-G3/4E	28	L	G 3/4	PN 250	22.32
24-SDSC-L28-G1E	28	L	G 1	PN 250	14.89
24-SDSC-L28-G11/4E	28	L	G 1 1/4	PN 250	35.83
24-SDSC-L35-G1E	35	L	G 1	PN 250	28.05
24-SDSC-L35-G11/4E	35	L	G 1 1/4	PN 250	20.55
24-SDSC-L35-G11/2E	35	L	G 1 1/2	PN 250	43.03
24-SDSC-L42-G11/2E	42	L	G 1 1/2	PN 250	25.22

Male Stud c/w Peflex Seal Ring-BSPP-S Series

FE QC: 4432



▶▶▶ 13 More Variants available online, or Call Us

Part Number	Tube O/D (mm)	Series	BSPP Male Thread	Pressure bar	Price
24-SDSC-S12-G1/4E	12	S	G 1/4	PN 630	6.54
24-SDSC-S12-G3/8E	12	S	G 3/8	PN 630	4.20
24-SDSC-S16-G3/8E	16	S	G 3/8	PN 630	11.87
24-SDSC-S16-G1/2E	16	S	G 1/2	PN 630	6.43
24-SDSC-S20-G1/2E	20	S	G 1/2	PN 420	14.08
24-SDSC-S20-G3/4E	20	S	G 3/4	PN 420	9.30
24-SDSC-S25-G3/4E	25	S	G 3/4	PN 420	22.59
24-SDSC-S25-G1E	25	S	G 1	PN 420	15.98
24-SDSC-S30-G1E	30	S	G 1	PN 420	28.41
24-SDSC-S38-G11/4E	38	S	G 1 1/4	PN 420	35.11
24-SDSC-S38-G11/2E	38	S	G 1 1/2	PN 420	30.04

Male Stud c/w O-Ring Seal-UNF-L Series

FE QC: 4433



▶▶▶ 17 More Variants available online, or Call Us

Part Number	Tube O/D (mm)	Series	Thread UNF	Pressure bar	Price
24-SDSC-L10-U7/16-20F	10	L	7/16-20 UNF	PN 500	12.38

Male Stud c/w O-Ring Seal-UN-L Series

FE QC: 4434



▶▶▶ 6 More Variants available online, or Call Us

Part Number	Tube O/D (mm)	Series	UN Thread	Pressure bar	Price
24-SDSC-L22-U11/16-12F	22	L	1 1/16-12 UN	PN 250	25.93
24-SDSC-L22-U15/16-12F	22	L	1 5/16-12 UN	PN 250	30.60
24-SDSC-L28-U15/16-12F	28	L	1 5/16-12 UN	PN 250	33.73
24-SDSC-L35-U15/16-12F	35	L	1 5/16-12 UN	PN 250	40.28
24-SDSC-L42-U17/8-12F	42	L	1 7/8-12 UN	PN 250	56.90

Male Stud c/w O-Ring Seal-UNF-S Series

FE QC: 4435



▶▶▶ 14 More Variants available online, or Call Us

Part Number	Tube O/D (mm)	Series	Thread UNF	Pressure bar	Price
24-SDSC-S8-U7/16-20F	8	S	7/16-20 UNF	PN 800	12.64

Male Stud c/w O-Ring Seal-UN-S Series

FE QC: 4436



▶▶▶ 4 More Variants available online, or Call Us

Part Number	Tube O/D (mm)	Series	UN Thread	Pressure bar	Price
24-SDSC-S25-U15/16-12F	25	S	1 5/16-12 UN	PN 420	38.80
24-SDSC-S30-U15/8-12F	30	S	1 5/8-12 UN	PN 420	48.94
24-SDSC-S38-U15/8-12F	38	S	1 5/8-12 UN	PN 315	61.79
24-SDSC-S38-U17/8-12F	38	S	1 7/8-12 UN	PN 315	65.74



We also stock body only without nuts and cutting rings

Product ▶ Female Stud Fittings

Female Stud Coupling - BSPP to Tube - L/S Series



FE QC: 4441



▶▶▶ 12 More Variants available online, or Call Us

Part Number	Tube O/D (mm)	Series	BSPP Female Thread	Pressure bar	Price
24-SC-L6-IG1/8	6	L	G 1/8	PN 315	3.01
24-SC-L6-IG1/4	6	L	G 1/4	PN 315	23.80
24-SC-L8-IG1/4	8	L	G 1/4	PN 315	3.22
24-SC-L10-IG1/4	10	L	G 1/4	PN 315	3.47
24-SC-L10-IG3/8	10	L	G 3/8	PN 315	15.83
24-SC-L10-IG1/2	10	L	G 1/2	PN 315	21.67
24-SC-L12-IG1/4	12	L	G 1/4	PN 315	17.24
24-SC-L12-IG3/8	12	L	G 3/8	PN 315	4.96
24-SC-L12-IG1/2	12	L	G 1/2	PN 315	13.42
24-SC-L15-IG1/2	15	L	G 1/2	PN 315	5.50
24-SC-L18-IG1/2	18	L	G 1/2	PN 315	7.21
24-SC-L22-IG3/4	22	L	G 3/4	PN 160	10.46
24-SC-L35-IG1 1/4	35	L	G 1 1/4	PN 160	40.60
24-SC-S10-IG3/8	10	S	G 3/8	PB 630	7.11
24-SC-S12-IG3/8	12	S	G 3/8	PB 630	7.33
24-SC-S16-IG1/2	16	S	G 1/2	PB 400	9.67
24-SC-S20-IG3/4	20	S	G 3/4	PB 400	15.83
24-SC-S30-IG1 1/4	30	S	G 1 1/4	PB 400	41.23

Product ▶ Stand Pipe Adaptors

Stand Pipe Adaptor - Edge Seal - BSPP Thread - (L) (S) Series



FE QC: 4355



▶▶▶ 23 More Variants available online, or Call Us

Part Number	Tube O/D (mm)	Series	BSPP Male Thread	Pressure bar	Price
24-SWSDS-L12-G1/4B	12	L	G 1/4	PN 315	22.82
24-SWSDS-S12-G1/2B	12	S	G 1/2	PB 400	61.09

Stand Pipe Adaptor - Peflex Seal - Metric Thread - (L) (S) Series



FE QC: 4356



▶▶▶ 20 More Variants available online, or Call Us

Part Number	Tube O/D (mm)	Series	Metric Male	Pressure bar	Price
24-SWSDS-S10-M16E	10	S	M 16 x 1.5	PN 630	5.26

Stand Pipe Adaptor - Peflex Seal - BSPP Thread - (L) (S) Series



FE QC: 4357



▶▶▶ 9 More Variants available online, or Call Us

Part Number	Tube O/D (mm)	Series	BSPP Male Thread	Pressure bar	Price
24-SWSDS-L6-G1/4E	6	L	G 1/4	PN 315	15.91
24-SWSDS-L8-G1/4E	8	L	G 1/4	PN 315	3.81
24-SWSDS-L8-G3/8E	8	L	G 3/8	PN 315	CALL
24-SWSDS-L10-G1/4E	10	L	G 1/4	PN 315	3.90
24-SWSDS-L10-G3/8E	10	L	G 3/8	PN 315	12.47
24-SWSDS-L12-G3/8E	12	L	G 3/8	PN 315	4.29
24-SWSDS-L12-G1/2E	12	L	G 1/2	PN 315	8.71
24-SWSDS-L15-G3/8E	15	L	G 3/8	PN 315	30.08
24-SWSDS-L15-G1/2E	15	L	G 1/2	PN 315	5.83
24-SWSDS-L18-G1/2E	18	L	G 1/2	PN 315	7.58
24-SWSDS-L22-G3/4E	22	L	G 3/4	PN 160	11.18
24-SWSDS-L28-G1E	28	L	G 1	PN 160	17.40
24-SWSDS-L35-G1 1/4E	35	L	G 1 1/4	PN 160	29.10
24-SWSDS-L42-G1 1/2E	42	L	G 1 1/2	PN 160	32.59
24-SWSDS-S12-G3/8E	12	S	G 3/8	PN 630	4.46
24-SWSDS-S12-G1/2E	12	S	G 1/2	PN 630	17.31
24-SWSDS-S14-G1/2E	14	S	G 1/2	PN 630	8.89
24-SWSDS-S16-G1/2E	16	S	G 1/2	PN 400	7.98
24-SWSDS-S20-G3/4E	20	S	G 3/4	PN 400	12.77
24-SWSDS-S25-G1E	25	S	G 1	PN 400	19.23
24-SWSDS-S30-G1 1/4E	30	S	G 1 1/4	PN 400	26.97

Stand Pipe Adaptor - NPT Thread - (L) (S) Series



FE QC: 4358



▶▶▶ 19 More Variants available online, or Call Us

Part Number	Tube O/D (mm)	Series	NPT Male Thread	Pressure bar	Price
24-SWSDS-L28-N1T	28	L	1 NPT	PN 160	29.60

Stand Pipe Adaptor - Soft Seat - BSPP Thread - (L) (S) Series



FE QC: 4374



▶▶▶ 21 More Variants available online, or Call Us

Part Number	Tube O/D (mm)	Series	BSPP Male Thread	Pressure bar	Price
24-SWOSDS-L10-G1/4E	10	L	G 1/4	PN 500	5.21
24-SWOSDS-L12-G3/8E	12	L	G 3/8	PN 400	5.39
24-SWOSDS-L15-G1/2E	15	L	G 1/2	PN 400	7.19
24-SWOSDS-L18-G1/2E	18	L	G 1/2	PN 400	8.12
24-SWOSDS-L22-G3/4E	22	L	G 3/4	PN 250	12.10
24-SWOSDS-L28-G3/4E	28	L	G 3/4	PN 250	42.41
24-SWOSDS-L28-G1E	28	L	G 1	PN 250	17.80
24-SWOSDS-S8-G1/4E	8	S	G 1/4	PN 800	5.47
24-SWOSDS-S12-G3/8E	12	S	G 3/8	PN 630	5.73
24-SWOSDS-S12-G1/2E	12	S	G 1/2	PN 630	7.91
24-SWOSDS-S16-G1/2E	16	S	G 1/2	PN 630	8.92
24-SWOSDS-S20-G1/2E	20	S	G 1/2	PN 420	18.58
24-SWOSDS-S20-G3/4E	20	S	G 3/4	PN 420	12.91
24-SWOSDS-S25-G3/4E	25	S	G 3/4	PN 420	25.79
24-SWOSDS-S25-G1E	25	S	G 1	PN 420	18.67
24-SWOSDS-S30-G1E	30	S	G 1	PN 420	29.20
24-SWOSDS-S38-G1 1/4E	38	S	G 1 1/4	PN 420	60.92

Product ▶ Tube to Tube Couplings

Tube to Tube Coupling - Straight - LL/L/S Series



FE QC: 4442



▶▶▶ 3 More Variants available online, or Call Us

Part Number	Tube O/D (mm)	Series	Pressure bar	Price
24-SC-LL6	6	LL	PN 100	3.48
24-SC-L6	6	L	PN 500	3.22
24-SC-L8	8	L	PN 500	3.46
24-SC-L10	10	L	PN 500	3.93
24-SC-L12	12	L	PN 400	4.47
24-SC-L15	15	L	PN 400	5.80
24-SC-L18	18	L	PN 400	8.55
24-SC-L22	22	L	PN 250	11.34
24-SC-L28	28	L	PN 250	19.71
24-SC-L35	35	L	PN 250	26.58
24-SC-L42	42	L	PN 250	34.60
24-SC-S6	6	S	PN 800	3.72
24-SC-S8	8	S	PN 800	4.07
24-SC-S10	10	S	PN 800	4.80
24-SC-S12	12	S	PN 630	5.24
24-SC-S14	14	S	PN 630	8.92
24-SC-S16	16	S	PN 630	9.02
24-SC-S20	20	S	PN 420	13.13
24-SC-S25	25	S	PN 420	21.59
24-SC-S30	30	S	PN 420	29.50
24-SC-S38	38	S	PN 420	40.49

Tube to Tube Coupling - Reducer - LL/L/S Series



FE QC: 4443

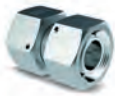


▶▶▶ 40 More Variants available online, or Call Us

Part Number	Tube O/D (mm)	Series	Pressure bar	Price
24-SC-L10-L6	10-6	L	PN 500	6.15
24-SC-L12-L8	12-8	L	PN 400	6.94
24-SC-L15-L6	15-6	L	PN 400	14.47
24-SC-L22-L18	22-18	L	PN 250	16.17
24-SC-L28-L22	28-22	L	PN 250	29.95
24-SC-L35-L22	35-22	L	PN 250	39.05
24-SC-S12-S8	12-8	S	PN 630	9.52
24-SC-S30-S25	30-25	S	PN 420	44.43
24-SC-S38-S25	38-25	S	PN 420	114.72
24-SC-S38-S30	38-30	S	PN 420	62.25

Swivel to Swivel Coupling - Soft Seat - (L) (S) Series

FE QC: 4368



▶▶▶ 42 More Variants available online, or Call Us

Part Number	Tube O/D (mm)	Series	Pressure bar	Price
24-SW20S-L10	10	L	PN 500	11.08
24-SW20S-L12	12	L	PN 400	11.86
24-SW20S-L15	15	L	PN 400	13.25
24-SW20S-L22	22	L	PN 250	16.64
24-SW20S-L28	28	L	PN 250	24.96
24-SW20S-L35	35	L	PN 250	28.97
24-SW20S-L42	42	L	PN 250	35.18
24-SW20S-S12-CP2	12	S	PN 630	14.13
24-SW20S-S16-CP2	16	S	PN 630	16.67
24-SW20S-S25	25	S	PN 420	24.44

Swivel to Swivel Reducing Coupling - Soft Seat - (L)to(L) Series

FE QC: 4372



▶▶▶ 24 More Variants available online, or Call Us

Part Number	Tube O/D (mm)	Description	Pressure bar	Price
24-SW20S-L12-L8-CP1	12-8	(L)to(L)	PN 400	18.23
24-SW20S-L15-L12-CP1	15-12	(L)to(L)	PN 400	19.19
24-SW20S-L28-L22-CP1	28-22	(L)to(L)	PN 250	28.07



See our website for all the sizes we stock

▶ Elbows

Elbow - Tube to Tube - LL/L/S Series



FE QC: 4444



▶▶▶ 7 More Variants available online, or Call Us

Part Number	Tube O/D (mm)	Series	Pressure bar	Price
24-EC-L6-P	6	L	PN 500	6.39
24-EC-L8-P	8	L	PN 500	6.60
24-EC-L10-P	10	L	PN 500	7.03
24-EC-L12-P	12	L	PN 400	8.08
24-EC-L15	15	L	PN 400	10.56
24-EC-L18	18	L	PN 400	14.16
24-EC-L22	22	L	PN 250	19.46
24-EC-L28	28	L	PN 250	30.41
24-EC-L35	35	L	PN 250	43.43
24-EC-L42	42	L	PN 250	57.44
24-EC-S12-P	12	S	PN 630	9.66
24-EC-S16	16	S	PN 630	14.43
24-EC-S20	20	S	PN 420	19.78
24-EC-S25	25	S	PN 420	32.17
24-EC-S30	30	S	PN 420	44.25
24-EC-S38	38	S	PN 420	63.83

Elbow - Tube to Metric Tapered (keg) - LL/L/S Series

FE QC: 4445



▶▶▶ 16 More Variants available online, or Call Us

Part Number	Tube O/D (mm)	Series	Male Metric Taper	Pressure bar	Price
24-SDEC-LL6-M6T-P	6	LL	M 6 x 1 keg	PN 100	12.09
24-SDEC-LL6-M8T-P	6	LL	M 8 x 1 keg	PN 100	10.88
24-SDEC-LL6-M10T-P	6	LL	M 10 x 1 keg	PN 100	5.47

Elbow - Tube to BSPT - LL/L/S Series

FE QC: 4446



▶▶▶ 22 More Variants available online, or Call Us

Part Number	Tube O/D (mm)	Series	BSPT Male	Pressure bar	Price
24-SDEC-LL6-R1/8T-P	6	LL	1/8"	PN 100	5.46
24-SDEC-L6-R1/8T-P	6	L	1/8"	PN 315	5.59
24-SDEC-L6-R1/4T-P	6	L	1/4"	PN 315	17.04
24-SDEC-L8-R1/8T-P	8	L	1/8"	PN 315	20.51
24-SDEC-L10-R1/4T-P	10	L	1/4"	PN 315	6.53
24-SDEC-L10-R3/8T-P	10	L	3/8"	PN 315	13.23
24-SDEC-L12-R3/8T-P	12	L	3/8"	PN 315	7.75
24-SDEC-S12-R1/2T	12	S	1/2"	PB 630	22.22
24-SDEC-S16-R1/2T	16	S	1/2"	PB 400	13.06

Elbow - Tube to NPT - LL/L/S Series

FE QC: 4447



▶▶▶ 23 More Variants available online, or Call Us

Part Number	Tube O/D (mm)	Series	NPT Male Thread	Pressure bar	Price
24-SDEC-L6-N1/8T-P	6	L	1/8 NPT	PN 315	6.19
24-SDEC-L12-N3/8T-P	12	L	3/8 NPT	PN 315	8.81
24-SDEC-L35-N11/4T	35	L	1 1/4 NPT	PN 160	52.69

Swivel Elbow - Tube to Tube - L/S Series

FE QC: 4448



▶▶▶ 1 More Variant available online, or Call Us

Part Number	Tube O/D (mm)	Series	Pressure bar	Price
24-SWEC-L6	6	L	PN 315	6.34
24-SWEC-L8	8	L	PN 315	6.41
24-SWEC-L10	10	L	PN 315	7.05
24-SWEC-L12	12	L	PN 315	8.66
24-SWEC-L15	15	L	PN 315	10.00
24-SWEC-L18	18	L	PN 315	14.25
24-SWEC-L22	22	L	PN 160	19.63
24-SWEC-L28	28	L	PN 160	30.58
24-SWEC-L42	42	L	PN 160	61.44
24-SWEC-S6	6	S	PN 630	7.04
24-SWEC-S8	8	S	PN 630	7.79
24-SWEC-S10	10	S	PN 630	8.96
24-SWEC-S12	12	S	PN 630	9.51
24-SWEC-S14	14	S	PN 630	14.18
24-SWEC-S16	16	S	PN 400	14.31
24-SWEC-S20	20	S	PN 400	21.13
24-SWEC-S25	25	S	PN 400	32.58
24-SWEC-S30	30	S	PN 400	46.55
24-SWEC-S38	38	S	PN 315	67.38

Swivel Elbow-Soft Seat-90 Degree-L/S Series

FE QC: 4449



▶▶▶ 3 More Variants available online, or Call Us

Part Number	Tube O/D (mm)	Series	Pressure bar	Price
24-SWOEC-L6-P	6	L	PN 500	7.23
24-SWOEC-L8-P	8	L	PN 500	7.25
24-SWOEC-L10	10	L	PN 500	7.92
24-SWOEC-L12	12	L	PN 400	10.62
24-SWOEC-L15	15	L	PN 400	10.94
24-SWOEC-L18	18	L	PN 400	15.54
24-SWOEC-L22	22	L	PN 250	21.06
24-SWOEC-L28	28	L	PN 250	32.19
24-SWOEC-L35	35	L	PN 250	47.03
24-SWOEC-L42	42	L	PN 250	67.67
24-SWOEC-S6-P	6	S	PN 800	8.05
24-SWOEC-S8-P	8	S	PN 800	8.97
24-SWOEC-S10-P	10	S	PN 800	10.07
24-SWOEC-S12	12	S	PN 630	10.56
24-SWOEC-S16	16	S	PN 630	15.92
24-SWOEC-S20	20	S	PN 420	22.64
24-SWOEC-S25	25	S	PN 420	34.27

Swivel Elbow-Soft Seat-45 Degree-L/S Series

FE QC: 4450



▶▶▶ 16 More Variants available online, or Call Us

Part Number	Tube O/D (mm)	Series	Pressure bar	Price
24-SW0E45C-L15	15	L	PN 400	28.60
24-SW0E45C-L18	18	L	PN 400	32.54
24-SW0E45C-S16	16	S	PN 630	33.11
24-SW0E45C-S25	25	S	PN 420	53.30

Adjustable Elbow-90 Degree-BSPP-c/w Peflex Seal-L/S Series

FE QC: 4452



▶▶▶ 18 More Variants available online, or Call Us

Part Number	Tube O/D (mm)	Series	BSPP Male Thread	Pressure bar	Price
24-SDAEC-L6-G1/8E	6	L	G 1/8	PN 315	14.73
24-SDAEC-L22-G1/2E	22	L	G 1/2	PN 160	34.12
24-SDAEC-S16-G1/2E	16	S	G 1/2	PN 315	22.25
24-SDAEC-S38-G11/2E	38	S	G 1 1/2	PN 160	92.86

Product ▶ Tees

Tee - c/w Metric Taper (keg) Thread on the Branch-LL/L/S Series

FE QC: 4457



▶▶▶ 14 More Variants available online, or Call Us

Part Number	Tube O/D (mm)	Series	Male Metric Taper	Pressure bar	Price
24-SDTC-L12-M16T-P	12	L	M 16 x 1.5 keg	PN 315	19.92

Tee - c/w BSPT Thread on The Branch-LL/L/S Series

FE QC: 4458



▶▶▶ 14 More Variants available online, or Call Us

Part Number	Tube O/D (mm)	Series	BSPT Male	Pressure bar	Price
24-SDTC-L8-R1/4T-P	8	L	1/4"	PN 315	14.28

Equal Tee-LL/L/S Series

FE QC: 4459



▶▶▶ 7 More Variants available online, or Call Us

Part Number	Tube O/D (mm)	Series	Pressure bar	Price
24-TC-L6-P	6	L	PN 500	8.32
24-TC-L8-P	8	L	PN 500	8.88
24-TC-L10-P	10	L	PN 500	9.71
24-TC-L12-P	12	L	PN 400	11.35
24-TC-L15	15	L	PN 400	14.40
24-TC-L18	18	L	PN 400	19.57
24-TC-L22	22	L	PN 250	27.06
24-TC-L28	28	L	PN 250	43.09
24-TC-L35	35	L	PN 250	57.48
24-TC-L42	42	L	PN 250	81.64
24-TC-S6-P	6	S	PN 800	9.33
24-TC-S12-P	12	S	PN 630	12.43
24-TC-S16	16	S	PN 630	19.84
24-TC-S20	20	S	PN 420	30.81
24-TC-S25	25	S	PN 420	45.87
24-TC-S30	30	S	PN 420	58.79
24-TC-S38	38	S	PN 420	88.30

Unequal Tee-(L) Series

FE QC: 4460



▶▶▶ 45 More Variants available online, or Call Us

Part Number	Tube O/D (mm)	Series	Pressure bar	Price
24-TC-L12-L8-L12-P	12-8-12	L	PN 400	21.27
24-TC-L15-L8-L15	15-8-15	L	PN 400	73.96
24-TC-L22-L18-L22	22-18-22	L	PN 250	56.37

Unequal Tee-(S) Series

FE QC: 4461



▶▶▶ 15 More Variants available online, or Call Us

Part Number	Tube O/D (mm)	Series	Pressure bar	Price
24-TC-S16-S12-S16	16-12-16	S	PN 630	39.02
24-TC-S20-S16-S20	20-16-20	S	PN 420	66.41
24-TC-S25-S16-S25	25-16-25	S	PN 420	76.99
24-TC-S30-S20-S30	30-20-30	S	PN 420	101.31

Tee c/w Swivel on the Branch-L/S Series

FE QC: 4462



▶▶▶ 13 More Variants available online, or Call Us

Part Number	Tube O/D (mm)	Series	Pressure bar	Price
24-SWTC-L8	8	L	PN 315	10.19
24-SWTC-L10	10	L	PN 315	11.56
24-SWTC-L12	12	L	PN 315	12.06
24-SWTC-L15	15	L	PN 315	15.67
24-SWTC-L18	18	L	PN 315	21.08
24-SWTC-L42	42	L	PN 160	89.63
24-SWTC-S25	25	S	PN 400	52.07



Tee c/w Swivel on the Run-L/S Series

FE QC: 4463



▶▶▶ 6 More Variants available online, or Call Us

Part Number	Tube O/D (mm)	Series	Pressure bar	Price
24-SWLC-L8	8	L	PN 315	10.30
24-SWLC-L10	10	L	PN 315	11.29
24-SWLC-L12	12	L	PN 315	12.73
24-SWLC-L15	15	L	PN 315	16.31
24-SWLC-L18	18	L	PN 315	22.09
24-SWLC-L22	22	L	PN 160	32.53
24-SWLC-L28	28	L	PN 160	49.42
24-SWLC-S6	6	S	PN 630	11.17
24-SWLC-S12	12	S	PN 630	15.30
24-SWLC-S16	16	S	PN 400	23.44
24-SWLC-S20	20	S	PN 400	34.47
24-SWLC-S25	25	S	PN 400	52.48
24-SWLC-S30	30	S	PN 400	68.80
24-SWLC-S38	38	S	PN 315	101.11

Tee-Swivel on the Branch-Soft Seat-L/S Ser



FE QC: 4464



▶▶▶ 15 More Variants available online, or Call Us

Part Number	Tube O/D (mm)	Series	Pressure bar	Price
24-SWOTC-L10-P	10	L	PN 500	13.48
24-SWOTC-L12-P	12	L	PN 400	13.97
24-SWOTC-L15	15	L	PN 400	17.98
24-SWOTC-L42	42	L	PN 250	108.04
24-SWOTC-S38	38	S	PN 420	116.35

Adjustable Tee-Metric Parallel on the Branch-L/S Series



FE QC: 4466



▶▶▶ 10 More Variants available online, or Call Us

Part Number	Tube O/D (mm)	Series	Metric Male	Pressure bar	Price
24-SDATC-L6-M10F	6	L	M 10 x 1	PN 315	11.79

Swivel Tee-On The Run-Soft Seat-L/S Ser



FE QC: 4467



▶▶▶ 10 More Variants available online, or Call Us

Part Number	Tube O/D (mm)	Series	Pressure bar	Price
24-SWOLC-L10-P	10	L	PN 500	13.22
24-SWOLC-L12-P	12	L	PN 400	14.65
24-SWOLC-L15	15	L	PN 400	18.71
24-SWOLC-L18	18	L	PN 400	25.25
24-SWOLC-L22	22	L	PN 250	36.44
24-SWOLC-L28	28	L	PN 250	54.54
24-SWOLC-S10-P	10	S	PN 800	16.25
24-SWOLC-S12	12	S	PN 630	17.76
24-SWOLC-S25	25	S	PN 420	58.24
24-SWOLC-S38	38	S	PN 420	119.13

Equal Cross-LL/L/S Series



FE QC: 4468



▶▶▶ 20 More Variants available online, or Call Us

Part Number	Tube O/D (mm)	Series	Pressure bar	Price
24-KC-L6	6	L	PN 315	22.89
24-KC-L28	28	L	PN 160	83.41
24-KC-S38	38	S	PN 315	160.85

Bulkhead Coupling-Straight-L/S Series



FE QC: 4469



▶▶▶ 6 More Variants available online, or Call Us

Part Number	Tube O/D (mm)	Series	Pressure bar	Price
24-BHSLNC-L10	10	L	PN 500	6.52
24-BHSLNC-L12	12	L	PN 400	7.31
24-BHSLNC-L15	15	L	PN 400	10.55
24-BHSLNC-L18	18	L	PN 400	16.55
24-BHSLNC-L22	22	L	PN 250	20.88
24-BHSLNC-L28	28	L	PN 250	31.47
24-BHSLNC-L42	42	L	PN 250	64.06
24-BHSLNC-S8	8	S	PN 800	8.73
24-BHSLNC-S12	12	S	PN 630	10.52
24-BHSLNC-S16	16	S	PN 630	16.50
24-BHSLNC-S20	20	S	PN 420	25.19
24-BHSLNC-S25	25	S	PN 420	39.93
24-BHSLNC-S30	30	S	PN 420	48.53
24-BHSLNC-S38	38	S	PN 420	78.60

Bulkhead Coupling-Elbow-L/S Series

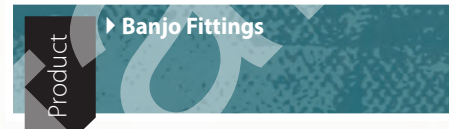


FE QC: 4470



▶▶▶ 16 More Variants available online, or Call Us

Part Number	Tube O/D (mm)	Series	Pressure bar	Price
24-BHELNC-L12	12	L	PN 315	13.22
24-BHELNC-L15	15	L	PN 315	15.45
24-BHELNC-S16	16	S	PN 400	21.45
24-BHELNC-S20	20	S	PN 400	33.47



Banjo-Metric Parallel-c/w Metal Sealing-Edge Ring-LL/L/S Series



FE QC: 4471



▶▶▶ 16 More Variants available online, or Call Us

Part Number	Tube O/D (mm)	Series	Metric Male	Pressure bar	Price
24-BSEC-LL4-M8B	4	LL	M 8 x 1	PB 100	12.27
24-BSEC-S10-M16B	10	S	M 16 x 1.5	PB 250	15.09

Banjo-BSPP-c/w Metal Sealing-Edge Ring-LL/L/S Series



FE QC: 4473



▶▶▶ 12 More Variants available online, or Call Us

Part Number	Tube O/D (mm)	Series	BSPP Male Thread	Pressure bar	Price
24-BSEC-LL6-G1/8B	6	LL	G 1/8	PB 100	11.97
24-BSEC-L10-G1/4B	10	L	G 1/4	PB 250	12.83
24-BSEC-L12-G3/8B	12	L	G 3/8	PB 250	14.91
24-BSEC-L12-G1/2B	12	L	G 1/2	PB 250	22.24
24-BSEC-L15-G3/8B	15	L	G 3/8	PB 250	34.23
24-BSEC-L15-G1/2B	15	L	G 1/2	PB 250	18.65
24-BSEC-S16-G1/2B	16	S	G 1/2	PB 160	22.35

Banjo-BSPP-c/w Soft Seal-LL/L/S Series



FE QC: 4474



▶▶▶ 17 More Variants available online, or Call Us

Part Number	Tube O/D (mm)	Series	BSPP Male Thread	Pressure bar	Price
24-BSEC-S10-G3/8E	10	S	G 3/8	PB 250	18.05
24-BSEC-S14-G1/2E	14	S	G 1/2	PB 250	28.13

Banjo-Metric Parallel-Eccentric Flow-c/w Metal Sealing-Edge Ring-L/S Series



FE QC: 4475



▶▶▶ 21 More Variants available online, or Call Us

Part Number	Tube O/D (mm)	Series	Metric Male	Pressure bar	Price
24-BEEC-S25-M33B	25	S	M 33 x 2	PB 250	64.70

Unrestricted Eccentric Flow-Metric Parallel c/w Soft Seal-L/S Series



FE QC: 4476



▶▶▶ 18 More Variants available online, or Call Us

Part Number	Tube O/D (mm)	Series	Metric Male	Pressure bar	Price
24-BEEC-S12-M18E	12	S	M 18 x 1.5	PB 400	20.36

Banjo-Unrestricted Eccentric Flow-BSPP-c/w Metal Sealing-Edge Ring-L/S Series

FE QC: 4477



▶▶▶ 17 More Variants available online, or Call Us

Part Number	Tube O/D (mm)	Series	BSPP Male Thread	Pressure bar	Price
24-BEEC-L10-G1/4B	10	L	G 1/4	PB 350	12.11
24-BEEC-L12-G3/8B	12	L	G 3/8	PB 350	15.30
24-BEEC-S16-G1/2B	16	S	G 1/2	PB 400	25.36
24-BEEC-S30-G11/4B	30	S	G 1 1/4	PB 250	98.48

High Pressure-BSPP-c/w Metal Sealing-Edge Ring-L/S Series

FE QC: 4481



▶▶▶ 19 More Variants available online, or Call Us

Part Number	Tube O/D (mm)	Series	BSPP Male Thread	Pressure bar	Price
24-BCEC-L15-G1/2B	15	L	G 1/2	PB 400	19.11
24-BCEC-L42-G11/2B	42	L	G 1 1/2	PB 250	133.33
24-BCEC-S38-G11/2B	38	S	G 1 1/2	PB 250	141.33

Reducing Straight Coupling-Soft Seat-Swivel-S to S Series

FE QC: 4493



▶▶▶ 39 More Variants available online, or Call Us

Part Number	Tube O/D (mm)	Description	Pressure bar	Price
24-SW0SC-S25-S20	25-20	(S)to(S)	PN 420	19.76

Reducing Straight Coupling-Soft Seat-Swivel Ends-L to L Series

FE QC: 4495



▶▶▶ 40 More Variants available online, or Call Us

Part Number	Tube O/D (mm)	Description	Pressure bar	Price
24-SW0SC-L42-L35	42-35	(L)to(L)	PN 250	37.14



We also stock body only, nuts and cutting rings

Unrestricted Eccentric Flow-BSPP-c/w Soft Seal-L/S Series

FE QC: 4478



▶▶▶ 20 More Variants available online, or Call Us

Part Number	Tube O/D (mm)	Series	BSPP Male Thread	Pressure bar	Price
24-BEEC-S16-G1/2E	16	S	G 1/2	PB 400	28.48

Product ▶ Swivel Couplings

Rotary Coupling-BSPP-L/S Series

FE QC: 4486



▶▶▶ 15 More Variants available online, or Call Us

Part Number	Tube O/D (mm)	Series	BSPP Male Thread	Pressure bar	Price
24-RCEC-L8-G1/4E	8	L	G 1/4	PB 100	99.17

Product ▶ Welding Couplings

Welding Couplings - Straight - L/S Series

FE QC: 4496



▶▶▶ 19 More Variants available online, or Call Us

Part Number	Stub O/D (mm)	Series	Pressure bar	Price
24-WDSC-L8	12	8L	PN 315	2.95

Welding Couplings - Soft Seat - (S) Series

FE QC: 4380



▶▶▶ 24 More Variants available online, or Call Us

Part Number	Tube O/D (mm)	Series	Pressure bar	Price
24-WDNPSO-20X4-C10	20 x 4	S	PN 400	5.47

High Pressure-Metric Parallel-c/w Soft Seal-L/S Series

FE QC: 4480



▶▶▶ 19 More Variants available online, or Call Us

Part Number	Tube O/D (mm)	Series	Metric Male	Pressure bar	Price
24-BCEC-S25-M33E	25	S	M 33 x 2	PB 250	73.41

Reducing Coupling-Swivel on one side-S to S Series

FE QC: 4488



▶▶▶ 37 More Variants available online, or Call Us

Part Number	Tube O/D (mm)	Description	Pressure bar	Price
24-SWSC-S38-S25	38 to 25	(S)to(S)	PN 315	35.99

Reducing Coupling-Swivel on One Side-L to L Series

FE QC: 4491



▶▶▶ 37 More Variants available online, or Call Us

Part Number	Tube O/D (mm)	Description	Pressure bar	Price
24-SWSC-L28-L22	28 to 22	(L)to(L)	PN 160	17.80

Product ▶ Gauge Adaptors

Gauge Adaptors - BSPP to Tube - L/S Series



FE QC: 4498



▶▶▶ 7 More Variants available online, or Call Us

Part Number	Tube O/D (mm)	Series	BSPP Female Thread	Pressure bar	Price
24-PGSC-L6-IG1/4B	6	L	G 1/4	PN 315	4.06
24-PGSC-S8-IG1/4B	8	S	G 1/4	PN 630	10.01
24-PGSC-S12-IG1/4B	12	S	G 1/4	PN 630	48.41

Gauge Adaptors - BSPP to Soft Seat Swivel - (L) (S) Series



FE QC: 4383



▶▶▶ 10 More Variants available online, or Call Us

Part Number	Tube O/D (mm)	Series	Female BSPP	Pressure bar	Price
24-SWOPGS-L10-IG1/4B	10	L	G 1/4	PN 315	6.04
24-SWOPGS-L12-IG1/4B	12	L	G 1/4	PN 315	6.20
24-SWOPGS-S6-IG1/4B	6	S	G 1/4	PN 630	CALL
24-SWOPGS-S12-IG1/4B	12	S	G 1/4	PN 630	33.88

Product ▶ Thread Adaptors

Reducing Bush - BSPP - Male to Female - Seal Edge - Form E



FE QC: 4385



▶▶▶ 11 More Variants available online, or Call Us

Part Number	BSPP Male Thread	BSPP Female Thread	Form	Pressure bar	Price
GP-SDS-G3/4B-IG3/8	G 3/4 A	G 3/8	E	PB 400	3.25
GP-SDS-G1B-IG3/8	G 1 A	G 3/8	E	PB 400	7.36

Reducing Bush - BSPP - Male to Female - Peflex Seal - Form F



FE QC: 4386



▶▶▶ 15 More Variants available online, or Call Us

Part Number	BSPP Male Thread	BSPP Female Thread	Form	Pressure bar	Price
GP-SDS-G1/4E-IG1/2	G 1/4 A	G 1/2	F	PN 630	4.26
GP-SDS-G3/8E-IG1/2	G 3/8 A	G 1/2	F	PN 630	3.87
GP-SDS-G1/2E-IG1	G 1/2 A	G 1	F	PN 400	10.82
GP-SDS-G3/4E-IG1/2	G 3/4 A	G 1/2	F	PN 400	4.72
GP-SDS-G3/4E-IG1	G 3/4 A	G 1	F	PN 400	11.33
GP-SDS-G1E-IG3/4	G 1 A	G 3/4	F	PN 400	8.47
GP-SDS-G1E-IG11/4	G 1 A	G 1 1/4	F	PN 400	35.88
GP-SDS-G11/4E-IG1	G 1 1/4 A	G 1	F	PN 400	15.12
GP-SDS-G11/4E-IG11/2	G 1 1/4 A	G 1 1/2	F	PN 315	47.40
GP-SDS-G11/2E-IG11/4	G 1 1/2 A	G 1 1/4	F	PN 315	25.19

Reducing Bush - BSPP - Male to Female - Peflex Seal - Form E



FE QC: 4387



▶▶▶ 12 More Variants available online, or Call Us

Part Number	BSPP Male Thread	BSPP Female Thread	Form	Pressure bar	Price
GP-SDS-G11/4E-IG1/2	G 1 1/4 A	G 1/2	E	PN 400	16.90
GP-SDS-G11/4E-IG3/4	G 1 1/4 A	G 3/4	E	PN 400	11.95
GP-SDS-G11/2E-IG3/4	G 1 1/2 A	G 3/4	E	PN 315	17.50
GP-SDS-G11/2E-IG1	G 1 1/2 A	G 1	E	PN 315	17.62

Blanking Plug - Metric - Peflex Seal



FE QC: 4389



▶▶▶ 18 More Variants available online, or Call Us

Part Number	Metric Male	Form	Pressure bar	Price
GP-PLIH-M8E-C21	M 8 x 1	N	PN 400	2.06
GP-PLIH-M24E-C21	M 24 x 1.5	N	PN 400	6.52

Blanking Plug - BSPP - Peflex Seal



FE QC: 4390



▶▶▶ 10 More Variants available online, or Call Us

Part Number	BSPP Male Thread	Form	Pressure bar	Price
GP-PLIH-G3/8E-C21	G 3/8	N	PN 400	2.02
GP-PLIH-G1E-C21	G 1	N	PN 400	7.20
GP-PLIH-G11/2E-C21	G 1 1/2	N	PN 315	13.97

Blanking Plug - Metric - O-Ring Seal



FE QC: 4391



▶▶▶ 10 More Variants available online, or Call Us

Part Number	Metric Male	Pressure bar	Price
GP-PLIH-M10F-C21	M 10 x 1	PN 630	1.95

Blanking Plug - (L) (S) Series



FE QC: 4395



▶▶▶ 3 More Variants available online, or Call Us

Part Number	Tube O/D (mm)	Series	Pressure bar	Price
24-TBS-L6	6	L	PN 315	2.30
24-TBS-L8	8	L	PN 315	2.67
24-TBS-L10	10	L	PN 315	3.11
24-TBS-L12	12	L	PN 315	3.68
24-TBS-L15	15	L	PN 315	5.19
24-TBS-L18	18	L	PN 315	7.63
24-TBS-L22	22	L	PN 160	10.80
24-TBS-L28	28	L	PN 160	20.13
24-TBS-S8	8	S	PN 630	3.27
24-TBS-S10	10	S	PN 630	3.78
24-TBS-S12	12	S	PN 630	4.44
24-TBS-S14	14	S	PN 630	8.06
24-TBS-S16	16	S	PN 400	8.09
24-TBS-S20	20	S	PN 400	12.19
24-TBS-S25	25	S	PN 400	20.37
24-TBS-S30	30	S	PN 400	31.08
24-TBS-S38	38	S	PN 315	45.31

2S Cutting Ring - (L) (S) Series - Steel



FE QC: 4268



▶▶▶ 2 More Variants available online, or Call Us

Part Number	Tube O/D (mm)	Series	Pressure bar	Price
24-2S-L/56	6	L - S	PN 315/630	0.32
24-2S-L/510	10	L - S	PN 315/630	0.40
24-2S-L22	22	L	PN 160	0.86
24-2S-L28	28	L	PN 160	1.01
24-2S-L42	42	L	PN 160	2.32
24-2S-S14	14	S	PN 630	0.79
24-2S-S16	16	S	PN 400	0.78
24-2S-S20	20	S	PN 400	0.99
24-2S-S25	25	S	PN 400	1.26
24-2S-S30	30	S	PN 400	1.59
24-2S-S38	38	S	PN 315	2.16

Male Stud Coupling - BSPT - (LL) (L) (S) Series



FE QC: 4288



▶▶▶ 34 More Variants available online, or Call Us

Part Number	Tube O/D (mm)	Series	BSPT Male	Pressure bar	Price
24-SDS-LL6-R1/8T	6	LL	1/8"	PN 100	0.78
24-SDS-LL8-R1/8T	8	LL	1/8"	PN 100	0.92
24-SDS-L8-R1/2T	8	L	1/2"	PN 315	19.87
24-SDS-L10-R1/2T	10	L	1/2"	PN 315	19.06
24-SDS-L12-R1/4T	12	L	1/4"	PN 315	3.79
24-SDS-L22-R1/2T	22	L	1/2"	PB 160	22.42

Male Stud Coupling - NPT - (LL) (L) (S) Series



FE QC: 4289



VOSS

▶▶▶ 36 More Variants available online, or Call Us

Part Number	Tube O/D (mm)	Series	NPT Male Thread	Pressure bar	Price
24-SDS-L12-N1/4T	12	L	1/4 NPT	PN 315	1.90
24-SDS-L15-N1/2T	15	L	1/2 NPT	PN 315	2.77
24-SDS-L22-N1/2T	22	L	1/2 NPT	PN 160	15.18
24-SDS-L22-N3/4T	22	L	3/4 NPT	PN 160	4.31
24-SDS-L28-N1T	28	L	1 NPT	PN 160	8.63
24-SDS-L42-N11/2T	42	L	1 1/2 NPT	PN 160	19.90
24-SDS-S12-N1/2T	12	S	1/2 NPT	PN 630	3.02
24-SDS-S16-N1/2T	16	S	1/2 NPT	PN 400	3.79
24-SDS-S20-N1/2T	20	S	1/2 NPT	PN 400	37.49
24-SDS-S20-N3/4T	20	S	3/4 NPT	PN 400	5.93
24-SDS-S25-N1T	25	S	1 NPT	PN 400	10.04
24-SDS-S30-N1T	30	S	1 NPT	PN 400	90.80
24-SDS-S30-N11/4T	30	S	1 1/4 NPT	PN 400	16.75

Male Stud c/w Seal Edge-Metric Parallel - (L) Series



FE QC: 4290



VOSS

▶▶▶ 35 More Variants available online, or Call Us

Part Number	Tube O/D (mm)	Series	Metric Male	Pressure bar	Price
24-SDS-L10-M18B	10	L	M 18 x 1.5	PN 400	4.58
24-SDS-L12-M16B	12	L	M 16 x 1.5	PN 400	1.70
24-SDS-L15-M18B	15	L	M 18 x 1.5	PN 400	1.91
24-SDS-L18-M26B	18	L	M 26 x 1.5	PN 200	7.47
24-SDS-L22-M26B	22	L	M 26 x 1.5	PN 200	4.13
24-SDS-L28-M33B	28	L	M 33 x 2	PN 200	7.41
24-SDS-L35-M42B	35	L	M 42 x 2	PN 200	11.42
24-SDS-L42-M48B	42	L	M 48 x 2	PN 200	14.64

Male Stud c/w Seal Edge - Metric Parallel - (S) Series



FE QC: 4291



VOSS

▶▶▶ 23 More Variants available online, or Call Us

Part Number	Tube O/D (mm)	Series	Metric Male	Pressure bar	Price
24-SDS-S16-M22B	16	S	M 22 x 1.5	PN 630	2.95
24-SDS-S20-M27B	20	S	M 27 x 2	PN 400	4.72
24-SDS-S25-M27B	25	S	M 27 x 2	PN 400	10.46
24-SDS-S30-M33B	30	S	M 33 x 2	PN 200	31.94

Male Stud c/w Seal Edge - BSPP - (L) Series



FE QC: 4292



VOSS

▶▶▶ 31 More Variants available online, or Call Us

Part Number	Tube O/D (mm)	Series	BSPP Male Thread	Pressure bar	Price
24-SDS-L8-G1/4B	8	L	G 1/4	PN 400	1.16
24-SDS-L10-G1/4B	10	L	G 1/4	PN 400	1.21
24-SDS-L10-G1/2B	10	L	G 1/2	PN 400	3.46
24-SDS-L12-G1/2B	12	L	G 1/2	PN 400	3.00
24-SDS-L15-G1/2B	15	L	G 1/2	PN 400	2.44
24-SDS-L22-G3/4B	22	L	G 3/4	PN 200	4.05
24-SDS-L28-G1B	28	L	G 1	PN 200	7.90
24-SDS-L28-G11/4B	28	L	G 1 1/4	PN 200	23.73
24-SDS-L42-G1B	42	L	G 1	PN 200	53.23

Male Stud c/w Seal Edge- BSPP - (S) Series



FE QC: 4293



VOSS

▶▶▶ 27 More Variants available online, or Call Us

Part Number	Tube O/D (mm)	Series	BSPP Male Thread	Pressure bar	Price
24-SDS-S14-G3/4B	14	S	G 3/4	PN 400	30.27
24-SDS-S16-G1/2B	16	S	G 1/2	PN 400	2.95
24-SDS-S20-G1/2B	20	S	G 1/2	PN 200	8.18
24-SDS-S25-G11/4B	25	S	G 1 1/4	PN 200	43.68
24-SDS-S30-G3/4B	30	S	G 3/4	PN 200	26.76
24-SDS-S30-G1B	30	S	G 1	PN 200	19.41
24-SDS-S38-G1B	38	S	G 1	PN 200	29.84

Male Stud c/w Peflex Seal Ring - Metric Parallel - (S) Series



FE QC: 4294



VOSS

▶▶▶ 27 More Variants available online, or Call Us

Part Number	Tube O/D (mm)	Series	Metric Male	Pressure bar	Price
24-SDS-S12-M18E	12	S	M 18 x 1.5	PN 630	2.59
24-SDS-S25-M33E	25	S	M 33 x 2	PN 420	9.27

Male Stud c/w Peflex Seal Ring - Metric Parallel - (L) Series



FE QC: 4295



VOSS

▶▶▶ 39 More Variants available online, or Call Us

Part Number	Tube O/D (mm)	Series	Metric Male	Pressure bar	Price
24-SDS-L8-M14E	8	L	M 14 x 1.5	PN 500	7.46
24-SDS-L10-M18E	10	L	M 18 x 1.5	PN 400	5.11
24-SDS-L12-M14E	12	L	M 14 x 1.5	PN 400	7.11
24-SDS-L12-M16E	12	L	M 16 x 1.5	PN 400	2.22
24-SDS-L12-M18E	12	L	M 18 x 1.5	PN 400	4.47
24-SDS-L12-M22E	12	L	M 22 x 1.5	PN 400	5.19
24-SDS-L15-M16E	15	L	M 16 x 1.5	PN 400	7.38
24-SDS-L15-M18E	15	L	M 18 x 1.5	PN 400	2.48
24-SDS-L15-M22E	15	L	M 22 x 1.5	PN 400	5.27
24-SDS-L28-M33E	28	L	M 33 x 2	PN 250	8.57
24-SDS-L42-M48E	42	L	M 48 x 2	PN 250	16.87

Male Stud c/w O-Ring Seal - UNF - (L) Series



FE QC: 4296



VOSS

▶▶▶ 15 More Variants available online, or Call Us

Part Number	Tube O/D (mm)	Series	Thread UNF	Pressure bar	Price
24-SDS-L6-U7/16-20F	6	L	7/16-20 UNF	PN 500	11.47
24-SDS-L8-U9/16-18F	8	L	9/16-18 UNF	PN 500	12.02
24-SDS-L12-U7/16-20F	12	L	7/16-20 UNF	PN 400	19.44
24-SDS-L12-U7/8-14F	12	L	7/8-14 UNF	PN 400	16.55
24-SDS-L15-U7/8-14F	15	L	7/8-14 UNF	PN 400	17.30
24-SDS-L22-U7/8-14F	22	L	7/8-14 UNF	PN 250	22.79
24-SDS-L28-U7/8-14F	28	L	7/8-14 UNF	PN 250	23.79

Male Stud c/w O-Ring Seal - UN - (L) Series



FE QC: 4297



VOSS

▶▶▶ 12 More Variants available online, or Call Us

Part Number	Tube O/D (mm)	Series	UN Thread	Pressure bar	Price
24-SDS-L28-U15/8-12F	28	L	1 5/8-12 UN	PN 250	38.39
24-SDS-L35-U13/16-12F	35	L	1 3/16-12 UN	PN 250	46.16
24-SDS-L35-U15/8-12F	35	L	1 5/8-12 UN	PN 250	36.36
24-SDS-L42-U15/8-12F	42	L	1 5/8-12 UN	PN 250	44.85

Male Stud c/w O-Ring Seal - UNF - (S) Series

FE QC: 4298



New

▶▶▶ 12 More Variants available online, or Call Us

Part Number	Tube O/D (mm)	Series	Thread UNF	Pressure bar	Price
24-SDS-S8-U7/16-20F	8	S	7/16-20 UNF	PN 800	11.34
24-SDS-S10-U3/4-16F	10	S	3/4-16 UNF	PN 800	16.36
24-SDS-S12-U3/4-16F	12	S	3/4-16 UNF	PN 630	15.99
24-SDS-S16-U11/16-12F	16	S	1 1/16-12 UN	PN 630	25.12

Male Stud c/w O-Ring Seal - UN - (S) Series

FE QC: 4299



New

▶▶▶ 6 More Variants available online, or Call Us

Part Number	Tube O/D (mm)	Series	UN Thread	Pressure bar	Price
24-SDS-S25-U15/16-12F	25	S	1 5/16-12 UN	PN 420	32.22
24-SDS-S30-U11/16-12F	30	S	1 1/16-12 UN	PN 420	41.49
24-SDS-S30-U15/16-12F	30	S	1 5/16-12 UN	PN 420	36.12
24-SDS-S38-U17/8-12F	38	S	1 7/8-12 UN	PN 315	54.20

Male Stud c/w O-Ring Seal - Metric Parallel - (L) Series

FE QC: 4300



New

▶▶▶ 26 More Variants available online, or Call Us

Part Number	Tube O/D (mm)	Series	Metric Male	Pressure bar	Price
24-SDS-L6-M10F	6	L	M 10 x 1	PN 500	1.46
24-SDS-L8-M12F	8	L	M 12 x 1.5	PN 500	1.53
24-SDS-L10-M14F	10	L	M 14 x 1.5	PN 500	1.73
24-SDS-L12-M16F	12	L	M 16 x 1.5	PN 400	2.20
24-SDS-L15-M18F	15	L	M 18 x 1.5	PN 400	2.90
24-SDS-L22-M27F	22	L	M 27 x 2	PN 250	4.75
24-SDS-L35-M42F	35	L	M 42 x 2	PN 250	12.78
24-SDS-L42-M48F	42	L	M 48 x 2	PN 250	16.74

Male Stud c/w O-Ring Seal - Metric Parallel - (S) Series

FE QC: 4301



New

▶▶▶ 17 More Variants available online, or Call Us

Part Number	Tube O/D (mm)	Series	Metric Male	Pressure bar	Price
24-SDS-S25-M33F	25	S	M 33 x 2	PN 420	9.03
24-SDS-S30-M42F	30	S	M 42 x 2	PN 420	15.12

Male Stud c/w Peflex Seal Ring - BSPP - (L) Series

FE QC: 4302



New

▶▶▶ 13 More Variants available online, or Call Us

Part Number	Tube O/D (mm)	Series	BSPP Male Thread	Pressure bar	Price
24-SDS-L8-G1/4E	8	L	G 1/4	PN 500	1.69
24-SDS-L8-G3/8E	8	L	G 3/8	PN 400	2.49
24-SDS-L10-G1/4E	10	L	G 1/4	PN 500	1.74
24-SDS-L10-G3/8E	10	L	G 3/8	PN 400	2.34
24-SDS-L10-G1/2E	10	L	G 1/2	PN 400	4.09
24-SDS-L12-G1/4E	12	L	G 1/4	PN 400	2.40
24-SDS-L12-G3/8E	12	L	G 3/8	PN 400	2.22
24-SDS-L12-G1/2E	12	L	G 1/2	PN 400	3.63
24-SDS-L12-G3/4E	12	L	G 3/4	PN 250	7.75
24-SDS-L15-G3/8E	15	L	G 3/8	PN 400	3.74
24-SDS-L15-G1/2E	15	L	G 1/2	PN 400	3.09
24-SDS-L15-G3/4E	15	L	G 3/4	PN 250	8.46
24-SDS-L18-G1/2E	18	L	G 1/2	PN 400	3.17
24-SDS-L18-G3/4E	18	L	G 3/4	PN 250	7.26
24-SDS-L18-G1E	18	L	G 1	PN 250	18.26
24-SDS-L22-G1/2E	22	L	G 1/2	PN 250	9.83
24-SDS-L22-G3/4E	22	L	G 3/4	PN 250	4.70
24-SDS-L22-G1E	22	L	G 1	PN 250	15.13
24-SDS-L28-G3/4E	28	L	G 3/4	PN 250	16.49
24-SDS-L28-G1E	28	L	G 1	PN 250	9.05
24-SDS-L35-G1E	35	L	G 1	PN 250	20.54
24-SDS-L35-G11/4E	35	L	G 1 1/4	PN 250	13.05
24-SDS-L35-G11/2E	35	L	G 1 1/2	PN 250	35.52
24-SDS-L42-G11/4E	42	L	G 1 1/4	PN 250	19.17
24-SDS-L42-G11/2E	42	L	G 1 1/2	PN 250	16.38

Male Stud c/w Peflex Seal Ring - BSPP - (S) Series

FE QC: 4303



New

▶▶▶ 19 More Variants available online, or Call Us

Part Number	Tube O/D (mm)	Series	BSPP Male Thread	Pressure bar	Price
24-SDS-S8-G3/8E	8	S	G 3/8	PN 800	5.22
24-SDS-S12-G1/4E	12	S	G 1/4	PN 630	4.86
24-SDS-S12-G3/8E	12	S	G 3/8	PN 630	2.52
24-SDS-S12-G1/2E	12	S	G 1/2	PN 630	3.30
24-SDS-S16-G3/8E	16	S	G 3/8	PN 630	9.03
24-SDS-S16-G1/2E	16	S	G 1/2	PN 630	3.59
24-SDS-S16-G3/4E	16	S	G 3/4	PN 420	7.09
24-SDS-S16-G1E	16	S	G 1	PN 420	30.73
24-SDS-S20-G1/2E	20	S	G 1/2	PN 420	10.07
24-SDS-S25-G3/4E	25	S	G 3/4	PN 420	16.01
24-SDS-S25-G1E	25	S	G 1	PN 420	9.38
24-SDS-S25-G11/4E	25	S	G 1 1/4	PN 420	16.03
24-SDS-S30-G1E	30	S	G 1	PN 420	20.36
24-SDS-S30-G11/4E	30	S	G 1 1/4	PN 420	15.77
24-SDS-S38-G1E	38	S	G 1	PN 420	20.53
24-SDS-S38-G11/4E	38	S	G 1 1/4	PN 420	23.58

Male Stud c/w 60 Deg Coned End (L) (S) Series

FE QC: 4304



New

▶▶▶ 1 More Variant available online, or Call Us

Part Number	Tube O.D	Series	BSPP Male Thread	Pressure (bar)	Price
24-SDS-L6-G1/4A	6	L	1/4"	PN400	1.65
24-SDS-L6-G3/8A	6	L	3/8"	PN400	3.88
24-SDS-L8-G1/8A	8	L	1/8"	PN400	7.05
24-SDS-L8-G1/4A	8	L	1/4"	PN400	2.26
24-SDS-L8-G3/8A	8	L	3/8"	PN400	8.63
24-SDS-L10-G1/4A	10	L	1/4"	PN400	1.66
24-SDS-L10-G3/8A	10	L	3/8"	PN400	2.91
24-SDS-L10-G1/2A	10	L	1/2"	PN400	6.67
24-SDS-L12-G1/4A	12	L	1/4"	PN400	4.64
24-SDS-L12-G3/8A	12	L	3/8"	PN400	2.82
24-SDS-L12-G1/2A	12	L	1/2"	PN400	3.68
24-SDS-L15-G3/8A	15	L	3/8"	PN400	4.08
24-SDS-L15-G1/2A	15	L	1/2"	PN400	3.23
24-SDS-L18-G1/2A	18	L	1/2"	PN400	4.32
24-SDS-L18-G3/4A	18	L	3/4"	PN400	11.69
24-SDS-L22-G1/2A	22	L	1/2"	PN200	10.38
24-SDS-L22-G3/4A	22	L	3/4"	PN200	7.47
24-SDS-L28-G3/4A	28	L	3/4"	PN200	14.95
24-SDS-L28-G1A	28	L	1"	PN200	10.10
24-SDS-L35-G11/4A	35	L	1 1/4"	PN200	14.06
24-SDS-L42-G11/4A	42	L	1 1/4"	PN200	29.33
24-SDS-L42-G11/2A	42	L	1 1/2"	PN200	19.47
24-SDS-S6-G1/4A	6	S	1/4"	PN500	10.20
24-SDS-S8-G1/4A	8	S	1/4"	PN500	3.41
24-SDS-S10-G1/4A	10	S	1/4"	PN500	3.95
24-SDS-S10-G3/8A	10	S	3/8"	PN500	2.71
24-SDS-S12-G1/4A	12	S	1/4"	PN400	11.50
24-SDS-S12-G3/8A	12	S	3/8"	PN400	9.73
24-SDS-S12-G1/2A	12	S	1/2"	PN400	9.66
24-SDS-S14-G1/2A	14	S	1/2"	PN400	17.02
24-SDS-S16-G3/8A	16	S	3/8"	PN400	10.75
24-SDS-S16-G1/2A	16	S	1/2"	PN400	3.96
24-SDS-S16-G3/4A	16	S	3/4"	PN400	17.06
24-SDS-S20-G1/2A	20	S	1/2"	PN200	12.84
24-SDS-S20-G3/4A	20	S	3/4"	PN200	11.38
24-SDS-S25-G3/4A	25	S	3/4"	PN200	16.06
24-SDS-S25-G1A	25	S	1"	PN200	11.88
24-SDS-S30-G1A	30	S	1"	PN200	25.70
24-SDS-S30-G11/4A	30	S	1 1/4"	PN200	16.56
24-SDS-S38-G11/2A	38	S	1 1/2"	PN200	24.93

F/Male Stud Coupling - Metric to Tube - (L) (S) Series

FE QC: 4305



New

▶▶▶ 15 More Variants available online, or Call Us

Part Number	Tube O/D (mm)	Series	Metric F/ male	Pressure bar	Price
24-S-L28-IM33	28	L	M 33 x 2	PN 160	47.37
24-S-L35-IM42	35	L	M 42 x 2	PN 160	58.85
24-S-L42-IM48	42	L	M 48 x 2	PN 160	85.14
24-S-S10-IM16	10	S	M 16 x 1.5	PB 630	11.63
24-S-S25-IM33	25	S	M 33 x 2	PB 400	50.92
24-S-S30-IM48	30	S	M 42 x 2	PB 400	63.61
24-S-S38-IM48	38	S	M 48 x 2	PB 315	89.82

F/Male Stud Coupling - BSPP to Tube - (L) (S) Series



FE QC: 4306



22 More Variants available online, or Call Us

Part Number	Tube O/D (mm)	Series	BSPP Female Thread	Pressure bar	Price
24-S-L6-IG1/8	6	L	G 1/8	PN 315	1.85
24-S-L6-IG1/4	6	L	G 1/4	PN 315	22.64
24-S-L10-IG3/8	10	L	G 3/8	PN 315	14.49
24-S-L10-IG1/2	10	L	G 1/2	PN 315	20.33
24-S-L12-IG1/4	12	L	G 1/4	PN 315	15.74
24-S-L12-IG1/2	12	L	G 1/2	PN 315	11.92
24-S-L15-IG1/2	15	L	G 1/2	PN 315	3.67
24-S-L28-IG1	28	L	G 1	PN 160	20.20
24-S-L42-IG1 1/2	42	L	G 1 1/2	PN 160	36.00
24-S-S30-IG1 1/4	30	S	G 1 1/4	PB 400	33.17

Tube Tube Coupling - Straight - (LL) (L) (S) Series



FE QC: 4307



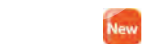
9 More Variants available online, or Call Us

Part Number	Tube O/D (mm)	Series	Pressure bar	Price
24-S-L6	6	L	PN 500	0.89
24-S-L12	12	L	PN 400	1.47
24-S-L15	15	L	PN 400	2.16
24-S-L18	18	L	PN 400	2.90
24-S-L22	22	L	PN 250	4.10
24-S-L28	28	L	PN 250	8.04
24-S-L35	35	L	PN 250	11.57
24-S-L42	42	L	PN 250	16.94
24-S-S8	8	S	PN 800	1.48
24-S-S12	12	S	PN 630	1.89
24-S-S16	16	S	PN 630	3.33
24-S-S20	20	S	PN 420	5.11
24-S-S25	25	S	PN 420	8.41
24-S-S30	30	S	PN 420	13.39
24-S-S38	38	S	PN 420	17.41

Tube Tube Coupling Reducer - (LL) (L) (S) Series



FE QC: 4308



38 More Variants available online, or Call Us

Part Number	Tube O/D (mm)	Series	Pressure bar	Price
24-S-L12-L10	12-10	L	PN 400	4.29
24-S-L15-L6	15-6	L	PN 400	11.49
24-S-L15-L8	15-8	L	PN 400	19.11
24-S-L15-L10	15-10	L	PN 400	5.46
24-S-L15-L12	15-12	L	PN 400	5.47
24-S-L18-L15	18-15	L	PN 400	7.56
24-S-L22-L12	22-12	L	PN 250	13.10
24-S-L22-L15	22-15	L	PN 250	9.59
24-S-L22-L18	22-18	L	PN 250	9.72
24-S-L28-L15	28-15	L	PN 250	74.07
24-S-L28-L18	28-18	L	PN 250	21.06
24-S-L28-L22	28-22	L	PN 250	20.50
24-S-L42-L28	42-28	L	PN 250	40.91
24-S-S20-S14	20-14	S	PN 420	37.92
24-S-S30-S20	30-20	S	PN 420	29.68
24-S-S30-S25	30-25	S	PN 420	29.79

Tube Tube Coupling - Elbow - (LL) (L) (S) Series



FE QC: 4309



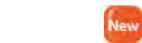
10 More Variants available online, or Call Us

Part Number	Tube O/D (mm)	Series	Pressure bar	Price
24-E-L8-P	8	L	PN 500	4.13
24-E-L12-P	12	L	PN 400	5.08
24-E-L15	15	L	PN 400	6.92
24-E-L22	22	L	PN 250	12.22
24-E-L28	28	L	PN 250	18.73
24-E-L35	35	L	PN 250	28.42
24-E-L42	42	L	PN 250	39.77
24-E-S10-P	10	S	PN 800	6.25
24-E-S12-P	12	S	PN 630	6.30
24-E-S16	16	S	PN 630	8.75
24-E-S25	25	S	PN 420	19.00
24-E-S30	30	S	PN 420	28.15
24-E-S38	38	S	PN 420	40.75

Elbow - Metric Tapered (keg) - (LL) (L) (S) Series



FE QC: 4310



19 More Variants available online, or Call Us

Part Number	Tube O/D (mm)	Series	Male Metric Taper	Pressure bar	Price
24-SDE-L12-M16T-P	12	L	M 16 x 1.5 keg	PN 315	6.43

Elbow - BSPT - (LL) (L) (S) Series



FE QC: 4311



21 More Variants available online, or Call Us

Part Number	Tube O/D (mm)	Series	BSPT Male	Pressure bar	Price
24-SDE-LL4-R1/8T	4	LL	1/8"	PN 100	4.12
24-SDE-LL6-R1/8T-P	6	LL	1/8"	PN 100	4.31
24-SDE-L6-R1/4T-P	6	L	1/4"	PN 315	15.87
24-SDE-L6-R3/8T-P	6	L	3/8"	PN 315	21.86
24-SDE-L8-R1/8T-P	8	L	1/8"	PN 315	19.29
24-SDE-L8-R1/4T-P	8	L	1/4"	PN 315	4.68
24-SDE-L10-R1/4T-P	10	L	1/4"	PN 315	5.19
24-SDE-L10-R1/2T	10	L	1/2"	PN 315	36.47
24-SDE-L12-R3/8T-P	12	L	3/8"	PN 315	6.25
24-SDE-L12-R1/2T	12	L	1/2"	PN 315	14.61
24-SDE-L18-R1/2T	18	L	1/2"	PN 315	9.34
24-SDE-L18-R3/4T	18	L	3/4"	PN 160	25.79
24-SDE-S6-R1/4T-P	6	S	1/4"	PB 630	6.07
24-SDE-S8-R1/4T-P	8	S	1/4"	PB 630	6.27
24-SDE-S20-R1/2T	20	S	1/2"	PB 400	44.34
24-SDE-S20-R3/4T	20	S	3/4"	PB 400	35.18

Elbow - NPT - (LL) (L) (S) Series



FE QC: 4312



20 More Variants available online, or Call Us

Part Number	Tube O/D (mm)	Series	NPT Male Thread	Pressure bar	Price
24-SDE-L22-N3/4T	22	L	3/4 NPT	PN 160	17.70
24-SDE-L28-N1T	28	L	1 NPT	PN 160	28.88
24-SDE-L42-N1 1/2T	42	L	1 1/2 NPT	PN 160	69.57
24-SDE-S20-N3/4T	20	S	3/4 NPT	PN 400	19.24
24-SDE-S25-N1T	25	S	1 NPT	PN 400	28.97
24-SDE-S30-N1 1/4T	30	S	1 1/4 NPT	PN 400	48.45
24-SDE-S38-N1 1/2T	38	S	1 1/2 NPT	PN 315	75.03

Elbow c/w Swivel - (L) (S) Series



FE QC: 4313



2 More Variants available online, or Call Us

Part Number	Tube O/D (mm)	Series	Pressure bar	Price
24-SWE-L6	6	L	PN 315	5.18
24-SWE-L8	8	L	PN 315	5.19
24-SWE-L10	10	L	PN 315	5.71
24-SWE-L12	12	L	PN 315	7.16
24-SWE-L15	15	L	PN 315	8.18
24-SWE-L18	18	L	PN 315	11.43
24-SWE-L22	22	L	PN 160	16.01
24-SWE-L28	28	L	PN 160	24.74
24-SWE-L35	35	L	PN 160	38.15
24-SWE-L42	42	L	PN 160	52.61
24-SWE-S6	6	S	PN 630	6.79
24-SWE-S8	8	S	PN 630	6.50
24-SWE-S12	12	S	PN 630	7.84
24-SWE-S16	16	S	PN 400	11.47
24-SWE-S20	20	S	PN 400	17.13
24-SWE-S25	25	S	PN 400	26.00
24-SWE-S30	30	S	PN 400	38.50
24-SWE-S38	38	S	PN 315	55.84

Swivel Elbow - Soft Seat - 90 Degree - (L) (S) Series



FE QC: 4314



4 More Variants available online, or Call Us

Part Number	Tube O/D (mm)	Series	Pressure bar	Price
24-SW0E-L8-P	8	L	PN 500	6.02
24-SW0E-L10	10	L	PN 500	6.58
24-SW0E-L12	12	L	PN 400	9.12
24-SW0E-L15	15	L	PN 400	9.12
24-SW0E-L18	18	L	PN 400	12.72
24-SW0E-L22	22	L	PN 250	17.43
24-SW0E-L28	28	L	PN 250	26.35
24-SW0E-L35	35	L	PN 250	39.52
24-SW0E-L42	42	L	PN 250	58.84
24-SW0E-S8-P	8	S	PN 800	7.68
24-SW0E-S12	12	S	PN 630	8.88
24-SW0E-S16	16	S	PN 630	13.08
24-SW0E-S20	20	S	PN 420	18.64
24-SW0E-S25	25	S	PN 420	27.69
24-SW0E-S30	30	S	PN 420	39.75
24-SW0E-S38	38	S	PN 420	60.13

Swivel Elbow - Soft Seat - 45 Degree - (L) (S) Series



FE QC: 4315



▶▶▶ 9 More Variants available online, or Call Us

Part Number	Tube O/D (mm)	Series	Pressure bar	Price
24-SWOE45-L35	35	L	PN 250	82.73
24-SWOE45-L42	42	L	PN 250	88.46
24-SWOE45-S6	6	S	PN 800	29.04
24-SWOE45-S8	8	S	PN 800	29.11
24-SWOE45-S10	10	S	PN 800	29.23
24-SWOE45-S12	12	S	PN 630	29.31
24-SWOE45-S14	14	S	PN 630	29.79
24-SWOE45-S16	16	S	PN 630	30.27
24-SWOE45-S20	20	S	PN 420	39.04
24-SWOE45-S25	25	S	PN 420	46.72
24-SWOE45-S30	30	S	PN 420	84.08

Adjustable Elb-90 Deg-Metric Parallel-C/w Peflex Seal-L/S Series



FE QC: 4316



▶▶▶ 28 More Variants available online, or Call Us

Part Number	Tube O/D (mm)	Series	Metric Male	Pressure bar	Price
24-SDAE-S12-M18E	12	S	M 18 x 1.5	PN 315	23.98

Adjustable Elb-90 Deg-BSPP-C/w Peflex Seal-L/S Series



FE QC: 4317



▶▶▶ 16 More Variants available online, or Call Us

Part Number	Tube O/D (mm)	Series	BSPP Male Thread	Pressure bar	Price
24-SDAE-L6-G1/8E	6	L	G 1/8	PN 315	13.57
24-SDAE-L8-G1/4E	8	L	G 1/4	PN 315	12.91
24-SDAE-L10-G1/4E	10	L	G 1/4	PN 315	12.32
24-SDAE-L12-G3/8E	12	L	G 3/8	PN 315	14.16
24-SDAE-L22-G3/4E	22	L	G 3/4	PN 160	25.42
24-SDAE-L28-G1E	28	L	G 1	PN 160	39.63
24-SDAE-L35-G11/4E	35	L	G 1 1/4	PN 160	73.75
24-SDAE-L42-G11/2E	42	L	G 1 1/2	PN 160	89.04
24-SDAE-S6-G1/4E	6	S	G 1/4	PN 315	20.26
24-SDAE-S20-G3/4E	20	S	G 3/4	PN 250	24.59
24-SDAE-S25-G1E	25	S	G 1	PN 250	39.27
24-SDAE-S30-G11/4E	30	S	G 1 1/4	PN 160	73.62
24-SDAE-S38-G11/2E	38	S	G 1 1/2	PN 160	81.32

Adjustable Elb-90 Deg-Metric Parallel-C/w NBR Seal-L/S Series



FE QC: 4318



▶▶▶ 15 More Variants available online, or Call Us

Part Number	Tube O/D (mm)	Series	Metric Male	Pressure bar	Price
24-SDAE-L10-M14F	10	L	M 14 x 1.5	PN 315	8.23
24-SDAE-L22-M27F	22	L	M 27 x 2	PN 160	15.55
24-SDAE-L28-M33F	28	L	M 33 x 2	PN 160	30.14
24-SDAE-L35-M42F	35	L	M 42 x 2	PN 160	50.20
24-SDAE-L42-M48F	42	L	M 48 x 2	PN 160	63.32
24-SDAE-S25-M33F	25	S	M 33 x 2	PN 315	30.14
24-SDAE-S30-M42F	30	S	M 42 x 2	PN 250	50.20
24-SDAE-S38-M48F	38	S	M 48 x 2	PN 200	63.32

Tee - c/w Metric Taper (keg) Thread on The Run - (LL) (L) (S) Series



FE QC: 4320



▶▶▶ 12 More Variants available online, or Call Us

Part Number	Tube O/D (mm)	Series	Male Metric Taper	Pressure bar	Price
24-SDL-L15-M18T	15	L	M 18 x 1.5 keg	PN 315	52.28
24-SDL-L18-M22T	18	L	M 22 x 1.5 keg	PN 315	52.05
24-SDL-S12-M18T-P	12	S	M 18 x 1.5 keg	PB 630	30.76

Tee - c/w BSPT Thread on The Run - (LL) (L) (S) Series



FE QC: 4321



▶▶▶ 10 More Variants available online, or Call Us

Part Number	Tube O/D (mm)	Series	BSPT Male	Pressure bar	Price
24-SDL-L12-R3/8T-P	12	L	3/8"	PN 315	16.91
24-SDL-L15-R1/2T	15	L	1/2"	PN 315	29.30
24-SDL-S12-R3/8T-P	12	S	3/8"	PB 630	20.88
24-SDL-S14-R1/2T	14	S	1/2"	PB 630	29.61
24-SDL-S16-R1/2T	16	S	1/2"	PB 400	32.71

Tee - c/w Metric Taper (keg) Thread on the Branch - (LL) (L) (S) Series



FE QC: 4322



▶▶▶ 12 More Variants available online, or Call Us

Part Number	Tube O/D (mm)	Series	Male Metric Taper	Pressure bar	Price
24-SDT-L15-M18T	15	L	M 18 x 1.5 keg	PN 315	36.48
24-SDT-L18-M22T	18	L	M 22 x 1.5 keg	PN 315	55.51
24-SDT-S16-M22T	16	S	M 22 x 1.5 keg	PB 400	35.49

Tee - c/w BSPT Thread on The Branch - (LL) (S) Series



FE QC: 4323



▶▶▶ 14 More Variants available online, or Call Us

Part Number	Tube O/D (mm)	Series	BSPT Male	Pressure bar	Price
24-SDT-S14-R1/2T	14	S	1/2"	PB 630	29.82
24-SDT-S16-R1/2T	16	S	1/2"	PB 400	31.74

Equal Tee - (LL) (L) (S) Series



FE QC: 4324



▶▶▶ 11 More Variants available online, or Call Us

Part Number	Tube O/D (mm)	Series	Pressure bar	Price
24-T-L6-P	6	L	PN 500	4.82
24-T-L8-P	8	L	PN 500	5.19
24-T-L12-P	12	L	PN 400	6.85
24-T-L15	15	L	PN 400	8.92
24-T-L18	18	L	PN 400	11.10
24-T-L28	28	L	PN 250	25.58
24-T-L35	35	L	PN 250	34.95
24-T-L42	42	L	PN 250	55.15
24-T-S12-P	12	S	PN 630	7.39
24-T-S16	16	S	PN 630	11.31
24-T-S20	20	S	PN 420	18.79
24-T-S25	25	S	PN 420	26.10
24-T-S30	30	S	PN 420	34.62

Unequal Tee - (L) Series



FE QC: 4325



▶▶▶ 34 More Variants available online, or Call Us

Part Number	Tube O/D (mm)	Series	Pressure bar	Price
24-T-L6-L10-L6-P	6-10-6	L	PN 500	30.76
24-T-L10-L16-L10-P	10-6-10	L	PN 500	13.24
24-T-L10-L15-L10	10-15-10	L	PN 400	30.85
24-T-L12-L12-L10-P	12-12-10	L	PN 400	44.64
24-T-L12-L18-L12	12-18-12	L	PN 400	43.45
24-T-L12-L16-L15	15-6-15	L	PN 400	38.60
24-T-L15-L8-L15	15-8-15	L	PN 400	69.10
24-T-L15-L10-L10	15-10-10	L	PN 400	35.72
24-T-L15-L15-L12	15-15-12	L	PN 400	20.44
24-T-L15-L18-L15	15-18-15	L	PN 400	41.98
24-T-L15-L22-L15	15-22-15	L	PN 250	55.65
24-T-L18-L10-L10	18-10-10	L	PN 400	56.65
24-T-L18-L15-L18	18-15-18	L	PN 400	31.65
24-T-L18-L18-L10	18-18-10	L	PN 400	37.20
24-T-L18-L22-L18	18-22-18	L	PN 250	98.41
24-T-L22-L10-L22	22-10-22	L	PN 250	61.62
24-T-L22-L15-L15	22-15-15	L	PN 250	63.62
24-T-L22-L15-L22	22-15-22	L	PN 250	39.30
24-T-L22-L18-L18	22-18-18	L	PN 250	54.73
24-T-L22-L18-L22	22-18-22	L	PN 250	46.31
24-T-L22-L22-L18	22-22-18	L	PN 250	44.34
24-T-L22-L28-L22	22-28-22	L	PN 250	CALL
24-T-L28-L10-L28	28-10-28	L	PN 250	93.04
24-T-L28-L12-L28	28-12-28	L	PN 250	58.42
24-T-L28-L15-L28	28-15-28	L	PN 250	68.28
24-T-L28-L18-L28	28-18-28	L	PN 250	78.38
24-T-L28-L22-L22	28-22-22	L	PN 250	93.91
24-T-L28-L22-L28	28-22-28	L	PN 250	63.63
24-T-L35-L18-L35	35-18-35	L	PN 250	73.06
24-T-L35-L28-L35	35-28-35	L	PN 250	76.97
24-T-L42-L18-L42	42-18-42	L	PN 250	87.93

Unequal Tee - (S) Series



FE QC: 4326



▶▶▶ 13 More Variants available online, or Call Us

Part Number	Tube O/D (mm)	Series	Pressure bar	Price
24-T-S12-S16-S12	12-16-12	S	PN 630	33.50
24-T-S16-S6-S16	16-6-16	S	PN 630	49.58
24-T-S16-S8-S16	16-8-16	S	PN 630	35.37
24-T-S16-S20-S16	16-20-16	S	PN 420	54.45
24-T-S20-S10-S20	20-10-20	S	PN 420	76.59
24-T-S20-S12-S20	20-12-20	S	PN 420	76.52
24-T-S20-S16-S20	20-16-20	S	PN 420	55.56
24-T-S20-S25-S20	20-25-20	S	PN 420	70.98
24-T-S25-S12-S25	25-12-25	S	PN 420	72.73
24-T-S25-S16-S25	25-16-25	S	PN 420	60.97
24-T-S25-S20-S25	25-20-25	S	PN 420	66.62
24-T-S25-S30-S25	25-30-25	S	PN 420	160.75
24-T-S30-S20-S30	30-20-30	S	PN 420	81.20

Tee c/w Swivel on the Branch - (L) (S) Series



FE QC: 4327



▶▶▶ 10 More Variants available online, or Call Us

Part Number	Tube O/D (mm)	Series	Pressure bar	Price
24-SWT-L15	15	L	PN 315	12.02
24-SWT-L22	22	L	PN 160	25.67
24-SWT-L28	28	L	PN 160	37.25
24-SWT-L42	42	L	PN 160	71.97
24-SWT-S12	12	S	PN 630	13.41
24-SWT-S16	16	S	PN 400	15.74
24-SWT-S20	20	S	PN 400	26.78
24-SWT-S25	25	S	PN 400	38.88
24-SWT-S30	30	S	PN 400	51.26
24-SWT-S38	38	S	PN 315	76.03

Tee c/w Swivel on the Run - (L) (S) Series



FE QC: 4328



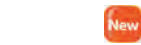
▶▶▶ 6 More Variants available online, or Call Us

Part Number	Tube O/D (mm)	Series	Pressure bar	Price
24-SWL-L6	6	L	PN 315	7.61
24-SWL-L8	8	L	PN 315	7.84
24-SWL-L10	10	L	PN 315	8.61
24-SWL-L12	12	L	PN 315	9.72
24-SWL-L15	15	L	PN 315	12.66
24-SWL-L18	18	L	PN 315	16.44
24-SWL-L28	28	L	PN 160	37.74
24-SWL-L42	42	L	PN 160	71.38
24-SWL-S8	8	S	PN 630	9.71
24-SWL-S12	12	S	PN 630	11.95
24-SWL-S16	16	S	PN 400	17.75
24-SWL-S20	20	S	PN 400	26.47
24-SWL-S25	25	S	PN 400	39.31
24-SWL-S30	30	S	PN 400	52.69

Swivel Tee - On Branch - Soft Seat - (L) (S) Ser



FE QC: 4329



▶▶▶ 10 More Variants available online, or Call Us

Part Number	Tube O/D (mm)	Series	Pressure bar	Price
24-SWOT-L8-P	8	L	PN 500	9.54
24-SWOT-L12-P	12	L	PN 400	10.97
24-SWOT-L22	22	L	PN 250	29.49
24-SWOT-L28	28	L	PN 250	42.37
24-SWOT-L35	35	L	PN 250	56.16
24-SWOT-L42	42	L	PN 250	90.39
24-SWOT-S12	12	S	PN 630	14.23
24-SWOT-S16	16	S	PN 630	19.26
24-SWOT-S20	20	S	PN 420	31.02
24-SWOT-S38	38	S	PN 420	93.27

Adjustable Tee - Metric Parallel on the Run - (L) (S) Series



FE QC: 4330



▶▶▶ 18 More Variants available online, or Call Us

Part Number	Tube O/D (mm)	Series	Metric Male	Pressure bar	Price
24-SDAL-L15-M18F	15	L	M 18 x 1.5	PN 315	16.22

Swivel Tee - On The Run - Soft Seat - (L) (S) Ser



FE QC: 4332



▶▶▶ 5 More Variants available online, or Call Us

Part Number	Tube O/D (mm)	Series	Pressure bar	Price
24-SWOL-L6-P	6	L	PN 500	9.50
24-SWOL-L8-P	8	L	PN 500	9.66
24-SWOL-L10-P	10	L	PN 500	10.53
24-SWOL-L12-P	12	L	PN 400	11.65
24-SWOL-L15	15	L	PN 400	15.06
24-SWOL-L22	22	L	PN 250	29.20
24-SWOL-L28	28	L	PN 250	42.87
24-SWOL-L42	42	L	PN 250	91.86
24-SWOL-S8-P	8	S	PN 800	10.66
24-SWOL-S10-P	10	S	PN 800	13.15
24-SWOL-S16	16	S	PN 630	21.53
24-SWOL-S20	20	S	PN 420	30.81
24-SWOL-S25	25	S	PN 420	45.07
24-SWOL-S30	30	S	PN 420	58.24
24-SWOL-S38	38	S	PN 420	96.05

Equal Cross - (LL) (L) (S) Series



FE QC: 4334



▶▶▶ 15 More Variants available online, or Call Us

Part Number	Tube O/D (mm)	Series	Pressure bar	Price
24-K-L22	22	L	PN 160	48.22
24-K-L35	35	L	PN 160	83.30
24-K-L42	42	L	PN 160	114.64
24-K-S14	14	S	PN 630	38.69
24-K-S20	20	S	PN 400	51.76
24-K-S25	25	S	PN 400	57.27
24-K-S30	30	S	PN 400	79.65
24-K-S38	38	S	PN 315	114.69

Bulkhead coupling - Straight - (L) (S) Series



FE QC: 4335



▶▶▶ 11 More Variants available online, or Call Us

Part Number	Tube O/D (mm)	Series	Pressure bar	Price
24-BHSLN-L8	8	L	PN 500	2.95
24-BHSLN-L10	10	L	PN 500	3.83
24-BHSLN-L12	12	L	PN 400	4.30
24-BHSLN-L15	15	L	PN 400	6.91
24-BHSLN-L22	22	L	PN 250	13.64
24-BHSLN-L28	28	L	PN 250	19.80
24-BHSLN-S16	16	S	PN 630	10.81
24-BHSLN-S20	20	S	PN 420	17.18
24-BHSLN-S25	25	S	PN 420	26.75

Bulkhead Coupling - Elbow - (L) (S) Series



FE QC: 4336



▶▶▶ 11 More Variants available online, or Call Us

Part Number	Tube O/D (mm)	Series	Pressure bar	Price
24-BHELN-L8	8	L	PN 315	7.49
24-BHELN-L12	12	L	PN 315	10.21
24-BHELN-L15	15	L	PN 315	11.81
24-BHELN-L22	22	L	PN 160	26.34
24-BHELN-L28	28	L	PN 160	39.60
24-BHELN-L42	42	L	PN 160	88.65
24-BHELN-S16	16	S	PN 400	15.76
24-BHELN-S30	30	S	PN 400	58.05
24-BHELN-S38	38	S	PN 315	87.54

Banjo - Metric Parallel - c/w Metal Sealing-Edge Ring - (LL) (L) (S) Series



FE QC: 4338



▶▶▶ 18 More Variants available online, or Call Us

Part Number	Tube O/D (mm)	Series	Metric Male	Pressure bar	Price
24-BSE-L22-M26B	22	L	M 26 x 1.5	PB 160	26.23

Banjo - BSPP - c/w Metal Sealing-Edge Ring - LL) (L) (S) Series



FE QC: 4340



▶▶▶ 14 More Variants available online, or Call Us

Part Number	Tube O/D (mm)	Series	BSPP Male Thread	Pressure bar	Price
24-BSE-LL6-G1/8B	6	LL	G 1/8	PB 100	10.82
24-BSE-L6-G1/8B	6	L	G 1/8	PB 250	9.27
24-BSE-L10-G1/4B	10	L	G 1/4	PB 250	11.49
24-BSE-L12-G3/8B	12	L	G 3/8	PB 250	13.41
24-BSE-S10-G3/8B	10	S	G 3/8	PB 250	13.61
24-BSE-S16-G1/2B	16	S	G 1/2	PB 160	19.52

Banjo - BSPP - c/w Soft Seal - (LL) (L) (S) Series



FE QC: 4341



▶▶▶ 20 More Variants available online, or Call Us

Part Number	Tube O/D (mm)	Series	BSPP Male Thread	Pressure bar	Price
24-BSE-L15-G3/8E	15	L	G 3/8	PB 250	35.29
24-BSE-L22-G3/4E	22	L	G 3/4	PB 160	31.13

Banjo-Metric Parallel-Eccentric Flow-c/w Metal Sealing-Edge Ring-L/S Series



FE QC: 4342



▶▶▶ 16 More Variants available online, or Call Us

Part Number	Tube O/D (mm)	Series	Metric Male	Pressure bar	Price
24-BEE-L12-M18B	12	L	M 18 x 1.5	PB 315	44.87
24-BEE-L15-M22B	15	L	M 22 x 1.5	PB 315	56.96
24-BEE-L22-M26B	22	L	M 26 x 1.5	PB 200	33.12
24-BEE-L35-M42B	35	L	M 42 x 2	PB 200	87.96
24-BEE-L42-M48B	42	L	M 48 x 2	PB 200	118.75
24-BEE-S20-M27B	20	S	M 27 x 2	PB 400	37.98
24-BEE-S30-M42B	30	S	M 42 x 2	PB 250	91.00
24-BEE-S38-M48B	38	S	M 48 x 2	PB 250	123.73

Banjo-Unrestricted Eccentric Flow-Metric Parallel c/w Soft Seal-L/S Series



FE QC: 4343



▶▶▶ 9 More Variants available online, or Call Us

Part Number	Tube O/D (mm)	Series	Metric Male	Pressure bar	Price
24-BEE-L6-M10E	6	L	M 10 x 1	PB 500	11.97
24-BEE-L10-M14E	10	L	M 14 x 1.5	PB 350	13.16
24-BEE-L12-M16E	12	L	M 16 x 1.5	PB 350	16.42
24-BEE-L18-M22E	18	L	M 22 x 1.5	PB 315	26.11
24-BEE-L22-M26E	22	L	M 26 x 1.5	PB 200	38.25
24-BEE-L28-M33E	28	L	M 33 x 2	PB 200	63.25
24-BEE-L35-M42E	35	L	M 42 x 2	PB 200	97.61
24-BEE-L42-M48E	42	L	M 48 x 2	PB 200	128.92
24-BEE-S8-M14E	8	S	M 14 x 1.5	PB 450	13.44
24-BEE-S12-M18E	12	S	M 18 x 1.5	PB 400	18.68
24-BEE-S20-M27E	20	S	M 27 x 2	PB 400	41.76
24-BEE-S25-M33E	25	S	M 33 x 2	PB 250	63.76
24-BEE-S30-M42E	30	S	M 42 x 2	PB 250	100.64
24-BEE-S38-M48E	38	S	M 48 x 2	PB 250	133.90

Banjo-Unrestr Eccentric Flow-BSPP-c/w Metal Seal Edge Ring-L/S Series



FE QC: 4344



▶▶▶ 8 More Variants available online, or Call Us

Part Number	Tube O/D (mm)	Series	BSPP Male Thread	Pressure bar	Price
24-BEE-L8-G1/4B	8	L	G 1/4	PB 400	10.59
24-BEE-L10-G1/4B	10	L	G 1/4	PB 350	10.77
24-BEE-L12-G1/2B	12	L	G 1/2	PB 315	37.82
24-BEE-L15-G1/2B	15	L	G 1/2	PB 315	16.85
24-BEE-L22-G3/4B	22	L	G 3/4	PB 200	36.48
24-BEE-L28-G1B	28	L	G 1	PB 200	57.63
24-BEE-L35-G11/4B	35	L	G 1 1/4	PB 200	87.38
24-BEE-L42-G11/2B	42	L	G 1 1/2	PB 200	118.37
24-BEE-S8-G1/4B	8	S	G 1/4	PB 450	11.04
24-BEE-S16-G1/2B	16	S	G 1/2	PB 400	22.51
24-BEE-S20-G3/4B	20	S	G 3/4	PB 400	37.74
24-BEE-S25-G1B	25	S	G 1	PB 250	58.14
24-BEE-S30-G11/4B	30	S	G 1 1/4	PB 250	90.43
24-BEE-S38-G11/2B	38	S	G 1 1/2	PB 250	123.36

Banjo - Unrestricted Eccentric Flow - BSPP - c/w Soft Seal - (L) (S) Series



FE QC: 4345



▶▶▶ 9 More Variants available online, or Call Us

Part Number	Tube O/D (mm)	Series	BSPP Male Thread	Pressure bar	Price
24-BEE-L6-G1/8E	6	L	G 1/8	PB 500	11.96
24-BEE-L6-G1/4E	6	L	G 1/4	PB 400	15.09
24-BEE-L8-G1/4E	8	L	G 1/4	PB 400	12.91
24-BEE-L10-G1/4E	10	L	G 1/4	PB 350	13.09
24-BEE-L12-G3/8E	12	L	G 3/8	PB 350	16.69
24-BEE-L22-G3/4E	22	L	G 3/4	PB 200	40.28
24-BEE-L28-G1E	28	L	G 1	PB 200	63.42
24-BEE-L35-G11/4E	35	L	G 1 1/4	PB 200	97.02
24-BEE-L42-G11/2E	42	L	G 1 1/2	PB 200	128.56
24-BEE-S10-G3/8E	10	S	G 3/8	PB 400	17.07
24-BEE-S12-G3/8E	12	S	G 3/8	PB 400	17.10
24-BEE-S20-G3/4E	20	S	G 3/4	PB 400	41.42
24-BEE-S25-G1E	25	S	G 1	PB 250	63.93
24-BEE-S30-G11/4E	30	S	G 1 1/4	PB 250	100.07
24-BEE-S38-G11/2E	38	S	G 1 1/2	PB 250	133.54

Banjo-High Pressure-Metric Parallel-c/w Metal Seal Edge Ring-L/S Series



FE QC: 4346



▶▶▶ 11 More Variants available online, or Call Us

Part Number	Tube O/D (mm)	Series	Metric Male	Pressure bar	Price
24-BCE-L10-M14B	10	L	M 14 x 1.5	PB 500	11.64
24-BCE-L22-M26B	22	L	M 26 x 1.5	PB 250	34.42
24-BCE-L28-M33B	28	L	M 33 x 2	PB 250	60.48
24-BCE-L35-M42B	35	L	M 42 x 2	PB 250	92.32
24-BCE-L42-M48B	42	L	M 48 x 2	PB 250	124.77
24-BCE-S20-M27B	20	S	M 27 x 2	PB 315	39.76
24-BCE-S25-M33B	25	S	M 33 x 2	PB 250	61.01
24-BCE-S30-M42B	30	S	M 42 x 2	PB 250	95.56
24-BCE-S38-M48B	38	S	M 48 x 2	PB 250	130.02

Banjo - High Pressure - Metric Parallel - c/w Soft Seal - (L) (S) Series

FE QC: 4347



12 More Variants available online, or Call Us

Part Number	Tube O/D (mm)	Series	Metric Male	Pressure bar	Price
24-BCE-L22-M26E	22	L	M 26 x 1.5	PB 250	39.92
24-BCE-L28-M33E	28	L	M 33 x 2	PB 250	66.18
24-BCE-L35-M42E	35	L	M 42 x 2	PB 250	102.06
24-BCE-L42-M48E	42	L	M 48 x 2	PB 250	135.07
24-BCE-S16-M22E	16	S	M 22 x 1.5	PB 400	27.68
24-BCE-S20-M27E	20	S	M 27 x 2	PB 315	43.60
24-BCE-S30-M42E	30	S	M 42 x 2	PB 250	105.33
24-BCE-S38-M48E	38	S	M 48 x 2	PB 250	140.32

Banjo - High Pressure - BSPP - c/w Metal Sealing-Edge Ring - (L) (S) Series

FE QC: 4348



12 More Variants available online, or Call Us

Part Number	Tube O/D (mm)	Series	BSPP Male Thread	Pressure bar	Price
24-BCE-L6-G1/8B	6	L	G 1/8	PB 500	10.34
24-BCE-L12-G3/8B	12	L	G 3/8	PB 400	14.71
24-BCE-L15-G1/2B	15	L	G 1/2	PB 400	17.29
24-BCE-L22-G3/4B	22	L	G 3/4	PB 250	38.26
24-BCE-L28-G1B	28	L	G 1	PB 250	60.36
24-BCE-L35-G1 1/4B	35	L	G 1 1/4	PB 250	91.72
24-BCE-L42-G1 1/2B	42	L	G 1 1/2	PB 250	124.36
24-BCE-S25-G1B	25	S	G 1	PB 250	60.93
24-BCE-S30-G1 1/4B	30	S	G 1 1/4	PB 250	94.95
24-BCE-S38-G1 1/2B	38	S	G 1 1/2	PB 250	129.66

Banjo - High Pressure - BSPP - c/w Soft Seal - (L) (S) Series

FE QC: 4349



10 More Variants available online, or Call Us

Part Number	Tube O/D (mm)	Series	BSPP Male Thread	Pressure bar	Price
24-BCE-L10-G1/4E	10	L	G 1/4	PB 500	13.90
24-BCE-L15-G1/2E	15	L	G 1/2	PB 400	21.09
24-BCE-L18-G1/2E	18	L	G 1/2	PB 400	45.66
24-BCE-L22-G3/4E	22	L	G 3/4	PB 250	41.98
24-BCE-L28-G1E	28	L	G 1	PB 250	66.22
24-BCE-L35-G1 1/4E	35	L	G 1 1/4	PB 250	101.49
24-BCE-L42-G1 1/2E	42	L	G 1 1/2	PB 250	134.67
24-BCE-S12-G3/8E	12	S	G 3/8	PB 400	18.06
24-BCE-S20-G3/4E	20	S	G 3/4	PB 315	43.31
24-BCE-S25-G1E	25	S	G 1	PB 250	66.79
24-BCE-S30-G1 1/4E	30	S	G 1 1/4	PB 250	104.73
24-BCE-S38-G1 1/2E	38	S	G 1 1/2	PB 250	139.96

Banjo - Tee - High Pressure - Metric Parallel - c/w Soft Seal - (L) (S) Series

FE QC: 4350

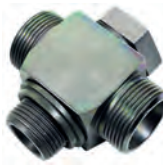


19 More Variants available online, or Call Us

Part Number	Tube O/D (mm)	Series	Metric Male	Pressure bar	Price
24-BCT-L15-M18E-P	15	L	M 18 x 1.5	PB 400	46.46

Banjo - Tee - High Pressure - BSPP - c/w Soft Seal - (L) (S) Series

FE QC: 4351



17 More Variants available online, or Call Us

Part Number	Tube O/D (mm)	Series	BSPP Male Thread	Pressure bar	Price
24-BCT-L12-G3/8E-P	12	L	G 3/8	PB 400	33.01
24-BCT-L15-G1/2E-P	15	L	G 1/2	PB 400	47.47
24-BCT-S16-G1/2E-P	16	S	G 1/2	PB 400	58.02

Rotary Coupling - Metric Parallel - (L) (S) Series

FE QC: 4352



13 More Variants available online, or Call Us

Part Number	Tube O/D (mm)	Series	Metric Male	Pressure bar	Price
24-RCE-L6-M10E-C10	6	L	M 10 x 1	PB 100	90.79
24-RCE-L10-M14E-C10	10	L	M 14 x 1.5	PB 100	97.83
24-RCE-S8-M14E-C10	8	S	M 14 x 1.5	PB 400	97.88
24-RCE-S16-M22E-C10	16	S	M 22 x 1.5	PB 400	169.71

Rotary Coupling - BSPP - (L) (S) Series

FE QC: 4353



14 More Variants available online, or Call Us

Part Number	Tube O/D (mm)	Series	BSPP Male Thread	Pressure bar	Price
24-RCE-L22-G3/4E-C10	22	L	G 3/4	PB 100	252.10
24-RCE-S14-G1/2E-C10	14	S	G 1/2	PB 400	170.12

Reducing Coupling - Swivel on one side - (S) to (S) Series

FE QC: 4360



28 More Variants available online, or Call Us

Part Number	Tube O/D (mm)	Description	Pressure bar	Price
24-SWS-S25-S10	25 to 10	(S)to(S)	PN 400	18.20
24-SWS-S25-S12	25 to 12	(S)to(S)	PN 400	14.56
24-SWS-S25-S14	25 to 14	(S)to(S)	PN 400	30.79
24-SWS-S25-S16	25 to 16	(S)to(S)	PN 400	14.06
24-SWS-S25-S20	25 to 20	(S)to(S)	PN 400	14.58
24-SWS-S30-S12	30 to 12	(S)to(S)	PN 400	19.29
24-SWS-S30-S16	30 to 16	(S)to(S)	PN 400	19.46
24-SWS-S30-S20	30 to 20	(S)to(S)	PN 400	19.06
24-SWS-S30-S25	30 to 25	(S)to(S)	PN 400	19.94
24-SWS-S38-S16	38 to 16	(S)to(S)	PN 315	29.64
24-SWS-S38-S20	38 to 20	(S)to(S)	PN 315	30.91
24-SWS-S38-S30	38 to 30	(S)to(S)	PN 315	30.91

Reducing Coupling - Swivel on (S) side - (S) to (L) Series

FE QC: 4362



6 More Variants available online, or Call Us

Part Number	Tube O/D (mm)	Description	Pressure bar	Price
24-SWS-S20-L18	20 to 18	(S)to(L)	PN 315	18.91

Reducing Coupling - Swivel on One Side - (L) to (L) Series

FE QC: 4363



35 More Variants available online, or Call Us

Part Number	Tube O/D (mm)	Description	Pressure bar	Price
24-SWS-L22-L6	22 to 6	(L)to(L)	PN 160	59.55
24-SWS-L28-L10	28 to 10	(L)to(L)	PN 160	15.52
24-SWS-L35-L28	35 to 28	(L)to(L)	PN 160	19.73
24-SWS-L42-L15	42 to 15	(L)to(L)	PN 160	54.99
24-SWS-L42-L18	42 to 18	(L)to(L)	PN 160	42.12
24-SWS-L42-L22	42 to 22	(L)to(L)	PN 160	26.17
24-SWS-L42-L28	42 to 28	(L)to(L)	PN 160	26.18

Reducing Coupling - Soft Seat - Swivel on One Side - (S) to (S) Series

FE QC: 4365



▶▶▶ 20 More Variants available online, or Call Us

Part Number	Tube O/D (mm)	Description	Pressure bar	Price
24-SW05-S14-S6	14-6	(S)to(S)	PN 630	18.07
24-SW05-S14-S8	14-8	(S)to(S)	PN 630	16.65
24-SW05-S16-S12	16-12	(S)to(S)	PN 630	6.83
24-SW05-S20-S12	20-12	(S)to(S)	PN 420	8.83
24-SW05-S20-S16	20-16	(S)to(S)	PN 420	8.83
24-SW05-S30-S6	30-6	(S)to(S)	PN 420	78.28
24-SW05-S30-S8	30-8	(S)to(S)	PN 420	33.44
24-SW05-S25-S10	25-10	(S)to(S)	PN 420	20.34
24-SW05-S25-S16	25-16	(S)to(S)	PN 420	15.08
24-SW05-S25-S20	25-20	(S)to(S)	PN 420	15.75
24-SW05-S30-S12	30-12	(S)to(S)	PN 420	21.36
24-SW05-S30-S16	30-16	(S)to(S)	PN 420	20.34
24-SW05-S30-S20	30-20	(S)to(S)	PN 420	19.87
24-SW05-S30-S25	30-25	(S)to(S)	PN 420	20.91
24-SW05-S38-S6	38-6	(S)to(S)	PN 420	56.23
24-SW05-S38-S8	38-8	(S)to(S)	PN 420	43.15
24-SW05-S38-S10	38-10	(S)to(S)	PN 420	51.55
24-SW05-S38-S12	38-12	(S)to(S)	PN 420	43.31
24-SW05-S38-S16	38-16	(S)to(S)	PN 420	35.05
24-SW05-S38-S20	38-20	(S)to(S)	PN 420	32.54
24-SW05-S38-S30	38-30	(S)to(S)	PN 420	51.75

Reducing Coupling - Soft Seat - Swivel End - (L) to (L) Series

FE QC: 4367



▶▶▶ 29 More Variants available online, or Call Us

Part Number	Tube O/D (mm)	Description	Pressure bar	Price
24-SW05-L15-L12	15-12	(L)to(L)	PN 400	4.77
24-SW05-L22-L15	22-15	(L)to(L)	PN 250	8.21
24-SW05-L28-L12	28-12	(L)to(L)	PN 250	15.68
24-SW05-L28-L18	28-18	(L)to(L)	PN 250	15.40
24-SW05-L28-L22	28-22	(L)to(L)	PN 250	15.40
24-SW05-L35-L8	35-8	(L)to(L)	PN 250	89.03
24-SW05-L35-L10	35-10	(L)to(L)	PN 250	71.09
24-SW05-L35-L18	35-18	(L)to(L)	PN 250	24.27
24-SW05-L35-L28	35-28	(L)to(L)	PN 250	20.77
24-SW05-L42-L6	42-6	(L)to(L)	PN 250	79.66
24-SW05-L42-L12	42-12	(L)to(L)	PN 250	48.41
24-SW05-L42-L15	42-15	(L)to(L)	PN 250	42.10
24-SW05-L42-L18	42-18	(L)to(L)	PN 250	45.57
24-SW05-L42-L22	42-22	(L)to(L)	PN 250	28.81
24-SW05-L42-L28	42-28	(L)to(L)	PN 250	27.14
24-SW05-L42-L35	42-35	(L)to(L)	PN 250	29.63

Swivel Distance Adaptor - Soft Seat - (L) (S) Series

FE QC: 4375



▶▶▶ 19 More Variants available online, or Call Us

Part Number	Tube O/D (mm)	Series	Pressure bar	Price
24-SW05-L22	22	L	PN 250	23.70

Welding couplings - Straight - (L) (S) Series

FE QC: 4376



▶▶▶ 9 More Variants available online, or Call Us

Part Number	Stub O/D (mm)	Series	Pressure bar	Price
24-WDS-L8-C00	12	8L	PN 315	1.71
24-WDS-L12-C00	16	12L	PN 315	2.14
24-WDS-L15-C00	19	15L	PN 315	2.64
24-WDS-L18-C00	22	18L	PN 315	3.27
24-WDS-L22-C00	27	22L	PN 160	5.04
24-WDS-L28-C00	32	28L	PN 160	9.71
24-WDS-L35-C00	40	35L	PN 160	13.99
24-WDS-L42-C00	46	42L	PN 160	20.31
24-WDS-S12-C00	17	12S	PN 630	3.11
24-WDS-S30-C00	36	30S	PN 400	14.36
24-WDS-S38-C00	44	38S	PN 315	21.67

Welding Bulkhead Coupling - (L) (S) Series

FE QC: 4377



▶▶▶ 12 More Variants available online, or Call Us

Part Number	Stub O/D (mm)	Series	Pressure bar	Price
24-WDBHS-L18-C00	32	18L	PN 315	16.95
24-WDBHS-L35-C00	50	35L	PN 160	36.40
24-WDBHS-L42-C00	60	42L	PN 160	57.01
24-WDBHS-S12-C00	28	12S	PN 630	13.58
24-WDBHS-S14-C00	30	14S	PN 630	20.59
24-WDBHS-S20-C00	38	20S	PN 400	23.09
24-WDBHS-S30-C00	50	30S	PN 400	35.38
24-WDBHS-S38-C00	60	38S	PN 315	56.32

Blanking Plug - For Stud - O-Ring - (L)(S) Series

FE QC: 4393



▶▶▶ 2 More Variants available online, or Call Us

Part Number	Tube O/D (mm)	Series	Pressure bar	Price
24-PLO-L/S8	8	L - S	PN 500/800	0.96
24-PLO-L/S10	10	L - S	PN 500/800	1.03
24-PLO-L/S12	12	L - S	PN 400/630	1.27
24-PLO-L15	15	L	PN 400	1.65
24-PLO-L18	18	L	PN 400	1.81
24-PLO-L22	22	L	PN 250	2.84
24-PLO-L28	28	L	PN 250	4.74
24-PLO-L42	42	L	PN 250	14.43
24-PLO-S14	14	S	PN 630	3.10
24-PLO-S16	16	S	PN 630	1.75
24-PLO-S20	20	S	PN 420	2.67
24-PLO-S25	25	S	PN 420	3.77
24-PLO-S30	30	S	PN 420	6.56
24-PLO-S38	38	S	PN 420	12.12

Blanking Plug - For Stud - Sealing Edge and O-Ring - (L) (S) Series

FE QC: 4394



▶▶▶ 4 More Variants available online, or Call Us

Part Number	Tube O/D (mm)	Series	Pressure bar	Price
24-PLOC-L8	8	L	PN 500	1.36
24-PLOC-L10	10	L	PN 500	1.47
24-PLOC-L12	12	L	PN 400	1.85
24-PLOC-L15	15	L	PN 400	2.47
24-PLOC-L18	18	L	PN 400	3.31
24-PLOC-L22	22	L	PN 250	4.97
24-PLOC-L28	28	L	PN 250	8.75
24-PLOC-L35	35	L	PN 250	14.33
24-PLOC-L42	42	L	PN 250	19.65
24-PLOC-S12	12	S	PN 630	2.01
24-PLOC-S14	14	S	PN 630	4.23
24-PLOC-S16	16	S	PN 630	3.31
24-PLOC-S20	20	S	PN 420	5.04
24-PLOC-S25	25	S	PN 420	8.24
24-PLOC-S30	30	S	PN 420	12.14
24-PLOC-S38	38	S	PN 420	20.09

Tube Reinforcing Sleeve - Brass

FE QC: 4396



▶▶▶ 27 More Variants available online, or Call Us

Part Number	Tube O/D (mm)	Price
24-RS-15-BS	18 x 1.5	2.22

Banjo Coupling Eccentric flow NBR O-Ring

FE QC: 4404



▶▶▶ 9 More Variants available online, or Call Us

Part Number	Metric Male	BSP Male Thread	Price
GP-SR-M16-G3/8E	M 16 x 1.5	G 3/8	4.85
GP-SR-M48-G11/2E	M 48 x 2	G 1 1/2	16.74

Product **Voss Form / SAE / ZAKO Flanges & Component Parts**

Voss Form O-Ring - FKM90 (L) or (S) Series

FE QC: 4500



▶▶▶ 14 More Variants available online, or Call Us

Part Number	Tube O/D (mm)	Series	Price
24-SQRMS-L28-FKM90	28	L	1.61
24-SQRMS-L35-FKM90	35	L	2.01

ZAKO- Ring Without O-Ring

FE QC: 4527



VOSS

▶▶▶ 33 More Variants available online, or Call Us

Part Number	Tube O/D (mm)	Price
Z-R-50X6-C19	50 x 6	117.90

ZAKO Threaded Base - 6000 Series

FE QC: 4530



VOSS

▶▶▶ 6 More Variants available online, or Call Us

Part Number	Tube O/D (mm)	Price
Z-FPT-50-6S11/2-IM16-C19	50	143.89
Z-FPT-38-6S11/4-IM14-C19	38	124.03

Product

▶ Voss SAE / Flanges & Component Parts c/w Nuts & Cutting Rings

Split SAE Flange adaptor - 3000 series (L) (S) Series

FE QC: 4542



VOSS

▶▶▶ 11 More Variants available online, or Call Us

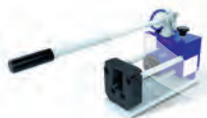
Part Number	Tube O/D (mm)	Series	Thread Size	Price
24-FSOC-S38-3S11/4-M12	38	S	1 1/4"	104.65

Product

▶ Voss Pre-Assembly Tools

VOSS Pre-Assembly Device Type 80 N3

TC QC: 7080



VOSS

▶▶▶ Full Range Shown Here

Part Number	Description	Price
5991080400	TD-TYPE80N3	2610.80

VOSS Pre-Assembly Device Type 90 Comfort

TC QC: 7081



VOSS

▶▶▶ Full Range Shown Here

Part Number	Description	Price
5992893000	TD-TYPE90C2	19548.15

VOSS Forming Machine VOSSForm 100

TC QC: 7078



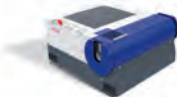
VOSS

▶▶▶ Full Range Shown Here

Part Number	Description	Price
5991008000	TD-TYPE100	56020.55

VOSS Forming Machine VOSSForm 100 Compact

TC QC: 7079



VOSS

▶▶▶ Full Range Shown Here

Part Number	Description	Price
5992895000	TD-TYPE100C	42638.58

Tube Former - 8 to 22mm Complete

EW QC: 4051



VOSS

▶▶▶ Full Range Shown Here

Part Number	Price
TD-TBM1	343.18

Vice held Pre-Assy Tool-STD-(LL) (L) (S) Series

EW QC: 4059



VOSS

▶▶▶ 10 More Variants available online, or Call Us

Part Number	Tube O/D (mm)	Series	Price
TD-CRPT-L15-M	15	L	61.98
TD-CRPT-L18-M	18	L	77.05
TD-CRPT-L22-M	22	L	78.73
TD-CRPT-L28-M	28	L	93.82
TD-CRPT-L35-M	35	L	123.95
TD-CRPT-L42-M	42	L	130.65
TD-CRPT-S10-M	10	S	53.60
TD-CRPT-S12-M	12	S	58.62
TD-CRPT-S16-M	16	S	77.05
TD-CRPT-S20-M	20	S	77.05
TD-CRPT-S25-M	25	S	87.10
TD-CRPT-S30-M	30	S	127.28
TD-CRPT-S38-M	38	S	132.32

M/C Pre-Assy Tool-Standard-(LL) (L) (S) Series

EW QC: 4061



VOSS

▶▶▶ 4 More Variants available online, or Call Us

Part Number	Tube O/D (mm)	Series	Price
TD-CRPT-L6-PA	6	L	66.77
TD-CRPT-L8-PA	8	L	66.77
TD-CRPT-L10-PA	10	L	66.77
TD-CRPT-L12-PA	12	L	66.77
TD-CRPT-L15-PA	15	L	66.77
TD-CRPT-L18-PA	18	L	84.02
TD-CRPT-L22-PA	22	L	84.02
TD-CRPT-L28-PA	28	L	84.02
TD-CRPT-L35-PA	35	L	89.38
TD-CRPT-L42-PA	42	L	89.38
TD-CRPT-S8-PA	8	S	66.77
TD-CRPT-S10-PA	10	S	66.77
TD-CRPT-S12-PA	12	S	66.77
TD-CRPT-S16-PA	16	S	84.02
TD-CRPT-S20-PA	20	S	84.02
TD-CRPT-S25-PA	25	S	84.02
TD-CRPT-S30-PA	30	S	89.38
TD-CRPT-S38-PA	38	S	89.38

M/C Pre-Assy Tool-High Performance Steel-(L) (S) Series

EW QC: 4062



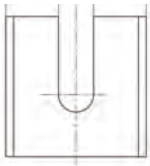
VOSS

▶▶▶ 18 More Variants available online, or Call Us

Part Number	Tube O/D (mm)	Series	Price
TD-CRPT-L28-PA-PM	28	L	364.52
TD-CRPT-L42-PA-PM	42	L	486.25

Support Plate-Type 80 -(L) (S) Series

EW QC: 4063



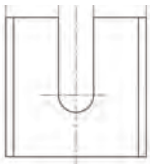
New

Full Range Shown Here

Part Number	Tube O/D (mm)	Series	Price
TD-CRCB-L/S6-TYPE80	6	L/S	128.98
TD-CRCB-L/S8-TYPE80	8	L/S	128.98
TD-CRCB-L/S10-TYPE80	10	L/S	128.98
TD-CRCB-L/S12-TYPE80	12	L/S	128.98
TD-CRCB-L15-TYPE80	15	L	128.98
TD-CRCB-L18-TYPE80	18	L	128.98
TD-CRCB-L22-TYPE80	22	L	128.98
TD-CRCB-L28-TYPE80	28	L	128.98
TD-CRCB-L35-TYPE80	35	L	128.98
TD-CRCB-L42-TYPE80	42	L	128.98
TD-CRCB-S14-TYPE80	14	S	128.98
TD-CRCB-S16-TYPE80	16	S	128.98
TD-CRCB-S20-TYPE80	20	S	128.98
TD-CRCB-S25-TYPE80	25	S	128.98
TD-CRCB-S30-TYPE80	30	S	128.98
TD-CRCB-S38-TYPE80	38	S	128.98

Support Plate-Type 90 -(L) (S) Series

EW QC: 4064



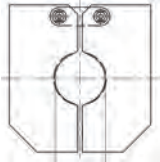
New

14 More Variants available online, or Call Us

Part Number	Tube O/D (mm)	Series	Price
TD-CRCB-L28	28	L	128.98
TD-CRCB-L42	42	L	128.98

M/C Tool for Std -BV10 Flared Coned Assy - Jaws - (L) Series

EW QC: 4071



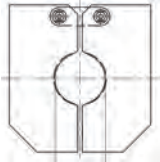
New

8 More Variants available online, or Call Us

Part Number	Tube O/D (mm)	Price
TD-BV10CJ-L/S8	8 x 1.5	175.88
TD-BV10CJ-L/S12	12 x 1.5	175.88

M/C Tool for Std -BV10 Flared Coned Assy - Jaws - (S) Series

EW QC: 4072



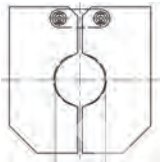
New

5 More Variants available online, or Call Us

Part Number	Tube O/D (mm)	Price
TD-BV10CJ-S38	38 x 3	175.88

M/C Tool Compact -BV10 Flared Coned Assy - Jaws - (L) Series

EW QC: 4071



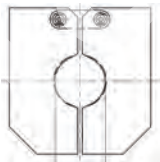
New

8 More Variants available online, or Call Us

Part Number	Tube O/D (mm)	Price
TD-BV10CJ-L/S8	8 x 1.5	175.88
TD-BV10CJ-L/S12	12 x 1.5	175.88

M/C Tool-Compact-BV10 Flared Coned Assy-Jaws-(L) (S) Series

EW QC: 4071



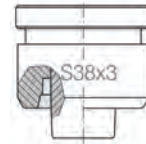
New

6 More Variants available online, or Call Us

Part Number	Tube O/D (mm)	Price
TD-BV10CJ-L/S8	8 x 1.5	175.88
TD-BV10CJ-L/S12	12 x 1.5	175.88
TD-BV10CJ-S38	38 x 3	175.88

Voss Form Forming Head-Steel-(L) or (S) Series - Metric Tube 6x1 to 42x2

EW QC: 4088



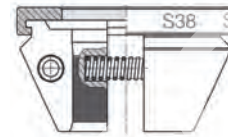
New

31 More Variants available online, or Call Us

Part Number	Tube O/D (mm)	Series	Price
TD-SQRFH-L28X2.5	28 x 2.5	L	527.68

M/C Tool-Voss Form-Jaws-Steel-For Metric Tube 6-38mm-L or S Series

EW QC: 4089



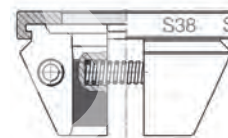
New

15 More Variants available online, or Call Us

Part Number	Tube O/D (mm)	Series	Price
TD-SQRJC-L28	28	L	1232.78

M/C Tool-Voss Form - Jaws - Stainless - For tube 6-42 - L or S Series

EW QC: 4089



New

15 More Variants available online, or Call Us

Part Number	Tube O/D (mm)	Series	Price
TD-SQRJC-L28	28	L	1232.78

23

New MP Filtri Range see Section 23

M/C Tool for Std -BV10 Flared Coned Assy - Stud - (S) Series

EW QC: 4070



New

17 More Variants available online, or Call Us

Part Number	Tube O/D (mm)	Series	Price
TD-BV10PT-S8X1.5-PA	8 x 1.5	S	137.17
TD-BV10PT-S10X2/12X3-PA	10 x 2	S	142.37
TD-BV10PT-S12X2-PA	12 x 2	S	142.37
TD-BV10PT-S16X2.5-PA	16 x 2.5	S	137.17

See our website for all the sizes we stock

Product Bonded Seals

Bonded Seal Kit - Metric

MZ QC: 3819



Full Range Shown Here

Part Number	Description	Price
B5MB01	Bonded Seal Kit - Metric	24.90

Bonded Seal Kit - Imperial

MZ QC: 3820



Full Range Shown Here

Part Number	Description	Price
B5B01	Bonded Seal Kit - Imperial	24.90

Bonded Seal - Metric



SE QC: 3827

▶▶▶ 1 More Variant available online, or Call Us

Part Number	Metric Male	Price
BSM6	M6	0.27
BSM8	M8	0.32
BSM10	M10	0.28
BSM12	M12	0.26
BSM14	M14	0.29
BSM16	M16	0.32
BSM18	M18	0.37
BSM20	M20	0.43
BSM22	M22	0.47

Bonded Seal - Imperial



SA QC: 3828

▶▶▶ Full Range Shown Here

Part Number	BSPP Male	Price
BS02	1/8"	0.16
BS04	1/4"	0.18
BS06	3/8"	0.19
BS08	1/2"	0.27
BS10	5/8"	0.64
BS12	3/4"	0.35
BS16	1"	0.59
BS20	1.1/4"	0.86
BS24	1.1/2"	1.07
BS32	2"	1.76

Bonded Seal - Metric - Stainless Steel - Nitrile



SC QC: 3829

▶▶▶ Full Range Shown Here

Part Number	To Suit to Metric Thread	Price
SSBSM04N	M4	0.54
SSBSM06N	M6	6.23
SSBSM08N	M8	4.79
SSBSM10N	M10	5.01
SSBSM12N	M12	4.63
SSBSM14N	M14	8.04
SSBSM16N	M16	8.15
SSBSM18N	M18	9.16
SSBSM20N	M20	6.23
SSBSM22N	M22	9.48

Bonded Seal - Imperial - Stainless Steel - Nitrile



SC QC: 3830

▶▶▶ 3 More Variants available online, or Call Us

Part Number	To Suit to BSPP Thread	Price
SSBS04N	1/4"	1.02
SSBS06N	3/8"	3.94
SSBS08N	1/2"	1.92
SSBS16N	1"	9.43
SSBS20N	1.1/4"	9.11
SSBS32N	2"	23.32

Bonded Seal - Imperial - Stainless Steel - Viton



SD QC: 3831

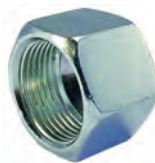
▶▶▶ Full Range Shown Here

Part Number	To Suit to BSPP Thread	Price
SSBS04V	1/4"	2.57
SSBS06V	3/8"	2.12
SSBS08V	1/2"	3.99
SSBS12V	3/4"	9.43
SSBS16V	1"	12.30
SSBS24V	1.1/2"	29.93

▶ O Rings - Please call us

▶ Eaton Walterscheid

Nut for Profile Ring Metric Heavy Duty



FF QC: 1713

▶▶▶ 5 More Variants available online, or Call Us

Part Number	Tube O/D (mm)	Metric Female Thread	Price
M16S	16	M24X1.5	2.68
M20S	20	M30X2.0	3.96
M25S	25	M36X2.0	7.60

WALPro Profile Ring Light/Heavy Duty



FF QC: 1714

▶▶▶ 9 More Variants available online, or Call Us

Part Number	Tube O/D (mm)	Price
P-R10L/S	10	0.70
P-R14S	14	1.47
P-R15L	15	0.96

▶ Stud Fittings

Male Stud Coned Seat BSPP Light Duty



FF QC: 1715

▶▶▶ 3 More Variants available online, or Call Us

Part Number	Tube O/D (mm)	BSPP Male Thread	Price
P-GEV6LRF0A	6	1/8"	3.71
P-GEV6LR1/4FOA	6	1/4"	4.27
P-GEV8LR1/8FOA	8	1/8"	23.00
P-GEV8LRFOA	8	1/4"	5.12
P-GEV8LR3/8FOA	8	3/8"	8.69
P-GEV10LRFOA	10	1/4"	3.77
P-GEV10LR3/8FOA	10	3/8"	12.46
P-GEV10LR1/2FOA	10	1/2"	15.78
P-GEV12LRFOA	12	3/8"	5.69
P-GEV12LR1/2FOA	12	1/2"	7.80
P-GEV15LR3/8FOA	15	3/8"	9.71
P-GEV15LRFOA	15	1/2"	7.89
P-GEV18LRFOA	18	1/2"	10.16
P-GEV18LR3/4FOA	18	3/4"	22.05
P-GEV22LR1/2FOA	22	1/2"	41.71
P-GEV22LRFOA	22	3/4"	16.23

Male Stud Coned Seat BSPP Heavy Duty



DH QC: 1716

▶▶▶ 5 More Variants available online, or Call Us

Part Number	Tube O/D (mm)	BSPP Male Thread	Price
P-GEV10SRFOA	10	3/8"	12.97
P-GEV12SR1/4FOA	12	1/4"	10.99
P-GEV12SR1/2FOA	12	1/2"	11.63
P-GEV16SR3/8FOA	16	3/8"	21.34
P-GEV16SRFOA	16	1/2"	10.93
P-GEV20SR1/2FOA	20	1/2"	26.90
P-GEV20SRFOA	20	3/4"	20.58
P-GEV25SR3/4FOA	25	3/4"	42.69
P-GEV25SRFOA	25	1"	26.71

Male Stud-Form E BSPP Light Duty



DH QC: 1717



▶▶▶ 16 More Variants available online, or Call Us

Part Number	Tube O/D (mm)	BSPP Male Thread	Price
P-GEV15L/R3/8-WD	15	3/8"	15.04

Male Stud-Form E BSPP Heavy Duty



DH QC: 1718



▶▶▶ 13 More Variants available online, or Call Us

Part Number	Tube O/D (mm)	BSPP Male Thread	Price
P-GEV10SR-WD	10	3/8"	6.13
P-GEV12S/R1/2-WD	12	1/2"	13.33
P-GEV20SR-WD	20	3/4"	16.29

Male Stud Swivel Captive Seal BSPP Light Duty



FF QC: 1719



▶▶▶ 5 More Variants available online, or Call Us

Part Number	Tube O/D (mm)	BSPP Male Thread	Price
EGESD12LR-WD	12	3/8"	9.59
EGESD15LR-WD	15	1/2"	12.72
EGESD28LR-WD	28	1"	31.57

Male Stud Swivel Captive Seal BSPP Heavy Duty



FF QC: 1720



▶▶▶ 7 More Variants available online, or Call Us

Part Number	Tube O/D (mm)	BSPP Male Thread	Price
EGESD16SR-WD	16	1/2"	15.85
EGESD20SR-WD	20	3/4"	22.88

Male Stud Form E Metric Light Duty



DH QC: 1721



▶▶▶ 11 More Variants available online, or Call Us

Part Number	Tube O/D (mm)	Metric Male Thread	Price
P-GEV12LM-WD	12	M16X1.5	12.53



Male Stud NPT Light Duty



DH QC: 1723



▶▶▶ 3 More Variants available online, or Call Us

Part Number	Tube O/D (mm)	NPT Male Thread	Price
P-GEV15L/1/2NPT	15	1/2"	15.15

Male Stud NPT Heavy Duty



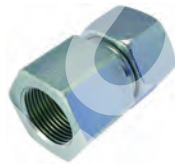
DH QC: 1724



▶▶▶ 8 More Variants available online, or Call Us

Part Number	Tube O/D (mm)	NPT Male Thread	Price
P-GEV10S/1/4NPT	10	1/4"	5.75

Female Stud BSPP Light Duty



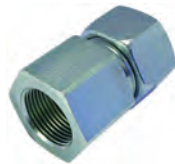
FF QC: 1725



▶▶▶ 8 More Variants available online, or Call Us

Part Number	Tube O/D (mm)	BSPP Female Thread	Price
P-GAV28LR	28	1"	45.37

Female Stud BSPP Heavy Duty



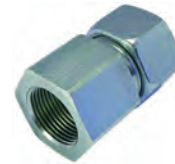
FF QC: 1726



▶▶▶ 7 More Variants available online, or Call Us

Part Number	Tube O/D (mm)	BSPP Female Thread	Price
P-GAV14SR	14	1/2"	24.54

Female Stud Metric Light Duty



DH QC: 1727

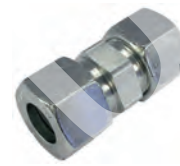


▶▶▶ 4 More Variants available online, or Call Us

Part Number	Tube O/D (mm)	Metric Female Thread	Price
P-GAV6LM	6	M10X1.0	29.01
P-GAV12LM	12	M16X1.5	43.79
P-GAV15LM	15	M18X1.5	45.01



Equal Straight Coupling Light Duty



FF QC: 1729



▶▶▶ Full Range Shown Here

Part Number	Tube O/D (mm)	Price
P-GV6L	6	3.83
P-GV8L	8	4.28
P-GV10L	10	5.05
P-GV12L	12	6.01
P-GV15L	15	8.24
P-GV18L	18	12.52
P-GV22L	22	17.19
P-GV28L	28	30.93

Equal Straight Coupling Heavy Duty



FF QC: 1730



▶▶▶ 5 More Variants available online, or Call Us

Part Number	Tube O/D (mm)	Price
P-GV16S	16	13.80
P-GV20S	20	20.45
P-GV25S	25	34.12

Reducing Fitting Light Duty



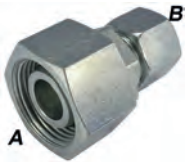
DH QC: 1731



▶▶▶ 12 More Variants available online, or Call Us

Part Number	Tube O/D (mm) (A)	Tube O/D (mm) (B)	Price
P-REDVDN22/18L	22	18	18.21
P-REDVDN28/15L	28	15	29.39

Reducing Fitting Heavy Duty



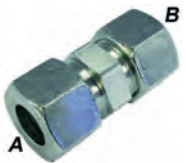
DH QC: 1732



7 More Variants available online, or Call Us

Part Number	Tube O/D (mm) (A)	Tube O/D (mm) (B)	Price
P-REDVDN8/6S	8	6	16.81
P-REDVDN10/8S	10	8	10.80
P-REDVDN14/12S	14	12	27.09
P-REDVDN25/16S	25	16	30.67

Reducing Coupling Light Duty



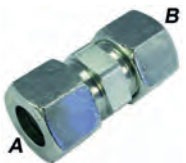
FF QC: 1733



12 More Variants available online, or Call Us

Part Number	Tube O/D (mm) (A)	Tube O/D (mm) (B)	Price
P-GV18/15L	18	15	19.49

Reducing Coupling Heavy Duty



FF QC: 1734



2 More Variants available online, or Call Us

Part Number	Tube O/D (mm) (A)	Tube O/D (mm) (B)	Price
P-GV20/16S	20	16	29.59
P-GV25/16S	25	16	53.42

Bulkhead Coupling Light Duty



FF QC: 1735



6 More Variants available online, or Call Us

Part Number	Tube O/D (mm)	Metric Male Thread	Plate Thickness mm	Price
P-GSV15LM6KTM	15	M22X1.5	4 to 16	17.06
P-GSV22LM6KTM	22	M30X2.0	5 to 16	34.83

Bulkhead Coupling Heavy Duty



FF QC: 1736



7 More Variants available online, or Call Us

Part Number	Tube O/D (mm)	Metric Male Thread	Plate Thickness mm	Price
P-GSV20SM6KTM	20	M30X2.0	5 to 16	42.75

Product Elbows

Male Stud Elbow BSPT Light Duty



FF QC: 1737



8 More Variants available online, or Call Us

Part Number	Tube O/D (mm)	BSPT Male Thread	Price
P-WEV10L/R3/8K	10	3/8"	28.95
P-WEV12LRK	12	3/8"	13.10
P-WEV15L/R3/8K	15	3/8"	44.54

Male Stud Elbow BSPT Heavy Duty



FF QC: 1738



5 More Variants available online, or Call Us

Part Number	Tube O/D (mm)	BSPT Male Thread	Price
P-WEV8SRK	8	1/4"	12.27

Male Stud Elbow Metric Heavy Duty



DH QC: 1740



5 More Variants available online, or Call Us

Part Number	Tube O/D (mm)	Metric Thread	Price
P-WEV16SMK	16	M22 x 1.5	32.78

Equal Elbow Light Duty



FF QC: 1741



2 More Variants available online, or Call Us

Part Number	Tube O/D (mm)	Price
P-WV6L	6	9.33
P-WV10L	10	10.54
P-WV12L	12	12.40
P-WV15L	15	16.74
P-WV22L	22	31.69
P-WV28L	28	50.23

Equal Elbow Heavy Duty



FF QC: 1742



1 More Variant available online, or Call Us

Part Number	Tube O/D (mm)	Price
P-WV6S	6	10.74
P-WV10S	10	13.42
P-WV12S	12	15.02
P-WV14S	14	25.56
P-WV16S	16	23.52
P-WV20S	20	32.65
P-WV25S	25	53.87

Swivel Stud Elbow Light Duty



FF QC: 1743



Full Range Shown Here

Part Number	Tube O/D (mm)	Metric Female Thread	Price
P-EWVD6L	6	M12 X 1.5	11.76
P-EWVD8L	8	M14 X 1.5	11.76
P-EWVD10L	10	M16 X 1.5	12.91
P-EWVD12L	12	M18 X 1.5	20.06
P-EWVD15L	15	M22 X 1.5	18.15
P-EWVD18L	18	M26 X 1.5	25.94
P-EWVD22L	22	M30 X 2	35.53
P-EWVD28L	28	M36 X 2	54.51

Swivel Stud Elbow Heavy Duty



FF QC: 1744



4 More Variants available online, or Call Us

Part Number	Tube O/D (mm)	Metric Female Thread	Price
P-EWVD10S	10	M18 X 1.5	16.93
P-EWVD12S	12	M20 X 1.5	17.57
P-EWVD16S	16	M24 X 1.5	26.90
P-EWVD20S	20	M30 X 2	38.28

Single Banjo Coupling BSPP Light Duty



FF QC: 1745



5 More Variants available online, or Call Us

Part Number	Tube O/D (mm)	BSPP Male Thread	Price
P-RSWV6LR	6	1/8"	18.66
P-RSWV8LR	8	1/4"	20.38
P-RSWV12LR	12	3/8"	26.58

Single Banjo Coupling BSPP Heavy Duty



FF QC: 1746



▶▶▶ 3 More Variants available online, or Call Us

Part Number	Tube O/D (mm)	BSPP Male Thread	Price
P-RSWV6SR	6	1/4"	20.96
P-RSWV10SR	10	3/8"	27.41
P-RSWV12SR	12	3/8"	27.73
P-RSWV20SR	20	3/4"	72.65
P-RSWV25SR	25	1"	112.91



Swivel Stud on Branch Equal Tee Metric Light Duty



FF QC: 1747



▶▶▶ 5 More Variants available online, or Call Us

Part Number	Tube O/D (mm)	Metric Female Thread	Price
P-ETVD6L	6	M12X1.5	18.66
P-ETVD10L	10	M16X1.5	21.28
P-ETVD28L	28	M36X2.0	92.46

Swivel Stud on Branch Equal Tee Metric Heavy Duty



FF QC: 1748



▶▶▶ 5 More Variants available online, or Call Us

Part Number	Tube O/D (mm)	Metric Female Thread	Price
P-ETVD16S	16	M24X1.5	42.37
P-ETVD20S	20	M30X2.0	66.65
P-ETVD25S	25	M36X2.0	99.05

Swivel Stud Equal Run Tee Metric Light Duty



FF QC: 1749



▶▶▶ 4 More Variants available online, or Call Us

Part Number	Tube O/D (mm)	Metric Female Thread	Price
P-ELVD8L	8	M14X1.5	19.36
P-ELVD10L	10	M16X1.5	21.28
P-ELVD12L	12	M18X1.5	25.88
P-ELVD15L	15	M22X1.5	30.80

Swivel Stud Equal Run Tee Metric Heavy Duty



FF QC: 1750



▶▶▶ 4 More Variants available online, or Call Us

Part Number	Tube O/D (mm)	Metric Female Thread	Price
P-ELVD10S	10	M18X1.5	26.97
P-ELVD14S	14	M22X1.5	45.62
P-ELVD16S	16	M24X2.0	45.62
P-ELVD25S	25	M36X2.0	99.81

Equal Tee Light Duty



FF QC: 1751



▶▶▶ 1 More Variant available online, or Call Us

Part Number	Tube O/D (mm)	Price
P-TV6L	6	11.95
P-TV8L	8	12.97
P-TV10L	10	14.38
P-TV12L	12	17.25
P-TV18L	18	30.93
P-TV22L	22	43.84
P-TV28L	28	70.80

Equal Tee Heavy Duty



FF QC: 1752



▶▶▶ 2 More Variants available online, or Call Us

Part Number	Tube O/D (mm)	Price
P-TV6S	6	13.93
P-TV10S	10	17.76
P-TV12S	12	19.36
P-TV14S	14	34.95
P-TV16S	16	32.46
P-TV20S	20	51.06

Reducing Branch Tee Light Duty

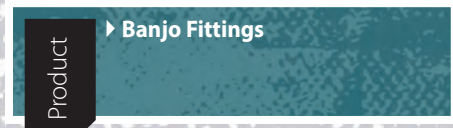


FF QC: 1753



▶▶▶ 7 More Variants available online, or Call Us

Part Number	Tube O/D (mm) (A)	Tube O/D (mm) (B)	Tube O/D (mm) (C)	Price
P-TV18/18/12L	18	18	12	65.05



Double Banjo Coupling BSPP Light Duty



DH QC: 1754



▶▶▶ 5 More Variants available online, or Call Us

Part Number	Tube O/D (mm)	BSPP Male Thread	Price
P-RSTV15LR-WD	15	1/2"	148.43
P-RSTV22LR-WD	22	3/4"	278.03
P-RSTV28LR-WD	28	1"	485.44

Double Banjo Coupling BSPP Heavy Duty



DH QC: 1755



▶▶▶ 3 More Variants available online, or Call Us

Part Number	Tube O/D (mm)	BSPP Male Thread	Price
P-RSTV8SR-WD	8	1/4"	107.25
P-RSTV10SR-WD	10	3/8"	110.51
P-RSTV20SR-WD	20	3/4"	361.01
P-RSTV25SR-WD	25	1"	439.04

Equal Cross-Light Duty



FF QC: 1756



▶▶▶ 7 More Variants available online, or Call Us

Part Number	Tube O/D (mm)	Price
P-KV28L	28	128.21

Equal Cross-Heavy Duty



FF QC: 1757



▶▶▶ 5 More Variants available online, or Call Us

Part Number	Tube O/D (mm)	Price
P-KV12S	12	56.36
P-KV20S	20	139.56
P-KV25S	25	128.05

Blanking Plug Male Metric



FF QC: 1758



▶▶▶ 5 More Variants available online, or Call Us

Part Number	Metric Male Thread	Price
VS-M12X1.5-WD	M12X1.5	4.60
VS-M14X1.5-WD	M14X1.5	4.92
VS-M16X1.5-WD	M16X1.5	5.88
VS-M22X1.5-WD	M22X1.5	7.41
VS-M26X1.5-WD	M26X1.5	11.31

Blanking Plug Male BSPP



FF QC: 1759



▶▶▶ Full Range Shown Here

Part Number	BSPP Male Thread	Price
VS-R1/8-WD	1/8"	2.81
VS-R1/4-WD	1/4"	3.13
VS-R3/8-WD	3/8"	3.58
VS-R1/2-WD	1/2"	4.98
VS-R3/4-WD	3/4"	6.58
VS-R1-WD	1"	12.65
VS-R11/4-WD	1.1/4"	21.34
VS-R11/2-WD	1.1/2"	24.86

Blanking Plug with O Ring Light Duty



FF QC: 1760



▶▶▶ 6 More Variants available online, or Call Us

Part Number	To Suit	Price
VSD12L/SMMB	12	1.73
VSD15LMMB	15	2.24

Blanking Plug with O Ring Heavy Duty



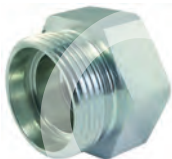
FF QC: 1761



▶▶▶ 4 More Variants available online, or Call Us

Part Number	To Suit	Price
VSD25SMMB	25	6.13

Blanking End-Light Duty



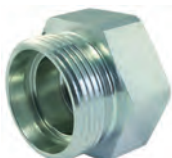
DH QC: 1762



▶▶▶ 6 More Variants available online, or Call Us

Part Number	Tube O/D (mm)	Price
VSK12L	12	7.16
VSK28L	28	38.47

Blanking End-Heavy Duty



DH QC: 1763



▶▶▶ 6 More Variants available online, or Call Us

Part Number	Tube O/D (mm)	Price
VSK10S	10	7.63
VSK20S	20	24.48

Stand Pipe Adaptor-Metric



DH QC: 1764



▶▶▶ 1 More Variant available online, or Call Us

Part Number	BSPP Male Thread	Pipe O/D (mm)	Price
SP06/02	1/8"	6	13.74
SP08/04	1/4"	8	15.68
SP10/04	1/4"	10	21.87
SP12/06	3/8"	12	22.30
SP15/08	1/2"	15	26.52
SP22/12	3/4"	22	57.71
SP28/16	1"	28	89.08

Non Return Valve Tube to BSPP Male Light Duty



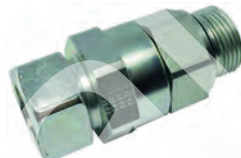
FF QC: 1765



▶▶▶ 5 More Variants available online, or Call Us

Part Number	Tube O/D (mm)	BSPP Male Thread	Price
P-RVV6LR-WD	6	1/8"	26.01
P-RVV18LR-WD	18	1/2"	74.32
P-RVV28LR-WD	28	1"	169.85

Non Return Valve Tube to BSPP Male Heavy Duty



DH QC: 1766



▶▶▶ 6 More Variants available online, or Call Us

Part Number	Tube O/D (mm)	BSPP Male Thread	Price
P-RVV16SR-WD	16	1/2"	79.62
P-RVV25SR-WD	25	1"	142.62

Non Return Valve Tube Light Duty



FF QC: 1767



▶▶▶ 6 More Variants available online, or Call Us

Part Number	Tube O/D (mm)	Price
P-RV10L	10	34.89
P-RV28L	28	166.33

Non Return Valve Tube Heavy Duty



DH QC: 1768



▶▶▶ 5 More Variants available online, or Call Us

Part Number	Tube O/D (mm)	Price
P-RV12S	12	46.71
P-RV20S	20	120.71
P-RV25S	25	148.44

Shuttle Valve Light Duty



DH QC: 1769



▶▶▶ 1 More Variant available online, or Call Us

Part Number	Tube O/D (mm)	Price
P-TWV8L	8	131.41
P-TWV12L	12	207.57



Parker EO Steel Metric M Nut



FD QC: 1770



▶▶▶ 13 More Variants available online, or Call Us

Part Number	Tube O.D	Thread M	Price
M22LCFX	22	M30	2.88
M25SCFX	25	M36	6.12
M28LCFX	28	M36	5.43
M30SCFX	30	M42	7.58
M38SCFX	38	M52	11.18

Parker EO Metric PSR Progressive Ring For L & S Series

FD QC: 1771



►►► 9 More Variants available online, or Call Us

Part Number	Tube O.D	Price
PSR06LX	6	0.45
PSR145X	14	1.18
PSR15LX	15	0.72
PSR165X	16	1.18
PSR18LX	18	1.04
PSR35LX	35	2.32
PSR385X	38	3.18

Parker EO Cap

FD QC: 1772



►►► 12 More Variants available online, or Call Us

Part Number	Tube O.D	Pressure Rating (Bar)	Price
VKA16SCF	16	400	2.66
VKA25SCF	25	400	5.68

Parker EO Plug 24 Flareless

FD QC: 1773



►►► 4 More Variants available online, or Call Us

Part Number	Tube O.D	Pressure Rating (Bar)	Price
ROV06LCF	6	315	4.46
ROV06SCF	6	630	5.23
ROV08LCF	8	315	5.15
ROV10LCF	10	315	5.95
ROV10SCF	10	630	7.23
ROV12LCF	12	315	7.09
ROV14SCF	14	630	15.12
ROV15LCF	15	315	9.94
ROV16SCF	16	400	16.00
ROV20SCF	20	400	23.57
ROV22LCF	22	160	21.04
ROV25SCF	25	400	39.84
ROV28LCF	28	160	38.38
ROV30SCF	30	400	58.29

Parker EO Male Connector 24 deg Flareless/BSPP

FD QC: 1774



►►► 22 More Variants available online, or Call Us

Part Number	Tube O.D	Thread BSPP	Pressure Rating (Bar)	Price
GE06LR1/4CF	6	1/4"	315	3.29
GE06LR1/2CF	6	1/2"	315	12.57
GE06SR1/2CF	6	1/2"	400	21.40
GE08LR1/8CF	8	1/8"	315	4.74
GE08LR1/2CF	8	1/2"	315	8.31
GE08SR3/8CF	8	3/8"	400	8.34
GE10LR3/8CF	10	3/8"	315	4.05
GE10SR1/4CF	10	1/4"	400	6.40
GE10SR1/2CF	10	1/2"	400	6.95
GE12LRCF	12	3/8"	315	4.09
GE12SR1/4CF	12	1/4"	400	8.52
GE14SRCF	14	1/2"	400	10.69
GE15LR3/4CF	15	3/4"	250	14.06
GE16SR3/8CF	16	3/8"	400	17.58
GE20SRCF	20	3/4"	400	15.37
GE22LR1/2CF	22	1/2"	160	17.38
GE25SR3/4CF	25	3/4"	250	33.47
GE25SRCF	25	1"	250	21.77
GE28LRCF	28	1"	160	19.83
GE30SR1CF	30	1"	160	42.78
GE30SRCF	30	1 1/4"	160	33.47
GE38SR11/4CF	38	1 1/4"	160	49.70

Parker EO Male Connector 24 deg Flareless/BSPP Form E

FD QC: 1775



►►► 16 More Variants available online, or Call Us

Part Number	Tube O.D	Thread BSPP	Pressure Rating (Bar)	Price
GE06LR1/4EDCF	6	1/4"	315	4.05
GE06LREDCF	6	1/8"	315	2.91
GE06SREDCF	6	1/4"	630	3.88
GE08LR1/8EDCF	8	1/8"	315	5.26
GE08LREDCF	8	1/4"	315	3.67
GE08SR3/8EDCF	8	3/8"	630	8.55
GE10LR3/8EDCF	10	3/8"	315	4.81
GE10SREDCF	10	3/8"	630	5.23
GE12LR1/2EDCF	12	1/2"	315	7.03
GE12SR1/2EDCF	12	1/2"	630	6.82
GE12SREDCF	12	3/8"	630	5.64
GE14SREDCF	14	1/2"	630	9.45
GE16SR3/8EDCF	16	3/8"	400	18.72
GE18LR3/4EDCF	18	3/4"	160	14.51
GE18LREDCF	18	1/2"	315	8.34
GE20SREDCF	20	3/4"	400	13.37
GE25SR1/2EDCF	25	1/2"	400	51.06
GE30SREDCF	30	1 1/4"	400	35.38
GE38SREDCF	38	1 1/2"	315	44.38

Parker EO Metric NPT Male Connector 24 deg Flareless/NPTF

FD QC: 1776



►►► 10 More Variants available online, or Call Us

Part Number	Tube O.D	Thread NPTF	Pressure Rating (Bar)	Price
GE06S1/4NPTCF	6	1/4"	630	3.88
GE10L1/4NPTCF	10	1/4"	315	3.88
GE10L3/8NPTCF	10	3/8"	315	4.50
GE10S1/4NPTCF	10	1/4"	630	4.95
GE10S3/8NPTCF	10	3/8"	630	5.29
GE12L1/2NPTCF	12	1/2"	315	5.34
GE12L1/4NPTCF	12	1/4"	315	4.46
GE12L3/8NPTCF	12	3/8"	315	4.23
GE12S1/4NPTCF	12	1/4"	630	6.61
GE15L1/2NPTCF	15	1/2"	315	6.23
GE18L1/2NPTCF	18	1/2"	315	8.00
GE20S3/4NPTCF	20	3/4"	400	14.47
GE25S1NPTCF	25	1"	400	24.54
GE28L1NPTCF	28	1"	160	23.09
GE30S11/4NPTCF	30	1 1/4"	400	37.14

Parker EO Metric Bulkhead Union 24 deg Flareless / 24deg Flareless

FD QC: 1777

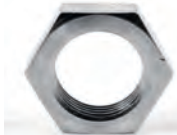


►►► 3 More Variants available online, or Call Us

Part Number	Tube O.D (A)	Tube O.D (B)	Pressure Rating (Bar)	Price
SV06LCF	6	6	315	6.61
SV06SCF	6	6	630	8.86
SV08LCF	8	8	315	6.75
SV08SCF	8	8	630	9.52
SV10SCF	10	10	630	10.97
SV12SCF	12	12	630	14.71
SV15LCF	15	15	315	14.81
SV16SCF	16	16	400	24.16
SV18LCF	18	18	315	23.81
SV20SCF	20	20	400	37.00
SV25SCF	25	25	400	59.50
SV28LCF	28	28	160	46.55
SV30SCF	30	30	400	73.10
SV38SCF	38	38	315	118.17

Parker EO Metric GM Bulkhead Locknut

FD QC: 1778



►►► 6 More Variants available online, or Call Us

Part Number	Use With	Thread M	Price
GM12SCFX	12S	M20	1.46
GM16SCFX	16S	M24	2.84
GM18LCFX	18L	M26	3.63
GM22LCFX	22L/20S	M30	4.57
GM28LCFX	28L/25S	M36	9.38
GM30SCFX	30S	M42	10.63

Connectors

Product

**Parker EO Female Connector 24 deg
Flareless/BSPP**

FD QC: 1779



▶▶▶ 4 More Variants available online, or Call Us

Part Number	Tube O.D	Thread BSPP	Pressure Rating (Bar)	Price
GAI06LRCF	6	1/8"	315	3.88
GAI06SRCF	6	1/4"	400	7.72
GAI08SRCF	8	1/4"	400	7.86
GAI08LR3/8CF	8	3/8"	315	14.57
GAI08LR1/2CF	8	1/2"	315	14.26
GAI10LRCF	10	1/4"	315	4.57
GAI10LR3/8CF	10	3/8"	315	21.84
GAI10SRCF	10	3/8"	400	13.37
GAI12SRCF	12	3/8"	400	10.52
GAI12LR1/2CF	12	1/2"	315	20.60
GAI14SRCF	14	1/2"	400	20.60
GAI15LRCF	15	1/2"	315	7.72
GAI16SRCF	16	1/2"	400	14.78
GAI20SRCF	20	3/4"	315	23.47
GAI22LRCF	22	3/4"	160	15.30
GAI25SRCF	25	1"	315	45.80
GAI28LRCF	28	1"	160	39.01
GAI30SRCF	30	1 1/4"	315	62.30
GAI38SRCF	38	1 1/2"	250	74.18

**Parker EO Female Connector 24 deg
Flareless/Metric**

FD QC: 1780



▶▶▶ 1 More Variant available online, or Call Us

Part Number	Tube O.D	Thread M	Pressure Rating (Bar)	Price
GAI08LMCF	8	M12	315	13.71
GAI10LMCF	10	M14	315	14.51
GAI12LMCF	12	M16	315	18.45
GAI18LMCF	18	M22	315	22.88
GAI22LMCF	22	M26	160	29.32

Parker EO Flareless Swivel Union

FD QC: 1781



▶▶▶ 6 More Variants available online, or Call Us

Part Number	Thread M	Pressure Rating (Bar)	Price
GZ06LCF	M12	315	14.51
GZ08LCF	M14	315	15.30
GZ08SCF	M16	630	18.38
GZ12LCF	M18	315	17.00
GZ14SCF	M22	630	25.75
GZ15LCF	M22	315	19.00
GZ16SCF	M24	400	23.89
GZ20SCF	M30	400	28.04
GZ22LCF	M30	160	23.89
GZ25SCF	M36	400	35.86
GZ28LCF	M36	160	35.89
GZ38SCF	M52	315	59.01

**Parker EO Metric Equal Union 24deg
Flareless / 24 deg Flareless**

FD QC: 1782



▶▶▶ 3 More Variants available online, or Call Us

Part Number	Tube O.D (A)	Tube O.D (B)	Pressure Rating (Bar)	Price
G08LCF	8	8	315	3.74
G08SCF	8	8	630	4.71
G10LCF	10	10	315	4.43
G10SCF	10	10	630	5.71
G12LCF	12	12	315	5.29
G12SCF	12	12	630	6.51
G14SCF	14	14	630	12.15
G15LCF	15	15	315	7.41
G16SCF	16	16	400	12.43
G20SCF	20	20	400	18.35
G22LCF	22	22	160	15.61
G25SCF	25	25	400	30.67
G28LCF	28	28	160	27.45
G30SCF	30	30	400	43.06
G38SCF	38	38	315	57.70

**Parker EO Metric Reducing Union 24 deg
Flareless / 24 deg Flareless**

FD QC: 1783



▶▶▶ 8 More Variants available online, or Call Us

Part Number	Tube O.D (A)	Tube O.D (B)	Pressure Rating (Bar)	Price
GR08/06SCF	8	6	630	10.00
GR10/08LCFX	10	8	315	6.93
GR10/08SCF	10	8	630	12.63
GR12/06LCFX	12	6	315	7.60
GR12/06SCF	12	6	630	12.88
GR12/08LCFX	12	8	315	7.79
GR12/08SCF	12	8	630	12.98
GR12/10LCFX	12	10	315	8.03
GR12/10SCF	12	10	630	13.46
GR14/12SCF	14	12	630	24.23
GR16/12SCF	16	12	400	17.86
GR16/14SCFX	16	14	400	21.89
GR18/10LCFX	18	10	315	15.25
GR20/16SCF	20	16	400	25.96
GR22/12LCFX	22	12	160	22.45
GR22/18LCFX	22	18	160	19.84
GR25/16SCF	25	16	400	46.55
GR25/20SCF	25	20	400	45.97
GR28/18LCFX	28	18	160	37.31
GR30/20SCF	30	20	400	61.78
GR30/25SCF	30	25	400	65.84
GR38/30SCF	38	30	315	92.59

Product ▶ Elbows

**Parker EO Elbow Union 24 deg Flareless /
24 deg Flareless**

FD QC: 1784



▶▶▶ 4 More Variants available online, or Call Us

Part Number	Tube O.D	Pressure Rating (Bar)	Price
W06SCF	6	630	9.21
W08LCF	8	315	8.52
W10LCF	10	315	9.00
W12SCF	12	630	12.91
W14SCF	14	630	22.05
W15LCF	15	315	14.47
W16SCF	16	400	20.52
W18LCF	18	315	19.80
W20SCF	20	400	28.46
W22LCF	22	160	27.41
W25SCF	25	400	47.01
W28LCF	28	160	43.13
W30SCF	30	400	65.66
W38SCF	38	315	93.18

**Parker EO Male Elbow 24 deg Flareless/
BSPT**

FD QC: 1785



▶▶▶ 3 More Variants available online, or Call Us

Part Number	Tube O.D	Thread BSPT	Pressure Rating (Bar)	Price
WE06SRCF	6	1/4"	400	8.86
WE08SRCF	8	1/4"	400	10.38
WE10SRCF	10	3/8"	400	11.87
WE12LR1/4CF	12	1/4"	315	15.89
WE12LRCF	12	3/8"	315	11.11
WE12SRCF	12	3/8"	400	13.32
WE15LRCF	15	1/2"	315	13.64
WE16SRCF	16	1/2"	400	19.80
WE18LRCF	18	1/2"	315	17.83
WE22LRCF	22	3/4"	160	60.06

**Parker EO Male Elbow 24 deg Flareless/
NPT**

FD QC: 1786



▶▶▶ 2 More Variants available online, or Call Us

Part Number	Tube O.D	Thread NPT	Pressure Rating (Bar)	Price
WE06L1/4NPTCF	6	1/4"	315	12.74
WE06S1/4NPTCF	6	1/4"	630	10.14
WE08L1/4NPTCF	8	1/4"	315	9.41
WE10L1/4NPTCF	10	1/4"	315	10.46
WE10S3/8NPTCF	10	3/8"	630	13.12
WE12L1/4NPTCF	12	1/4"	315	14.64
WE12L3/8NPTCF	12	3/8"	315	12.77
WE12S3/8NPTCF	12	3/8"	630	14.61
WE12L1/2NPTCF	12	1/2"	315	23.78
WE14S1/2NPTCF	14	1/2"	630	25.92
WE15L1/2NPTCF	15	1/2"	315	18.17
WE16S1/2NPTCF	16	1/2"	400	23.71
WE20S3/4NPTCF	20	3/4"	400	34.89
WE22L3/4NPTCF	22	3/4"	160	34.23
WE25S1NPTCF	25	1"	400	56.32
WE28L1NPTCF	28	1"	160	52.27

Parker EO Swivel Nut Elbow 24 deg Flareless/Flareless Metric Female Swivel

FD QC: 1787



▶▶▶ 1 More Variant available online, or Call Us

Part Number	Tube O.D	Thread M	Pressure Rating (Bar)	Price
EW06LCF	6	M12	315	9.83
EW06SCF	6	M14	630	11.32
EW08LCF	8	M14	315	9.80
EW08SCF	8	M16	630	12.43
EW10LCF	10	M16	315	10.87
EW10SCF	10	M18	630	14.23
EW12LCF	12	M18	315	14.54
EW15LCF	15	M22	315	15.40
EW16SCF	16	M24	400	22.81
EW18LCF	18	M26	315	22.05
EW20SCF	20	M30	400	32.43
EW22LCF	22	M30	160	30.15
EW25SCF	25	M36	400	49.43
EW28LCF	28	M36	160	46.41
EW30SCF	30	M42	400	69.71
EW38SCF	38	M52	315	106.08

Parker EO Bulkhead Union Elbow 24 deg Flareless/24 deg Flareless

FD QC: 1788



▶▶▶ 2 More Variants available online, or Call Us

Part Number	Tube O.D	Pressure Rating (Bar)	Price
WSV06LCF	6	315	13.23
WSV06SCF	6	630	15.26
WSV08LCF	8	315	13.71
WSV08SCF	8	630	16.92
WSV10LCF	10	315	15.23
WSV10SCF	10	630	21.15
WSV12LCF	12	315	18.69
WSV15LCF	15	315	22.26
WSV18LCF	18	315	31.71
WSV20SCF	20	400	49.81
WSV22LCF	22	160	50.01
WSV25SCF	25	400	80.96
WSV28LCF	28	160	76.67
WSV30SCF	30	400	112.36
WSV38SCF	38	315	167.28

Parker EO Adjustable Swivel Elbow 24 deg Flareless/BSPP

FD QC: 1789



▶▶▶ Full Range Shown Here

Part Number	Tube O.D	Thread BSPP	Pressure Rating (Bar)	Price
EW06SREDCF	6	1/4"	630	13.98
EW08LREDCF	8	1/4"	315	12.35
EW08SREDCF	8	1/4"	630	15.40
EW10LREDCF	10	1/4"	315	13.43
EW12LREDCF	12	3/8"	315	18.21
EW12SREDCF	12	3/8"	630	18.66
EW15LREDCF	15	1/2"	315	20.04
EW16SREDCF	16	1/2"	400	28.38
EW20SREDCF	20	3/4"	400	40.50
EW22LREDCF	22	3/4"	160	37.10
EW25SREDCF	25	1"	400	63.55

Product ▶ Tees

Parker EO Union Tee 24 deg Flareless

FD QC: 1790



▶▶▶ 2 More Variants available online, or Call Us

Part Number	Tube O.D	Pressure Rating (Bar)	Price
T06LCF	6	315	10.28
T06SCF	6	630	11.94
T08LCF	8	315	11.08
T08SCF	8	630	13.18
T10SCF	10	630	15.26
T12LCF	12	315	14.85
T12SCF	12	630	16.72
T14SCF	14	630	30.60
T16SCF	16	400	28.46
T18LCF	18	315	27.21
T20SCF	20	400	44.66
T22LCF	22	160	38.38
T25SCF	25	400	66.21
T28LCF	28	160	61.02
T30SCF	30	400	87.47
T38SCF	38	315	126.27

Parker EO Tee Reducer 24 deg Flareless

FD QC: 1791



▶▶▶ 3 More Variants available online, or Call Us

Part Number	Tube O.D 1	Tube O.D 2	Tube O.D 3	Pressure Rating (Bar)	Price
TR06/10/06LCF	6	10	6	315	50.43
TR08/06/08LCF	8	6	8	315	20.38
TR08/10/08LCF	8	10	8	315	43.61
TR10/06/10SCF	10	6	10	400	46.76
TR10/10/06LCF	10	10	6	315	34.69
TR10/15/10LCF	10	15	10	315	51.99
TR12/06/12LCF	12	6	12	315	27.58
TR12/08/08LCF	12	8	8	315	37.10
TR12/08/12SCF	12	8	12	400	61.92
TR12/10/10LCF	12	10	12	315	40.67
TR12/10/12LCF	12	10	12	315	27.31
TR12/10/12SCF	12	10	12	400	77.88
TR12/16/12SCF	12	16	12	400	58.84
TR12/18/12LCF	12	18	12	315	73.35
TR15/10/15LCF	15	10	15	315	45.27
TR15/12/12LCF	15	12	12	315	49.70
TR15/12/15LCF	15	12	15	315	40.12
TR18/10/18LCF	18	10	18	315	54.62
TR18/12/18LCF	18	12	18	315	55.73
TR18/15/18LCF	18	15	18	315	57.90
TR20/16/20SCF	20	16	20	400	99.79
TR20/25/20SCF	20	25	20	400	128.87
TR22/10/22LCF	22	10	22	160	104.33
TR22/12/22LCF	22	12	22	160	73.41
TR22/15/15LCF	22	15	15	160	106.54
TR22/15/22LCF	22	15	22	160	72.07
TR22/18/22LCF	22	18	22	160	96.33
TR25/16/25SCF	25	16	25	400	115.85
TR28/10/28LCF	28	10	28	160	160.15
TR28/12/28LCF	28	12	28	160	107.54
TR28/18/28LCF	28	18	28	160	137.10
TR28/22/22LCF	28	22	22	160	161.71
TR28/22/28LCF	28	22	28	160	118.79

Parker EO Swivel Nut Branch Tee 24 deg Flareless Swivel Female

FD QC: 1792

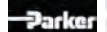


▶▶▶ 6 More Variants available online, or Call Us

Part Number	Tube O.D 1&2	Thread M	Pressure Rating (Bar)	Price
ET06LCF	6	M12	315	15.89
ET06SCF	6	M14	630	18.14
ET12LCF	12	M18	315	19.55
ET14SCF	14	M22	630	54.30
ET16SCF	16	M24	400	36.55
ET18LCF	18	M26	315	34.89
ET20SCF	20	M30	400	57.29
ET22LCF	22	M30	160	53.89
ET25SCF	25	M36	400	85.42
ET28LCF	28	M36	160	79.50
ET30SCF	30	M42	400	108.58
ET38SCF	38	M52	315	172.06

Parker EO Swivel Nut Run Tee 24 deg Flareless Swivel Female

FD QC: 1793



▶▶▶ 3 More Variants available online, or Call Us

Part Number	Tube O.D 1&2	Thread M	Pressure Rating (Bar)	Price
EL06LCF	6	M12	315	16.27
EL06SCF	6	M14	630	18.41
EL08LCF	8	M14	315	16.37
EL08SCF	8	M16	630	18.41
EL10LCF	10	M16	315	18.00
EL12LCF	12	M18	315	20.18
EL12SCF	12	M20	630	25.13
EL14SCF	14	M22	630	38.80
EL15LCF	15	M22	315	26.27
EL18LCF	18	M26	315	35.86
EL20SCF	20	M30	400	56.98
EL22LCF	22	M30	160	52.33
EL25SCF	25	M36	400	86.05
EL30SCF	30	M42	400	110.70
EL38SCF	38	M52	315	177.08

Parker EO Union Cross 24 deg Flareless

FD QC: 1794



▶▶▶ 1 More Variant available online, or Call Us

Part Number	Tube O.D	Pressure Rating (Bar)	Price
K08LCF	8	315	35.30
K08SCF	8	630	41.95
K10LCF	10	315	38.35
K10SCF	10	630	45.17
K12LCF	12	315	42.50
K15LCF	15	315	50.47
K16SCF	16	400	70.16
K18LCF	18	315	65.28
K20SCF	20	315	100.48
K25SCF	25	315	125.02
K28LCF	28	160	125.02

Parker EO High Pressure Banjo Elbow 24 deg Flareless/BSPP



FD QC: 1795



▶▶▶ 5 More Variants available online, or Call Us

Part Number	Tube O.D	Thread BSPP	Pressure Rating (Bar)	Price
WH06LRFC	6	1/8"	250	15.17
WH06SRFC	6	1/4"	315	16.65
WH08LRFC	8	1/4"	250	16.51
WH10LRFC	10	1/4"	250	17.00
WH10SRFC	10	3/8"	315	23.06
WH14SRFC	14	1/2"	315	33.33
WH15LRFC	15	1/2"	250	27.86
WH16SRFC	16	1/2"	315	38.01
WH18LRFC	18	1/2"	250	38.07
WH20SRFC	20	3/4"	160	62.82
WH28LRFC	28	1"	160	95.29

Parker EO Non Return Valve 24 deg Flareless / 24 deg Flareless



FD QC: 1796



▶▶▶ 3 More Variants available online, or Call Us

Part Number	Tube O.D	Pressure Rating (Bar)	Price
RHD06SCF	6	400	29.01
RHD08SCF	8	400	29.91
RHD10LCF	10	250	27.41
RHD12LCF	12	250	34.09
RHD12SCF	12	400	37.52
RHD14SCF	14	400	64.97
RHD15LCF	15	250	45.44
RHD16SCF	16	315	60.44
RHD18LCF	18	160	58.87
RHD20SCF	20	250	96.30
RHD22LCF	22	160	92.01
RHD25SCF	25	250	118.93
RHD28LCF	28	100	131.60
RHD30SCF	30	250	159.25
RHD38SCF	38	250	190.68

Parker EO Non Return Valve 24 deg Flareless/BSPP



FD QC: 1797



▶▶▶ Full Range Shown Here

Part Number	Tube O.D	Thread BSPP	Pressure Rating (Bar)	Price
RHV08LREDCF	8	1/4"	250	22.32
RHV10LREDCF	10	1/4"	250	28.11
RHV12LREDCF	12	3/8"	250	34.51
RHV15LREDCF	15	1/2"	250	43.30
RHV18LREDCF	18	1/2"	160	60.36
RHV22LREDCF	22	3/4"	160	95.56
RHV28LREDCF	28	1"	100	135.93

Parker EO Plug 24 Flareless

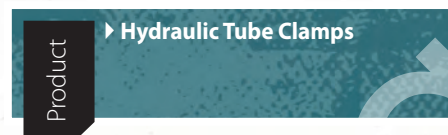


FD QC: 1773



▶▶▶ 4 More Variants available online, or Call Us

Part Number	Price
ROV06LCF	4.46
ROV06SCF	5.23
ROV08LCF	5.15
ROV10LCF	5.95
ROV10SCF	7.23
ROV12LCF	7.09
ROV14SCF	15.12
ROV15LCF	9.94
ROV16SCF	16.00
ROV20SCF	23.57
ROV22LCF	21.04
ROV25SCF	39.84
ROV28LCF	38.38
ROV30SCF	58.29



Single Standard Clamp



FI QC: 1799

▶▶▶ Full Range Shown Here

Part Number	Tube O/D mm	Tube O/D Inch	Group	Price
BSP106PPDPAS	6	1/4"	1	4.85
BSP1A08PPDPAS	8	5/16"	1A	6.36
BSP1A10PPDPAS	10	3/8"	1A	6.18
BSP1A12PPDPAS	12	-	1A	6.36
BSP215PPDPAS	15	-	2	6.55
BSP216PPDPAS	16	5/8"	2	6.55
BSP218PPDPAS	18	-	2	6.55
BSP320PPDPAS	20	-	3	7.64
BSP322PPDPAS	22	7/8"	3	7.56
BSP325PPDPAS	25	1"	3	7.64
BSP428PPDPAS	28	-	4	8.44

Single - Light Duty - Complete



FJ QC: 4547



▶▶▶ Full Range Shown Here

Part Number	Tube O/D (mm)	Group	Price
LDPC6	6	1	2.34
LDPC6.4	6.4	1	2.34
LDPC8	8	1	2.34
LDPC9.5	9.5	1	2.34
LDPC10	10	1	2.34
LDPC12	12	1	2.34
LDPC12.7	12.7	2	2.40
LDPC13.5	13.5	2	2.40
LDPC14	14	2	2.40
LDPC15	15	2	2.40
LDPC16	16	2	2.40
LDPC17.2	17.2	2	2.40
LDPC18	18	2	2.40
LDPC19	19	3	2.82
LDPC20	20	3	2.82
LDPC21.3	21.3	3	2.82
LDPC22	22	3	2.82
LDPC23	23	3	2.82
LDPC25	25	3	2.82
LDPC25.4	25.4	3	2.82
LDPC26.9	26.9	4	3.04
LDPC28	28	4	3.04
LDPC30	30	4	3.04
LDPC32	32	5	3.83
LDPC33.7	33.7	5	3.83
LDPC35	35	5	3.83
LDPC38	38	5	3.83
LDPC40	40	5	3.83
LDPC42	42	5	3.83
LDPC44.5	44.5	6	5.64
LDPC48.3	48.3	6	5.64
LDPC50.8	50.8	6	5.64
LDPC57.2	57.2	7	11.13
LDPC60.3	60.3	7	11.13
LDPC63.5	63.5	7	11.13
LDPC70	70	7	11.13
LDPC73	73	7	11.13
LDPC76.1	76.1	7	11.13

Single - Heavy Duty - Complete



FJ QC: 4548



Full Range Shown Here

Part Number	Tube O/D (mm)	Group	Price
HDPC6	6	1	7.14
HDPC6.4	6.4	1	7.14
HDPC8	8	1	7.14
HDPC9.5	9.5	1	7.14
HDPC10	10	1	7.14
HDPC12	12	1	7.14
HDPC12.7	12.7	1	7.14
HDPC13.5	13.5	1	7.14
HDPC14	14	1	7.14
HDPC15	15	1	7.14
HDPC16	16	1	7.14
HDPC17.2	17.2	1	7.14
HDPC18	18	1	7.14
HDPC19	19	2	7.77
HDPC20	20	2	7.77
HDPC21.3	21.3	2	7.77
HDPC22	22	2	7.77
HDPC25	25	2	7.77
HDPC25.4	25.4	2	7.77
HDPC26.9	26.9	2	7.77
HDPC28	28	2	7.77
HDPC30	30	3	9.43
HDPC32	32	3	9.43
HDPC33.7	33.7	3	9.43
HDPC35	35	3	9.43
HDPC38	38	3	9.43
HDPC40	40	3	9.43
HDPC42	42	3	9.43
HDPC44.5	44.5	4	21.09
HDPC48.3	48.3	4	21.09
HDPC50.8	50.8	4	21.09
HDPC55	55	4	21.09
HDPC57	57	4	21.09
HDPC60.3	60.3	4	21.09
HDPC63	63	4	21.09
HDPC63.5	63.5	4	21.09
HDPC65	65	4	21.09
HDPC70	70	4	21.09

Twin - Light Duty - Complete



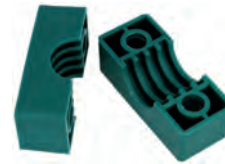
FJ QC: 4549



Full Range Shown Here

Part Number	Tube O/D (mm)	Group	Price
LDT6	6	1	2.18
LDT6.4	6.4	1	2.18
LDT8	8	1	2.18
LDT9.5	9.5	1	2.18
LDT10	10	1	2.18
LDT12	12	1	2.18
LDT12.7	12.7	2	3.30
LDT13.5	13.5	2	3.30
LDT14	14	2	3.30
LDT15	15	2	3.30
LDT16	16	2	3.30
LDT17.2	17.2	2	3.30
LDT18	18	2	3.30
LDT19	19	3	3.57
LDT20	20	3	3.57
LDT21.3	21.3	3	3.57
LDT22	22	3	3.57
LDT23	23	3	3.57
LDT25	25	3	3.57
LDT25.4	25.4	3	3.57
LDT26.9	26.9	4	4.85
LDT28	28	4	4.85
LDT30	30	4	4.85
LDT32	32	5	5.86
LDT33.7	33.7	5	5.86
LDT35	35	5	5.86
LDT38	38	5	5.86
LDT40	40	5	5.86
LDT42	42	5	5.86

Single - Light Duty - Body Only



FJ QC: 4550



Full Range Shown Here

Part Number	Tube O/D (mm)	Group	Price
LDB6	6	1	0.80
LDB6.4	6.4	1	0.80
LDB8	8	1	0.80
LDB9.5	9.5	1	0.80
LDB10	10	1	0.80
LDB12	12	1	0.80
LDB12.7	12.7	2	0.80
LDB13.5	13.5	2	0.80
LDB14	14	2	0.80
LDB15	15	2	0.80
LDB16	16	2	0.80
LDB17.2	17.2	2	0.80
LDB18	18	2	0.80
LDB19	19	3	1.01
LDB20	20	3	1.01
LDB21.3	21.3	3	1.01
LDB22	22	3	1.01
LDB23	23	3	1.01
LDB25	25	3	1.01
LDB25.4	25.4	3	1.01
LDB26.9	26.9	4	1.28
LDB28	28	4	1.28
LDB30	30	4	1.28
LDB32	32	5	1.70
LDB33.7	33.7	5	1.70
LDB35	35	5	1.70
LDB38	38	5	1.70
LDB40	40	5	1.70
LDB42	42	5	1.70
LDB44.5	44.5	6	2.82
LDB48.3	48.3	6	2.82
LDB50.8	50.8	6	2.82
LDB57.2	57.2	7	5.64
LDB60.3	60.3	7	5.64
LDB63.5	63.5	7	5.64
LDB70	70	7	5.64
LDB73	73	7	5.64
LDB76.1	76.1	7	5.64

Single - Light Duty - Weld Plate



FJ QC: 4551



Full Range Shown Here

Part Number	Group	Price
WPXG1	1	0.96
WPXG2	2	0.96
WPXG3	3	1.01
WPXG4	4	1.01
WPXG5	5	1.12
WPXG6	6	1.49
WPXG7	7	2.45

Single - Light Duty - Cover Plate

FJ QC: 4552



Full Range Shown Here

Part Number	Group	Price
CPXG1	1	0.32
CPXG2	2	0.37
CPXG3	3	0.43
CPXG4	4	0.44
CPXG5	5	0.53
CPXG6	6	0.91
CPXG7	7	1.86

Single - Light Duty - Hexagon Bolt

FJ QC: 4553



Full Range Shown Here

Part Number	Group	Price
BOLTG1	1	0.16
BOLTG2	2	0.16
BOLTG3	3	0.16
BOLTG4	4	0.16
BOLTG5	5	0.21
BOLTG6	6	0.27
BOLTG7	7	0.62

Single - Light Duty - Socket Bolt

FJ QC: 4554



Full Range Shown Here

Part Number	Group	Price
SBTG1	1	0.11
SBTG2	2	0.16
SBTG3	3	0.16
SBTG4	4	0.16
SBTG5	5	0.18
SBTG6	6	0.22
SBTG7	7	0.59

Single - Light Duty - Extended Weld Plate

FJ QC: 4555



Full Range Shown Here

Part Number	Group	Price
XWPG1	1	1.12
XWPG2	2	1.17
XWPG3	3	1.17
XWPG4	4	1.17
XWPG5	5	1.38
XWPG6	6	1.81
XWPG7	7	2.93

Single - Light Duty - Safety Plate

FJ QC: 4556



Full Range Shown Here

Part Number	Group	Price
SPLG1	1	0.37
SPLG2	2	0.43
SPLG3	3	0.53
SPLG4	4	0.59
SPLG5	5	0.64
SPLG6	6	0.80
SPLG7	7	1.07

Single - Light Duty - Stacking Bolt

FJ QC: 4557



Full Range Shown Here

Part Number	Group	Price
SBLG1	1	2.00
SBLG2	2	2.13
SBLG3	3	2.36
SBLG4	4	2.53
SBLG5	5	3.02
SBLG6	6	3.78
SBLG7	7	7.24

Single - Heavy Duty - Body Only

FJ QC: 4558



Full Range Shown Here

Part Number	Group	Tube O/D (mm)	Price
HDC6	1	6	2.45
HDC6.4	1	6.4	2.45
HDC8	1	8	2.45
HDC9.5	1	9.5	2.45
HDC10	1	10	2.45
HDC12	1	12	2.45
HDC12.7	1	12.7	2.45
HDC13.5	1	13.5	2.45
HDC14	1	14	2.45
HDC15	1	15	2.45
HDC16	1	16	2.45
HDC17.2	1	17.2	2.45
HDC18	1	18	2.45
HDC19	2	19	2.66
HDC20	2	20	2.66
HDC21.3	2	21.3	2.66
HDC22	2	22	2.66
HDC25	2	25	2.66
HDC25.4	2	25.4	2.66
HDC26.9	2	26.9	2.66
HDC28	2	28	2.66
HDC30	3	30	3.62
HDC32	3	32	3.62
HDC33.7	3	33.7	3.62
HDC35	3	35	3.62
HDC38	3	38	3.62
HDC40	3	40	3.62
HDC42	3	42	3.62
HDC44.5	4	44.5	7.67
HDC48.3	4	48.3	7.67
HDC50.8	4	50.8	7.67
HDC55	4	55	7.67
HDC57	4	57	7.67
HDC60.3	4	60.3	7.67
HDC63.5	4	63.5	7.67
HDC65	4	65	7.67
HDC70	4	70	7.67
HDC88.9	5	88.9	18.48

Single - Heavy Duty - Weld Plate

FJ QC: 4559



Full Range Shown Here

Part Number	Group	Price
HWPG1	1	2.77
HWPG2	2	2.82
HWPG3	3	3.09
HWPG4	4	7.93
HWPG5	5	12.30

Single - Heavy Duty - Cover Plate

FJ QC: 4560



Full Range Shown Here

Part Number	Group	Price
HCPG1	1	1.12
HCPG2	2	1.24
HCPG3	3	1.49
HCPG4	4	3.47
HCPG5	5	5.91

Single - Heavy Duty - Hexagon Bolt

FJ QC: 4561



Full Range Shown Here

Part Number	Group	Price
HDBG1	1	0.44
HDBG2	2	0.53
HDBG3	3	0.59
HDBG4	4	1.12
HDBG5	5	2.77

Single - Heavy Duty - Safety Plate

FJ QC: 4562



Full Range Shown Here

Part Number	Group	Price
HSPG1	1	2.45
HSPG2	2	2.61
HSPG3	3	2.82
HSPG4	4	5.54

Single - Heavy Duty - Stacking Bolt

FJ QC: 4563

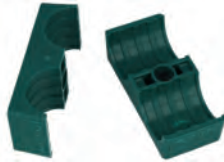


Full Range Shown Here

Part Number	Group	Price
HSPG5	1	3.57
HSPG6	2	3.89
HSPG7	3	4.15
HSPG8	4	9.00

Twin - Heavy Duty - Body Only

FJ QC: 4564

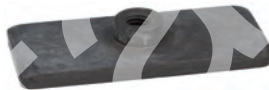


Full Range Shown Here

Part Number	Group	Tube O/D (mm)	Price
TCB6	1	6	0.69
TCB6.4	1	6.4	0.69
TCB8	1	8	0.69
TCB9.5	1	9.5	0.69
TCB10	1	10	0.69
TCB12	1	12	0.69
TCB13.5	2	13.5	0.80
TCB14	2	14	0.80
TCB15	2	15	0.80
TCB16	2	16	0.80
TCB17.2	2	17.2	0.80
TCB18	2	18	0.80
TCB19	3	19	0.91
TCB20	3	20	0.91
TCB21.3	3	21.3	0.91
TCB22	3	22	0.91
TCB23	3	23	0.91
TCB25	3	25	0.91
TCB25.4	3	25.4	0.91
TCB26.9	4	26.9	1.49
TCB28	4	28	1.49
TCB30	4	30	1.49
TCB32	5	32	2.02
TCB33.7	5	33.7	2.02
TCB35	5	35	2.02
TCB38	5	38	2.02
TCB40	5	40	2.02
TCB42	5	42	2.02

Twin - Heavy Duty - Weld Plate

FJ QC: 4565



Full Range Shown Here

Part Number	Group	Price
TWPG1	1	0.85
TWPG2	2	1.54
TWPG3	3	1.54
TWPG4	4	1.92
TWPG5	5	2.13

Twin - Heavy Duty - Cover Plate

FJ QC: 4566



Full Range Shown Here

Part Number	Group	Price
TCPG1	1	0.48
TCPG2	2	0.80
TCPG3	3	0.85
TCPG4	4	1.12
TCPG5	5	1.38

Twin - Heavy Duty - Hexagon Bolt

FJ QC: 4567



Full Range Shown Here

Part Number	Group	Price
TBTG1	1	0.16
TBTG2	2	0.22
TBTG3	3	0.32
TBTG4	4	0.32
TBTG5	5	0.32



Twin - Heavy Duty - Safety Plate

FJ QC: 4568



Full Range Shown Here

Part Number	Group	Price
TSPG1	1	0.43
TSPG2	2	0.43
TSPG3	3	0.48
TSPG4	4	0.48
TSPG5	5	0.64

Twin - Heavy Duty - Stacking Bolt

FJ QC: 4569



Full Range Shown Here

Part Number	Group	Price
TSBG1	1	2.40
TSBG2	2	2.93
TSBG3	3	3.46
TSBG4	4	3.73
TSBG5	5	4.21

Standard Series Rail



FI QC: 4571

New

LMC

Full Range Shown Here

Part Number	Height	Length	Price
BTS11-1	11mm	1 Metre	15.87
BTS11	11mm	2 Metres	28.80

Light Duty - Rail Nuts



FJ QC: 4570

LMC

Full Range Shown Here

Part Number	Metric Female Thread	Price
RNX6	M6	1.86
RNX8	M8	3.60

Heavy Series Rail



FJ QC: 7694

New

LMC

Full Range Shown Here

Part Number	Height	Length	Price
HDS22-1	22mm	1 Metre	79.25
HDS22-2	22mm	2 Metres	158.51

Heavy Series Nuts



FJ QC: 7695

New

LMC

Full Range Shown Here

Part Number	Metric Female Thread	Price
HDRNX10	M10	7.47
HDRNX12	M12	8.15

Hydraulic Tube 3 mts - Bright Drawn



FK QC: 4575

New

Full Range Shown Here

Part Number	Tube O/D (mm)	Max. Working Pressure (bar)	Price
BSTM06X1	6X1	325	14.22
BSTM08X1	8X1	225	16.77
BSTM08X1.5	8X1.5	375	17.41
BSTM10X1.5	10X1.5	275	19.97
BSTM12X1.5	12X1.5	225	22.21
BSTM14X2	14X2	275	31.79
BSTM15X1.5	15X1.5	175	26.04
BSTM16X2	16X2	225	34.51
BSTM16X2.5	16X2.5	300	42.01
BSTM18X2	18X2	200	35.15
BSTM20X3	20X3	275	54.47
BSTM22X2	22X2	150	43.61
BSTM25X3	25X3	225	66.78
BSTM28X2	28X2	125	58.47
BSTM30X3	30X3	175	79.72
BSTM35X3	35X3	150	95.85
BSTM38X5	38X5	250	161.35
BSTM42X3	42X3	125	114.22

Hydraulic Tube 3 mts - Plated - Chrome Free



FK QC: 4576

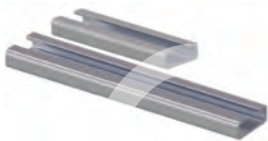
New

Full Range Shown Here

Part Number	Tube O/D (mm)	Max. Working Pressure (bar)	Price
BSTM06X1C	6X1	325	16.29
BSTM08X1C	8X1	225	16.77
BSTM08X1.5C	8X1.5	375	19.81
BSTM10X1.5C	10X1.5	275	22.21
BSTM12X1.5C	12X1.5	225	24.92
BSTM14X2C	14X2	275	33.87
BSTM15X1.5C	15X1.5	175	29.23
BSTM15X2C	15X2	250	38.98
BSTM16X2C	16X2	225	37.38
BSTM18X1.5C	18X1.5	150	34.51
BSTM18X2C	18X2	200	38.50
BSTM20X3C	20X3	275	56.55
BSTM22X2C	22X2	150	47.93
BSTM25X3C	25X3	225	71.09
BSTM28X2C	28X2	125	64.86
BSTM35X3C	35X3	150	102.88
BSTM42X3C	42X3	125	129.24

New range of Twin and Heavy Duty Rails and Nuts

Twin Series Rail



FJ QC: 7692

New

LMC

Full Range Shown Here

Part Number	Height	Length	Price
BTS14	14mm	2 Metres	21.60
BTS14-1	14mm	1 Metre	10.80

Twin Series Nuts



FJ QC: 7693

New

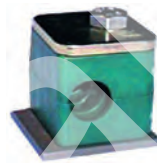
LMC

Full Range Shown Here

Part Number	Metric Female Thread	Price
TSRNX6	M6	1.70
TSRNX8	M8	5.43

Product ▶ Parker Tube Clamps

Tube Clamps Series A Single Bolt Fixing



FD QC: 4572

New

Parker

2 More Variants available online, or Call Us

Part Number	Tube O.D (mm)	Price
RAP3-006	6	3.18
RAP3-012	12	3.18

Product ▶ Hydraulic & Stainless Steel Tubing

Hydraulic Tube 6 mts - Bright Drawn



FK QC: 4577



Full Range Shown Here

Part Number	Tube O/D (mm)	Max. Working Pressure (bar)	Price
BSTM06X1-6	6X1	325	28.44
BSTM08X1-6	8X1	225	33.55
BSTM08X1.5-6	8X1.5	375	34.83
BSTM10X1.5-6	10X1.5	275	39.94
BSTM12X1.5-6	12X1.5	225	44.41
BSTM14X2-6	14X2	275	63.58
BSTM15X1.5-6	15X1.5	175	52.08
BSTM16X2-6	16X2	225	69.01
BSTM16X2.5-6	16X2.5	300	84.03
BSTM18X2-6	18X2	200	70.29
BSTM20X3-6	20X3	275	108.95
BSTM22X2-6	22X2	150	87.22
BSTM25X3-6	25X3	225	133.55
BSTM28X2-6	28X2	125	116.94
BSTM30X3-6	30X3	175	159.43
BSTM35X3-6	35X3	150	191.70
BSTM38X5-6	38X5	250	322.70
BSTM42X3-6	42X3	125	228.44

Stainless Steel Tube Metric 3m Lengths



FL QC: 1902



Full Range Shown Here

Part Number	Tube O/D (mm)	Wall (mm)	Working Pres. (bar)	Price
SSTUBEME06	6	1	423	47.93
SSTUBEME08	8	1	330	59.43
SSTUBEME10	10	1.5	423	75.40
SSTUBEME12	12	1	210	67.41
SSTUBEME12-1.5	12	1.5	283	123.33
SSTUBEME15	15	1.5	283	92.34

Stainless Steel Tube Imperial 3m Lengths



FL QC: 1903



Full Range Shown Here

Part Number	Tube O/D (mm)	Wall (swg)	Working Pres. (bar)	Price
SSTUBEI02	1/8"	20	750	36.26
SSTUBEI04	1/4"	20	350	47.13
SSTUBEI06	3/8"	20	227	68.53
SSTUBEI08	1/2"	20	165	68.53
SSTUBEI12	3/4"	20	99	105.44

Hydraulic Tube 6 mts - Plated - Chrome Free



FK QC: 4578



Full Range Shown Here

Part Number	Tube O/D (mm)	Max. Working Pressure (bar)	Price
BSTM06X1C-6	6X1	325	32.59
BSTM06X1.5C	6	375	18.01
BSTM08X1C-6	8X1	225	33.55
BSTM08X1.5C-6	8X1.5	375	39.62
BSTM10X1.5C-6	10X1.5	275	44.41
BSTM12X1.5C-6	12X1.5	225	49.84
BSTM14X2C-6	14X2	275	67.73
BSTM15X1.5C-6	15X1.5	175	58.47
BSTM15X2C-6	15X2	250	77.96
BSTM16X2C-6	16X2	225	74.76
BSTM16X2.5C-6	16X2.5	150	126.20
BSTM18X2C-6	18X2	200	77.00
BSTM20X3C-6	20X3	275	113.10
BSTM22X2C-6	22X2	150	95.85
BSTM25X3C-6	25X3	225	142.18
BSTM28X2C-6	28X2	125	129.72
BSTM35X3C-6	35X3	150	205.76
BSTM42X3C-6	42X3	125	258.48