

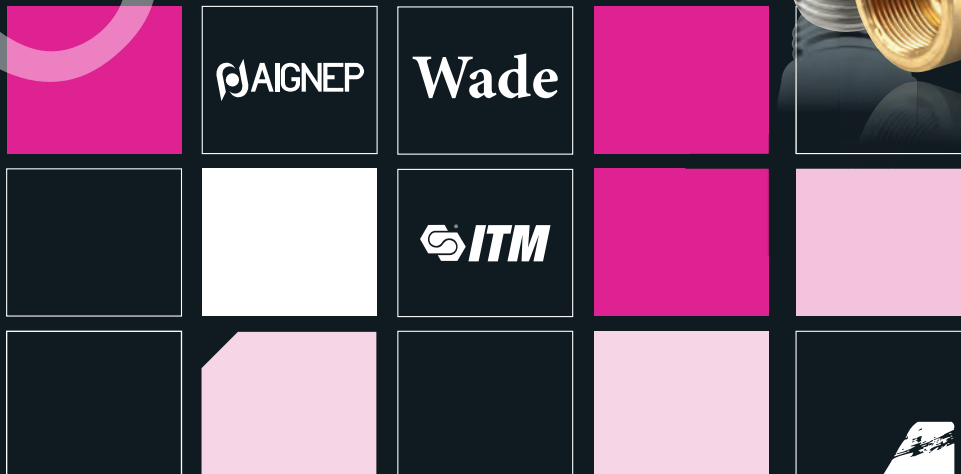
Brass Compression

PRODUCTS

ITM Metric and Imperial Compression	1
Aignep Brass Compression Metric	9
Aignep Nickel Plated Compression Metric	10
Wade Brass Compression Metric	11
Wade Brass Compression Imperial	13
Aignep Quick Fit NP Brass Compression Fittings	15
Copper and Bundy Tube	17



BRANDS



Product

ITM Metric & Imperial

Tubing Nut Metric



AX QC: 1462



>>> Full Range Shown Here

Part Number	Tube OD (mm)	Equivalent	Price
TNM04	4	36050002	0.43
TNM05	5	36050003	0.48
TNM06	6	36050004	0.60
TNM08	8	36050005	0.60
TNM10	10	36050006	0.80
TNM12	12	36050007	1.22
TNM15	15	36050015	1.76
TNM16	16	36050008	1.86
TNM18	18	36050018	2.66
TNM22	22	36050010	3.46
TNM28	28		6.34

Tubing Nut Imperial



AX QC: 1463



>>> Full Range Shown Here

Part Number	Tube O/D	Equivalent	Price
TNI02	1/8"	34027902	0.59
TNI03	3/16"	34027903	0.59
TNI04	1/4"	34027904	0.59
TNI05	5/16"	34027905	0.80
TNI06	3/8"	34027906	0.80
TNI08	1/2"	34027907	1.33
TNI10	5/8"	34027908	2.08
TNI12	3/4"	34027909	2.72

Tubing Sleeve Metric



AX QC: 1464



>>> Full Range Shown Here

Part Number	Tube OD (mm)	Equivalent	Price
OMB04	4	36050202	0.36
OMB05	5	36050203	0.39
OMB06	6	36050204	0.40
OMB08	8	36050205	0.40
OMB10	10	3650206	0.56
OMB12	12	36050207	0.62
OMB15	15	36050215	1.05
OMB16	16	36050208	1.05

Tubing Sleeve Imperial



AU QC: 1465



>>> Full Range Shown Here

Part Number	Tube O/D	Equivalent	Price
OIB02	1/8"	34000302	0.27
OIB03	3/16"	34000303	0.32
OIB04	1/4"	34000304	0.35
OIB05	5/16"	34000305	0.38
OIB06	3/8"	34000306	0.44
OIB08	1/2"	34000307	0.70

Universal Tubing Sleeve Metric



AX QC: 1466



>>> Full Range Shown Here

Part Number	Tube OD (mm)	Equivalent	Price
OM04	4	36050102	0.19
OM05	5	36050103	0.19
OM06	6	36050104	0.22
OM08	8	36050105	0.24
OM10	10	36050106	0.42
OM12	12	36050107	0.48
OM15	15	36050115	0.75
OM16	16	36050108	0.79
OM18	18	36050118	1.33
OM22	22	36050110	1.69
OM28	28		4.30

Universal Tubing Sleeve Imperial



AX QC: 1467



>>> Full Range Shown Here

Part Number	Tube O/D	Equivalent	Price
OI02	1/8"	34027802	0.27
OI03	3/16"	34027803	0.27
OI04	1/4"	34027804	0.30
OI05	5/16"	34027805	0.37
OI06	3/8"	34027806	0.39
OI08	1/2"	34027807	0.60
OI10	5/8"	34027808	1.09
OI12	3/4"	34027809	1.42

Tubing Plug Metric



AU QC: 1468



>>> 1 More Variant available online, or Call Us

Part Number	Tube OD (mm)	Equivalent	Price
CMP04	4	36050902	0.81
CMP05	5	36050903	0.88
CMP06	6	36050904	1.04
CMP08	8	36050905	1.21
CMP10	10	36050906	1.49
CMP12	12	36050907	2.50
CMP15	15	36050915	3.78
CMP18	18	36050918	5.20
CMP22	22	36050910	5.81

Tubing Plug Imperial



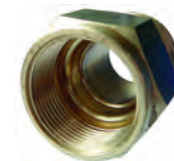
AU QC: 1469



>>> Full Range Shown Here

Part Number	Tube O/D	Equivalent	Price
CIP03	3/16"	34003603	2.06
CIP04	1/4"	34003604	1.21
CIP05	5/16"	34003605	1.41
CIP06	3/8"	34003606	1.54
CIP08	1/2"	34003607	2.96
CIP10	5/8"	34003608	4.24
CIP12	3/4"	34003609	5.80

Straight Male Adaptor Metric BSPT



AU QC: 1470



>>> Full Range Shown Here

Part Number	Tube OD (mm)	BSPT Male Thread	Equivalent	Price
CM04/02	4	1/8"	36053002	1.17
CM04/04	4	1/4"	36053008	1.02
CM05/02	5	1/8"	36053003	1.21
CM05/04	5	1/4"	36053009	1.53
CM06/02	6	1/8"	36053004	1.47
CM06/04	6	1/4"	36053010	1.35
CM06/06	6	3/8"	36053018	2.03
CM08/02	8	1/8"	36053005	1.77
CM08/04	8	1/4"	36053011	1.53
CM08/06	8	3/8"	36053019	2.03
CM08/08	8	1/2"	36053028	3.12
CM10/02	10	1/8"	36053006	2.23
CM10/04	10	1/4"	36053012	2.20
CM10/06	10	3/8"	36053020	2.28
CM10/08	10	1/2"	36053029	2.92
CM12/04	12	1/4"	36053013	2.99
CM12/06	12	3/8"	36053021	3.04
CM12/08	12	1/2"	36053030	3.09
CM12/12	12	3/4"	36053044	6.12
CM15/08	15	1/2"	36053057	6.65
CM16/06	16	3/8"	36053022	5.78
CM16/08	16	1/2"	36053031	6.12
CM16/12	16	3/4"	36053045	6.12
CM22/08	22	1/2"		9.73
CM22/12	22	3/4"		10.96

Reducing Connector Imperial



AU QC: 1479



>>> Full Range Shown Here

Part Number	Tube O/D Male	Tube O/D Female	Equivalent	Price
CIMFB04/03	1/4"	3/16"	34035231	2.28
CIMFB05/03	5/16"	3/16"	34035232	2.33
CIMFB05/04	5/16"	1/4"	34035239	2.52
CIMFB06/03	3/8"	3/16"	34035233	2.58
CIMFB06/04	3/8"	1/4"	34035240	2.58
CIMFB06/05	3/8"	5/16"	34035246	2.86
CIMFB08/03	1/2"	3/16"	34035234	3.67
CIMFB08/04	1/2"	1/4"	34035241	3.67
CIMFB08/05	1/2"	5/16"	34035247	3.67
CIMFB08/06	1/2"	3/8"	34035252	4.24
CIMFB10/05	5/8"	5/16"	34035248	4.29
CIMFB10/06	5/8"	3/8"	34035253	4.85
CIMFB10/08	5/8"	1/2"	34035257	6.15
CIMFB12/05	3/4"	5/16"	34035249	6.46
CIMFB12/06	3/4"	3/8"	34035254	6.46
CIMFB12/08	3/4"	1/2"	34035258	6.46

Nipple Adaptor Tube Male to BSP Female Metric



AX QC: 1480



>>> Full Range Shown Here

Part Number	Tube OD Male (mm)	Female BSPP	Equivalent	Price
CMNF04/02	4	1/8"	36055702	1.84
CMNF05/02	5	1/8"	36055703	1.84
CMNF06/02	6	1/8"	36055704	2.37
CMNF06/04	6	1/4"	36055710	3.32
CMNF08/04	8	1/4"	36055711	3.61
CMNF08/06	8	3/8"	36055719	3.66
CMNF10/04	10	1/4"	36055712	3.71
CMNF10/06	10	3/8"	36055720	3.20
CMNF12/06	12	3/8"	36055721	3.49
CMNF12/08	12	1/2"	36055730	4.84

Nipple Adaptor Tube Male to BSP Female Imperial



AX QC: 1481



>>> Full Range Shown Here

Part Number	Tube O/D Male	Female BSPP	Equivalent	Price
CINF03/02	3/16"	1/8"	34035108	2.50
CINF04/02	1/4"	1/8"	34035109	2.50
CINF05/04	5/16"	1/4"	34035117	3.33
CINF06/06	3/8"	3/8"	34035126	4.29
CINF08/06	1/2"	3/8"	34035127	4.63
CINF08/08	1/2"	1/2"	34035136	7.03

Inch To Metric Tube Adaptor



AX QC: 1482



>>> Full Range Shown Here

Part Number	Tube OD Male (Inch)	Tube OD Female (mm)	Equivalent	Price
CMFB02/04	1/8"	4	36052602	2.01
CMFB03/04	3/16"	4	36052615	2.09
CMFB03/05	3/16"	5	36052616	2.37
CMFB03/06	3/16"	6	36052617	3.73
CMFB04/04	1/4"	4	36052622	2.28
CMFB04/06	1/4"	6	36052624	2.35
CMFB04/08	1/4"	8	36052625	2.92
CMFB05/08	5/16"	8	36052632	2.89
CMFB06/10	3/8"	10	36052642	3.35
CMFB08/12	1/2"	12	36052652	4.43
CMFB10/16	5/8"	16	36052659	8.52
CMFB12/16	3/4"	16	36052665	9.20
CMFB12/22	3/4"	22	36052667	15.34

Nipple Connector Metric



AX QC: 1483



>>> Full Range Shown Here

Part Number	Tube OD (mm) 1	Tube OD (mm) 2	Equivalent	Price
CMNC04	4	4	36063202	1.69
CMNC05	5	5	36063203	1.96
CMNC06	6	6	36063204	2.62
CMNC08	8	8	36063205	2.96
CMNC10	10	10	36063206	4.24
CMNC12	12	12	36063207	4.80

Nipple Connector Imperial



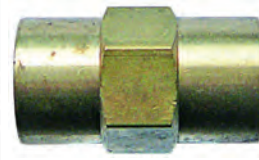
AX QC: 1484



>>> Full Range Shown Here

Part Number	Tube O/D 1	Tube O/D 2	Equivalent	Price
CINC03	3/16"	3/16"	34029103	1.65
CINC04	1/4"	1/4"	34029104	1.65
CINC05	5/16"	5/16"	34029105	2.02
CINC06	3/8"	3/8"	34029106	2.14
CINC08	1/2"	1/2"	34029107	3.53

Straight Connector Metric



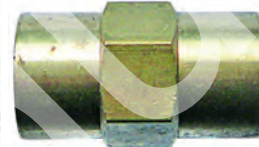
AX QC: 1485



>>> Full Range Shown Here

Part Number	Tube OD (mm) 1	Tube OD (mm) 2	Equivalent	Price
CMS04	4	4	36050302	2.27
CMS05	5	5	36050303	2.14
CMS06	6	6	36050304	2.14
CMS08	8	8	36050305	2.45
CMS10	10	10	36050306	3.00
CMS12	12	12	36050307	4.10
CMS15	15	15	36050315	9.93
CMS16	16	16	36050308	5.76
CMS18	18	18	36050318	8.80
CMS22	22	22	36050310	11.93

Straight Connector Imperial



AX QC: 1486



>>> Full Range Shown Here

Part Number	Tube O/D 1	Tube O/D 2	Equivalent	Price
CIS03	3/16"	3/16"	34000703	3.13
CIS04	1/4"	1/4"	34000704	3.21
CIS05	5/16"	5/16"	34000705	3.56
CIS06	3/8"	3/8"	34000706	5.05
CIS08	1/2"	1/2"	34000707	5.58
CIS10	5/8"	5/8"	34000708	7.12
CIS12	3/4"	3/4"	34000709	8.40

Bulkhead Connector Metric



AU QC: 1487



>>> Full Range Shown Here

Part Number	Tube OD (mm)	Metric Male Thread	Equivalent	Price
CMBH04	4	M12X1	36050802	2.88
CMBH05	5	M15X1	36050803	3.12
CMBH06	6	M15X1	36050804	3.49
CMBH08	8	M18X1.5	36050805	3.66
CMBH10	10	M20X1.5	36050806	5.54
CMBH12	12	M24X1.5	36050807	8.18
CMBH16	16	M30X1.5	36050808	12.91



Non Catalogue Items
we can source from all
major manufacturers

Bulkhead Connector Imperial



AU QC: 1488



Full Range Shown Here

Part Number	Tube O/D	BSPP Male Thread	Equivalent	Price
CIBH03	3/16"	1/4"	34002103	3.25
CIBH04	1/4"	3/8"	34002104	4.31
CIBH05	5/16"	3/8"	34002105	3.66
CIBH06	3/8"	1/2"	34002106	5.03
CIBH08	1/2"	3/4"	34002107	6.99
CIBH10	5/8"	7/8"	34002108	9.25
CIBH12	3/4"	1"	34002109	12.76

Locknut Metric



DC QC: 1412



2 More Variants available online, or Call Us

Part Number	Metric Female	Equivalent	Price
LNM10	M10x1.0	-	0.96
LNM12	M12x1.0	36052001	0.96
LNM14	M14x1.0	-	2.41
LNM15	M15x1.0	36052003	1.35
LNM16	M16x1.5	-	1.35
LNM18	M18x1.5	36052005	1.59
LNM20	M20x1.5	36052006	1.59
LNM22	M22x1.5	-	2.60
LNM24	M24x1.5	36052007	2.60
LNM26	M26x1.5	-	2.60
LNM28	M28x1.5	-	3.43
LNM30	M30x1.5	36052008	4.47
LNM38	M38x1.5	-	6.26
LNM42	M42x1.5	-	11.18

Locknut NP Metric



EC QC: 1413



5 More Variants available online, or Call Us

Part Number	Metric Female	Price
LNM12NP	M12x1.0	1.10
LNM15NP	M15x1.0	1.58
LNM20NP	M20x1.5	1.83
LNM26NP	M26x1.5	2.98
LNM28NP	M28x1.5	3.94

Locknut BSPP



AU QC: 1410



Full Range Shown Here

Part Number	BSPP Female	Equivalent	Price
LN02	1/8"	34022301	0.77
LN04	1/4"	34022302	0.96
LN06	3/8"	34022303	1.13
LN08	1/2"	34022304	1.41
LN10	5/8"	-	2.17
LN12	3/4"	34022306	3.59
LN14	7/8"	34022307	3.96
LN16	1"	34022308	4.22
LN20	1.1/4"	-	9.19
LN24	1.1/2"	-	17.10
LN32	2"	-	21.39

Locknut NP BSPP



DY QC: 1411



2 More Variants available online, or Call Us

Part Number	BSPP Female	Price
LN02NP	1/8"	0.88
LN04NP	1/4"	1.10
LN06NP	3/8"	1.29
LN08NP	1/2"	1.61
LN12NP	3/4"	4.14
LN14NP	7/8"	4.55
LN16NP	1"	4.86

Male Elbow Adaptor Metric



AX QC: 1493



Full Range Shown Here

Part Number	Tube O/D	BSPT Male Thread	Equivalent	Price
CMLM04/02	4	1/8"	36000502	7.16
CMLM04/04	4	1/4"	36000508	7.41
CMLM05/02	5	1/8"	36000503	7.30
CMLM05/04	5	1/4"	36000509	6.62
CMLM06/02	6	1/8"	36000504	6.55
CMLM06/04	6	1/4"	36000510	6.55
CMLM06/06	6	3/8"	36000518	7.73
CMLM08/02	8	1/8"	36000505	6.91
CMLM08/04	8	1/4"	36000511	6.77
CMLM08/06	8	3/8"	36000519	7.73
CMLM08/08	8	1/2"	36000528	16.06
CMLM10/04	10	1/4"	36000512	8.65
CMLM10/06	10	3/8"	36000520	9.82
CMLM10/08	10	1/2"	36000529	16.06
CMLM12/04	12	1/4"	36000513	16.06
CMLM12/06	12	3/8"	36000521	16.06
CMLM12/08	12	1/2"	36000530	18.68
CMLM16/06	16	3/8"	36000522	18.96
CMLM16/08	16	1/2"	36000531	22.66
CMLM16/12	16	3/4"	36000545	22.66

Male Elbow Adaptor Imperial



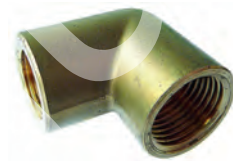
AX QC: 1494



2 More Variants available online, or Call Us

Part Number	Tube O/D	BSPT Male Thread	Equivalent	Price
CILM03/02	3/16"	1/8"	34033008	10.95
CILM03/04	3/16"	1/4"	34033015	12.06
CILM04/02	1/4"	1/8"	34033009	10.79
CILM04/04	1/4"	1/4"	34033016	10.79
CILM05/02	5/16"	1/8"	34033010	11.43
CILM05/04	5/16"	1/4"	34033017	11.24
CILM06/04	3/8"	1/4"	34033018	12.75
CILM06/06	3/8"	3/8"	34033026	12.75
CILM08/06	1/2"	3/8"	34033027	26.16
CILM08/08	1/2"	1/2"	34033036	26.55
CILM10/08	5/8"	1/2"	34033037	37.40
CILM12/12	3/4"	3/4"	34033055	46.62

Female Elbow Adaptor Metric



AX QC: 1495



2 More Variants available online, or Call Us

Part Number	Tube O/D	BSPP Female Thread	Equivalent	Price
CMLF04/02	4	1/8"	36055502	5.93
CMLF06/04	6	1/4"	36055510	8.25
CMLF08/04	8	1/4"	36055511	8.22
CMLF10/04	10	1/4"	36055512	8.22
CMLF10/06	10	3/8"	36055520	10.76
CMLF12/06	12	3/8"	36055521	13.08

Female Elbow Adaptor Imperial



AX QC: 1496



1 More Variant available online, or Call Us

Part Number	Tube O/D	BSPP Female Thread	Equivalent	Price
CILF03/02	3/16"	1/8"	34032808	18.69
CILF04/02	1/4"	1/8"	34032809	12.46
CILF04/04	1/4"	1/4"	34032816	13.62
CILF05/02	5/16"	1/8"	34032810	13.91
CILF05/04	5/16"	1/4"	34032817	14.97
CILF05/06	5/16"	3/8"	34032825	19.12
CILF06/04	3/8"	1/4"	34032818	14.97
CILF06/06	3/8"	3/8"	34032826	17.85
CILF08/04	1/2"	1/4"	34032819	15.83
CILF08/06	1/2"	3/8"	34032827	28.02
CILF08/08	1/2"	1/2"	34032836	32.49

Elbow Connector Metric



EQ QC: 1497



>>> Full Range Shown Here

Part Number	Tube O/D	Equivalent	Price
CML04	4	36051102	7.39
CML05	5	36051103	8.17
CML06	6	36051104	7.90
CML08	8	36051105	8.65
CML10	10	36051106	9.81
CML12	12	36051107	13.15
CML15	15	36051115	17.70
CML16	16	36051108	20.32

Elbow Connector Imperial



ER QC: 1498



>>> 1 More Variant available online, or Call Us

Part Number	Tube O/D	Equivalent	Price
CIL04	1/4"	34006004	13.07
CIL05	5/16"	34006005	14.28
CIL06	3/8"	34006006	16.19
CIL08	1/2"	34006007	22.00
CIL10	5/8"	34006008	33.41
CIL12	3/4"	34006009	37.24

Bracketed Elbow Metric



DB QC: 1499



>>> 1 More Variant available online, or Call Us

Part Number	Tube O/D	Equivalent	Price
CMBL04	4	36054802	11.45
CMBL06	6	36054804	14.93
CMBL08	8	36054805	14.93
CMBL10	10	36054806	25.27
CMBL12	12	36054807	28.53

Bracketed Elbow Imperial



DB QC: 1500



>>> 2 More Variants available online, or Call Us

Part Number	Tube O/D	Equivalent	Price
CIBL03	3/16"	34006403	34.57
CIBL06	3/8"	34006406	23.45
CIBL08	1/2"	34006407	47.05

Stem Elbow Connector Metric



ER QC: 1501



>>> Full Range Shown Here

Part Number	Tube O/D	Stem O/D	Equivalent	Price
CMLS05	5	5	36055103	9.49
CMLS06	6	6	36055104	9.54
CMLS08	8	8	36055105	9.49
CMLS10	10	10	36055106	10.62
CMLS12	12	12	36055107	13.86
CMLS16	16	16	36055108	31.16

Stem Elbow Connector Imperial



ER QC: 1502



>>> 1 More Variant available online, or Call Us

Part Number	Tube O/D	Stem O/D	Equivalent	Price
CILS04	1/4"	1/4"	34005704	15.67
CILS05	5/16"	5/16"	34005705	15.99
CILS06	3/8"	3/8"	34005706	17.59
CILS08	1/2"	1/2"	34005707	23.20
CILS10	5/8"	5/8"	34005708	51.59
CILS12	3/4"	3/4"	34005709	60.64

Universal Stem Elbow Imperial



DB QC: 1503



>>> 1 More Variant available online, or Call Us

Part Number	Stem O/D	Equivalent	Price
CIUSL05	5/16"	34029205	23.64
CIUSL06	3/8"	34029206	28.83
CIUSL08	1/2"	34029207	35.35

Male Tee Adaptor Metric



DB QC: 1504



>>> 1 More Variant available online, or Call Us

Part Number	Tube O/D	BSPT Male Thread	Equivalent	Price
CMTM04/02	4	1/8"	36062702	19.14
CMTM06/02	6	1/8"	36062704	12.13
CMTM08/04	8	1/4"	36062711	14.57
CMTM10/04	10	1/4"	36062712	16.06
CMTM12/06	12	3/8"	36062721	27.82

Male Tee Adaptor Imperial



DB QC: 1505



>>> Full Range Shown Here

Part Number	Tube O/D	BSPT Male Thread	Equivalent	Price
CITM03/02	3/16"	1/8"	34033408	19.98
CITM04/02	1/4"	1/8"	34033409	19.98
CITM05/04	5/16"	1/4"	34033417	24.10
CITM06/04	3/8"	1/4"	34033418	24.10
CITM08/06	1/2"	3/8"	34033427	45.92
CITM10/08	5/8"	1/2"	34033436	45.55

Male Run Tee Adaptor Metric



ES QC: 1506



>>> 1 More Variant available online, or Call Us

Part Number	Tube O/D	BSPT Male Thread	Equivalent	Price
CMTR04/02	4	1/8"	36062802	17.40
CMTR06/02	6	1/8"	36062804	12.09
CMTR08/04	8	1/4"	36062811	14.57
CMTR10/04	10	1/4"	36062812	14.57
CMTR12/06	12	3/8"	36062821	25.30



Imperial and
Metric sizes

Male Run Tee Adaptor Imperial



DB QC: 1507



▶▶▶ 2 More Variants available online, or Call Us

Part Number	Tube O/D	BSPT Male Thread	Equivalent	Price
CITR05/04	5/16"	1/4"	34033617	24.10
CITR06/04	3/8"	1/4"	34033618	24.10

Tee Connector Metric



DB QC: 1508



▶▶▶ Full Range Shown Here

Part Number	Tube O/D	Equivalent	Price
CMT04	4	36051402	8.62
CMT05	5	36051403	9.49
CMT06	6	36051404	8.52
CMT08	8	36051405	9.43
CMT10	10	36051406	11.96
CMT12	12	36051407	17.01
CMT15	15	36051415	21.32
CMT16	16	36051408	24.41

Tee Connector Imperial



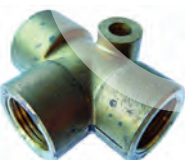
DB QC: 1509



▶▶▶ Full Range Shown Here

Part Number	Tube O/D	Equivalent	Price
CIT03	3/16"	34029003	14.24
CIT04	1/4"	34029004	14.24
CIT05	5/16"	34029005	15.79
CIT06	3/8"	34029006	19.68
CIT08	1/2"	34029007	28.08
CIT10	5/8"	34029008	40.33
CIT12	3/4"	34029009	51.60

Bracketed Tee Metric



DB QC: 1510



▶▶▶ 1 More Variant available online, or Call Us

Part Number	Tube O/D	Equivalent	Price
CMBT04	4	36054902	12.02
CMBT05	5	36054903	12.02
CMBT06	6	36054904	16.50
CMBT08	8	36054905	18.11
CMBT10	10	36054906	29.39

Bracketed Tee Imperial



DB QC: 1511



▶▶▶ Full Range Shown Here

Part Number	Tube O/D	Equivalent	Price
CIBT03	3/16"	34029303	29.92
CIBT04	1/4"	34029304	27.19
CIBT05	5/16"	34029305	29.92
CIBT06	3/8"	34029306	48.48
CIBT08	1/2"	34029307	50.46

Stem Tee Connector Metric



ER QC: 1512



▶▶▶ 1 More Variant available online, or Call Us

Part Number	Tube O/D	Stem O/D	Equivalent	Price
CMTS06	6	6	36055004	12.94
CMTS08	8	8	36055005	14.47
CMTS10	10	10	36055006	16.64
CMTS12	12	12	36055007	21.56
CMTS16	16	16	36055008	42.36

Stem Tee Connector Imperial



ER QC: 1513



▶▶▶ Full Range Shown Here

Part Number	Tube O/D	Stem O/D	Equivalent	Price
CITS03	3/16"	3/16"	34033903	23.54
CITS04	1/4"	1/4"	34033904	23.54
CITS05	5/16"	5/16"	34033905	23.96
CITS06	3/8"	3/8"	34033906	27.51
CITS08	1/2"	1/2"	34033907	35.52

Stem Run Tee Connector Metric



DB QC: 1514



▶▶▶ 1 More Variant available online, or Call Us

Part Number	Tube O/D	Stem O/D	Equivalent	Price
CMTRS06	6	6	36062604	13.32
CMTRS08	8	8	36062605	14.86
CMTRS10	10	10	36062606	16.64
CMTRS12	12	12	36062607	22.30

Stem Run Tee Connector Imperial



DY QC: 1515



▶▶▶ Full Range Shown Here

Part Number	Tube O/D	Stem O/D	Equivalent	Price
CITRS03	3/16"	3/16"	34034103	33.03
CITRS04	1/4"	1/4"	34034104	22.00
CITRS05	5/16"	5/16"	34034105	24.47
CITRS06	3/8"	3/8"	34034106	21.08
CITRS08	1/2"	1/2"	34034107	28.32

Universal Stem Tee Imperial



DY QC: 1516



▶▶▶ Full Range Shown Here

Part Number	Stem O/D	Equivalent	Price
CIUST03	3/16"	34034203	24.40
CIUST04	1/4"	34034204	24.40
CIUST05	5/16"	34034205	24.40
CIUST06	3/8"	34034206	27.19

Y Connector Metric



DY QC: 1517



▶▶▶ 4 More Variants available online, or Call Us

Part Number	Tube O/D	Equivalent	Price
CMY04	4	36055802	12.75

Y Connector Imperial



DY QC: 1518



▶▶▶ 1 More Variant available online, or Call Us

Part Number	Tube O/D	Equivalent	Price
CIY03	3/16"	34012703	19.07
CIY05	5/16"	34012705	21.40
CIY06	3/8"	34012706	23.12
CIY08	1/2"	34012707	43.95

Four Way Connector Metric

DY QC: 1519



>>> Full Range Shown Here

Part Number	Tube O/D	Equivalent	Price
CMX04	4	36051602	14.02
CMX05	5	36051603	12.22
CMX06	6	36051604	13.28
CMX08	8	36051605	16.59
CMX10	10	36051606	16.59
CMX12	12	36051607	34.02
CMX16	16	36051608	46.89

Four Way Connector Imperial

DY QC: 1520



>>> 2 More Variants available online, or Call Us

Part Number	Tube O/D	Equivalent	Price
CIX06	3/8"	34013106	24.93
CIX08	1/2"	34013107	56.13

Nippled Stem Connector Metric

AU QC: 1521



>>> Full Range Shown Here

Part Number	Tube O/D Male	Stem O/D	Equivalent	Price
CMSPN05/05	5	5	36062503	2.28
CMSPN06/06	6	6	36062504	2.64
CMSPN08/08	8	8	36062505	2.76
CMSPN10/10	10	10	36062506	3.95
CMSPN12/12	12	12	36062507	4.88

Nippled Stem Connector Imperial

AU QC: 1522



>>> Full Range Shown Here

Part Number	Tube O/D Male	Stem O/D	Equivalent	Price
CISPNO3/03	3/16"	3/16"	34001303	4.14
CISPNO4/04	1/4"	1/4"	34001304	2.67
CISPNO5/05	5/16"	5/16"	34001305	3.22
CISPNO6/06	3/8"	3/8"	34001306	3.41
CISPNO8/08	1/2"	1/2"	34001307	5.42
CISPNO10/10	5/8"	5/8"	34001308	6.35
CISPNO12/12	3/4"	3/4"	34001309	8.25

Straight Stem Adaptor Metric

DY QC: 1523



>>> Full Range Shown Here

Part Number	Male Thread BSPT	Stand Pipe (mm)	Equivalent	Price
CMSPO2/05	1/8"	5	36053103	1.90
CMSPO2/06	1/8"	6	36053104	2.02
CMSPO2/08	1/8"	8	36053105	2.02
CMSPO4/06	1/4"	6	36053110	2.14
CMSPO4/08	1/4"	8	36053111	2.14
CMSPO4/10	1/4"	10	36053112	2.23
CMSPO6/10	3/8"	10	36053120	3.62
CMSPO6/12	3/8"	12	36053121	3.99
CMSPO8/12	1/2"	12	-	5.20

Straight Stem Adaptor Imperial

DY QC: 1524



>>> Full Range Shown Here

Part Number	BSPT Male	Stand Pipe	Equivalent	Price
CISPO2/03	1/8"	3/16"	34034308	1.74
CISPO2/04	1/8"	1/4"	-	1.74
CISPO4/04	1/4"	1/4"	-	1.84
CISPO4/05	1/4"	5/16"	34034317	2.47
CISPO4/06	1/4"	3/8"	-	2.69
CISPO6/06	3/8"	3/8"	-	3.70
CISPO6/08	3/8"	1/2"	34034327	3.70
CISPO8/08	1/2"	1/2"	-	5.14

Stem (Stand Pipe) x Hosetail Adaptor Metric

AU QC: 1525



>>> Full Range Shown Here

Part Number	Stand Pipe (mm)	Hosetail	Equivalent	Price
CMSPH04/03	4	3/16"	36052415	1.60
CMSPH05/03	5	3/16"	36052416	1.62
CMSPH06/04	6	1/4"	36052424	1.64
CMSPH08/04	8	1/4"	36052425	1.66
CMSPH10/06	10	3/8"	36052442	2.23
CMSPH12/06	12	3/8"	36052443	2.84
CMSPH16/08	16	1/2"	36052453	3.25

Stem (Stand Pipe) x Hosetail Adaptor Imperial

AU QC: 1526



>>> Full Range Shown Here

Part Number	Stand Pipe	Hosetail	Equivalent	Price
CISPH03/03	3/16"	3/16"	34005603	1.53
CISPH04/04	1/4"	1/4"	34005604	1.53
CISPH05/05	5/16"	5/16"	34005605	2.79
CISPH06/06	3/8"	3/8"	34005606	1.79
CISPH08/08	1/2"	1/2"	34005607	2.67
CISPH12/12	3/4"	3/4"	34005609	4.79

Single Side 4 Output Manifold Metric

DY QC: 1527



>>> Full Range Shown Here

Part Number	Inlet Tube O/D	Outlet Tube O/D	No. of Outlets	Equivalent	Price
CMMB08/04	8	4	4	36030428	34.07
CMMB08/05	8	5	4	36030438	34.76
CMMB12/06	12	6	4	36030449	42.96
CMMB12/08	12	8	4	36030457	46.48
CMMB16/10	16	10	4	36030465	75.10
CMMB16/12	16	12	4	36030471	78.44

Single Side 4 Output Manifold Imperial

DY QC: 1528



>>> Full Range Shown Here

Part Number	Inlet Tube O/D	Outlet Tube O/D	No. of Outlets	Equivalent	Price
CIMB05/03	5/16"	3/16"	4	34030432	26.38
CIMB08/04	1/2"	1/4"	4	34030441	39.91
CIMB08/05	1/2"	5/16"	4	34030447	63.77
CIMB10/06	5/8"	3/8"	4	34030453	63.39
CIMB12/08	3/4"	1/2"	4	34030458	87.80

Connector Block Metric

AX QC: 1529



>>> 1 More Variant available online, or Call Us

Part Number	Tube O/D	Inlets/Outlets	Equivalent	Price
CMCMB04/02	4	2	36020202	44.18
CMCMB05/02	5	2	36020203	44.77
CMCMB06/02	6	2	36020204	45.80
CMCMB10/02	10	2	36020206	49.67
CMCMB12/02	12	2	36020207	51.46

Connector Block Imperial

AX QC: 1530

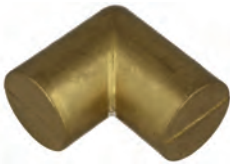


>>> 2 More Variants available online, or Call Us

Part Number	Tube O/D	Inlets/Outlets	Equivalent	Price
CICMB03/02	3/16"	2	34001903	33.44
CICMB03/06	3/16"	6	34001903	46.01
CICMB05/02	5/16"	2	34001905	46.35
CICMB05/06	5/16"	6	34001905	48.73

Brass Blank Elbow Connector-Forged

TC QC: 7069



Full Range Shown Here

Part Number	Diameter (mm)	Length (mm)	Length L1 (mm)	POA	Price
BBS-1	11.10	16.90	17.50	Price on Application	CALL
BBS-2	12.70	19.50	19.50	Price on Application	CALL
BBS-3	14.30	22.60	22.60	Price on Application	CALL
BBS-4	16.00	24.40	24.40	Price on Application	CALL
BBS-5	17.50	25.90	24.40	Price on Application	CALL
BBS-6	20.60	24.40	25.90	Price on Application	CALL
BBS-7	23.90	29.40	30.50	Price on Application	CALL
BBS-8	24.60	30.70	28.00	Price on Application	CALL
BBS-9	28.60	31.00	36.00	Price on Application	CALL
BBS-10	31.80	37.30	32.50	Price on Application	CALL
BBS-11	33.00	35.10	28.70	Price on Application	CALL

Brass Blank Elbow Stepped Connector-Forged

TC QC: 7071

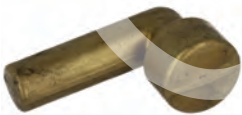


Full Range Shown Here

Part Number	Diameter (mm)	Diameter K (mm)	Length (mm)	POA	Price
BBS-26	11.15	16.00	22.00	Price on Application	CALL
BBS-27	12.80	17.52	23.11	Price on Application	CALL
BBS-28	15.10	20.00	23.00	Price on Application	CALL
BBS-29	17.35	24.00	28.00	Price on Application	CALL
BBS-30	20.84	28.50	31.00	Price on Application	CALL
BBS-31	23.75	31.75	33.00	Price on Application	CALL

Brass Blank Elbow Stepped/Stem Connector-Forged

TC QC: 7072



Full Range Shown Here

Part Number	Diameter 1 (mm)	Diameter 2 (mm)	Length (mm)	POA	Price
BBS-58	12.20	6.30	19.50	Price on Application	CALL
BBS-59	14.30	8.40	21.10	Price on Application	CALL
BBS-60	16.00	9.80	22.60	Price on Application	CALL
BBS-61	17.50	11.30	25.10	Price on Application	CALL
BBS-62	23.10	14.40	28.20	Price on Application	CALL
BBS-63	26.20	20.70	30.70	Price on Application	CALL
BBS-64	30.20	25.50	33.00	Price on Application	CALL

Brass Blank Elbow Stem Connector-Forged

TC QC: 7070



Full Range Shown Here

Part Number	Diameter (mm)	Length(mm)	POA	Price
BBS-45	9.70	32.20	Price on Application	CALL
BBS-46	11.20	33.80	Price on Application	CALL
BBS-47	11.20	35.30	Price on Application	CALL
BBS-48	14.20	43.40	Price on Application	CALL

Brass Blank Tee Connector-Forged

TC QC: 7073



Full Range Shown Here

Part Number	Diameter (mm)	Length (mm)	POA	Price
BBS-13	12.70	19.50	Price on Application	CALL
BBS-14	14.30	19.30	Price on Application	CALL
BBS-15	16.00	23.30	Price on Application	CALL
BBS-16	17.50	23.30	Price on Application	CALL
BBS-17	19.00	25.00	Price on Application	CALL
BBS-18	23.90	27.00	Price on Application	CALL

Brass Blank Tee Stepped Connector-Forged

TC QC: 7075



Full Range Shown Here

Part Number	Diameter (mm)	Length (mm)	POA	Price
BBS-19	10.30	12.50	Price on Application	CALL
BBS-20	16.00	22.60	Price on Application	CALL
BBS-21	17.50	21.30	Price on Application	CALL
BBS-22	20.00	23.00	Price on Application	CALL
BBS-23	24.00	27.40	Price on Application	CALL
BBS-24	28.70	30.00	Price on Application	CALL
BBS-25	31.00	31.80	Price on Application	CALL

Brass Blank Tee Stem Connector-Forged

TC QC: 7074



Full Range Shown Here

Part Number	Diameter (mm)	Length (mm)	POA	Price
BBS-38	6.40	30.70	Price on Application	CALL
BBS-39	9.70	33.80	Price on Application	CALL
BBS-40	12.20	35.30	Price on Application	CALL
BBS-41	14.20	43.40	Price on Application	CALL

Brass Blank Tee Stepped/Bottom Stem Connector-Forged

TC QC: 7076



Full Range Shown Here

Part Number	Diameter K (mm)	Diameter M (mm)	Length (mm)	POA	Price
BBS-49	12.30	9.00	18.00	Price on Application	CALL
BBS-50	14.30	11.40	19.30	Price on Application	CALL
BBS-51	16.00	11.50	22.60	Price on Application	CALL
BBS-52	17.50	11.60	23.40	Price on Application	CALL
BBS-53	23.30	19.00	25.60	Price on Application	CALL
BBS-54	35.00	19.40	29.50	Price on Application	CALL

Brass Blank Tee Stepped/Right Stem Connector-Forged

TC QC: 7077



Full Range Shown Here

Part Number	Diameter K (mm)	Diameter M (mm)	Length (mm)	POA	Price
BBS-65	12.30	11.40	19.50	Price on Application	CALL
BBS-66	14.30	11.30	21.10	Price on Application	CALL
BBS-67	16.00	11.00	20.60	Price on Application	CALL
BBS-68	17.50	15.80	25.10	Price on Application	CALL
BBS-69	23.00	19.30	28.00	Price on Application	CALL
BBS-70	26.20	21.00	30.70	Price on Application	CALL

Brass Blank Cross Connector-Forged



TC QC: 7068



▶▶▶ Full Range Shown Here

Part Number	Diameter (mm)	Length (mm)	POA	Price
BBS-32	14.30	38.00	Price on Application	CALL
BBS-33	17.50	46.00	Price on Application	CALL
BBS-34	24.00	53.00	Price on Application	CALL
BBS-35	30.00	59.00	Price on Application	CALL

Product ▶ Aignep Brass Compression Metric

Stud - Male BSPT



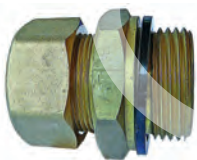
EL QC: 1531



▶▶▶ 1 More Variant available online, or Call Us

Part Number	Tube O/D (mm)	BSPT Male Thread	Price
WCM04/02	4	1/8"	1.49
WCM06/02	6	1/8"	1.66
WCM06/04	6	1/4"	2.09
WCM06/06	6	3/8"	2.60
WCM08/02	8	1/8"	1.92
WCM08/04	8	1/4"	2.13
WCM08/06	8	3/8"	2.77
WCM10/04	10	1/4"	3.02
WCM10/06	10	3/8"	3.32
WCM10/08	10	1/2"	4.30
WCM12/04	12	1/4"	3.66
WCM12/06	12	3/8"	3.66
WCM12/08	12	1/2"	4.35
WCM15/08	15	1/2"	4.94
WCM22/08	22	1/2"	11.29
WCM22/12	22	3/4"	11.54

Stud - Male BSPP



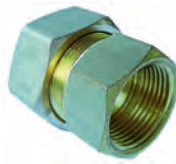
EL QC: 1532



▶▶▶ 1 More Variant available online, or Call Us

Part Number	Tube O/D (mm)	BSPP Male Thread	Price
WCMP06/02	6	1/8"	2.47
WCMP06/04	6	1/4"	2.90
WCMP08/02	8	1/8"	2.77
WCMP08/04	8	1/4"	2.98
WCMP08/06	8	3/8"	4.56
WCMP10/04	10	1/4"	4.64
WCMP10/06	10	3/8"	5.58
WCMP22/12	22	3/4"	16.49
WCMP22/16	22	1"	25.35

Stud - Female BSPP



EL QC: 1533



▶▶▶ 3 More Variants available online, or Call Us

Part Number	Tube O/D (mm)	BSPP Female Thread	Price
WCMF06/02	6	1/8"	2.26
WCMF06/04	6	1/4"	2.39
WCMF08/02	8	1/8"	2.30
WCMF08/04	8	1/4"	2.51
WCMF10/04	10	1/4"	3.32
WCMF10/08	10	1/2"	4.13
WCMF12/04	12	1/4"	4.00
WCMF12/06	12	3/8"	4.13
WCMF12/08	12	1/2"	4.69
WCMF15/08	15	1/2"	5.41
WCMF22/12	22	3/4"	11.76

Straight Connector - Tube



EL QC: 1534



▶▶▶ Full Range Shown Here

Part Number	Tube OD (mm) 1	Tube OD (mm) 2	Price
WCMS04	4	4	2.56
WCMS06	6	6	2.77
WCMS08	8	8	3.02
WCMS10	10	10	4.30
WCMS12	12	12	5.54
WCMS15	15	15	6.82
WCMS22	22	22	17.08

Bulkhead Connector - Tube



EL QC: 1535



▶▶▶ 1 More Variant available online, or Call Us

Part Number	Tube OD (mm) 1	Tube OD (mm) 2	Price
WCMBH06	6	6	5.03
WCMBH08	8	8	5.41
WCMBH10	10	10	7.97
WCMBH12	12	12	10.44

Stud Elbow - Male BSPT



EL QC: 1536



▶▶▶ 3 More Variants available online, or Call Us

Part Number	Tube O/D (mm)	BSPT Male Thread	Price
WCML04/02	4	1/8"	2.13
WCML06/02	6	1/8"	2.43
WCML06/04	6	1/4"	2.30
WCML08/02	8	1/8"	2.51
WCML08/04	8	1/4"	2.51
WCML10/04	10	1/4"	3.49
WCML10/06	10	3/8"	3.58
WCML10/08	10	1/2"	4.30
WCML12/04	12	1/4"	5.07
WCML12/08	12	1/2"	5.37
WCML22/12	22	3/4"	13.25

Can't find what you need? Call us - we can supply millions of parts from 1000s of suppliers

Single Banjo - Tube - Male BSPP



EL QC: 1537



▶▶▶ 2 More Variants available online, or Call Us

Part Number	Tube O/D (mm)	BSPP Male Thread	Price
WCMJ06/02	6	1/8"	6.30
WCMJ08/02	8	1/8"	7.46
WCMJ08/04	8	1/4"	7.46
WCMJ08/06	8	3/8"	11.76
WCMJ10/04	10	1/4"	11.50
WCMJ10/06	10	3/8"	12.06

Equal Elbow - Tube



EL QC: 1538



▶▶▶ 1 More Variant available online, or Call Us

Part Number	Tube O/D (mm)	Price
WCML06	6	3.28
WCML08	8	3.49
WCML10	10	5.41
WCML12	12	6.99
WCML15	15	8.61
WCML22	22	19.60

Tee - Centre Leg - Male BSPT



EL QC: 1539



▶▶▶ 6 More Variants available online, or Call Us

Part Number	Tube O/D (mm)	BSPT Male Thread	Price
WCMT04/02	4	1/8"	3.32
WCMT06/04	6	1/4"	3.71
WCMT08/02	8	1/8"	4.22
WCMT10/06	10	3/8"	6.82
WCMT10/08	10	1/2"	7.20
WCMT12/04	12	1/4"	7.58
WCMT12/06	12	3/8"	7.58
WCMT15/08	15	1/2"	10.56

Equal Tee - Tube



EL QC: 1540



▶▶▶ Full Range Shown Here

Part Number	Tube O/D (mm)	Price
WCMT04	4	3.88
WCMT06	6	4.22
WCMT08	8	4.81
WCMT10	10	7.24
WCMT12	12	9.67
WCMT15	15	12.91
WCMT22	22	27.90

Equal Cross - Tube



EL QC: 1541



▶▶▶ 2 More Variants available online, or Call Us

Part Number	Tube O/D (mm)	Price
WCMX04	4	8.73
WCMX06	6	8.73
WCMX10	10	12.61



We can supply any Aignep product call us with your requirements

Stand Pipe Adaptor - Tube - Male BSPP



EL QC: 1542



▶▶▶ 6 More Variants available online, or Call Us

Part Number	Tube O/D (mm)	BSPP Male Thread	Price
WCMSPO8/04	8	1/4"	2.43

Hosetail Stem Adaptor



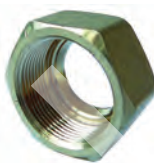
EL QC: 1543



▶▶▶ Full Range Shown Here

Part Number	Tube O/D (mm)	Hosetail (mm)	Price
WCMSH08/06	8	3/8" (10)	2.26
WCMSH10/06	10	3/8" (10)	2.30
WCMSH12/06	12	3/8" (10)	2.34
WCMSH12/08	12	1/2" (13)	3.02

Tube Nut



EL QC: 1544



▶▶▶ 3 More Variants available online, or Call Us

Part Number	Tube O/D (mm)	Price
WTNM06	6	0.55
WTNM10	10	1.11
WTNM12	12	1.45
WTNM15	15	1.62

Brass Olive



EL QC: 1546



▶▶▶ 2 More Variants available online, or Call Us

Part Number	Tube O/D (mm)	Price
WOM04	4	0.26
WOM06	6	0.26
WOM08	8	0.30
WOM10	10	0.38
WOM12	12	0.47

Product ▶ Aignep Nickel Plated Compression Metric

Male Stud BSPT



EL QC: 1548



▶▶▶ 1 More Variant available online, or Call Us

Part Number	Tube O/D (mm)	BSPT Male	Price
94804-1/8	4	1/8"	1.58
94806-1/8	6	1/8"	1.66
94806-1/4	6	1/4"	1.83
94808-1/8	8	1/8"	1.81
94808-1/4	8	1/4"	1.93
948010-1/4	10	1/4"	2.91
948010-3/8	10	3/8"	3.12
948012-3/8	12	3/8"	4.31
948012-1/2	12	1/2"	5.11
948014-1/2	14	1/2"	6.56
948015-1/2	15	1/2"	6.56
948016-1/2	16	1/2"	7.77
948018-1/2	18	1/2"	8.71

Female Stud BSPP



EL QC: 1549



▶▶▶ 1 More Variant available online, or Call Us

Part Number	Tube O/D (mm)	BSPP Female	Price
95004-1/8	4	1/8"	2.10
95006-1/8	6	1/8"	2.15
95006-1/4	6	1/4"	2.43
95008-1/4	8	1/4"	2.50
95008-3/8	8	3/8"	3.06
950010-1/4	10	1/4"	3.96
950010-3/8	10	3/8"	4.41
950012-3/8	12	3/8"	4.81
950012-1/2	12	1/2"	5.39
950014-1/2	14	1/2"	6.89
950015-1/2	15	1/2"	6.89
950016-1/2	16	1/2"	7.66
950018-1/2	18	1/2"	8.71

Straight Connector



EL QC: 1550



▶▶▶ Full Range Shown Here

Part Number	Tube O/D (mm)	Price
94604	4	2.56
94606	6	2.75
94608	8	3.20
946010	10	5.08
946012	12	7.06
946014	14	10.62
946015	15	10.45
946016	16	12.64
946018	18	13.58

Elbow Male Stud BSPT



EL QC: 1551



Full Range Shown Here

Part Number	Tube O/D (mm)	BSPT Male	Price
92804-1/8	4	1/8"	2.04
92806-1/8	6	1/8"	2.15
92806-1/4	6	1/4"	2.31
92808-1/8	8	1/8"	2.62
92808-1/4	8	1/4"	2.68
92808-3/8	8	3/8"	3.17
928010-1/4	10	1/4"	3.96
928010-3/8	10	3/8"	3.98
928012-3/8	12	3/8"	5.41
928012-1/2	12	1/2"	6.06
928014-1/2	14	1/2"	8.23
928015-1/2	15	1/2"	8.39
928016-1/2	16	1/2"	10.00
928018-1/2	18	1/2"	12.89

Tee Male Stud Centre BSPT



EL QC: 1553



Full Range Shown Here

Part Number	Tube O/D (mm)	BSPT Male	Price
92204-1/8	4	1/8"	3.08
92206-1/8	6	1/8"	3.27
92206-1/4	6	1/4"	3.54
92208-1/8	8	1/8"	3.87
92208-1/4	8	1/4"	3.92
92208-3/8	8	3/8"	4.81
922010-1/4	10	1/4"	6.46
922010-3/8	10	3/8"	7.35
922012-3/8	12	3/8"	8.56
922012-1/2	12	1/2"	8.56
922014-1/2	14	1/2"	13.22
922015-1/2	15	1/2"	13.22
922016-1/2	16	1/2"	15.79
922018-1/2	18	1/2"	20.24

Banjo Single Male Stud BSPP



EL QC: 1556



Full Range Shown Here

Part Number	Tube O/D (mm)	BSPP Male	Price
95504-1/8	4	1/8"	4.31
95506-1/8	6	1/8"	4.35
95506-1/4	6	1/4"	5.39
95508-1/8	8	1/8"	5.15
95508-1/4	8	1/4"	5.48
95508-3/8	8	3/8"	8.45
955010-1/4	10	1/4"	8.14
955010-3/8	10	3/8"	9.14
955012-3/8	12	3/8"	13.14

Elbow Connector



EL QC: 1552



Full Range Shown Here

Part Number	Tube O/D (mm)	Price
92604	4	2.77
92606	6	3.00
92608	8	3.54
926010	10	5.66
926012	12	7.54
926014	14	11.64
926015	15	11.64
926016	16	14.41
926018	18	17.39

Tee Male Stud Run BSPT



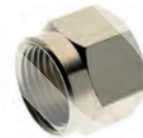
EL QC: 1554



Full Range Shown Here

Part Number	Tube O/D (mm)	BSPT Male	Price
92304-1/8	4	1/8"	3.08
92306-1/8	6	1/8"	3.27
92306-1/4	6	1/4"	3.54
92308-1/8	8	1/8"	3.87
92308-1/4	8	1/4"	3.91
92308-3/8	8	3/8"	4.81
923010-1/4	10	1/4"	6.46
923010-3/8	10	3/8"	6.49
923012-3/8	12	3/8"	8.56
923012-1/2	12	1/2"	8.56
923014-1/2	14	1/2"	13.22
923015-1/2	15	1/2"	13.22
923016-1/2	16	1/2"	15.79
923018-1/2	18	1/2"	20.24

Tube Nut



EL QC: 1557



2 More Variants available online, or Call Us

Part Number	Tube O/D (mm)	Price
96806	6	0.50
968010	10	1.15
968012	12	1.52
968014	14	2.69
968015	15	2.69
968016	16	3.34
968018	18	3.65



Also in stock Aignep quick fit fittings see page 15

Tee Connector



EL QC: 1555



Full Range Shown Here

Part Number	Tube O/D (mm)	Price
92004	4	3.83
92006	6	4.15
92008	8	4.91
920010	10	8.09
920012	12	10.52
920014	14	16.66
920015	15	16.37
920016	16	20.20
920018	18	24.55

Male Stud Coupling BSPT



ET QC: 1559



2 More Variants available online, or Call Us

Part Number	Tube O/D (mm)	BSPT Male Thread	Price
WA-MC104/083	4	1/8"	4.99
WA-MC104/163	4	1/4"	6.33
WA-MC105/083	5	1/8"	8.16
WA-MC106/083	6	1/8"	1.73
WA-MC106/163	6	1/4"	2.48
WA-MC106/243	6	3/8"	5.47
WA-MC108/083	8	1/8"	2.77
WA-MC108/163	8	1/4"	2.48
WA-MC108/243	8	3/8"	3.83
WA-MC110/083	10	1/8"	5.25
WA-MC110/163	10	1/4"	3.59
WA-MC110/243	10	3/8"	3.78
WA-MC110/323	10	1/2"	5.11
WA-MC112/163	12	1/4"	6.24
WA-MC112/243	12	3/8"	5.90
WA-MC112/323	12	1/2"	6.91
WA-MC115/243	15	3/8"	9.96
WA-MC115/323	15	1/2"	10.81
WA-MC116/323	16	1/2"	12.47
WA-MC120/483	20	3/4"	21.48
WA-MC122/483	22	3/4"	23.62



See our website for all the sizes we stock

Male Stud Coupling BSPP



ET QC: 1560

Wade

▶▶▶ 3 More Variants available online, or Call Us

Part Number	Tube O/D (mm)	BSPP Male Thread	Price
WA-MC104/081	4	1/8"	8.50
WA-MC106/161	6	1/4"	2.96
WA-MC106/241	6	3/8"	10.21
WA-MC108/161	8	1/4"	3.22
WA-MC108/241	8	3/8"	5.95
WA-MC110/161	10	1/4"	4.04
WA-MC110/241	10	3/8"	6.69
WA-MC110/321	10	1/2"	8.95
WA-MC112/161	12	1/4"	4.88
WA-MC112/241	12	3/8"	7.59
WA-MC112/321	12	1/2"	7.37
WA-MC115/241	15	3/8"	11.82
WA-MC115/321	15	1/2"	11.12
WA-MC116/321	16	1/2"	11.43
WA-MC118/481	18	3/4"	23.26
WA-MC120/481	20	3/4"	26.53
WA-MC122/481	22	3/4"	19.87
WA-MC125/481	25	3/4"	32.29
WA-MC125/641	25	1"	31.56

Female Stud Coupling BSPP



ET QC: 1561

Wade

▶▶▶ 2 More Variants available online, or Call Us

Part Number	Tube O/D (mm)	BSPP Female Thread	Price
WA-MC106/082	6	1/8"	5.42
WA-MC106/162	6	1/4"	5.17
WA-MC108/162	8	1/4"	5.25
WA-MC108/242	8	3/8"	7.63
WA-MC220/242	10	3/8"	6.77
WA-MC110/322	10	1/2"	9.90
WA-MC112/162	12	1/4"	8.24
WA-MC112/322	12	1/2"	10.30
WA-MC115/242	15	3/8"	9.56
WA-MC115/322	15	1/2"	14.03
WA-MC122/482	22	3/4"	28.96

Female Pressure Gauge BSPP



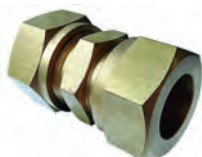
ET QC: 1562

Wade

▶▶▶ 2 More Variants available online, or Call Us

Part Number	Tube O/D (mm)	BSPP Female Thread	Price
WA-MGA106/242	6	3/8"	9.25

Equal Ended Coupling



ET QC: 1563

Wade

▶▶▶ Full Range Shown Here

Part Number	Tube O/D (mm)	Price
WA-MC104	4	5.78
WA-MC105	5	7.99
WA-MC106	6	3.13
WA-MC108	8	3.73
WA-MC110	10	4.88
WA-MC112	12	6.74
WA-MC115	15	13.24
WA-MC116	16	16.40
WA-MC120	20	58.09
WA-MC122	22	36.33

Reducing Coupling



ET QC: 1564

Wade

▶▶▶ 1 More Variant available online, or Call Us

Part Number	Tube OD (mm) 1	Tube OD (mm) 2	Price
WA-MC106/104	6	4	6.98
WA-MC108/105	8	5	9.12
WA-MC108/106	8	6	6.29
WA-MC110/106	10	6	6.50
WA-MC110/108	10	8	5.13
WA-MC112/108	12	8	12.45

Bulkhead Coupling



ET QC: 1565

Wade

▶▶▶ Full Range Shown Here

Part Number	Tube O/D (mm)	Max B/H Plate Thickness	Price
WA-MB106/L10	6	10	4.72
WA-MB108/L10	8	10	5.13
WA-MB110/L10	10	10	7.73
WA-MB112/L10	12	10	15.75
WA-MB115/L10	15	10	18.01
WA-MB122/L12	22	12	41.99

Male Stud Elbow BSPT



ET QC: 1566

Wade

▶▶▶ 6 More Variants available online, or Call Us

Part Number	Tube O/D (mm)	BSPT Male Thread	Price
WA-ME104/083	4	1/8"	4.96
WA-ME104/163	4	1/4"	10.42
WA-ME106/083	6	1/8"	4.80
WA-ME106/163	6	1/4"	4.80
WA-ME108/083	8	1/8"	5.34
WA-ME108/163	8	1/4"	5.34
WA-ME108/243	8	3/8"	5.90
WA-ME110/163	10	1/4"	7.00
WA-ME110/243	10	3/8"	7.34
WA-ME112/163	12	1/4"	10.16
WA-ME115/323	15	1/2"	15.44
WA-ME122/483	22	3/4"	31.44
WA-ME125/483	25	3/4"	33.61

Male Stud Elbow BSPP



ET QC: 1567

Wade

▶▶▶ 1 More Variant available online, or Call Us

Part Number	Tube O/D (mm)	BSPP Male Thread	Price
WA-ME106/081	6	1/8"	10.93
WA-ME110/161	10	1/4"	10.45
WA-ME110/241	10	3/8"	15.44

Single Banjo Coupling BSPP



ET QC: 1568

Wade

▶▶▶ 1 More Variant available online, or Call Us

Part Number	Tube O/D (mm)	BSPP Male Thread	Price
WA-MJ108/081	8	1/8"	17.62
WA-MJ108/161	8	1/4"	17.62

Female Stud Elbow BSPP



ET QC: 1569

Wade

▶▶▶ 4 More Variants available online, or Call Us

Part Number	Tube O/D (mm)	BSPP Female Thread	Price
WA-ME112/322	12	1/2"	21.48

Equal Elbow



ET QC: 1570

Wade

▶▶▶ 3 More Variants available online, or Call Us

Part Number	Tube O/D (mm)	Price
WA-ME108	8	4.88
WA-ME110	10	7.17
WA-ME112	12	10.30
WA-ME115	15	16.68
WA-ME116	16	19.07
WA-ME122	22	40.38

Test Point Elbow



ET QC: 1571

Wade

▶▶▶ 1 More Variant available online, or Call Us

Part Number	Tube O/D (mm)	Price
WA-MTP1206E	6	15.24

Male Branch Tee BSPT



ET QC: 1572

Wade

▶▶▶ 3 More Variants available online, or Call Us

Part Number	Tube O/D (mm)	BSPT Male Thread	Price
WA-MT108/163	8	1/4"	11.94



We can supply any Wade products call us with your requirements

Equal Tee



ET QC: 1574

Wade

▶▶▶ 3 More Variants available online, or Call Us

Part Number	Tube O/D (mm)	Price
WA-MT106	6	6.81
WA-MT108	8	6.83
WA-MT110	10	11.72
WA-MT112	12	16.62
WA-MT115	15	25.76
WA-MT116	16	37.99
WA-MT122	22	75.30

Compression Nut



ET QC: 1575

Wade

▶▶▶ 5 More Variants available online, or Call Us

Part Number	Tube O/D (mm)	Price
WA-WMUN110	10	1.64

Compression Ring



ET QC: 1576

Wade

▶▶▶ 5 More Variants available online, or Call Us

Part Number	Tube O/D in MM	Price
WA-MR212	12	2.68

N Ferrule Medium Duty



ET QC: 1579

Wade

▶▶▶ 1 More Variant available online, or Call Us

Part Number	Tube O/D (mm)	Tube I/D (mm)	Price
WA-MNF806	6	4	0.51
WA-MNF808	8	5.5	0.62
WA-MNF812	12	8.5	1.33

Product

▶ Wade Brass Compression Imperial

Male Stud Coupling BSPT



ET QC: 1580

Wade

▶▶▶ 4 More Variants available online, or Call Us

Part Number	Tube O/D	BSPT Male Thread	Price
WA-7060	1/8"	1/8"	3.98
WA-7061	3/16"	1/8"	2.77
WA-7063/1	1/4"	1/8"	2.88
WA-7060/3	1/8"	1/4"	5.87
WA-7061/3	3/16"	1/4"	7.42
WA-7063	1/4"	1/4"	6.26
WA-7068/3	3/8"	1/4"	4.48
WA-7065	5/16"	1/4"	5.73
WA-7071/3	1/2"	1/4"	8.98
WA-7063/8	1/4"	3/8"	4.57
WA-7068	3/8"	3/8"	4.82
WA-7071/8	1/2"	3/8"	8.98
WA-7063/11	1/4"	1/2"	8.02
WA-7068/11	3/8"	1/2"	10.69
WA-7071	1/2"	1/2"	7.63
WA-7073/11	5/8"	1/2"	20.88
WA-7074/11	3/4"	1/2"	29.32
WA-7074	3/4"	3/4"	22.52

Male Stud Coupling BSPP



ET QC: 1581

Wade

▶▶▶ 8 More Variants available online, or Call Us

Part Number	Tube O/D	BSPP Male Thread	Price
WA-4063/1	1/4"	1/8"	3.22
WA-4061/3	3/16"	1/4"	6.24
WA-1063	1/4"	1/4"	3.22
WA-1065	5/16"	1/4"	3.27
WA-4068/3	3/8"	1/4"	4.48
WA-4063/8	1/4"	3/8"	6.86
WA-4065/8	5/16"	3/8"	5.13
WA-1068	3/8"	3/8"	7.96
WA-4071/8	1/2"	3/8"	10.30
WA-4063/11	1/4"	1/2"	7.34
WA-1071	1/2"	1/2"	7.56
WA-4071/14	1/2"	3/4"	14.62

16

Eurobond
ADHESIVES LIMITED
EBA601
AEROBIC ADHESIVE
Retainer
High Strength

Eurobond
ADHESIVES LIMITED
EBA577
AEROBIC ADHESIVE
Pipe Seal
Repairs PTFE tape

For Eurobond range of sealants and retainers see Section 16

Female Pressure Gauge BSPP



ET QC: 1583

Wade

▶▶▶ 4 More Variants available online, or Call Us

Part Number	Tube O/D	BSPP Female Thread	Price
WA-4083/8A	1/4"	3/8"	9.06

Equal Ended Coupling



ET QC: 1584

Wade

▶▶▶ 1 More Variant available online, or Call Us

Part Number	Tube O/D	Price
WA-1041	3/16"	3.95
WA-1043	1/4"	3.50
WA-1045	5/16"	3.87
WA-1048	3/8"	6.57
WA-1051	1/2"	9.25

Imperial To Metric Coupling



ET QC: 1585

Wade

▶▶▶ Full Range Shown Here

Part Number	Tube O/D (Inch)	Tube O/D (mm)	Price
WA-MC106/3	1/4"	6	6.21
WA-MC110/8	3/8"	10	12.87

Bulkhead Coupling Imperial



ET QC: 1587

Wade

▶▶▶ 2 More Variants available online, or Call Us

Part Number	Tube O/D	Max B/H Plate Thickness	Price
WA-1040/L4	1/8"	1/4"	8.67
WA-1043/L3	1/4"	3/16"	7.42
WA-1043/L6	1/4"	3/8"	6.43
WA-1045/L6	5/16"	3/8"	7.51
WA-1048/L6	3/8"	3/8"	10.42
WA-1051/L8	1/2"	1/2"	18.49
WA-1051/L12	1/2"	3/4"	22.44

Plug Cock - Imperial



ET QC: 1588

Wade

▶▶▶ Full Range Shown Here

Part Number	Tube O/D	Price
WA-3003	1/4"	27.09
WA-3005	5/16"	27.09

See our website for all the sizes we stock

Female Stud Coupling BSPP



ET QC: 1582

Wade

▶▶▶ 4 More Variants available online, or Call Us

Part Number	Tube O/D	BSPP Female Thread	Price
WA-1080	1/8"	1/8"	7.03
WA-1081	3/16"	1/8"	5.51
WA-4083/1	1/4"	1/8"	7.14
WA-4081/3	3/16"	1/4"	6.24
WA-1083	1/4"	1/4"	6.18
WA-4088/3	3/8"	1/4"	7.59
WA-4081/8	3/16"	3/8"	10.72
WA-4083/8	1/4"	3/8"	10.93
WA-1088	3/8"	3/8"	7.59
WA-4091/8	1/2"	3/8"	10.64
WA-4088/11	3/8"	1/2"	9.17
WA-4085/11	5/16"	1/2"	8.47
WA-1091	1/2"	1/2"	13.21

Reducing Coupling Imperial



ET QC: 1586

Wade

▶▶▶ Full Range Shown Here

Part Number	Tube O/D 1	Tube O/D 2	Price
WA-4041/0	3/16"	1/8"	12.59
WA-4043/0	1/4"	1/8"	11.20
WA-4043/1	1/4"	3/16"	6.38
WA-4045/1	5/16"	3/16"	7.31
WA-4045/3	5/16"	1/4"	4.88
WA-4048/3	3/8"	1/4"	5.93
WA-4051/3	1/2"	1/4"	11.12
WA-4048/5	3/8"	5/16"	6.18
WA-4051/5	1/2"	5/16"	12.67
WA-4051/8	1/2"	3/8"	9.82

Male Stud Elbow BSPT



ET QC: 1589

Wade

▶▶▶ 3 More Variants available online, or Call Us

Part Number	Tube O/D	BSPT Male Thread	Price
WA-8020	1/8"	1/8"	11.43
WA-8021	3/16"	1/8"	4.94
WA-8023/1	1/4"	1/8"	6.21
WA-8025/1	5/16"	1/8"	5.87
WA-8023	1/4"	1/4"	6.46
WA-8025	5/16"	1/4"	6.18
WA-8028/3	3/8"	1/4"	9.73
WA-8025/8	5/16"	3/8"	9.39
WA-8028	3/8"	3/8"	9.73
WA-8031/8	1/2"	3/8"	12.64
WA-8028/11	3/8"	1/2"	13.04
WA-8031	1/2"	1/2"	13.04

Female Stud Elbow BSPP



ET QC: 1590



▶▶▶ 1 More Variant available online, or Call Us

Part Number	Tube O/D	BSPP Female Thread	Price
WA-1983	1/4"	1/4"	11.37

Equal Elbows



ET QC: 1591



▶▶▶ 2 More Variants available online, or Call Us

Part Number	Tube O/D	Price
WA-2001	3/16"	10.64
WA-2003	1/4"	6.86
WA-2008	3/8"	9.39
WA-2011	1/2"	13.46

Male Branch Tee BSPT



ET QC: 1592



▶▶▶ Full Range Shown Here

Part Number	Tube O/D	BSPT Male Thread	Price
WA-9063/B	1/4"	1/4"	16.25
WA-9068/3B	3/8"	1/4"	20.41
WA-9068/B	3/8"	3/8"	20.41

Male Run Tee BSPT



ET QC: 1593



▶▶▶ 1 More Variant available online, or Call Us

Part Number	Tube O/D	BSPT Male Thread	Price
WA-9063/E	1/4"	1/4"	16.25

Equal Tee



ET QC: 1594



▶▶▶ 1 More Variant available online, or Call Us

Part Number	Tube O/D	Price
WA-2041	3/16"	8.26
WA-2043	1/4"	7.11
WA-2048	3/8"	12.59
WA-2051	1/2"	17.72

Compression Nut



ET QC: 1596



▶▶▶ 1 More Variant available online, or Call Us

Part Number	Tube O/D	Price
WA-WUN1001	3/16"	0.60
WA-WUN1003	1/4"	0.85
WA-WUN1005	5/16"	0.85
WA-WUN1008	3/8"	1.78
WA-WUN1011	1/2"	2.12

Compression Ring



ET QC: 1597



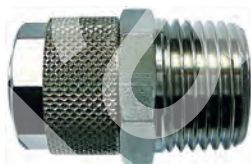
▶▶▶ 6 More Variants available online, or Call Us

Part Number	Tube O/D in Inch	Price
WA-1028	3/8"	0.39
WA-1031	1/2"	0.60
WA-1033	5/8"	2.99
WA-1034	3/4"	2.91

Product

▶ Aignep Quick Fit NP Brass Compression Fittings

Male Stud BSPT



EL QC: 1599



▶▶▶ 7 More Variants available online, or Call Us

Part Number	Tube O/D & I/D (mm)	BSPT Male Thread	Price
QMS04/02	4-2.7	1/8"	1.32
QMS06/02	6-4	1/8"	1.32
QMS06/04	6-4	1/4"	1.41
QMS08/02	8-6	1/8"	1.49
QMS08/04	8-6	1/4"	1.62
QMS10/04	10-8	1/4"	1.87
QMS10/06	10-8	3/8"	2.13
QMS10/08	10-8	1/2"	3.02
QMS12/06	12-10	3/8"	2.60

Swivel Male Stud BSPT



EL QC: 1600



▶▶▶ 4 More Variants available online, or Call Us

Part Number	Tube O/D & I/D (mm)	BSPT Male Thread	Price
QSMS08/04	8-6	1/4"	3.15
QSMS10/04	10-8	1/4"	3.58
QSMS12/06	12-10	3/8"	4.90

Male Stud Spring Guard BSPT



EL QC: 1601



▶▶▶ 9 More Variants available online, or Call Us

Part Number	Tube O/D & I/D (mm)	BSPT Male Thread	Price
QMSG06/02	6-4	1/8"	2.43
QMSG08/06	8-6	3/8"	3.07
QMSG10/06	10-8	3/8"	3.49

Male Stud BSPP & Metric



EL QC: 1602



▶▶▶ 11 More Variants available online, or Call Us

Part Number	Tube O/D - I/D (mm)	BSPP Male Thread	Price
QMSP04/02	4-2.7	1/8"	1.32
QMSP06/02	6-4	1/8"	1.32
QMSP06/04	6-4	1/4"	1.79
QMSP08/02	8-6	1/8"	1.53
QMSP08/04	8-6	1/4"	1.92
QMSP08/06	8-6	3/8"	2.26
QMSP10/02	10-8	1/8"	2.00
QMSP10/04	10-8	1/4"	2.09
QMSP10/08	10-8	1/2"	4.00
QMSP12/08	12-10	1/2"	4.35

Swivel Male Stud BSPP



EL QC: 1603



▶▶▶ 2 More Variants available online, or Call Us

Part Number	Tube O/D & I/D (mm)	BSPP Male Thread	Price
QSMSP06/02	6-4	1/8"	2.73
QSMSP06/04	6-4	1/4"	2.94
QSMSP10/04	10-8	1/4"	3.58

Female Stud BSPP



EL QC: 1604



▶▶▶ 7 More Variants available online, or Call Us

Part Number	Tube O/D & I/D (mm)	BSPP Female Thread	Price
QFS06/02	6-4	1/8"	1.36
QFS06/04	6-4	1/4"	1.75
QFS08/04	8-6	1/4"	1.87
QFS12/06	12-10	3/8"	4.17

Straight Connector



EL QC: 1605



▶▶▶ 8 More Variants available online, or Call Us

Part Number	Tube O/D (A) (mm)	Tube O/D (B) (mm)	Price
QEC06/06	6-4	6-4	2.13
QEC08/06	8-6	6-4	2.34
QEC08/08	8-6	8-6	2.30

Bulk Head Connector



EL QC: 1606



▶▶▶ 4 More Variants available online, or Call Us

Part Number	Tube O/D & I/D A (mm)	Tube O/D & I/D B (mm)	Metric \ Male Thread	Price
QBH05/05	5-3	5-3	M7 X 0.75	3.66
QBH06/05	6-4	5-3	M10 X 1.0	3.75
QBH06/06	6-4	6-4	M10 X 1.0	3.66
QBH08/06	8-6	6-4	M12 X 1.0	4.22
QBH10/06	10-8	6-4	M14 X 1.0	5.03
QBH12/12	12-10	12-10	M16 X 1.0	5.54
QBH15/15	15-12.5	15-12.5	M20 x 1.0	9.07

Male Stud Elbow BSPT



EL QC: 1607



▶▶▶ 7 More Variants available online, or Call Us

Part Number	Tube O/D & I/D (mm)	BSPT Male Thread	Price
QML04/02	4-2.7	1/8"	2.43
QML06/02	6-4	1/8"	1.79
QML06/04	6-4	1/4"	1.92
QML08/02	8-6	1/8"	1.92
QML08/04	8-6	1/4"	2.13
QML10/04	10-8	1/4"	2.56
QML10/06	10-8	3/8"	2.94
QML12/06	12-10	3/8"	3.62
QML12/08	12-10	1/2"	4.90

Male Swivel Stud Elbow BSPT



EL QC: 1608



▶▶▶ Full Range Shown Here

Part Number	Tube O/D & I/D (mm)	BSPT Male Thread	Price
QSMSL06/02	6-4	1/8"	3.02
QSMSL06/04	6-4	1/4"	3.49
QSMSL08/02	8-6	1/8"	3.24
QSMSL08/04	8-6	1/4"	3.62
QSMSL10/04	10-8	1/4"	4.17

Male Swivel Stud Elbow BSPP



EL QC: 1609



▶▶▶ Full Range Shown Here

Part Number	Tube O/D - I/D (mm)	BSPP Male Thread	Price
QSMSLP06/02	6-4	1/8"	3.02
QSMSLP06/04	6-4	1/4"	3.49
QSMSLP08/02	8-6	1/8"	3.24
QSMSLP08/04	8-6	1/4"	3.62
QSMSLP10/04	10-8	1/4"	4.17



Single Banjo Body



EL QC: 1610



▶▶▶ 20 More Variants available online, or Call Us

Part Number	Tube O/D & I/D (mm)	To Suit Banjo Bolt Thread	Price
QSB110/08	10-8	1/2"	3.96

Single Banjo Bolt



EL QC: 1611



▶▶▶ 4 More Variants available online, or Call Us

Part Number	BSPT Male Thread	Price
QSBBS5	M5	1.07
QSBBS6	3/8"	2.51

Equal Elbow



EL QC: 1612



▶▶▶ 4 More Variants available online, or Call Us

Part Number	Tube O/D & I/D (mm)	Price
QL06/06	6-4	2.43
QL12/12	12-10	4.64
QL15/15	15/12.5	6.65

Male Swivel Stud Tee BSPT



EL QC: 1613



▶▶▶ 4 More Variants available online, or Call Us

Part Number	Tube O/D & I/D (mm)	BSPT Male Thread	Price
QSMTO6/04	6-4	1/4"	4.30

Equal Tee



EL QC: 1614



▶▶▶ 1 More Variant available online, or Call Us

Part Number	Tube O/D & I/D (mm)	Price
QT04	4-2.7	3.66
QT06	6-4	3.15
QT08	8-6	3.49
QT10	10-8	4.60
QT12	12-10	6.39
QT15	15-12.5	9.59

Equal Cross



EL QC: 1615



▶▶▶ 2 More Variants available online, or Call Us

Part Number	Tube O/D & I/D (mm)	Price
QX05	5-3	5.11
QX08	8-6	5.92
QX12	12-10	10.61
QX15	15/12.5	15.59

Quick Fit Flow Regulator - Manual



EL QC: 1616



▶▶▶ Full Range Shown Here

Part Number	Tube O/D - I/D (mm)	BSPP Male Thread	Price
QSCL04/02	4-2.7	1/8"	13.16
QSCL06/02	6-4	1/8"	13.16
QSCL06/04	6-4	1/4"	14.78
QSCL08/02	8-6	1/8"	13.16
QSCL08/04	8-6	1/4"	14.78
QSCL10/04	10-8	1/4"	15.21

Locking Nut



EL QC: 1617



6 More Variants available online, or Call Us

Part Number	Tube O/D & I/D (mm)	Metric Thread	Price
QLN08/M12	8-6	M12 X 1.0	0.51
QLN12/M16	12-8	M16 X 1.0	0.89

Male Stud Spring Guard BSPT



EL QC: 1601



9 More Variants available online, or Call Us

Part Number	Price
QMSG06/02	2.43
QMSG08/06	3.07
QMSG10/06	3.49

Product **Copper & Bundy Tube**

Copper Tube Metric Annealed Soft 10 Mtr Coil



QD QC: 2614

Full Range Shown Here

Part Number	Tube O/D (mm)	Tube I/D (mm)	Wall Thickness (mm)	Max. Working Pressure (psi)	Price
CTMC04	4	2.8	0.6	1993	25.47
CTMC05	5	3.4	0.8	2124	34.76
CTMC06	6	4.4	0.8	1760	38.21
CTMC08	8	6.4	0.8	1324	59.43
CTMC10	10	8.4	0.8	1047	63.69
CTMC12	12	10.0	1.0	1091	92.48
CTMC15	15	13	1	1265	161.63

Copper Tube Metric Annealed Soft 30 Mtr Coil



QD QC: 2615

Full Range Shown Here

Part Number	Tube O/D (mm)	Tube I/D (mm)	Wall Thickness (mm)	Max. Working Pressure (psi)	Price
CTMC0430	4	2.8	0.6	1993	75.87
CTMC0630	6	4.4	0.8	1760	123.54
CTMC0830	8	6.4	0.8	1324	165.16
CTMC1030	10	8.4	0.8	1047	206.61
CTMC1230	12	10.0	1.0	1091	255.60
CTMC1530	15	13	1	1265	435.67

Copper Tube Imperial Annealed Soft 10 Mtr Coil



QD QC: 2616

Full Range Shown Here

Part Number	Tube O/D (Inch)	Tube I/D (Inch)	Wall Thickness (Inch)	Max. Working Pressure (psi)	Price
CTIC02	1/8"	0.069"	0.028"	3026	29.35
CTIC03	3/16"	0.131"	0.028"	1978	29.82
CTIC04	1/4"	0.194"	0.028"	1484	41.62
CTIC05	5/16"	0.256"	0.028"	1178	51.12
CTIC06	3/8"	0.319"	0.028"	974	64.24
CTIC08	1/2"	0.428"	0.036"	945	95.89
CTIC10	5/8"	0.553"	0.036"	742	123.67
CTIC12	3/4"	0.678"	0.036"	625	144.54

Copper Tube Imperial Annealed Soft 30 Mtr Coil



QD QC: 2617

Full Range Shown Here

Part Number	Tube O/D (Inch)	Tube I/D (Inch)	Wall Thickness (Inch)	Max. Working Pressure (psi)	Price
CTIC0230	1/8"	0.069"	0.028"	3026	94.49
CTIC0330	3/16"	0.131"	0.028"	1978	89.46
CTIC0430	1/4"	0.194"	0.028"	1484	124.82
CTIC0530	5/16"	0.256"	0.028"	1178	140.58
CTIC0630	3/8"	0.319"	0.028"	974	181.22
CTIC0830	1/2"	0.428"	0.036"	945	293.22
CTIC1030	5/8"	0.553"	0.036"	742	371.00
CTIC1230	3/4"	0.678"	0.036"	625	433.75

See our website for all the sizes we stock

PVC Coated Soft Copper Tube Metric 30 Mtr



QF QC: 2618

Full Range Shown Here

Part Number	Tube O/D (mm)	Tube I/D (mm)	Max. Working Pressure (psi)	Price
PCTMC06	6	4	2211	232.17
PCTMC08	8	6	1658	289.68
PCTMC10	10	8	1324	447.30
PCTMC12	12	10	1091	740.94

PVC Coated Soft Copper Tube Imperial 30 Mtr



QD QC: 2619

Full Range Shown Here

Part Number	Tube O/D (mm)	Tube I/D (mm)	Max. Working Pressure (psi)	Price
PCTIC04	1/4"	0.194"	1891	208.74
PCTIC05	5/16"	0.256"	1513	269.15
PCTIC06	3/8"	0.319"	1265	330.36
PCTIC08	1/2"	0.444"	945	513.76

Heavy Duty Pipe Bending Kit 15mm & 22mm



TC QC: 7601

Full Range Shown Here

Part Number	Description	Price
20501522	Pipe Bending Kit	44.20

Copper Tube Metric 3 Mtr Half Hard Straight Lengths



QD QC: 2620

Full Range Shown Here

Part Number	Tube O/D (mm)	Tube I/D (mm)	Wall Thickness (mm)	Max. Working Pressure (psi)	Price
CTMS04	4	2.8	0.6	2604	10.22
CTMS05	5	3.4	0.8	2779	15.85
CTMS06	6	4	1	2885	14.23
CTMS08	8	6	1	2167	20.41
CTMS10	10	8	1	1781	25.22
CTMS12	12	10	1	1440	31.74
CTMS15	15	13	1	1149	47.56
CTMS16	16	13.6	1.2	1280	52.82
CTMS18	18	15.6	1.2	1193	144.63
CTMS22	22	19	1.5	1164	90.74
CTMS28	28	25	1.5	902	124.48

Copper Tube Imperial 3 Mtr Half Hard Straight Lengths



QE QC: 2621

Full Range Shown Here

Part Number	Tube O/D (Inch)	Tube I/D (Inch)	Wall Thickness (Inch)	Max. Working Pressure (psi)	Price
CTIS02	1/8"	0.069"	0.028"	3928	12.47
CTIS03	3/16"	0.131"	0.028"	2589	14.70
CTIS04	1/4"	0.194"	0.028"	2488	16.32
CTIS05	5/16"	0.256"	0.028"	1978	20.41
CTIS06	3/8"	0.319"	0.028"	1644	21.51
CTIS08	1/2"	0.428"	0.036"	1236	64.75
CTIS10	5/8"	0.553"	0.036"	974	47.84
CTIS12	3/4"	0.678"	0.064"	1105	81.15

Plumbing Copper Tube - 10 Pack 3 Mtr Lengths



QG QC: 2622

▶▶▶ Full Range Shown Here

Part Number	Tube O/D (mm)	Wall Thickness (mm)	Max. Working Pressure (bar)	Price
PCMS15	15	0.7	843	254.32
PCMS22	22	0.9	752	403.85
PCMS28	28	0.9	582	558.49

Bundy Tube - Metric



QH QC: 2623

▶▶▶ Full Range Shown Here

Part Number	Tube O/D (mm)	Wall Thickness (Inch)	Length (M)	Burst Pressure (psi)	Price
BTM04	4	0.075	3.2	16500	19.36
BTM06	6	0.075	3.2	13500	14.41
BTM08	8	0.075	3.2	10875	18.37
BTM10	10	0.075	3.2	7500	21.44

Bundy Tube - Imperial



QH QC: 2624

▶▶▶ Full Range Shown Here

Part Number	Tube O/D (Inch)	Wall Thickness (Inch)	Length (M)	Burst Pressure (psi)	Price
BTI02	1/8"	0.028	3.2	17500	15.66
BTI03	3/16"	0.028	3.2	16500	12.30
BTI04	1/4"	0.028	3.2	12000	15.14
BTI05	5/16"	0.028	3.2	10875	18.37
BTI06	3/8"	0.028	3.2	8200	20.96
BTI08	1/2"	0.028	3.2	5000	34.70



Grippaz®

Different To Any Other Gloves In Their Field

Developed to provide optimal performance in a range of working conditions.

AMBIDEXTROUS

You don't have to split a pair to replace a damaged glove.

DEXTERITY

CE level 5. The maximum.

FIT

The stretch formula nitrile allows GRIPPAZ to fit more snugly than traditional gloves.

NITRILE

100% nitrile. No issues with latex protein allergy and better chemical and puncture resistance than latex.

CUFF

Not a typical glove shape. The cuff is beaded and designed so it doesn't flop down in use and can easily be worn under over sleeves.

TRACTION GRIP

Ergonomically designed for wet grip on the outside and also to reduce hand slippage on the inside.

FREE SAMPLE

Don't miss out, call us