

# Industrial Hose Tails and Adaptors

## PRODUCTS

Hosetails BSPT/BSPP/NPT/Metric	1	Tees	14
Connectors BSPT/BSPP/NPT/Metric	5	Y and Triple Outlets	15
Bushes BSPT/BSPP/NPT/Metric	8	Crosses	16
Sockets BSPP/NPT/Metric	9	Manifolds	16
Plugs, Caps and Locknuts	10	Oxy-Acetylene Fittings	17
Elbows	13		



## BRANDS



**Product** ▶ Hosetails BSPT/BSPP/NPT/Metric

**Male Hosetail BSPT**



DB QC: 1303



▶▶▶ Full Range Shown Here

Part Number	BSPT Male	Hosetail	Price
MH02/02	1/8"	1/8" (3)	0.77
MH02/03	1/8"	3/16" (5)	0.81
MH02/04	1/8"	1/4" (6)	0.81
MH02/05	1/8"	5/16" (8)	0.96
MH02/06	1/8"	3/8" (10)	1.03
MH02/08	1/8"	1/2" (12)	1.17
MH04/02	1/4"	1/8" (3)	1.47
MH04/03	1/4"	3/16" (5)	1.46
MH04/04	1/4"	1/4" (6)	1.46
MH04/05	1/4"	5/16" (8)	1.46
MH04/06	1/4"	3/8" (10)	1.84
MH04/08	1/4"	1/2" (12)	2.28
MH04/10	1/4"	5/8" (16)	1.82
MH04/12	1/4"	3/4" (19)	2.93
MH06/03	3/8"	3/16" (5)	2.73
MH06/04	3/8"	1/4" (6)	1.77
MH06/05	3/8"	5/16" (8)	1.55
MH06/06	3/8"	3/8" (10)	1.98
MH06/08	3/8"	1/2" (12)	2.64
MH06/10	3/8"	5/8" (16)	2.86
MH06/12	3/8"	3/4" (19)	4.29
MH08/03	1/2"	3/16" (5)	2.86
MH08/04	1/2"	1/4" (6)	2.22
MH08/05	1/2"	5/16" (8)	2.42
MH08/06	1/2"	3/8" (10)	2.80
MH08/08	1/2"	1/2" (12)	2.80
MH08/10	1/2"	5/8" (16)	2.80
MH08/12	1/2"	3/4" (19)	3.45
MH08/16	1/2"	1" (25)	5.67
MH10/10	5/8"	5/8" (16)	4.33
MH12/04	3/4"	1/4" (6)	4.33
MH12/05	3/4"	5/16" (8)	4.33
MH12/06	3/4"	3/8" (10)	4.05
MH12/08	3/4"	1/2" (12)	4.05
MH12/10	3/4"	5/8" (16)	4.05
MH12/12	3/4"	3/4" (19)	4.40
MH12/16	3/4"	1" (25)	5.30
MH12/20	3/4"	1.1/4" (32)	9.92
MH16/08	1"	1/2" (12)	7.72
MH16/10	1"	5/8" (16)	7.72
MH16/12	1"	3/4" (19)	7.72
MH16/16	1"	1" (25)	8.45
MH16/20	1"	1.1/4" (32)	8.74
MH16/24	1"	1.1/2" (38)	14.56
MH20/12	1.1/4"	3/4" (19)	19.03
MH20/16	1.1/4"	1" (25)	19.03
MH20/20	1.1/4"	1.1/4" (32)	11.68
MH20/24	1.1/4"	1.1/2" (38)	19.03
MH24/20	1.1/2"	1.1/4" (32)	30.86
MH24/24	1.1/2"	1.1/2" (38)	20.50
MH24/32	1.1/2"	2" (50)	33.73
MH32/24	2"	1.1/2" (38)	35.20
MH32/32	2"	2" (50)	33.73
MH40/40	2.1/2"	2.1/2" (63)	49.90
MH48/48	3"	3" (75)	67.53

**Male Hosetail BSPT - Nickel Plated**

DC QC: 4036



▶▶▶ 9 More Variants available online, or Call Us

Part Number	BSPT Male	Hosetail	Price
MH02/03NP	1/8"	3/16" (5)	0.91
MH02/04NP	1/8"	1/4" (6)	0.91
MH02/05NP	1/8"	5/16" (8)	1.08
MH02/06NP	1/8"	3/8" (10)	1.16
MH02/08NP	1/8"	1/2" (12)	1.32
MH04/03NP	1/4"	3/16" (5)	1.64
MH04/04NP	1/4"	1/4" (6)	1.64
MH04/05NP	1/4"	5/16" (8)	1.64
MH04/06NP	1/4"	3/8" (10)	2.07
MH04/08NP	1/4"	1/2" (12)	2.56
MH04/10NP	1/4"	5/8" (16)	1.90
MH04/12NP	1/4"	3/4" (19)	3.29
MH06/03NP	3/8"	3/16" (5)	3.07
MH06/04NP	3/8"	1/4" (6)	1.98
MH06/05NP	3/8"	5/16" (8)	1.76
MH06/06NP	3/8"	3/8" (10)	2.23
MH06/08NP	3/8"	1/2" (12)	2.97
MH06/10NP	3/8"	5/8" (16)	3.22
MH06/12NP	3/8"	3/4" (19)	4.84
MH08/04NP	1/2"	1/4" (6)	2.49
MH08/05NP	1/2"	5/16" (8)	3.05
MH08/06NP	1/2"	3/8" (10)	3.15
MH08/08NP	1/2"	1/2" (12)	3.15
MH08/10NP	1/2"	5/8" (16)	3.15
MH08/12NP	1/2"	3/4" (19)	3.89
MH08/16NP	1/2"	1" (25)	6.37
MH12/06NP	3/4"	3/8" (10)	5.30
MH12/08NP	3/4"	1/2" (12)	4.56
MH12/10NP	3/4"	5/8" (16)	4.72
MH12/12NP	3/4"	3/4" (19)	4.94
MH12/16NP	3/4"	1" (25)	5.99
MH16/08NP	1"	1/2" (12)	8.68
MH16/12NP	1"	3/4" (19)	8.68
MH16/16NP	1"	1" (25)	9.50
MH16/20NP	1"	1.1/4" (32)	9.83
MH16/24NP	1"	1.1/2" (38)	13.41
MH20/16NP	1.1/4"	1" (25)	21.41
MH20/20NP	1.1/4"	1.1/4" (32)	13.14
MH24/24NP	1.1/2"	1.1/2" (38)	23.06
MH24/32NP	1.1/2"	2" (50)	37.95
MH32/24NP	2"	1.1/2" (38)	39.60
MH32/32NP	2"	2" (50)	37.95

**Aignep Male Hosetail BSPT - Nickel Plated**

DE QC: 1304



▶▶▶ 12 More Variants available online, or Call Us

Part Number	BSPT Male	Hosetail	Price
MHA02/06MMNP	1/8"	6	1.19
MHA02/08MMNP	1/8"	8	1.24
MHA04/06MMNP	1/4"	6	1.33
MHA04/07MMNP	1/4"	7	1.33
MHA04/08MMNP	1/4"	8	1.38
MHA04/10MMNP	1/4"	10	1.38
MHA08/10MMNP	1/2"	10	2.76
MHA08/11MMNP	1/2"	12	3.00
MHA08/12MMNP	1/2"	14	3.00
MHA08/20MMNP	1/2"	20	4.48
MHA12/20MMNP	3/4"	20	6.48
MHA12/25MMNP	3/4"	25	6.86
MHA16/25MMNP	1"	25	10.48

**Male Hosetail BSPT - Nickel Plated**

DF QC: 1305



▶▶▶ 4 More Variants available online, or Call Us

Part Number	BSPT Male	Hosetail	Price
MC1/2-13	1/2"	13	2.90
MC3/4-13	3/4"	13	5.11
MC3/4-16	3/4"	16	5.96
MC3/4-19	3/4"	19	5.41
MC1-25	1"	25	10.27

**Male Hosetail BSPT (Fulham)**

AX QC: 1306



▶▶▶ Full Range Shown Here

Part Number	BSPT Male	Hosetail	Price
MHF04/06	1/4"	3/8" (10)	2.56
MHF06/06	3/8"	3/8" (10)	3.20
MHF08/06	1/2"	3/8" (10)	5.05



**Other sizes available from stock - see online**

**Male Hosetail BSPT - Steel**

DG QC: 1307



▶▶▶ 3 More Variants available online, or Call Us

Part Number	BSPT Male	Hosetail	Price
SMH04/04	1/4"	1/4" (6)	1.44
SMH04/05	1/4"	5/16" (8)	1.44
SMH04/06	1/4"	3/8" (10)	1.44
SMH04/08	1/4"	1/2" (12)	1.44
SMH06/04	3/8"	1/4" (6)	2.00
SMH06/06	3/8"	3/8" (10)	2.00
SMH06/08	3/8"	1/2" (12)	2.00
SMH08/06	1/2"	3/8" (10)	2.98
SMH08/08	1/2"	1/2" (12)	2.98
SMH12/12	3/4"	3/4" (19)	10.70
SMH12/16	3/4"	1" (25)	10.70
SMH16/16	1"	1" (25)	17.68

**Male Hosetail BSPT Swivel**



DJ QC: 1308



Full Range Shown Here

Part Number	BSPT Male	Hosetail	Price
MH04/04S	1/4"	1/4"	1.98
MH06/06S	3/8"	3/8"	3.51

**Combination Nipple BSPT**



DK QC: 1309



Full Range Shown Here

Part Number	BSPT Male	Hosetail	Price
CMH08/08	1/2"	1/2" (12)	1.31
CMH12/12	3/4"	3/4" (19)	2.34
CMH16/16	1"	1" (25)	2.53
CMH20/20	1.1/4"	1.1/4" (32)	4.09
CMH24/24	1.1/2"	1.1/2" (38)	4.03
CMH32/32	2"	2" (50)	6.46
CMH40/40	2.1/2"	2.1/2" (63)	9.14
CMH48/48	3"	3" (75)	27.56
CMH64/64	4"	4" (100)	23.64

**Male Hosetail BSPP**



DL QC: 1310



Full Range Shown Here

Part Number	BSPP Male	Hosetail	Price
MHP02/02	1/8"	1/8" (3)	1.94
MHP02/03	1/8"	3/16" (5)	1.94
MHP02/04	1/8"	1/4" (6)	1.94
MHP02/05	1/8"	5/16" (8)	1.94
MHP02/06	1/8"	3/8" (10)	1.94
MHP04/03	1/4"	3/16" (5)	2.27
MHP04/04	1/4"	1/4" (6)	1.91
MHP04/05	1/4"	5/16" (8)	2.27
MHP04/06	1/4"	3/8" (10)	2.27
MHP04/08	1/4"	1/2" (12)	4.25
MHP06/04	3/8"	1/4" (6)	3.09
MHP06/05	3/8"	5/16" (8)	3.09
MHP06/06	3/8"	3/8" (10)	3.20
MHP06/08	3/8"	1/2" (12)	3.26
MHP06/10	3/8"	5/8" (16)	3.32
MHP06/12	3/8"	3/4" (19)	3.78
MHP08/04	1/2"	1/4" (6)	4.25
MHP08/05	1/2"	5/16" (8)	4.25
MHP08/06	1/2"	3/8" (10)	5.29
MHP08/08	1/2"	1/2" (12)	4.54
MHP08/10	1/2"	5/8" (16)	5.29
MHP08/12	1/2"	3/4" (19)	5.29
MHP08/16	1/2"	1" (25)	7.63
MHP12/04	3/4"	1/4" (6)	8.68
MHP12/05	3/4"	5/16" (8)	8.68
MHP12/06	3/4"	3/8" (10)	8.68
MHP12/08	3/4"	1/2" (12)	8.69
MHP12/10	3/4"	5/8" (16)	8.68
MHP12/12	3/4"	3/4" (19)	7.56
MHP12/16	3/4"	1" (25)	8.73
MHP16/08	1"	1/2" (12)	13.98
MHP16/10	1"	5/8" (16)	13.98
MHP16/12	1"	3/4" (19)	13.99
MHP16/16	1"	1" (25)	11.07
MHP16/20	1"	1.1/4" (32)	14.04
MHP20/16	1.1/4"	1" (25)	30.18
MHP20/20	1.1/4"	1.1/4" (32)	30.18
MHP20/24	1.1/4"	1.1/2" (38)	37.53
MHP24/24	1.1/2"	1.1/2" (38)	42.06
MHP32/24	2"	1.1/2" (38)	52.55
MHP32/32	2"	2" (50)	52.55

**Male Hosetail NPT**



DL QC: 1312



1 More Variant available online, or Call Us

Part Number	NPT Male	Hosetail	Price
MHN02/02	1/8"	1/8" (3)	1.55
MHN02/03	1/8"	3/16" (5)	1.61
MHN02/04	1/8"	1/4" (6)	1.61
MHN02/05	1/8"	5/16" (8)	1.61
MHN02/06	1/8"	3/8" (10)	1.61
MHN04/03	1/4"	3/16" (5)	1.46
MHN04/04	1/4"	1/4" (6)	2.80
MHN04/05	1/4"	5/16" (8)	2.26
MHN04/06	1/4"	3/8" (10)	2.26
MHN04/08	1/4"	1/2" (12)	2.26
MHN06/04	3/8"	1/4" (6)	2.80
MHN06/05	3/8"	5/16" (8)	2.80
MHN06/06	3/8"	3/8" (10)	2.80
MHN06/08	3/8"	1/2" (12)	2.80
MHN06/10	3/8"	5/8" (16)	4.24
MHN06/12	3/8"	3/4" (19)	4.78
MHN08/04	1/2"	1/4" (6)	4.78
MHN08/05	1/2"	5/16" (8)	4.78
MHN08/06	1/2"	3/8" (10)	7.66
MHN08/08	1/2"	1/2" (12)	6.40
MHN08/10	1/2"	5/8" (16)	8.86
MHN08/12	1/2"	3/4" (16)	6.04
MHN08/16	1/2"	1" (25)	6.91
MHN12/08	3/4"	1/2" (12)	8.20
MHN12/10	3/4"	5/8" (16)	8.20
MHN12/12	3/4"	3/4" (19)	8.20
MHN12/16	3/4"	1" (25)	8.20
MHN12/20	3/4"	1.1/4" (32)	8.38
MHN16/08	1"	1/2" (12)	13.56
MHN16/10	1"	5/8" (16)	13.56
MHN16/12	1"	3/4" (19)	13.56
MHN16/16	1"	1" (25)	13.56
MHN16/20	1"	1.1/4" (32)	13.56
MHN20/12	1.1/4"	3/4" (19)	29.59
MHN20/16	1.1/4"	1" (25)	29.59
MHN20/20	1.1/4"	1.1/4" (32)	29.59
MHN20/24	1.1/4"	1.1/2" (38)	29.59
MHN24/20	1.1/2"	1.1/4" (32)	47.03
MHN24/24	1.1/2"	1.1/2" (38)	46.80
MHN24/32	1.1/2"	2" (50)	47.03
MHN32/24	2"	1.1/2" (38)	70.14
MHN32/32	2"	2" (50)	70.14

**Aignep Male Hosetail BSPP - Nickel Plated**



DE QC: 1311



4 More Variants available online, or Call Us

Part Number	BSPP Male	Hosetail	Price
MHPAM5/4.5MMNP	M5	4	0.86
MHPA02/7MMNP	1/8"	7	1.29
MHPA04/7MMNP	1/4"	7	1.62
MHPA04/9MMNP	1/4"	9	1.67
MHPA04/12MMNP	1/4"	12	1.71
MHPA06/9MMNP	3/8"	9	2.10
MHPA06/12MMNP	3/8"	12	2.10
MHPA08/12MMNP	1/2"	12	3.62

**Male Hosetail Metric**



DL QC: 1313



1 More Variant available online, or Call Us

Part Number	Metric Male	Hosetail	Price
MHM5/3MM	M5x0.8	3mm	1.75
MHM5/4MM	M5x0.8	4mm	2.02
MHM6/4MM	M6x1.0	4mm	2.02
MHM8/04	M8x1.0	1/4" (6)	3.06
MHM10/04	M10x1.0	1/4" (6)	3.54
MHM10/05	M10x1.0	5/16" (8)	3.60
MHM10/06	M10x1.0	3/8" (10)	3.67
MHM12/04	M12x1.5	1/4" (6)	3.78
MHM12/05	M12x1.5	5/16" (8)	3.83
MHM12/06	M12x1.5	3/8" (10)	3.92
MHM14/06	M14x1.5	3/8" (10)	4.40
MHM16/06	M16x1.5	3/8" (10)	5.37
MHM16/08	M16x1.5	1/2" (12)	5.37
MHM18/06	M18x1.5	3/8" (10)	8.78
MHM18/08	M18x1.5	1/2" (12)	8.78
MHM22/12	M22x1.5	3/4" (19)	7.90

**Aignep Male Hosetail Metric**



DE QC: 1314



▶▶▶ 2 More Variants available online, or Call Us

Part Number	Metric Male	Hosetail	Price
15000-M5-4	M5	4	1.19

**Male Lugged Fitting - BSPP**



BI QC: 1329



▶▶▶ 5 More Variants available online, or Call Us

Part Number	BSPP Male	Hosetail	Price
LM12	3/4"	3/4" (19)	2.71
LM20	1.1/4"	1.1/4" (32)	13.62
LM48	3"	3" (75)	49.01
LM64	4"	4" (100)	133.54

**Female Hosetail Coned BSPP**



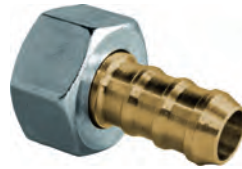
AU QC: 1315



▶▶▶ 1 More Variant available online, or Call Us

Part Number	BSPP Female	Hosetail	Price
FHC02/02	1/8"	1/8" (3)	2.41
FHC02/03	1/8"	3/16" (5)	2.80
FHC02/04	1/8"	1/4" (6)	1.03
FHC04/03	1/4"	3/16" (5)	2.28
FHC04/04	1/4"	1/4" (6)	2.30
FHC04/05	1/4"	5/16" (8)	2.31
FHC04/06	1/4"	3/8" (10)	2.34
FHC06/04	3/8"	1/4" (6)	2.41
FHC06/05	3/8"	5/16" (8)	2.41
FHC06/06	3/8"	3/8" (10)	2.63
FHC06/08	3/8"	1/2" (12)	2.56
FHC08/04	1/2"	1/4" (6)	2.88
FHC08/05	1/2"	5/16" (8)	3.59
FHC08/06	1/2"	3/8" (10)	4.23
FHC08/08	1/2"	1/2" (12)	4.32
FHC08/10	1/2"	5/8" (16)	4.32
FHC12/06	3/4"	3/8" (10)	5.83
FHC12/08	3/4"	1/2" (12)	9.02
FHC12/10	3/4"	5/8" (16)	6.15
FHC12/12	3/4"	3/4" (19)	6.32
FHC16/08	1"	1/2" (12)	9.51
FHC16/10	1"	5/8" (16)	9.51
FHC16/12	1"	3/4" (19)	12.71
FHC16/16	1"	1" (25)	9.51
FHC20/16	1.1/4"	1" (25)	20.69
FHC20/20	1.1/4"	1.1/4" (32)	20.69
FHC24/20	1.1/2"	1.1/4" (32)	31.88
FHC24/24	1.1/2"	1.1/2" (38)	31.88
FHC32/24	2"	1.1/2" (38)	66.24
FHC32/32	2"	2" (50)	66.24

**Female Hosetail Coned BSPP NP**



DN QC: 1316



▶▶▶ 4 More Variants available online, or Call Us

Part Number	BSPP Female	Hosetail	Price
F01/2-13	1/2"	13mm	2.18
F01/2-16	1/2"	16mm	2.74
F03/4-16	3/4"	16mm	3.83
F03/4-19	3/4"	19mm	3.88

**Female Hosetail Coned BSPP Zinc Plated**



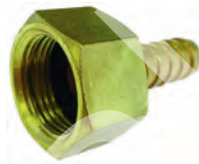
AH QC: 1317



▶▶▶ 3 More Variants available online, or Call Us

Part Number	BSPP Female	Hosetail	Price
SFHC04/04	1/4"	1/4" (6)	1.40
SFHC04/05	1/4"	5/16" (8)	1.40
SFHC04/06	1/4"	3/8" (10)	1.40
SFHC06/06	3/8"	3/8" (10)	2.23

**Female Hosetail Flat Seat BSPP**



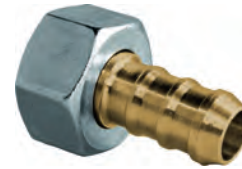
AX QC: 1318



▶▶▶ 1 More Variant available online, or Call Us

Part Number	BSPP Female	Hosetail	Price
FHW02/02	1/8"	1/8" (3)	2.60
FHW02/04	1/8"	1/4" (6)	2.60
FHW04/03	1/4"	3/16" (5)	2.85
FHW04/04	1/4"	1/4" (6)	2.85
FHW04/05	1/4"	5/16" (8)	2.85
FHW04/06	1/4"	3/8" (10)	2.85
FHW06/04	3/8"	1/4" (6)	3.31
FHW06/05	3/8"	5/16" (8)	3.31
FHW06/06	3/8"	3/8" (10)	3.82
FHW06/08	3/8"	1/2" (12)	3.82
FHW08/04	1/2"	1/4" (6)	4.21
FHW08/05	1/2"	5/16" (8)	4.21
FHW08/06	1/2"	3/8" (10)	4.21
FHW08/08	1/2"	1/2" (12)	4.21
FHW08/10	1/2"	5/8" (16)	4.86
FHW12/06	3/4"	3/8" (10)	7.73
FHW12/08	3/4"	1/2" (12)	7.49
FHW12/10	3/4"	5/8" (16)	7.49
FHW12/12	3/4"	3/4" (19)	7.52
FHW16/08	1"	1/2" (12)	12.59
FHW16/10	1"	5/8" (16)	12.59
FHW16/12	1"	3/4" (19)	12.59
FHW16/16	1"	1" (25)	10.91
FHW20/20	1.1/4"	1.1/4" (32)	21.48
FHW24/24	1.1/2"	1.1/2" (38)	34.68
FHW32/32	2"	2" (50)	76.17

**Female Hosetail Flat Seat BSPP NP**



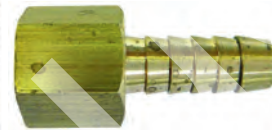
DN QC: 1319



▶▶▶ 4 More Variants available online, or Call Us

Part Number	BSPP Female	Hosetail	Price
FP3/8-10BX	3/8"	10mm	1.28
FP1/2-10BX	1/2"	10mm	1.67
FP1/2-13BX	1/2"	13mm	2.00
FP1/2-16BX	1/2"	16mm	2.18
FP3/4-13BX	3/4"	13mm	3.02
FP3/4-19BX	3/4"	19mm	3.65
FP1-25BX	1"	25mm	6.13

**Female Hosetail Fixed BSPP**



AX QC: 1320



▶▶▶ Full Range Shown Here

Part Number	BSPP Female	Hosetail	Price
FFH02/03	1/8"	3/16" (5)	1.86
FFH02/04	1/8"	1/4" (6)	1.51
FFH02/05	1/8"	5/16" (8)	1.64
FFH02/06	1/8"	3/8" (10)	1.93
FFH04/03	1/4"	3/16" (5)	1.93
FFH04/04	1/4"	1/4" (6)	1.79
FFH04/05	1/4"	5/16" (8)	1.79
FFH04/06	1/4"	3/8" (10)	2.10
FFH04/08	1/4"	1/2" (12)	2.15
FFH06/04	3/8"	1/4" (6)	2.61
FFH06/05	3/8"	5/16" (8)	2.23
FFH06/06	3/8"	3/8" (10)	2.23
FFH06/08	3/8"	1/2" (12)	2.23
FFH08/04	1/2"	1/4" (6)	4.14
FFH08/05	1/2"	5/16" (8)	4.14
FFH08/06	1/2"	3/8" (10)	4.14
FFH08/08	1/2"	1/2" (12)	5.15
FFH08/10	1/2"	5/8" (16)	5.15
FFH08/12	1/2"	3/4" (19)	5.15
FFH08/16	1/2"	1" (25)	5.15

**Female Lugged Fitting - BSPP**



DM QC: 1330



▶▶▶ Full Range Shown Here

Part Number	BSPP Female	Hosetail	Price
LF08	1/2"	1/2" (12)	2.71
LF12/08	3/4"	1/2" (12)	4.28
LF12	3/4"	3/4" (19)	4.16
LF16/12	1"	3/4" (19)	8.97
LF16	1"	1" (25)	5.67
LF20	1.1/4"	1.1/4" (32)	11.57
LF24	1.1/2"	1.1/2" (38)	17.42
LF32	2"	2" (50)	24.90
LF40	2.1/2"	2.1/2" (63)	74.83
LF48	3"	3" (75)	54.07
LF64	4"	4" (100)	129.77

**Metric Compression Hosetail**



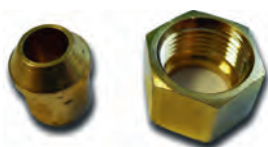
DN QC: 1321



▶▶▶ 2 More Variants available online, or Call Us

Part Number	Tube O.D	Hosetail	Price
MB15-13BX	15mm	13mm	3.58
MB22-13BX	22mm	13mm	5.11
MB22-19BX	22mm	19mm	7.27
MB28-1BX	28mm	25mm	13.50

**Soldering Nut & Nipple**



AX QC: 1322



▶▶▶ Full Range Shown Here

Part Number	BSPP Female	Tube O.D	Price
SN02/03	1/8"	3/16"	1.67
SN04/04	1/4"	1/4"	2.87
SN04/05	1/4"	5/16"	2.67
SN06/06	3/8"	3/8"	3.20
SN08/08	1/2"	1/2"	4.40
SN12/12	3/4"	3/4"	7.46

**Male 90 deg Hosetail BSPT**



BI QC: 1323



▶▶▶ Full Range Shown Here

Part Number	BSPT Male	Hosetail	Price
MHC02/0490	1/8"	1/4" (6)	4.13
MHC02/0590	1/8"	5/16" (8)	4.99
MHC02/0690	1/8"	3/8" (10)	4.99
MHC04/0490	1/4"	1/4" (6)	6.67
MHC04/0590	1/4"	5/16" (8)	5.75
MHC04/0690	1/4"	3/8" (10)	3.98
MHC04/0890	1/4"	1/2" (12)	7.09
MHC06/0490	3/8"	1/4" (6)	4.99
MHC06/0590	3/8"	5/16" (8)	4.61
MHC06/0690	3/8"	3/8" (10)	5.33
MHC06/0890	3/8"	1/2" (12)	10.37
MHC08/0590	1/2"	5/16" (8)	9.15
MHC08/0690	1/2"	3/8" (10)	7.09
MHC08/0890	1/2"	1/2" (12)	7.52

**Male 90 deg Swept Hosetail BSPT**



AX QC: 1324



▶▶▶ 1 More Variant available online, or Call Us

Part Number	BSPT Male	Hosetail	Price
MH02/0590	1/8"	5/16" (8)	19.82
MH04/0490	1/4"	1/4" (6)	21.13
MH04/0590	1/4"	5/16" (8)	21.13
MH04/0690	1/4"	3/8" (10)	21.42
MH06/0590	3/8"	5/16" (8)	27.97

**Female 90 deg Hosetail BSPP**



AX QC: 1325



▶▶▶ Full Range Shown Here

Part Number	BSPP Female	Hosetail	Price
FFH04/0590	1/4"	5/16" (8)	6.08
FFH04/0690	1/4"	3/8" (10)	4.99
FFH06/0690	3/8"	3/8" (10)	8.73
FFH06/0890	3/8"	1/2" (12)	9.15

See our full ranges of Hose and Tube in Section 12

**Female 90 deg Hosetail Coned BSPP**



BI QC: 1326



▶▶▶ 1 More Variant available online, or Call Us

Part Number	BSPP Female	Hosetail	Price
FHC04/0390	1/4"	3/16" (5)	20.15
FHC04/0490	1/4"	1/4" (6)	20.15
FHC04/0590	1/4"	5/16" (8)	23.19
FHC04/0690	1/4"	3/8" (10)	27.92
FHC06/0490	3/8"	1/4" (6)	29.01
FHC06/0590	3/8"	5/16" (8)	26.75
FHC06/0690	3/8"	3/8" (10)	29.95
FHC08/0690	1/2"	3/8" (10)	32.16
FHC08/0890	1/2"	1/2" (12)	32.16

**Female 90 deg Hosetail Coned BSPP Nickel Plated**



DN QC: 1327



▶▶▶ Full Range Shown Here

Part Number	BSPP Female	Hosetail	Price
FHC04/0490NP	1/4"	1/4" (6)	3.30
FHC04/0590NP	1/4"	5/16" (8)	3.30
FHC06/0690NP	3/8"	3/8" (10)	4.56
FHC08/0690NP	1/2"	3/8" (10)	7.23
FHC08/0890NP	1/2"	1/2" (13)	5.74
FHC12/1090NP	3/4"	5/8" (16)	7.52
FHC12/1290NP	3/4"	3/4" (19)	9.64
FHC16/1690NP	1"	1" (25)	18.33

**Female 90 deg Hosetail Flat BSPP**



DN QC: 1328



▶▶▶ 3 More Variants available online, or Call Us

Part Number	BSPP Female	Hosetail	Price
FHW06/0690NP	3/8"	3/8" (10)	4.48
FHW08/0690NP	1/2"	3/8" (10)	4.64
FHW08/0890NP	1/2"	1/2" (12)	5.90
FHW08/1090NP	1/2"	5/8" (16)	7.43
FHW12/0890NP	3/4"	1/2" (12)	7.04
FHW12/1290NP	3/4"	3/4" (19)	10.30
FHW16/1690NP	1"	1" (25)	15.02

**Hose Repair Connector**



CB QC: 1332



▶▶▶ Full Range Shown Here

Part Number	Hosetail (1)	Hosetail (2)	Price
HRC02/02	1/8" (3)	1/8" (3)	1.29
HRC03/03	3/16" (5)	3/16" (5)	1.99
HRC04/04	1/4" (6)	1/4" (6)	1.03
HRC05/05	5/16" (8)	5/16" (8)	1.03
HRC06/04	3/8" (10)	1/4" (6)	1.19
HRC06/06	3/8" (10)	3/8" (10)	1.13
HRC08/04	1/2" (12)	1/4" (6)	2.09
HRC08/05	1/2" (12)	5/16" (8)	2.09
HRC08/06	1/2" (12)	3/8" (10)	2.73
HRC08/08	1/2" (12)	1/2" (12)	1.59
HRC10/06	5/8" (16)	3/8" (10)	1.99
HRC10/08	5/8" (16)	1/2" (12)	2.55
HRC10/10	5/8" (16)	5/8" (16)	2.09
HRC12/06	3/4" (19)	3/8" (10)	4.78
HRC12/08	3/4" (19)	1/2" (12)	4.78
HRC12/10	3/4" (19)	5/8" (16)	4.78
HRC12/12	3/4" (19)	3/4" (19)	3.83
HRC16/12	1" (25)	3/4" (19)	7.98
HRC16/16	1" (25)	1" (25)	7.17
HRC20/20	1.1/4" (32)	1.1/4" (32)	16.05
HRC24/24	1.1/2" (38)	1.1/2" (38)	31.06
HRC32/32	2" (50)	2" (50)	65.81

**Hose Repair Connector - Steel**



AD QC: 1333



▶▶▶ Full Range Shown Here

Part Number	Hosetail	Price
SHRC04/04	1/4" (6)	1.07
SHRC05/05	5/16" (8)	1.07
SHRC06/06	3/8" (10)	1.18
SHRC08/08	1/2" (12)	1.58

**Hose Repair Connector - Steel (Barrel Type)**



BZ QC: 1334



Full Range Shown Here

Part Number	Hosetail	Price
SHRC12/12	3/4" (19)	4.70
SHRC16/16	1" (25)	3.05
SHRC20/20	1.1/4" (32)	4.08
SHRC24/24	1.1/2" (38)	8.71
SHRC32/32	2" (50)	6.69
SHRC40/40	2.1/2" (63)	25.56
SHRC48/48	3" (75)	15.66
SHRC64/64	4" (100)	28.38

**Lugged Hose Repair Connector**



DQ QC: 1331

3 More Variants available online, or Call Us

Part Number	Hosetail	Price
LFHRC12/12	3/4" (19)	5.81

**Bulkhead Straight Hose Adaptor**



DE QC: 1335



5 More Variants available online, or Call Us

Part Number	Hosetail (1)	Hosetail (2)	Price
15040-4-4	4mm	4mm	1.62

**Bulkhead Elbow Hose Adaptor**



DE QC: 1336



3 More Variants available online, or Call Us

Part Number	Hosetail	Price
15130-2	2mm	2.71

**Tee Hose Repair Connector**



AX QC: 1339



Full Range Shown Here

Part Number	Hosetail	Price
HRC03	3/16" (5)	5.74
HRC04	1/4" (6)	2.99
HRC05	5/16" (8)	2.77
HRC06	3/8" (10)	2.23
HRC08	1/2" (12)	3.95
HRC12	3/4" (19)	8.65

**Y Hose Repair Connector**



BD QC: 1340



Full Range Shown Here

Part Number	Hosetail	Price
HRCY03	3/16" (5)	2.70
HRCY04	1/4" (6)	2.86
HRCY05	5/16" (8)	2.86
HRCY06	3/8" (10)	3.88
HRCY08	1/2" (12)	6.44

**Cross Hose Repair Connector**



CV QC: 1341



1 More Variant available online, or Call Us

Part Number	Hosetail	Price
HRCX04	1/4" (6)	7.01
HRCX05	5/16" (8)	7.72
HRCX06	3/8" (10)	8.55

**Metric Stand Pipe**



DN QC: 1338

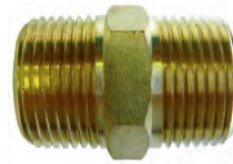
2 More Variants available online, or Call Us

Part Number	Stand Pipe	Hosetail	Price
CL15-10	15mm	10mm	3.20
CL15-13	15mm	13mm	2.75

Product

Connectors BSPT/BSPP/NPT/Metric

**Equal Connector BSPT**



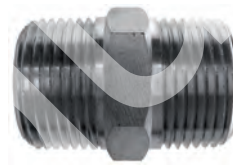
CF QC: 1342



Full Range Shown Here

Part Number	BSPT Male	Price
EC02/02	1/8"	0.58
EC04/04	1/4"	0.68
EC06/06	3/8"	1.73
EC08/08	1/2"	1.68
EC12/12	3/4"	3.15
EC16/16	1"	5.05
EC20/20	1.1/4"	10.42
EC24/24	1.1/2"	13.74
EC32/32	2"	15.78
EC40/40	2.1/2"	27.84
EC48/48	3"	44.73

**Equal Connector BSPT Nickel Plated**



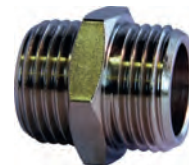
CF QC: 4037



2 More Variants available online, or Call Us

Part Number	BSPT Male	Price
EC02/02NP	1/8"	0.66
EC04/04NP	1/4"	0.78
EC06/06NP	3/8"	1.98
EC08/08NP	1/2"	1.94
EC12/12NP	3/4"	3.63
EC16/16NP	1"	5.80
EC20/20NP	1.1/4"	11.97

**Aignep Equal Connector BSPP Nickel Plated**



DE QC: 1343



1 More Variant available online, or Call Us

Part Number	BSPP Male	Price
ECPA02/02NP	1/8"	0.90
ECPA04/04NP	1/4"	1.38
ECPA06/06NP	3/8"	1.86
ECPA08/08NP	1/2"	3.00

**Equal Connector BSPP Coned x BSPT**



AX QC: 1344



Full Range Shown Here

Part Number	BSPP Male	BSPT Male	Price
ECPT02/02	1/8"	1/8"	1.32
ECPT04/04	1/4"	1/4"	1.68
ECPT06/06	3/8"	3/8"	2.04
ECPT08/08	1/2"	1/2"	2.53
ECPT12/12	3/4"	3/4"	5.01
ECPT16/16	1"	1"	14.76
ECPT20/20	1.1/4"	1.1/4"	27.41
ECPT24/24	1.1/2"	1.1/2"	32.79
ECPT32/32	2"	2"	46.67

**Equal Connector BSPT x NPT**



AX QC: 1345



Full Range Shown Here

Part Number	BSPT Male	NPT Male	Price
ECBN02/02	1/8"	1/8"	1.03
ECBN04/04	1/4"	1/4"	1.46
ECBN06/06	3/8"	3/8"	3.02
ECBN08/08	1/2"	1/2"	3.21
ECBN12/12	3/4"	3/4"	7.61
ECBN16/16	1"	1"	14.24

**Equal Connector NPT**



AX QC: 1346



Full Range Shown Here

Part Number	NPT Male	Price
ECN02/02	1/8"	0.97
ECN04/04	1/4"	1.28
ECN06/06	3/8"	1.67
ECN08/08	1/2"	2.58
ECN12/12	3/4"	3.64
ECN16/16	1"	7.18

**Equal Connector Metric**



AX QC: 1347



Full Range Shown Here

Part Number	Metric Male	Price
ECM5	M5x0.8	0.75
ECM6	M6x1.0	1.29
ECM8	M8x1.0	1.35
ECM10	M10x1.0	1.42
ECM12	M12x1.5	1.83
ECM14	M14x1.5	1.91
ECM16	M16x1.5	2.56
ECM18	M18x1.5	3.17
ECM20	M20x1.5	3.98
ECM22	M22x1.5	4.08
ECM24	M24x1.5	5.64
ECM26	M26x1.5	5.22
ECM28	M28x1.5	7.17

**Double Bodied Union Coned BSPP**



DR QC: 1348



Full Range Shown Here

Part Number	BSPP Male (1)	BSPP Male (2)	Price
DB02/02	1/8"	1/8"	1.52
DB04/02	1/4"	1/8"	2.67
DB04/04	1/4"	1/4"	1.96
DB06/02	3/8"	1/8"	2.41
DB06/04	3/8"	1/4"	2.60
DB06/06	3/8"	3/8"	2.66
DB08/04	1/2"	1/4"	3.30
DB08/06	1/2"	3/8"	3.37
DB08/08	1/2"	1/2"	3.45
DB12/06	3/4"	3/8"	6.05
DB12/08	3/4"	1/2"	5.87
DB12/12	3/4"	3/4"	11.74
DB16/06	1"	3/8"	11.03
DB16/08	1"	1/2"	11.24
DB16/12	1"	3/4"	12.41
DB16/16	1"	1"	20.43
DB20/16	1.1/4"	1"	33.88
DB20/20	1.1/4"	1.1/4"	34.57
DB24/20	1.1/2"	1.1/4"	42.55
DB24/24	1.1/2"	1.1/2"	42.94
DB32/24	2"	1.1/2"	62.03
DB32/32	2"	2"	60.58

**Equal Double Bodied Union Flat Face BSPP**



DR QC: 1349



Full Range Shown Here

Part Number	BSPP Male	Price
DB02/02FF	1/8"	1.48
DB04/04FF	1/4"	1.97
DB06/06FF	3/8"	2.66
DB08/08FF	1/2"	3.71
DB12/12FF	3/4"	6.84
DB16/16FF	1"	12.85

**Equal Bulkhead Connector Coned BSPP**



DR QC: 1350



Full Range Shown Here

Part Number	BSPP Male	Price
BH02/02	1/8"	2.86
BH04/04	1/4"	3.11
BH06/06	3/8"	4.32
BH08/08	1/2"	8.64
BH12/12	3/4"	13.66
BH16/16	1"	20.36
BH20/20	1.1/4"	48.54
BH24/24	1.1/2"	41.34
BH32/32	2"	91.70

**Equal Barrel Nipple BSPT**



DS QC: 1351



Full Range Shown Here

Part Number	BSPT Male	Price
ECB02/02	1/8"	0.71
ECB04/04	1/4"	1.03
ECB06/06	3/8"	1.83
ECB08/08	1/2"	3.25
ECB12/12	3/4"	4.53
ECB16/16	1"	7.22

**Breakable Joint BSPT**



DE QC: 1352



Full Range Shown Here

Part Number	BSPT Male (1)	BSPT Male (2)	Price
BR02/02	1/8"	1/8"	3.48
BR04/04	1/4"	1/4"	4.33
BR04/06	1/4"	3/8"	10.64
BR06/06	3/8"	3/8"	5.67
BR08/08	1/2"	1/2"	15.86
BR12/12	3/4"	3/4"	21.86
BR16/16	1"	1"	33.67



See our website for all the sizes we stock

## Reducing Connector BSPT



DU QC: 1353



&gt;&gt;&gt; Full Range Shown Here

Part Number	BSPT Male (1)	BSPT Male (2)	Price
RC04/02	1/4"	1/8"	1.58
RC06/02	3/8"	1/8"	1.58
RC06/04	3/8"	1/4"	1.58
RC08/02	1/2"	1/8"	2.43
RC08/04	1/2"	1/4"	2.55
RC08/06	1/2"	3/8"	3.72
RC12/04	3/4"	1/4"	4.08
RC12/06	3/4"	3/8"	7.55
RC12/08	3/4"	1/2"	4.68
RC16/08	1"	1/2"	7.60
RC16/12	1"	3/4"	7.58

## Aignep Reducing Connector BSPP Nickel Plated



DE QC: 1354



&gt;&gt;&gt; 1 More Variant available online, or Call Us

Part Number	BSPP Male (1)	BSPP Male (2)	Price
RCPA04/02NP	1/4"	1/8"	1.33
RCPA06/04NP	3/8"	1/4"	1.52
RCPA08/04NP	1/2"	1/4"	2.67
RCPA08/06NP	1/2"	3/8"	2.81
RCPA12/08NP	3/4"	1/2"	5.10

## Reducing Connector BSPP x BSPT



DR QC: 1355



&gt;&gt;&gt; Full Range Shown Here

Part Number	BSPP Male	BSPT Male	Price
RCPT02/04	1/8"	1/4"	1.59
RCPT04/02	1/4"	1/8"	2.06
RCPT04/06	1/4"	3/8"	2.23
RCPT04/08	1/4"	1/2"	2.89
RCPT06/04	3/8"	1/4"	2.99
RCPT06/08	3/8"	1/2"	3.05
RCPT08/04	1/2"	1/4"	3.82
RCPT08/06	1/2"	3/8"	3.91
RCPT08/12	1/2"	3/4"	4.97
RCPT12/06	3/4"	3/8"	6.98
RCPT12/08	3/4"	1/2"	7.14
RCPT16/08	1"	1/2"	12.76
RCPT16/12	1"	3/4"	13.53

## Reducing Connector NPT



AX QC: 1356



&gt;&gt;&gt; Full Range Shown Here

Part Number	NPT Male (1)	NPT Male (2)	Price
RCN04/02	1/4"	1/8"	1.29
RCN06/02	3/8"	1/8"	1.83
RCN06/04	3/8"	1/4"	1.86
RCN08/02	1/2"	1/8"	2.86
RCN08/04	1/2"	1/4"	3.00
RCN08/06	1/2"	3/8"	3.07
RCN12/04	3/4"	1/4"	5.18
RCN12/06	3/4"	3/8"	5.23
RCN12/08	3/4"	1/2"	10.07
RCN16/08	1"	1/2"	8.82
RCN16/12	1"	3/4"	8.82

## Equal Connector BSPT x BSPP



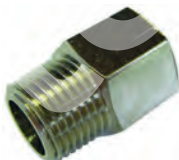
AX QC: 1357



&gt;&gt;&gt; Full Range Shown Here

Part Number	BSPT Male	BSPP Female	Price
MFEM5	M5	M5	0.68
MFE02/02	1/8"	1/8"	1.03
MFEU04/02	1/4" UNF	1/8"	2.43
MFE04/04	1/4"	1/4"	1.34
MFE06/06	3/8"	3/8"	2.15
MFE08/08	1/2"	1/2"	4.80
MFE12/12	3/4"	3/4"	6.15
MFE16/16	1"	1"	10.80

## Equal Connector BSPT x BSPP Nickel Plated



AX QC: 1358



&gt;&gt;&gt; 2 More Variants available online, or Call Us

Part Number	BSPT Male	BSPP Female	Price
MFE02/02NP	1/8"	1/8"	1.19
MFE04/04NP	1/4"	1/4"	1.53
MFE06/06NP	3/8"	3/8"	2.47
MFE08/08NP	1/2"	1/2"	5.79
MFE16/16NP	1"	1"	12.45

## Equal Swivel Connector BSPT x BSPP Cone Seat



CQ QC: 1359

&gt;&gt;&gt; Full Range Shown Here

Part Number	BSPT Male	BSPP Female	Price
MFESWC02	1/8"	1/8"	9.44
MFESWC04	1/4"	1/4"	20.07
MFESWC06	3/8"	3/8"	17.89
MFESWC08	1/2"	1/2"	14.95

## Equal Swivel Connector BSPT x BSPP Cone Seat Nickel Plated



DE QC: 1360



&gt;&gt;&gt; Full Range Shown Here

Part Number	BSPT Male	BSPP Female	Price
MFESW02	1/8"	1/8"	2.52
MFESW04	1/4"	1/4"	2.91
MFESW06	3/8"	3/8"	3.90

## Extended Male x Female Adaptor BSPP Nickel Plated



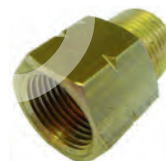
DE QC: 1361



&gt;&gt;&gt; 1 More Variant available online, or Call Us

Part Number	BSPP Male	BSPP Female	Length	Price
MFEEA02/02-L42NP	1/8"	1/8"	42mm	2.38
MFEEA04/04-L35NP	1/4"	1/4"	35mm	2.29

## Equal Connector - NPT



AX QC: 1362



&gt;&gt;&gt; Full Range Shown Here

Part Number	NPT Male	NPT Female	Price
MFEN02/02	1/8"	1/8"	1.33
MFEN04/04	1/4"	1/4"	1.65
MFEN06/06	3/8"	3/8"	2.48
MFEN08/08	1/2"	1/2"	3.78
MFEN12/12	3/4"	3/4"	6.86
MFEN16/16	1"	1"	11.78

## Reducer BSPT x BSPP &amp; Metric



AX QC: 1363



&gt;&gt;&gt; Full Range Shown Here

Part Number	BSPT Male	BSPP Female	Price
MFRM5/02	M5	1/8"	1.09
MFRM5/04	M5	1/4"	0.88
MFRM6/02	M6	1/8"	1.09
MFRM6/04	M6	1/4"	2.28
MFR02/04	1/8"	1/4"	2.58
MFR02/06	1/8"	3/8"	2.58
MFR04/06	1/4"	3/8"	2.58
MFR04/08	1/4"	1/2"	2.67
MFR06/08	3/8"	1/2"	4.08
MFR08/12	1/2"	3/4"	4.91
MFR12/16	3/4"	1"	7.90



**Reducer BSPT x BSPP Nickel Plated**



DV QC: 4038



Full Range Shown Here

Part Number	BSPT Male	BSPP Female	Price
MFR02/04NP	1/8"	1/4"	2.29
MFR02/06NP	1/8"	3/8"	2.28
MFR04/06NP	1/4"	3/8"	2.28
MFR04/08NP	1/4"	1/2"	2.36
MFR06/08NP	3/8"	1/2"	3.60
MFR08/12NP	1/2"	3/4"	4.33
MFR12/16NP	3/4"	1"	6.98

**Reducer NPT**



AX QC: 1364



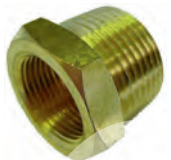
Full Range Shown Here

Part Number	NPT Male	NPT Female	Price
MFRN02/04	1/8"	1/4"	2.31
MFRN02/06	1/8"	3/8"	2.67
MFRN04/06	1/4"	3/8"	2.67
MFRN04/08	1/4"	1/2"	2.73
MFRN06/08	3/8"	1/2"	4.03
MFRN08/12	1/2"	3/4"	7.49
MFRN12/16	3/4"	1"	11.51

Product

► Bushes BSPT/BSPP/NPT/Metric

**Bush BSPT/BSPP/Metric**



AX QC: 1365



Full Range Shown Here

Part Number	BSPT Male	BSPP Female	Price
MFB02/M5	1/8"	M5x0.8	0.72
MFB04/02	1/4"	1/8"	0.66
MFB06/02	3/8"	1/8"	0.87
MFB06/04	3/8"	1/4"	1.55
MFB08/02	1/2"	1/8"	2.58
MFB08/04	1/2"	1/4"	2.58
MFB08/06	1/2"	3/8"	2.58
MFB12/02	3/4"	1/8"	2.76
MFB12/04	3/4"	1/4"	2.11
MFB12/06	3/4"	3/8"	2.11
MFB12/08	3/4"	1/2"	2.94
MFB16/04	1"	1/4"	4.15
MFB16/06	1"	3/8"	4.15
MFB16/08	1"	1/2"	7.86
MFB16/12	1"	3/4"	7.86
MFB20/12	1.1/4"	3/4"	10.81
MFB20/16	1.1/4"	1"	15.73
MFB24/20	1.1/2"	1.1/4"	13.85
MFB32/20	2"	1.1/4"	17.66
MFB32/24	2"	1.1/2"	48.56

**Bush BSPT/BSPP/Metric Nickel Plated**



CB QC: 1366



Full Range Shown Here

Part Number	BSPT Male	BSPP Female	Price
MFB02/M5NP	1/8"	M5x0.8	0.71
MFB04/02NP	1/4"	1/8"	0.68
MFB06/02NP	3/8"	1/8"	0.94
MFB06/04NP	3/8"	1/4"	0.89
MFB08/02NP	1/2"	1/8"	1.49
MFB08/04NP	1/2"	1/4"	1.43
MFB08/06NP	1/2"	3/8"	1.32
MFB12/02NP	3/4"	1/8"	3.00
MFB12/04NP	3/4"	1/4"	2.82
MFB12/06NP	3/4"	3/8"	3.18
MFB12/08NP	3/4"	1/2"	2.32
MFB16/04NP	1"	1/4"	4.93
MFB16/06NP	1"	3/8"	4.93
MFB16/08NP	1"	1/2"	5.51
MFB16/12NP	1"	3/4"	5.29

**Bush BSPP**



AX QC: 1367



1 More Variant available online, or Call Us

Part Number	BSPP Male	BSPP Female	Price
MFBP04/02	1/4"	1/8"	1.33
MFBP06/04	3/8"	1/4"	1.83
MFBP08/02	1/2"	1/8"	2.82
MFBP08/04	1/2"	1/4"	2.67
MFBP08/06	1/2"	3/8"	2.56
MFBP12/02	3/4"	1/8"	5.31
MFBP12/04	3/4"	1/4"	5.18
MFBP12/06	3/4"	3/8"	5.11
MFBP12/08	3/4"	1/2"	5.10
MFBP16/04	1"	1/4"	8.45
MFBP16/06	1"	3/8"	8.45
MFBP16/08	1"	1/2"	8.43
MFBP16/12	1"	3/4"	8.38

**Aignep Bush BSPP Nickel Plated**



DE QC: 1368



4 More Variants available online, or Call Us

Part Number	BSPP Male	BSPP Female	Price
MFBPA02/M5NP	1/8"	M5	0.91
MFBPA04/02NP	1/4"	1/8"	1.29
MFBPA08/04NP	1/2"	1/4"	3.18

**Bush NPT**



AX QC: 1369



Full Range Shown Here

Part Number	NPT Male	NPS Female	Price
MFBN04/02	1/4"	1/8"	1.20
MFBN06/02	3/8"	1/8"	1.59
MFBN06/04	3/8"	1/4"	1.59
MFBN08/02	1/2"	1/8"	2.31
MFBN08/04	1/2"	1/4"	3.50
MFBN08/06	1/2"	3/8"	2.12
MFBN12/04	3/4"	1/4"	3.97
MFBN12/06	3/4"	3/8"	3.50
MFBN12/08	3/4"	1/2"	3.91
MFBN16/04	1"	1/4"	6.24
MFBN16/06	1"	3/8"	5.93
MFBN16/08	1"	1/2"	5.92
MFBN16/12	1"	3/4"	5.92

**Bush Metric/BSPP**



AX QC: 1370



Full Range Shown Here

Part Number	Metric Male	Metric Female	Price
MFBM16/M12	M16x1.5	M12x1.5	2.62
MFBM16/04	M16x1.5	1/4" BSPP	2.66
MFBM18/04	M18x1.5	1/4" BSPP	2.56
MFBM20/04	M20x1.5	1/4" BSPP	3.05
MFBM20/M16	M20x1.5	M16x1.5	4.32
MFBM22/04	M22x1.5	1/4" BSPP	3.91
MFBM22/06	M22x1.5	3/8" BSPP	4.97
MFBM22/M16	M22x1.5	M16x1.5	4.97

**For Galv Bushes see Section 9**

**For Hydraulic Bushes see Section 5**

**Shoulderless Bush BSPP**



AX QC: 1371



Full Range Shown Here

Part Number	BSPP Male	BSPP Female	Price
MFBS04/02	1/4"	1/8"	1.65
MFBS06/02	3/8"	1/8"	1.16
MFBS06/04	3/8"	1/4"	1.16
MFBS08/04	1/2"	1/4"	1.42
MFBS08/06	1/2"	3/8"	1.42
MFBS12/06	3/4"	3/8"	2.48
MFBS12/08	3/4"	1/2"	2.48
MFBS16/08	1"	1/2"	3.96
MFBS16/12	1"	3/4"	3.70

**Bulkhead Connector BSPP/Metric**



DO QC: 1372



Full Range Shown Here

Part Number	Metric Male	BSPP Female	Max Plate (mm)	Price
BHMM5	M10x1.0	M5	7	1.76
BHM02	M16x1.5	1/8"	10	3.75
BHM04	M20x1.5	1/4"	16	3.13
BHM06	M26x1.5	3/8"	16	4.39
BHM08	M28x1.5	1/2"	21	6.33
BHM12	M34x1.5	3/4"	23	15.95
BHM16	M42x1.5	1"	25	26.33

**Bulkhead BSPP/Metric Nickel Plated**



DW QC: 1373



Full Range Shown Here

Part Number	Metric Male	BSPP Female	Max Plate (mm)	Price
BHMM5NP	M10x1.5	M5	7	1.61
BHM02NP	M16x1.5	1/8"	10	4.48
BHM04NP	M20x1.5	1/4"	16	3.59
BHM06NP	M26x1.5	3/8"	16	5.04
BHM08NP	M28x1.5	1/2"	21	7.27
BHM12NP	M34x1.5	3/4"	23	18.32
BHM16NP	M42x1.5	1"	25	30.30

Sockets BSPP/NPT/Metric

**Equal Socket BSPP**



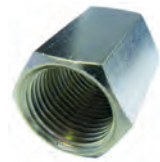
AX QC: 1374



Full Range Shown Here

Part Number	BSPP Female	Price
FFA02/02	1/8"	0.82
FFA04/04	1/4"	2.04
FFA06/06	3/8"	2.50
FFA08/08	1/2"	2.61
FFA12/12	3/4"	6.76
FFA16/16	1"	6.45
FFA20/20	1.1/4"	26.97
FFA24/24	1.1/2"	31.61
FFA32/32	2"	35.06
FFA40/40	2.1/2"	36.03
FFA48/48	3"	39.73
FFA64/64	4"	204.59

**Equal Socket BSPP Nickel Plated**



AX QC: 1375



Full Range Shown Here

Part Number	BSPP Female	Price
FFA02/02NP	1/8"	0.88
FFA04/04NP	1/4"	2.17
FFA06/06NP	3/8"	2.79
FFA08/08NP	1/2"	2.79
FFA12/12NP	3/4"	7.20
FFA16/16NP	1"	6.88

**Aignep Equal Socket BSPP & Metric**



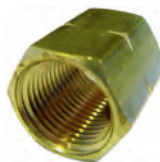
DE QC: 1376



1 More Variant available online, or Call Us

Part Number	BSPP Female	Price
FFSA02/02NP	1/8"	1.10
FFSA04/04NP	1/4"	1.48
FFSA06/06NP	3/8"	2.29
FFSA08/08NP	1/2"	3.81

**Equal Socket NPS**



AX QC: 1377



Full Range Shown Here

Part Number	NPS Female	Price
FFAN02/02	1/8"	1.21
FFAN04/04	1/4"	3.70
FFAN06/06	3/8"	2.22
FFAN08/08	1/2"	3.01
FFAN12/12	3/4"	6.30
FFAN16/16	1"	9.79



See our website for all the sizes we stock

**Equal Socket Metric**



AX QC: 1378



1 More Variant available online, or Call Us

Part Number	Metric Female (1)	Metric Female (2)	Price
FFAM5	M5x0.8	M5x0.8	1.15
FFAM6	M6x1.0	M6x1.0	2.76
FFAM8	M8x1.0	M8x1.0	1.53
FFAM10	M10x1.0	M10x1.0	1.53
FFAM12	M12x1.5	M12x1.5	1.66
FFAM14	M14x1.5	M14x1.5	2.10
FFAM16	M16x1.5	M16x1.5	3.05
FFAM18	M18x1.5	M18x1.5	4.02
FFAM20	M20x1.5	M20x1.5	4.39
FFAM22	M22x1.5	M22x1.5	8.82
FFAM24	M24x1.5	M24x1.5	5.92
FFAM28	M28x1.5	M28x1.5	7.90
FFAM30	M30x1.5	M30x1.5	8.69

**Equal Female Breakable Joint BSPP**



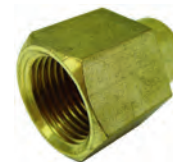
DX QC: 1379



2 More Variants available online, or Call Us

Part Number	BSPP Female	Price
BRFF08/08	1/2"	17.34
BRFF12/12	3/4"	22.56
BRFF16/16	1"	28.37
BRFF32/32	2"	77.90

**Reducing Socket BSPP**



AX QC: 1380



Full Range Shown Here

Part Number	BSPP Female (1)	BSPP Female (2)	Price
FFR04/02	1/4"	1/8"	1.70
FFR06/02	3/8"	1/8"	2.42
FFR06/04	3/8"	1/4"	2.63
FFR08/04	1/2"	1/4"	3.81
FFR08/06	1/2"	3/8"	4.60
FFR12/04	3/4"	1/4"	6.76
FFR12/06	3/4"	3/8"	6.94
FFR12/08	3/4"	1/2"	7.81
FFR16/06	1"	3/8"	11.13
FFR16/08	1"	1/2"	12.60
FFR16/12	1"	3/4"	12.40

**Reducing Socket BSPP Nickel Plated**



AX QC: 1381



Full Range Shown Here

Part Number	BSPP Female (1)	BSPP Female (2)	Price
FFR04/02NP	1/4"	1/8"	1.96
FFR06/02NP	3/8"	1/8"	2.76
FFR06/04NP	3/8"	1/4"	3.05
FFR08/04NP	1/2"	1/4"	4.39
FFR08/06NP	1/2"	3/8"	5.29
FFR12/04NP	3/4"	1/4"	7.79
FFR12/06NP	3/4"	3/8"	7.98
FFR12/08NP	3/4"	1/2"	8.96
FFR16/06NP	1"	3/8"	12.82
FFR16/08NP	1"	1/2"	14.48
FFR16/12NP	1"	3/4"	14.25

**Product** ▶ Plugs Caps & Lock Nuts

**Hexagonal Hollow Plug BSPT**



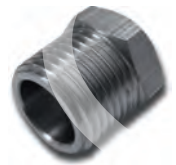
AX QC: 1382



Full Range Shown Here

Part Number	BSPT Male	Price
PBT02	1/8"	1.33
PBT04	1/4"	1.07
PBT06	3/8"	1.47
PBT08	1/2"	3.63
PBT10	5/8"	3.50
PBT12	3/4"	4.60
PBT14	7/8"	4.86
PBT16	1"	5.68
PBT20	1.1/4"	13.14
PBT24	1.1/2"	27.34
PBT32	2"	34.19

**Hexagonal Hollow Plug BSPT Nickel Plated**



AX QC: 1383



1 More Variant available online, or Call Us

Part Number	BSPT Male	Price
PBT02NP	1/8"	1.59
PBT04NP	1/4"	1.21
PBT06NP	3/8"	1.70
PBT08NP	1/2"	4.33
PBT12NP	3/4"	5.51
PBT16NP	1"	6.52
PBT20NP	1.1/4"	15.09

**Hexagonal Solid Plug BSPT**



AX QC: 1384



Full Range Shown Here

Part Number	BSPT Male	Price
PBT02S	1/8"	1.01
PBT04S	1/4"	1.38
PBT06S	3/8"	1.92
PBT08S	1/2"	2.73
PBT10S	5/8"	4.55
PBT12S	3/4"	3.88
PBT14S	7/8"	6.33
PBT16S	1"	7.41
PBT20S	1.1/4"	20.70
PBT24S	1.1/2"	35.66
PBT32S	2"	44.60

**Hexagonal Solid Plug BSPT Nickel Plated**



AX QC: 1385



2 More Variants available online, or Call Us

Part Number	BSPT Male	Price
PBT02SNP	1/8"	1.15
PBT04SNP	1/4"	1.59
PBT06SNP	3/8"	2.22
PBT08SNP	1/2"	3.13
PBT10SNP	5/8"	3.59
PBT12SNP	3/4"	5.17

**Hexagonal Hollow Plug BSPP**



AX QC: 1386



Full Range Shown Here

Part Number	BSPP Male	Price
PBP02	1/8"	0.77
PBP04	1/4"	1.35
PBP06	3/8"	1.47
PBP08	1/2"	3.18
PBP10	5/8"	2.56
PBP12	3/4"	3.88
PBP16	1"	8.35
PBP20	1.1/4"	21.32
PBP24	1.1/2"	27.90
PBP32	2"	24.77

**Hexagonal Hollow Plug BSPP Nickel Plated**



AX QC: 1387



1 More Variant available online, or Call Us

Part Number	BSPP Male	Price
PBP02NP	1/8"	0.88
PBP04NP	1/4"	1.64
PBP06NP	3/8"	1.70
PBP08NP	1/2"	3.82
PBP12NP	3/4"	4.45
PBP16NP	1"	9.59

**Hexagonal Solid Plug BSPP**



AX QC: 1388



Full Range Shown Here

Part Number	BSPP Male	Price
PBP02S	1/8"	1.01
PBP04S	1/4"	1.38
PBP06S	3/8"	1.92
PBP08S	1/2"	2.73
PBP10S	5/8"	3.33
PBP12S	3/4"	5.04
PBP16S	1"	13.23
PBP20S	1.1/4"	27.80
PBP24S	1.1/2"	36.37
PBP32S	2"	57.39

**Hexagonal Solid Plug BSPP Nickel Plated**



AX QC: 1389



2 More Variants available online, or Call Us

Part Number	BSPP Male	Price
PBP02SNP	1/8"	0.96
PBP04SNP	1/4"	1.28
PBP08SNP	1/2"	3.13
PBP12SNP	3/4"	5.79
PBP16SNP	1"	8.00

**Aignep Male Plug BSPP**

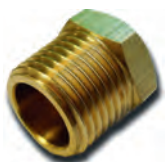


DE QC: 1390



3 More Variants available online, or Call Us

Part Number	BSPP Male	Price
PMPAM5NP	M5	0.81
PMPA04NP	1/4"	1.05
PMPA08NP	1/2"	2.33
PMPA12NP	3/4"	3.76

**Hexagonal Hollow Plug NPT**

DY QC: 1391



&gt;&gt;&gt; Full Range Shown Here

Part Number	NPT Male	Price
PBTN02	1/8"	0.77
PBTN04	1/4"	1.07
PBTN06	3/8"	1.83
PBTN08	1/2"	2.09
PBTN12	3/4"	3.44
PBTN16	1"	5.99
PBTN20	1.1/4"	15.15
PBTN24	1.1/2"	28.70
PBTN32	2"	41.10

**Hexagonal Solid Plug NPT**

DY QC: 1392



&gt;&gt;&gt; Full Range Shown Here

Part Number	NPT Male	Price
PBTN02S	1/8"	1.01
PBTN04S	1/4"	1.38
PBTN06S	3/8"	1.92
PBTN08S	1/2"	3.12
PBTN12S	3/4"	4.48
PBTN16S	1"	9.51
PBTN20S	1.1/4"	17.74
PBTN24S	1.1/2"	37.46
PBTN32S	2"	53.61

**Hexagonal Plug Metric**

DY QC: 1393



&gt;&gt;&gt; 1 More Variant available online, or Call Us

Part Number	Metric Male	Price
PBPM5	M5x0.8	0.69
PBPM6	M6x1.0	0.96
PBPM8	M8x1.0	1.10
PBPM10	M10x1.0	1.10
PBPM12	M12x1.5	1.21
PBPM14	M14x1.5	1.77
PBPM16	M16x1.5	1.92
PBPM18	M18x1.5	2.31
PBPM20	M20x1.5	2.47
PBPM22	M22x1.5	2.93
PBPM24	M24x1.5	3.40
PBPM26	M26x1.5	3.40
PBPM30	M30x1.5	4.80

**Flanged Plug BSPP**

DZ QC: 1394



&gt;&gt;&gt; Full Range Shown Here

Part Number	BSPP Male	Price
FP02	1/8"	2.12
FP04	1/4"	2.56
FP06	3/8"	2.83
FP08	1/2"	3.46
FP12	3/4"	4.72
FP16	1"	7.86
FP20	1.1/4"	11.48
FP24	1.1/2"	14.82
FP32	2"	22.85

**Square Headed Plug BSPP**

DQ QC: 1395



&gt;&gt;&gt; 3 More Variants available online, or Call Us

Part Number	BSPP Male	Price
QPBT04	1/4"	0.91
QPBT08	1/2"	2.04
QPBT12	3/4"	2.24
QPBT20	1.1/4"	6.50
QPBT24	1.1/2"	11.68

**Allen Key Plug BSPT**

DY QC: 1396



&gt;&gt;&gt; Full Range Shown Here

Part Number	BSPT Male	Price
AK02	1/8"	0.46
AK04	1/4"	1.29
AK06	3/8"	1.14
AK08	1/2"	1.58
AK12	3/4"	3.07
AK16	1"	5.92

**Allen Key Plug BSPT Nickel Plated**

DY QC: 1397



&gt;&gt;&gt; Full Range Shown Here

Part Number	BSPT Male	Price
AK02NP	1/8"	0.52
AK04NP	1/4"	1.48
AK06NP	3/8"	1.32
AK08NP	1/2"	1.79
AK12NP	3/4"	3.53
AK16NP	1"	6.82

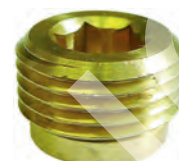
**Allen Key Plug BSPT Steel**

DY QC: 1398



&gt;&gt;&gt; Full Range Shown Here

Part Number	BSPT Male	Price
SAK02	1/8"	0.81
SAK04	1/4"	0.81
SAK06	3/8"	0.96
SAK08	1/2"	1.20

**Allen Key Plug BSPP**

DY QC: 1399



&gt;&gt;&gt; Full Range Shown Here

Part Number	BSPP Male	Price
AKP02	1/8"	0.49
AKP04	1/4"	0.88
AKP06	3/8"	1.03
AKP08	1/2"	1.77

**Allen Key Plug BSPP Nickel Plated**

DY QC: 1400



&gt;&gt;&gt; Full Range Shown Here

Part Number	BSPP Male	Price
AKP02NP	1/8"	0.55
AKP04NP	1/4"	0.66
AKP06NP	3/8"	0.87
AKP08NP	1/2"	1.38

**Allen Key Plug BSPP c/w O Ring**

DE QC: 1401



&gt;&gt;&gt; Full Range Shown Here

Part Number	BSPP Male	Price
AKC02	1/8"	0.81
AKC04	1/4"	0.91
AKC06	3/8"	1.33
AKC08	1/2"	2.33

### Allen Key Plug NPT



DY QC: 1402



Full Range Shown Here

Part Number	NPT Male	Price
AKN02	1/8"	0.77
AKN04	1/4"	1.21
AKN06	3/8"	1.21
AKN08	1/2"	1.59

### Allen Key Plug NPT Nickel Plated



DY QC: 1403



Full Range Shown Here

Part Number	NPT Male	Price
AKN02NP	1/8"	0.88
AKN04NP	1/4"	1.40
AKN06NP	3/8"	1.40
AKN08NP	1/2"	1.83

### Allen Key Plug Metric



DY QC: 1404



Full Range Shown Here

Part Number	Metric Male	Price
AKM8	M8x1.0	1.07
AKM10	M10x1.0	1.09
AKM12	M12x1.5	1.10
AKM14	M14x1.5	1.20
AKM16	M16x1.5	1.26
AKM18	M18x1.5	1.61
AKM20	M20x1.5	1.90
AKM22	M22x1.5	1.97
AKM24	M24x1.5	2.10
AKM26	M26x1.5	2.22

### Air Vents - Manually Operated

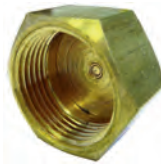


EA QC: 1405

Full Range Shown Here

Part Number	BSPP Male	Price
AV02	1/8"	1.01
AV04	1/4"	1.47
AV08	1/2"	1.86

### Female Cap BSPP



DY QC: 1407



Full Range Shown Here

Part Number	BSPP Female	Price
CAP02	1/8"	0.71
CAP04	1/4"	0.58
CAP06	3/8"	1.92
CAP08	1/2"	2.22
CAP12	3/4"	1.80
CAP16	1"	3.63
CAP20	1.1/4"	11.74
CAP24	1.1/2"	13.28
CAP32	2"	21.93

### Female Cap BSPP Nickel Plated



DY QC: 1408



2 More Variants available online, or Call Us

Part Number	BSPP Female	Price
CAP04NP	1/4"	0.65
CAP06NP	3/8"	2.22
CAP08NP	1/2"	2.55
CAP16NP	1"	4.16

### Locknut BSPP



AU QC: 1410



Full Range Shown Here

Part Number	BSPP Female	Equivalent	Price
LN02	1/8"	34022301	0.77
LN04	1/4"	34022302	0.96
LN06	3/8"	34022303	1.13
LN08	1/2"	34022304	1.41
LN10	5/8"	-	2.17
LN12	3/4"	34022306	3.59
LN14	7/8"	34022307	3.96
LN16	1"	34022308	4.22
LN20	1.1/4"	-	9.19
LN24	1.1/2"	-	17.10
LN32	2"	-	21.39

### Lock Nut BSPP Nickel Plated



DY QC: 1411



2 More Variants available online, or Call Us

Part Number	BSPP Female	Price
LN02NP	1/8"	0.88
LN04NP	1/4"	1.10
LN06NP	3/8"	1.29
LN08NP	1/2"	1.61
LN12NP	3/4"	4.14
LN14NP	7/8"	4.55
LN16NP	1"	4.86

### Locknut Metric



DC QC: 1412



2 More Variants available online, or Call Us

Part Number	Equivalent	Metric Female	Price
LN10	-	M10x1.0	0.96
LN12	36052001	M12x1.0	0.96
LN14	-	M14x1.0	2.41
LN15	36052003	M15x1.0	1.35
LN16	-	M16x1.5	1.35
LN18	36052005	M18x1.5	1.59
LN20	36052006	M20x1.5	1.59
LN22	-	M22x1.5	2.60
LN24	36052007	M24x1.5	2.60
LN26	-	M26x1.5	2.60
LN28	-	M28x1.5	3.43
LN30	36052008	M30x1.5	4.47
LN38	-	M38x1.5	6.26
LN42	-	M42x1.5	11.18

### Lock Nut Metric Nickel Plated



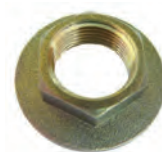
EC QC: 1413



5 More Variants available online, or Call Us

Part Number	Metric Female	Price
LN12NP	M12x1.0	1.10
LN15NP	M15x1.0	1.58
LN20NP	M20x1.5	1.83
LN26NP	M26x1.5	2.98
LN28NP	M28x1.5	3.94

### Flanged Back Nut BSPP



ED QC: 1414



2 More Variants available online, or Call Us

Part Number	BSPP Female	Price
FLN08	1/2"	1.35
FLN12	3/4"	1.91
FLN16	1"	2.69
FLN24	1.1/2"	3.20

## Product Elbows

## Equal Elbow BSPT Male x Male

EE QC: 1415



NPA

Full Range Shown Here

Part Number	BSPT Male	Price
MML02	1/8"	2.03
MML04	1/4"	2.98
MML06	3/8"	3.75
MML08	1/2"	6.02
MML12	3/4"	8.79
MML16	1"	14.54

## Equal Elbow BSPT Male x Male Nickel Plated

DE QC: 1416



NP

AIGNEP

Full Range Shown Here

Part Number	BSPT Male	Price
MML02NP	1/8"	2.20
MML04NP	1/4"	3.23
MML06NP	3/8"	4.00
MML08NP	1/2"	6.48
MML12NP	3/4"	9.85
MML16NP	1"	16.08

## Equal Elbow BSPT x BSPP

EE QC: 1417



NPA

1 More Variant available online, or Call Us

Part Number	BSPT Male	BSPP Female	Price
MFL02	1/8"	1/8"	2.22
MFL04	1/4"	1/4"	2.76
MFL06	3/8"	3/8"	3.94
MFL08	1/2"	1/2"	6.30
MFL12	3/4"	3/4"	8.13
MFL16	1"	1"	11.35
MFL20	1.1/4"	1.1/4"	16.24
MFL24	1.1/2"	1.1/2"	26.14
MFL32	2"	2"	43.85

## Equal Elbow BSPT x BSPP Nickel Plated

EI QC: 1418



NP

AIGNEP

1 More Variant available online, or Call Us

Part Number	BSPT Male	BSPP Female	Price
MFL02NP	1/8"	1/8"	1.75
MFL04NP	1/4"	1/4"	2.43
MFL06NP	3/8"	3/8"	3.12
MFL08NP	1/2"	1/2"	4.86
MFL12NP	3/4"	3/4"	8.06
MFL16NP	1"	1"	13.05

## Compact Elbow BSPT x BSPP

EJ QC: 1419



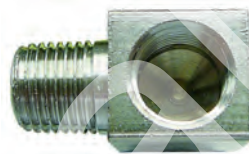
NPA

Full Range Shown Here

Part Number	BSPT Male	BSPP Female	Price
MFLC02	1/8"	1/8"	6.01
MFLC04	1/4"	1/4"	4.54
MFLC06	3/8"	3/8"	7.14
MFLC08	1/2"	1/2"	8.09

## Compact Elbow BSPT x BSPP Nickel Plated

DW QC: 1420



NP

Full Range Shown Here

Part Number	BSPT Male	BSPP Female	Price
MFLC02NP	1/8"	1/8"	7.21
MFLC04NP	1/4"	1/4"	4.78
MFLC06NP	3/8"	3/8"	8.17
MFLC08NP	1/2"	1/2"	9.32

## Equal Elbow NPT x NPT

AX QC: 1421



NPA

Full Range Shown Here

Part Number	NPT Male	NPT Female	Price
MFLN02	1/8"	1/8"	6.34
MFLN04	1/4"	1/4"	4.88
MFLN06	3/8"	3/8"	6.84
MFLN08	1/2"	1/2"	9.39
MFLN12	3/4"	3/4"	21.86
MFLN16	1"	1"	42.43

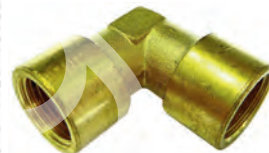


7

For Stainless Steel  
Hosesails and Adaptors  
see Section 7

## Equal Elbow Metric/BSPP Female

DW QC: 1422



NP

3 More Variants available online, or Call Us

Part Number	BSPP Female	Price
FEL02	1/8"	1.66
FEL04	1/4"	2.24
FEL06	3/8"	3.00
FEL08	1/2"	4.85
FEL12	3/4"	6.88
FEL16	1"	10.52
FEL24	1.1/2"	18.13
FEL32	2"	31.16
FEL40	2.1/2"	83.37
FEL64	4"	117.51

## Equal Elbow Metric/BSPP Female Nickel Plated

BI QC: 1423



NP

AIGNEP

1 More Variant available online, or Call Us

Part Number	BSPP Female	Price
FEL02NP	1/8"	1.83
FEL04NP	1/4"	2.57
FEL06NP	3/8"	3.45
FEL08NP	1/2"	5.54
FEL12NP	3/4"	8.06
FEL16NP	1"	13.05

**Wall Bracket BSPP Nickel Plated**



DE QC: 1424



Full Range Shown Here

Part Number	BSPP Female	Price
WALLB08	1/2"	9.95

**Equal Elbow NPT Female**



EK QC: 1425



4 More Variants available online, or Call Us

Part Number	NPT Female	Price
FELN08	1/2"	14.82
FELN12	3/4"	21.18

**45 deg Equal Elbow BSPT Male x BSPP Female**



CV QC: 1426



Full Range Shown Here

Part Number	BSPT Male	BSPP Female	Price
MFL0245	1/8"	1/8"	2.44
MFL0445	1/4"	1/4"	3.07

**45 deg Equal Elbow BSPP Female**



DQ QC: 1427



3 More Variants available online, or Call Us

Part Number	BSPP Female	Price
FEL0845	1/2"	6.06
FEL1245	3/4"	7.12
FEL2445	1.1/2"	20.12



**Equal Tee BSPT Male**



DW QC: 1428



Full Range Shown Here

Part Number	BSPT Male	Price
MET02	1/8"	2.98
MET04	1/4"	3.13
MET06	3/8"	3.57
MET08	1/2"	8.03
MET12	3/4"	13.05
MET16	1"	21.89

**Equal Tee BSPT Male Nickel Plated**



DE QC: 1429



1 More Variant available online, or Call Us

Part Number	BSPT Male	Price
MET02NP	1/8"	3.23
MET04NP	1/4"	3.62
MET06NP	3/8"	5.52
MET12NP	3/4"	12.33
MET16NP	1"	24.34

**Tee Male x Male x Female**



DW QC: 1430



Full Range Shown Here

Part Number	BSPT Male	BSPP Female	Price
MMFT02	1/8"	1/8"	2.34
MMFT04	1/4"	1/4"	3.15
MMFT06	3/8"	3/8"	4.59
MMFT08	1/2"	1/2"	7.26
MMFT12	3/4"	3/4"	13.37
MMFT16	1"	1"	22.31

**Tee Male x Male x Female Nickel Plated**



DE QC: 1431



Full Range Shown Here

Part Number	BSPT Male	BSPP Female	Price
MMFT02NP	1/8"	1/8"	2.67
MMFT04NP	1/4"	1/4"	3.71
MMFT06NP	3/8"	3/8"	5.52
MMFT08NP	1/2"	1/2"	9.05
MMFT12NP	3/4"	3/4"	14.96
MMFT16NP	1"	1"	24.87



16

For full range of Sealants Adhesives and Retainers see Section 16

**Tee Male x Female x Male**



DW QC: 1432



1 More Variant available online, or Call Us

Part Number	BSPT Male	BSPP Female	Price
MFMT02	1/8"	1/8"	2.23
MFMT04	1/4"	1/4"	3.05
MFMT08	1/2"	1/2"	7.34
MFMT12	3/4"	3/4"	13.90
MFMT16	1"	1"	22.31

**Tee Male x Female x Male Nickel Plated**



DE QC: 1433



1 More Variant available online, or Call Us

Part Number	BSPT Male	BSPP Female	Price
MFMT04NP	1/4"	1/4"	3.71
MFMT06NP	3/8"	3/8"	5.52
MFMT08NP	1/2"	1/2"	9.05
MFMT12NP	3/4"	3/4"	15.66
MFMT16NP	1"	1"	24.87

**Centre Leg Equal Tee Female x Female x Male**



DW QC: 1434



1 More Variant available online, or Call Us

Part Number	BSPT Male	BSPP Female	Price
MFT02	1/8"	1/8"	2.29
MFT04	1/4"	1/4"	3.21
MFT08	1/2"	1/2"	9.82
MFT12	3/4"	3/4"	13.53
MFT16	1"	1"	22.68

**Centre Leg Equal Tee Female x Female x Male Nickel Plated**

DE QC: 1435



&gt;&gt;&gt; Full Range Shown Here

Part Number	BSPT Male	BSPP Female	Price
MFT02NP	1/8"	1/8"	2.57
MFT04NP	1/4"	1/4"	3.48
MFT06NP	3/8"	3/8"	5.52
MFT08NP	1/2"	1/2"	10.63
MFT12NP	3/4"	3/4"	15.23
MFT16NP	1"	1"	25.45

**Equal Tee BSPP/Metric Nickel Plated**

BI QC: 1439



&gt;&gt;&gt; 1 More Variant available online, or Call Us

Part Number	BSPP Female	Price
FET02NP	1/8"	2.35
FET04NP	1/4"	3.40
FET06NP	3/8"	5.08
FET08NP	1/2"	10.63
FET12NP	3/4"	11.38
FET16NP	1"	18.97

**Equal 'Y' Branch BSPT x BSPP**

DW QC: 1443



&gt;&gt;&gt; 1 More Variant available online, or Call Us

Part Number	BSPT Male	BSPP Female	Price
MFY04	1/4"	1/4"	2.75
MFY06	3/8"	3/8"	4.55
MFY08	1/2"	1/2"	6.94

**Tee Female x Male x Female**

DW QC: 1436



&gt;&gt;&gt; Full Range Shown Here

Part Number	BSPT Male	BSPP Female	Price
FMFT02	1/8"	1/8"	2.23
FMFT04	1/4"	1/4"	3.05
FMFT06	3/8"	3/8"	4.24
FMFT08	1/2"	1/2"	7.34
FMFT12	3/4"	3/4"	13.63
FMFT16	1"	1"	22.63

**Equal Tee NPT**

AX QC: 1440



&gt;&gt;&gt; Full Range Shown Here

Part Number	NPT Female	Price
FETN02	1/8"	4.22
FETN04	1/4"	12.57
FETN08	1/2"	11.74
FETN12	3/4"	37.78
FETN16	1"	42.49

**Tee Female x Male x Female Nickel Plated**

DE QC: 1437



&gt;&gt;&gt; Full Range Shown Here

Part Number	BSPT Male	BSPP Female	Price
FMFT02NP	1/8"	1/8"	2.57
FMFT04NP	1/4"	1/4"	3.48
FMFT06NP	3/8"	3/8"	5.52
FMFT08NP	1/2"	1/2"	9.05
FMFT12NP	3/4"	3/4"	15.34
FMFT16NP	1"	1"	25.40

**Equal Tee BSPP/Metric**

DW QC: 1438



&gt;&gt;&gt; 1 More Variant available online, or Call Us

Part Number	BSPP Female	Price
FET02	1/8"	1.84
FET04	1/4"	2.62
FET06	3/8"	3.92
FET08	1/2"	9.82
FET12	3/4"	10.50
FET16	1"	13.88
FET20	1.1/4"	19.60
FET24	1.1/2"	24.70
FET32	2"	36.55
FET48	3"	85.95
FET64	4"	219.40

**Equal 'Y' Branch BSPP**

DW QC: 1441



&gt;&gt;&gt; Full Range Shown Here

Part Number	BSPP Female	Price
FY02	1/8"	2.23
FY04	1/4"	2.75
FY06	3/8"	4.55
FY08	1/2"	6.94

**Equal 'Y' Branch BSPP Nickel Plated**

DE QC: 1442



&gt;&gt;&gt; Full Range Shown Here

Part Number	BSPP Female	Price
FY02NP	1/8"	3.19
FY04NP	1/4"	3.81
FY06NP	3/8"	6.67
FY08NP	1/2"	10.24

**Equal 'Y' Branch BSPT x BSPP Nickel Plated**

EI QC: 1444



&gt;&gt;&gt; 1 More Variant available online, or Call Us

Part Number	BSPT Male	BSPP Female	Price
MFY04NP	1/4"	1/4"	2.98
MFY06NP	3/8"	3/8"	4.93
MFY08NP	1/2"	1/2"	8.04

**Triple Outlet BSPP**

CV QC: 1445



&gt;&gt;&gt; Full Range Shown Here

Part Number	BSPP Female	Price
T006	3/8"	17.30

**Triple Outlet BSPP Nickel Plated**

DW QC: 1446



&gt;&gt;&gt; Full Range Shown Here

Part Number	BSPP Female	Price
T006NP	3/8"	17.13

**Crosses**



**Equal Cross BSPT**



DW QC: 1447



▶▶▶ 3 More Variants available online, or Call Us

Part Number	BSPT Male	Price
MCX08	1/2"	8.61
MCX12	3/4"	17.95
MCX16	1"	27.80

**Equal Cross BSPT Nickel Plated**



DE QC: 1448



▶▶▶ 1 More Variant available online, or Call Us

Part Number	BSPT Male	Price
MCX02NP	1/8"	4.19
MCX04NP	1/4"	5.24
MCX06NP	3/8"	7.76
MCX12NP	3/4"	19.92
MCX16NP	1"	30.94

**Equal Cross BSPT x BSPP**



DW QC: 1449



▶▶▶ 2 More Variants available online, or Call Us

Part Number	BSPT Male	BSPP Female	Price
MFCX02	1/8"	1/8"	2.89
MFCX04	1/4"	1/4"	3.70
MFCX12	3/4"	3/4"	18.58
MFCX16	1"	1"	29.13

**Equal Cross BSPT x BSPP Nickel Plated**



DE QC: 1450



▶▶▶ 1 More Variant available online, or Call Us

Part Number	BSPT Male	BSPP Female	Price
MFCX04NP	1/4"	1/4"	5.29
MFCX06NP	3/8"	3/8"	8.19
MFCX08NP	1/2"	1/2"	13.10
MFCX12NP	3/4"	3/4"	20.82
MFCX16NP	1"	1"	32.75

**Equal Cross BSPP**



DW QC: 1451



▶▶▶ 1 More Variant available online, or Call Us

Part Number	BSPP Female	Price
CX02	1/8"	3.00
CX04	1/4"	3.70
CX06	3/8"	5.38
CX08	1/2"	8.61

**Equal Cross BSPP Nickel Plated**



DE QC: 1452

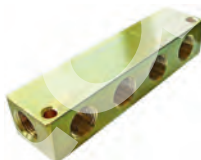


▶▶▶ Full Range Shown Here

Part Number	BSPP Female	Price
CX02NP	1/8"	4.38
CX04NP	1/4"	5.52
CX06NP	3/8"	8.19
CX08NP	1/2"	13.10
CX12NP	3/4"	21.14
CX16NP	1"	33.07



**Single Sided Manifold Block - Brass**



AX QC: 1453



▶▶▶ Full Range Shown Here

Part Number	BSPP Female	No. Of Outlet	Price
MB02/02	1/8"	2	16.08
MB02/04	1/8"	4	21.02
MB02/06	1/8"	6	25.65
MB02/08	1/8"	8	27.04
MB04/02	1/4"	2	24.37
MB04/04	1/4"	4	29.66
MB04/06	1/4"	6	39.48
MB04/08	1/4"	8	50.33
MB04/10	1/4"	10	56.75
MB04/12	1/4"	12	76.63
MB06/02	3/8"	2	24.41
MB06/04	3/8"	4	31.33
MB06/06	3/8"	6	55.96
MB06/08	3/8"	8	70.53
MB08/04	1/2"	4	61.60
MB08/06	1/2"	6	94.74
MB08/08	1/2"	8	116.26
MB12/04	3/4"	4	113.23
MB12/06	3/4"	6	160.91

**Un-Equal Manifold Block - Brass**



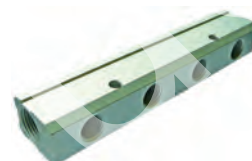
AX QC: 1454



▶▶▶ 1 More Variant available online, or Call Us

Part Number	BSPP Female Inlet	BSPP Female Outlet	No. of Outlets	Price
MB04/02/04	1/4"	1/8"	4	28.00
MB04/02/06	1/4"	1/8"	6	39.48
MB04/02/08	1/4"	1/8"	8	50.33
MB06/04/04	3/8"	1/4"	4	31.33
MB06/04/06	3/8"	1/4"	6	55.96
MB06/04/08	3/8"	1/4"	8	68.87
MB08/06/04	1/2"	3/8"	4	61.60
MB08/06/06	1/2"	3/8"	6	94.74
MB12/08/04	3/4"	1/2"	4	108.25

**Single Sided Manifold - Aluminium**



EL QC: 1455



▶▶▶ Full Range Shown Here

Part Number	BSPP Female Inlet	BSPP Female Outlet	No. Of Outlet	Price
MBAS04/02/02	1/4"	1/8"	2	12.78
MBAS04/02/03	1/4"	1/8"	3	17.54
MBAS04/02/04	1/4"	1/8"	4	22.77
MBAS04/02/05	1/4"	1/8"	5	29.20
MBAS04/02/06	1/4"	1/8"	6	34.27
MBAS06/04/02	3/8"	1/4"	2	15.24
MBAS06/04/03	3/8"	1/4"	3	18.68
MBAS06/04/04	3/8"	1/4"	4	24.73
MBAS06/04/05	3/8"	1/4"	5	30.77
MBAS06/04/06	3/8"	1/4"	6	37.02
MBAS08/06/02	1/2"	3/8"	2	18.98
MBAS08/06/03	1/2"	3/8"	3	22.72
MBAS08/06/04	1/2"	3/8"	4	28.62
MBAS08/06/05	1/2"	3/8"	5	33.58
MBAS08/06/06	1/2"	3/8"	6	39.33

**Double Sided Manifold - Aluminium**



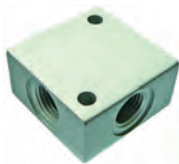
EM QC: 1456



▶▶▶ 1 More Variant available online, or Call Us

Part Number	BSPP Female Inlet	BSPP Female Outlet	No. Of Outlet (Each Side)	Price
MBAD04/02/03	1/4"	1/8"	3	14.88
MBAD04/02/04	1/4"	1/8"	4	20.64
MBAD04/02/05	1/4"	1/8"	5	24.47
MBAD04/02/06	1/4"	1/8"	6	26.35
MBAD06/04/02	3/8"	1/4"	2	11.69
MBAD06/04/03	3/8"	1/4"	3	15.95
MBAD06/04/04	3/8"	1/4"	4	22.67
MBAD06/04/05	3/8"	1/4"	5	26.32
MBAD06/04/06	3/8"	1/4"	6	31.82
MBAD08/06/02	1/2"	3/8"	2	19.20
MBAD08/06/03	1/2"	3/8"	3	22.88
MBAD08/06/04	1/2"	3/8"	4	28.61
MBAD08/06/05	1/2"	3/8"	5	33.56
MBAD08/06/06	1/2"	3/8"	6	39.29

## Manifold / Block Cross



EM QC: 1457



▶▶▶ Full Range Shown Here

Part Number	BSPP Female	Price
MBA02	1/8"	2.98
MBA04	1/4"	4.69
MBA06	3/8"	7.15
MBA08	1/2"	8.39

## Oxygen Hose Tail RH Thread



EN QC: 1460

▶▶▶ Full Range Shown Here

Part Number	BSPP Female	Hosetail	Price
G004/04	1/4"	1/4"	1.61
G006/04	3/8"	1/4"	2.85
G006/05	3/8"	5/16"	2.85
G006/06	3/8"	3/8"	2.85

Product

## ▶ Oxy-Acetylene Fittings

## Acetylene Hose Tail LH Thread



EN QC: 1458

▶▶▶ Full Range Shown Here

Part Number	Left Hand BSPP Female	Hosetail	Price
GA04/04	1/4"	1/4"	4.47
GA06/04	3/8"	1/4"	4.47
GA06/05	3/8"	5/16"	4.47
GA06/06	3/8"	3/8"	4.47

## Acetylene Hose Tail with Safety Check Valve LH Thread



EO QC: 1459

▶▶▶ 1 More Variant available online, or Call Us

Part Number	Left Hand BSPP Female	Hosetail	Price
GAV04/04	1/4"	1/4"	6.90
GAV06/04	3/8"	1/4"	6.90
GAV06/06	3/8"	3/8"	6.90



We sell Oxygen/Acetylene  
/Propane Hose sets  
see Section 12