

Industrial and Process Valves

PRODUCTS

Ball Valves	1	Butterfly Valves Iron and St/Steel	12
Gate, Globe and Needle Valves	5	Angle Seat Valves	12
Check, Slide and Strainer Valves	6	Actuated Ball Valves Brass and St/Steel	12
Non Return Valves	8	Solenoid Process Valves	13
Safety Relief Valves Adjustable and Calibrated	8	Flow Indication and Metering	15
Stainless Steel Ball Valves	10		
St/Steel Gate, Needle, Check and Strainer Valves	11		



BRANDS



Product **Ball Valves**

Mini Ball Valve F/F



HG QC: 2853



▶▶▶ Full Range Shown Here

Part Number	Size	Price
VM02	1/8"	3.97
VM04	1/4"	4.15
VM06	3/8"	4.15
VM08	1/2"	4.87
VM12	3/4"	5.12

Mini Ball Valve F/F WRAS



HG QC: 2854



▶▶▶ 1 More Variant available online, or Call Us

Part Number	Size	Price
BE4002-02	1/8"	4.89
BE4002-04	1/4"	4.89
BE4002-06	3/8"	4.89
BE4002-08	1/2"	5.27

Mini Ball Valve F/F Gas Approved



OA QC: 2855



▶▶▶ Full Range Shown Here

Part Number	Thread	Price
6300/02	1/8"	6.07
6300/04	1/4"	6.32
6300/06	3/8"	6.39
6300/08	1/2"	9.54

Mini Ball Valve M/F



HG QC: 2856



▶▶▶ Full Range Shown Here

Part Number	Size	Price
VMMF02	1/8"	3.31
VMMF04	1/4"	3.22
VMMF06	3/8"	4.15
VMMF08	1/2"	4.50
VMMF12	3/4"	5.24

Mini Ball Valve M/F WRAS



HG QC: 2857



▶▶▶ 1 More Variant available online, or Call Us

Part Number	Size	Price
BE4003-02	1/8"	4.89
BE4003-04	1/4"	4.89
BE4003-06	3/8"	4.89
BE4003-08	1/2"	5.27

Mini Ball Valve M/F Gas Approved



IH QC: 2858



▶▶▶ Full Range Shown Here

Part Number	BSPT Male Thread	BSPP Female Thread	Price
6310/02	1/8"	1/8"	6.70
6310/04	1/4"	1/4"	7.00
6310/06	3/8"	3/8"	7.23
6310/08	1/2"	1/2"	9.96
6310/12	3/4"	3/4"	13.01

Screw Driver Mini Ball Valve F/F



HG QC: 2859



▶▶▶ 2 More Variants available online, or Call Us

Part Number	Size	Price
VMSD02	1/8"	4.26
VMSD06	3/8"	4.28
VMSD12	3/4"	6.60

Screw Driver Mini Ball Valve M/F



HG QC: 2861



▶▶▶ Full Range Shown Here

Part Number	Size	Price
VMMFSD02	1/8"	4.52
VMMFSD04	1/4"	4.52
VMMFSD06	3/8"	4.71
VMMFSD08	1/2"	5.10
VMMFSD12	3/4"	6.60



See our website for all the sizes we stock

Mini Ball Valve Compression Ends



IH QC: 2863



▶▶▶ Full Range Shown Here

Part Number	Tube O/D (mm)	Price
6450/06	6	7.59
6450/08	8	7.86
6450/10	10	8.26
6450/12	12	8.54
6450/15	15	11.92

Mini Ball Valve Push In Equal - 2/2



II QC: 2378



▶▶▶ Full Range Shown Here

Part Number	Tube O/D (mm)	Price
79100400	4	17.02
79100600	6	17.60
79100800	8	18.72
79101000	10	19.77
79101200	12	22.42

Mini Ball Valve Push In x BSPP - 2/2



II QC: 2379



▶▶▶ Full Range Shown Here

Part Number	Tube O/D (mm)	BSPP Male Thread	Price
79110610	6	1/8"	18.72
79110813	8	1/4"	19.77
79111017	10	3/8"	21.36
79111221	12	1/2"	23.45

Mini Ball Valve Vented Push In Equal - 3/2

II QC: 2380



Full Range Shown Here

Part Number	Tube O/D (mm)	Price
79130400	4	17.02
79130600	6	17.60
79130800	8	18.72
79131000	10	19.77
79131200	12	22.42

Mini Ball Valve Vented Push In x BSPP - 3/2

II QC: 2381



Full Range Shown Here

Part Number	Tube O/D (mm)	BSPP Male Thread	Price
79140610	6	1/8"	18.72
79140813	8	1/4"	19.77
79141017	10	3/8"	27.07
79141221	12	1/2"	23.45

Joining Clips for Legris Mini Ball Valves & Regulators

II QC: 4847



Full Range Shown Here

Part Number	Description	Price
70000005	Connect 4 6 & 8mm valves together	0.93
70000006	Connect 10mm & 12mm valves together	1.15

Ball Valve - Push In Equal

IC QC: 2263



Full Range Shown Here

Part Number	Tube O/D (mm) 1	Tube O/D (mm) 2	Price
PVB06/06	6	6	8.23
PVB08/06	8	6	11.57
PVB08/08	8	8	8.23
PVB10/10	10	10	22.38
PVB12/12	12	12	23.22

Ball Valve - Push In x BSPT

IC QC: 2262



Full Range Shown Here

Part Number	Tube O/D (mm)	BSPT Male Thread	Price
PVFM06/02	6	1/8"	9.79
PVFM06/04	6	1/4"	12.77
PVFM06/06	6	3/8"	15.18
PVFM08/02	8	1/8"	16.86
PVFM08/04	8	1/4"	10.38
PVFM08/06	8	3/8"	10.98

Ball Valve - M/M BSPT

ID QC: 2261



Full Range Shown Here

Part Number	BSPT Male Thread 1	BSPT Male Thread 2	Price
PVM02/02	1/8"	1/8"	9.79
PVM04/02	1/4"	1/8"	10.39
PVM04/04	1/4"	1/4"	12.12
PVM04/06	1/4"	3/8"	11.60
PVM06/06	3/8"	3/8"	13.38
PVM08/06	1/2"	3/8"	12.77
PVM08/08	1/2"	1/2"	14.62

Ball Valve - Push In x NPT

IC QC: 2283



Full Range Shown Here

Part Number	O/D in MM	NPT Male Thread	Price
PVFM06/02NPT	6	1/8"	16.87
PVFM06/04NPT	6	1/4"	20.06
PVFM06/06NPT	6	3/8"	21.17
PVFM08/02NPT	8	1/8"	21.13
PVFM08/04NPT	8	1/4"	20.06
PVFM08/06NPT	8	3/8"	21.17

Lever Handle Ball Valve F/F

HG QC: 2872



Full Range Shown Here

Part Number	Size	Price
VL04	1/4"	4.80
VL06	3/8"	4.45
VL08	1/2"	5.34
VL12	3/4"	8.16
VL16	1"	13.13
VL20	1.1/4"	21.23
VL24	1.1/2"	28.10
VL32	2"	48.93
VL40	2.1/2"	89.89
VL48	3"	157.68
VL64	4"	217.00

BE Range - Lever Handle Ball Valve F/F

HG QC: 2873



Full Range Shown Here

Part Number	Size	Price
BE4100-04	1/4"	5.19
BE4100-06	3/8"	5.19
BE4100-08	1/2"	5.64
BE4100-12	3/4"	8.99
BE4100-16	1"	14.00
BE4100-20	1.1/4"	21.00
BE4100-24	1.1/2"	31.65
BE4100-32	2"	47.93
BE4175-40	2.1/2"	109.70
BE4175-48	3"	178.85
BE4175-64	4"	296.22

Lever Handle Ball Valve NPT F/F

HG QC: 2874



3 More Variants available online, or Call Us

Part Number	NPT Female Thread	Price
BE4172-08	1/2"	9.39
BE4172-12	3/4"	14.08
BE4172-16	1"	20.66
BE4172-24	1.1/2"	49.93
BE4172-32	2"	76.98

Lever Handle Ball Valve M/F

HG QC: 2875



Full Range Shown Here

Part Number	Size	Price
VLMF04	1/4"	5.14
VLMF06	3/8"	5.83
VLMF08	1/2"	6.81
VLMF12	3/4"	9.48
VLMF16	1"	13.46
VLMF20	1.1/4"	21.91
VLMF24	1.1/2"	31.95
VLMF32	2"	48.64

BE Range - Lever Handle Ball Valve M/F

HG QC: 2876



2 More Variants available online, or Call Us

Part Number	Size	Price
BE4331-04	1/4"	5.33
BE4331-08	1/2"	6.24
BE4331-12	3/4"	10.21
BE4331-16	1"	15.14
BE4331-24	1.1/2"	36.36
BE4331-32	2"	51.22

Lever Handle Ball Valve Gas Approved F/F



HG QC: 2877



Full Range Shown Here

Part Number	Size	Price
VLG04	1/4"	5.84
VLG06	3/8"	7.03
VLG08	1/2"	6.46
VLG12	3/4"	9.43
VLG16	1"	13.57
VLG20	1.1/4"	22.65
VLG24	1.1/2"	34.28
VLG32	2"	51.10
VLG40	2.1/2"	109.13
VLG48	3"	173.96
VLG64	4"	307.74

Lever Handle Ball Valve WRAS/Gas Approved F/F



HG QC: 2878



Full Range Shown Here

Part Number	Size	Price
BE4181-08	1/2"	7.00
BE4181-12	3/4"	11.05
BE4181-16	1"	16.29
BE4181-20	1.1/4"	27.01
BE4181-24	1.1/2"	37.89
BE4181-32	2"	56.70
BE4181-40	2.1/2"	109.70
BE4181-48	3"	181.41
BE4181-64	4"	316.42

Lever Handle Ball Valve WRAS/Gas Approved High Pressure F/F



HG QC: 2879



1 More Variant available online, or Call Us

Part Number	Size	Price
BE7160-04	1/4"	6.97
BE7160-06	3/8"	8.17
BE7160-08	1/2"	8.18
BE7160-12	3/4"	11.43
BE7160-16	1"	17.89
BE7160-24	1.1/2"	44.37
BE7160-32	2"	64.33
BE7160-40	2.1/2"	171.81
BE7160-48	3"	236.78
BE7160-64	4"	424.48

Cast Lever Handle Ball Valve Gas Approved M/F



HG QC: 2880



Full Range Shown Here

Part Number	Size	Price
VLMFG08	1/2"	9.47
VLMFG12	3/4"	13.58
VLMFG16	1"	19.26
VLMFG20	1.1/4"	34.31
VLMFG24	1.1/2"	44.47
VLMFG32	2"	63.03
VLMFG40	2.1/2"	177.58
VLMFG48	3"	280.23
VLMFG64	4"	299.21

Lever Handle Ball Valve Compression Ends



OB QC: 2882



Full Range Shown Here

Part Number	Size (mm)	Price
VLCOM15	15	9.24
VLCOM22	22	13.41
VLCOM28	28	18.44

Lever Handle Ball Valve WRAS Approved Compression Ends



HG QC: 2883



1 More Variant available online, or Call Us

Part Number	Size	Price
BE2440-15	15MM	12.33
BE2440-22	22MM	18.01

BE Range - Lever Handle Ball Valve WRAS Approved Compression Ends



HG QC: 2884



2 More Variants available online, or Call Us

Part Number	Size	Price
BE2441-22	22MM	18.01

Locking Lever Ball Valve



HG QC: 2885



Full Range Shown Here

Part Number	Size	Price
VLLOCK04	1/4"	14.69
VLLOCK06	3/8"	14.07
VLLOCK08	1/2"	7.30
VLLOCK12	3/4"	10.43
VLLOCK16	1"	16.53
VLLOCK20	1.1/4"	25.38
VLLOCK24	1.1/2"	34.94
VLLOCK32	2"	53.48
VLLOCK40	2.1/2"	136.02
VLLOCK48	3"	205.97
VLLOCK64	4"	333.13

Locking & Vented Lever Ball Valve



HG QC: 2887



Full Range Shown Here

Part Number	Size	Price
VLLOVEN04	1/4"	22.07
VLLOVEN06	3/8"	22.07
VLLOVEN08	1/2"	22.75
VLLOVEN12	3/4"	30.99
VLLOVEN16	1"	38.48

Standard Brass Padlocks



VA QC: 6515



Full Range Shown Here

Part Number	Size	Price
SP24L	30mm	2.17
SP26L	40mm	3.18
SP28L	50mm	5.50

Vented Lever Ball Valve



HG QC: 2889



Full Range Shown Here

Part Number	Size	Price
VLVENT04	1/4"	23.72
VLVENT06	3/8"	28.38
VLVENT08	1/2"	28.38
VLVENT12	3/4"	35.83
VLVENT16	1"	49.36
VLVENT20	1.1/4"	72.07
VLVENT24	1.1/2"	114.27
VLVENT32	2"	161.87

Panel Mounting Lever Ball Valve



AN QC: 2891



Full Range Shown Here

Part Number	BSPP Female Thread	Price
4460410	1/8"	31.30
4460713	1/4"	29.70
4461017	3/8"	34.27
4461321	1/2"	35.68

Lever Handle Ball Valve with Hose Union

HG QC: 2892



1 More Variant available online, or Call Us

Part Number	Size	Price
BE5600-08	1/2"	9.87
BE5600-12	3/4"	15.52

L Port Three Way Ball Valve

HG QC: 2894



Full Range Shown Here

Part Number	Size	Price
VLP04	1/4"	37.65
VLP06	3/8"	37.65
VLP08	1/2"	37.65
VLP12	3/4"	56.14
VLP16	1"	79.74
VLP20	1 1/4"	111.65
VLP24	1 1/2"	191.12
VLP32	2"	260.89

T Port Three Way Ball Valve

HG QC: 2896



Full Range Shown Here

Part Number	Size	Price
VTP04	1/4"	39.13
VTP06	3/8"	39.13
VTP08	1/2"	39.13
VTP12	3/4"	56.14
VTP16	1"	79.74
VTP20	1 1/4"	111.65
VTP24	1 1/2"	191.12
VTP32	2"	260.89



See our website for all the sizes we stock

T Handle Ball Valve F/F

HG QC: 2898



Full Range Shown Here

Part Number	Size	Price
VT04	1/4"	4.89
VT06	3/8"	5.37
VT08	1/2"	5.92
VT12	3/4"	8.70
VT16	1"	14.73

BE Range - T Handle Ball Valve F/F

HG QC: 2899



Full Range Shown Here

Part Number	Size	Price
BE4101-04	1/4"	5.13
BE4101-06	3/8"	5.13
BE4101-08	1/2"	6.54
BE4101-12	3/4"	7.87
BE4101-16	1"	11.81

T Handle Ball Valve Gas Approved F/F

HG QC: 2900



Full Range Shown Here

Part Number	Size	Price
VTG04	1/4"	5.61
VTG06	3/8"	5.61
VTG08	1/2"	7.01
VTG12	3/4"	11.43
VTG16	1"	17.57

T Handle Ball Valve WRAS/Gas Approved F/F

HG QC: 2901



2 More Variants available online, or Call Us

Part Number	Size	Price
BE7164-06	3/8"	7.34
BE7164-08	1/2"	8.18
BE7164-12	3/4"	12.28

T Handle Ball Valve M/F

HG QC: 2902



Full Range Shown Here

Part Number	Size	Price
VTMF04	1/4"	5.94
VTMF06	3/8"	6.43
VTMF08	1/2"	6.25
VTMF12	3/4"	9.05
VTMF16	1"	13.60

T Handle Ball Valve WRAS Approved M/F

HG QC: 2903



3 More Variants available online, or Call Us

Part Number	Size	Price
BE4334-08	1/2"	7.34
BE4334-12	3/4"	9.80

T Handle Ball Valve Gas Approved M/F

HG QC: 2904



Full Range Shown Here

Part Number	Size	Price
VTMG08	1/2"	9.20
VTMG12	3/4"	12.65
VTMG16	1"	20.54

T Handle Ball Valve WRAS/Gas Approved M/F

HG QC: 2905



3 More Variants available online, or Call Us

Part Number	Size	Price
BE7224-04	1/4"	7.08
BE7224-06	3/8"	7.08

T Handle Ball Valve With Lock Gas Approved F/F



HG QC: 2906



Full Range Shown Here

Part Number	Size	Price
VTGLOCK08	1/2"	48.49
VTGLOCK12	3/4"	51.73
VTGLOCK16	1"	73.88

T Handle Ball Valve Compression Ends



OB QC: 2908



2 More Variants available online, or Call Us

Part Number	Size (mm)	Price
VTCOM28	28	19.18

BE Range - T Handle Ball Valve WRAS Approved Compression Ends



HG QC: 2910



2 More Variants available online, or Call Us

Part Number	Size	Price
BE2447-15	15MM	12.33

CR Brass Hose Bibtap



HG QC: 2911



Full Range Shown Here

Part Number	Size	Price
BE2453-08	1/2"	11.38
BE2453-12	3/4"	23.63

CR Brass Hose Bibtap c/w Double Check valve

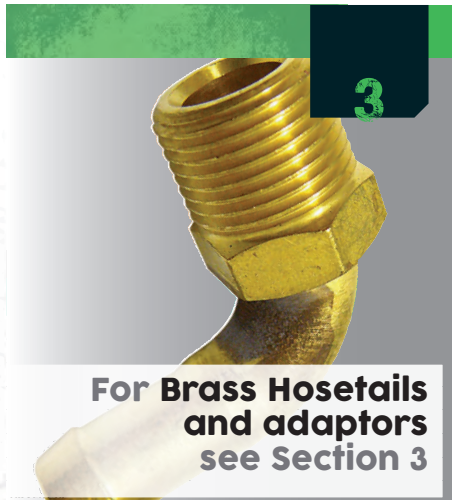


HG QC: 2912



Full Range Shown Here

Part Number	Size	Price
BE2453CV-08	1/2"	24.05



For Brass Hose tails and adaptors see Section 3

Product Gate Globe & Needle Valves

Gate Valve



HG QC: 2913

Full Range Shown Here

Part Number	Size	Price
VGA04	1/4"	6.00
VGA06	3/8"	5.35
VGA08	1/2"	5.67
VGA12	3/4"	8.50
VGA16	1"	11.44
VGA20	1.1/4"	17.80
VGA24	1.1/2"	22.26
VGA32	2"	35.47
VGA40	2.1/2"	66.67
VGA48	3"	98.64
VGA64	4"	146.67

BE Range - Gate Valve



HG QC: 2914



Full Range Shown Here

Part Number	Size	Price
BE2015-04	1/4"	6.00
BE2015-06	3/8"	5.74
BE2015-08	1/2"	5.67
BE2015-12	3/4"	10.13
BE2015-16	1"	13.38
BE2015-20	1.1/4"	20.50
BE2015-24	1.1/2"	26.71
BE2015-32	2"	41.81
BE2015-40	2.1/2"	78.98
BE2015-48	3"	110.75
BE2015-64	4"	168.77

Bronze LG2 Gate Valve - PN20



HG QC: 2915



1 More Variant available online, or Call Us

Part Number	Size	Price
BE1520-08	1/2"	14.64
BE1520-12	3/4"	20.88
BE1520-16	1"	26.67
BE1520-24	1.1/2"	53.29
BE1520-32	2"	77.72
BE1520-40	2.1/2"	145.68
BE1520-48	3"	215.84
BE1520-64	4"	368.16

Bronze Gate Valve Lockshield



HG QC: 2916



Full Range Shown Here

Part Number	Size	Price
BE1520LS-08	1/2"	14.64
BE1520LS-12	3/4"	20.88
BE1520LS-16	1"	26.67
BE1520LS-20	1.1/4"	34.64
BE1520LS-24	1.1/2"	53.29
BE1520LS-32	2"	77.72

Bronze Body Gate Valve - Flanged



HG QC: 2918



3 More Variants available online, or Call Us

Part Number	Size	Price
BE1151-08	1/2"	123.74
BE1151-12	3/4"	135.01
BE1151-16	1"	157.36
BE1151-20	1.1/4"	223.14
BE1151-24	1.1/2"	285.05
BE1151-40	2.1/2"	592.51

Cast Iron Gate Valve - Flanged



HG QC: 2919



4 More Variants available online, or Call Us

Part Number	Size	Weight (Kg)	Price
BE5160-32	2"	12	221.50
BE5160-40	2.1/2"	19	249.63
BE5160-48	3"	24	274.24
BE5160-64	4"	35	396.60
BE5160-96	6"	62	691.92

Cast Iron Knife Gate Valve - Unidirectional



HG QC: 2920



▶▶▶ 8 More Variants available online, or Call Us

Part Number	Size	Weight (Kg)	Price
BE5800-160	10"	50	1531.50

Bronze Globe Valve



HG QC: 2921

▶▶▶ Full Range Shown Here

Part Number	BSPP Female Thread	Price
VGLH04	1/4"	46.97
VGLH06	3/8"	64.73
VGLH08	1/2"	22.99
VGLH12	3/4"	38.15
VGLH16	1"	76.40
VGLH20	1.1/4"	85.95
VGLH24	1.1/2"	156.32
VGLH32	2"	247.38

Bronze Globe Valve - Black Handle



HG QC: 2922

▶▶▶ 1 More Variant available online, or Call Us

Part Number	BSPP Female Thread	Price
VBGL08	1/2"	27.15
VBGL12	3/4"	33.17
VBGL16	1"	52.00
VBGL20	1.1/4"	59.93
VBGL24	1.1/2"	108.10
VBGL32	2"	173.83

Self Closing Bronze Lever Globe Valve



HG QC: 2893



▶▶▶ Full Range Shown Here

Part Number	Size	Price
BE1003-08	1/2"	110.11
BE1003-12	3/4"	164.08
BE1003-16	1"	200.15
BE1003-20	1.1/4"	333.17
BE1003-24	1.1/2"	372.92
BE1003-32	2"	660.58

Bronze Globe Valve - Flanged



HG QC: 2924



▶▶▶ 4 More Variants available online, or Call Us

Part Number	Size	Price
BE1051-08	1/2"	123.74
BE1051-12	3/4"	170.62
BE1051-16	1"	208.12
BE1051-20	1.1/4"	305.63
BE1051-24	1.1/2"	354.40

Brass Needle Valve



HG QC: 2925

▶▶▶ Full Range Shown Here

Part Number	Size	Price
VNE02	1/8"	22.83
VNE04	1/4"	22.88
VNE06	3/8"	26.68
VNE08	1/2"	34.35

Adjustable Check Valves



AP QC: 2926



▶▶▶ Full Range Shown Here

Part Number	Description	Thread	Price
79301919	F x F	M5 Metric	31.79
79301010	F x F	1/8" BSPP	28.85
79301313	F x F	1/4" BSPP	30.41
79302121	F x F	1/2" BSPP	42.07
79311010	M x F	1/8" BSPP	33.19
79311313	M x F	1/4" BSPP	37.70
79312121	M x F	1/2" BSPP	50.92
79321010	M x F	1/8" BSPP	33.19
79321313	M x F	1/4" BSPP	37.70
79322121	M x F	1/2" BSPP	50.92

Brass Spring Check Valve



HG QC: 2927

▶▶▶ Full Range Shown Here

Part Number	Size	Price
VC04	1/4"	6.85
VC06	3/8"	6.85
VC08	1/2"	6.95
VC12	3/4"	7.51
VC16	1"	8.26
VC20	1.1/4"	12.64
VC24	1.1/2"	19.21
VC32	2"	27.75
VC40	2.1/2"	62.68
VC48	3"	84.40
VC64	4"	141.42

Brass Spring Check Valve - Acetal Disc



HG QC: 2928



▶▶▶ 2 More Variants available online, or Call Us

Part Number	Size	Price
BE2280-06	3/8"	6.97
BE2280-08	1/2"	5.90
BE2280-12	3/4"	7.59
BE2280-16	1"	9.71
BE2280-20	1.1/4"	13.92
BE2280-32	2"	29.12
BE2280-40	2.1/2"	69.52
BE2280-48	3"	85.43
BE2280-64	4"	153.99

See our website for all the sizes we stock

16

For Bags of Rags see Section 16 page 7

Product ▶ Check Slide & Strainer Valves

Brass Spring Check Valve - Metal Disc

HG QC: 2929



▶▶▶ 1 More Variant available online, or Call Us

Part Number	Size	Price
BE2285-08	1/2"	8.94
BE2285-12	3/4"	11.85
BE2285-16	1"	15.23
BE2285-24	1.1/2"	29.62
BE2285-32	2"	40.84
BE2285-40	2.1/2"	111.05
BE2285-48	3"	151.00
BE2285-64	4"	222.04

Brass Double Check Valve - Compression Ends

HG QC: 2930



▶▶▶ 2 More Variants available online, or Call Us

Part Number	Size	Price
BE2452-15	15mm	14.76

Brass Swing Check Valve

HG QC: 2931

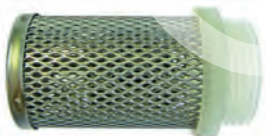


▶▶▶ Full Range Shown Here

Part Number	Size	Price
VSC06	3/8"	9.55
VSC08	1/2"	9.33
VSC12	3/4"	11.50
VSC16	1"	16.53
VSC20	1.1/4"	23.83
VSC24	1.1/2"	29.17
VSC32	2"	39.77
VSC40	2.1/2"	68.69
VSC48	3"	92.19

Mesh Filter

HG QC: 5328

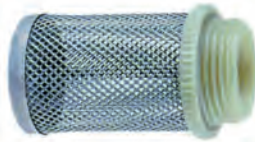


▶▶▶ 2 More Variants available online, or Call Us

Part Number	Size	Price
VCFM08	1/2"	2.61
VCFM12	3/4"	3.17
VCFM16	1"	3.70
VCFM24	1.1/2"	5.42
VCFM32	2"	7.20

Stainless Steel Mesh Filter

OD QC: 2933



▶▶▶ 4 More Variants available online, or Call Us

Part Number	Size	Price
BE9930V-08	1/2"	2.81
BE9930V-12	3/4"	3.43
BE9930V-16	1"	3.99
BE9930V-48	3"	16.93
BE9930V-64	4"	21.99

Cast Iron Swing Check Valve - Flanged

HG QC: 2934



▶▶▶ 9 More Variants available online, or Call Us

Part Number	Size	Weight (Kg)	Price
BES170-24	1.1/2"	9	156.32

Hand Slide Valve - M/F

OE QC: 2935



▶▶▶ 1 More Variant available online, or Call Us

Part Number	Size	Thread Size	Price
VMFSL04	1/4"	1/4"	14.16
VMFSL06	3/8"	3/8"	16.25
VMFSL12	3/4"	3/4"	35.69

Hand Slide Valve - F/F

IH QC: 2936



▶▶▶ Full Range Shown Here

Part Number	Size	Price
VSLIDE02	1/8"	12.26
VSLIDE04	1/4"	14.39
VSLIDE06	3/8"	18.04
VSLIDE08	1/2"	21.85

Brass Y Strainer

HG QC: 2937



▶▶▶ Full Range Shown Here

Part Number	Size	Price
VS04	1/4"	7.88
VS06	3/8"	7.88
VS08	1/2"	5.14
VS12	3/4"	9.35
VS16	1"	17.26
VS20	1.1/4"	21.31
VS24	1.1/2"	27.74
VS32	2"	49.28

BE Range - Brass Y Strainer

HG QC: 2938



▶▶▶ 4 More Variants available online, or Call Us

Part Number	Size	Price
BE2500-08	1/2"	5.36
BE2500-12	3/4"	8.32
BE2500-16	1"	11.85
BE2500-24	1.1/2"	28.68
BE2500-32	2"	50.50
BE2500-48	3"	147.37

Cast Iron Y Strainer - Flanged

HG QC: 2939



▶▶▶ 8 More Variants available online, or Call Us

Part Number	Size	Weight (Kg)	Price
BE5185-08	1/2"	3	51.47
BE5185-24	1.1/2"	8	75.53
BE5185-32	2"	11	115.86
BE5185-40	2.1/2"	16	168.33
BE5185-48	3"	18	199.99
BE5185-64	4"	27	296.82

Product ▶ Non Return Valves

Poppet Check N.R.V Valves F/F



SJ QC: 5329



▶▶▶ 2 More Variants available online, or Call Us

Part Number	Port Size	Seal	Price
6.07.05	M5	NBR	7.11
6.07.14	G1/4"	NBR	8.46
6.07.38	G3/8"	NBR	10.74
6.07.12	G1/2"	NBR	14.06
6.07.014V	G1/4"	FPM	10.84
6.07.38V	G3/8"	FPM	13.12
6.07.12V	G1/2"	FPM	16.56

NRV - Tube to Tube



IK QC: 2375



▶▶▶ Full Range Shown Here

Part Number	Tube O/D (mm)	Price
79960400	4	10.49
79960600	6	11.23
79960800	8	12.65
79961000	10	19.34
79961200	12	26.98

NRV Exhaust Version - Thread to Tube



IK QC: 2376



▶▶▶ 2 More Variants available online, or Call Us

Part Number	Tube O/D (mm)	BSPP & Metric Male Thread	Price
79940410	4	1/8"	10.49
79940610	6	1/8"	10.79
79940810	8	1/8"	12.40
79940813	8	1/4"	12.65
79941017	10	3/8"	21.81
79941217	12	3/8"	25.58
79941221	12	1/2"	26.98

NRV Supply Version Tube to Thread



IK QC: 2377



▶▶▶ 3 More Variants available online, or Call Us

Part Number	Tube O/D (mm)	BSPP & Metric Male Thread	Price
79840410	4	1/8"	10.49
79840610	6	1/8"	10.79
79840613	6	1/4"	11.23
79840813	8	1/4"	12.65
79841017	10	3/8"	21.81
79841217	12	3/8"	25.58

Non Return Valve F/F



IH QC: 2943



▶▶▶ Full Range Shown Here

Part Number	Size	Price
VN5M	M5	6.86
VN02	1/8"	6.38
VN04	1/4"	7.90
VN06	3/8"	17.21
VN08	1/2"	17.70

Non Return Valve M/F



IH QC: 2944



▶▶▶ Full Range Shown Here

Part Number	Size	Price
VNMF5M	M5	7.06
VNMF02	1/8"	6.73
VNMF04	1/4"	8.30
VNMF06	3/8"	18.08
VNMF08	1/2"	18.54



Parker Non Return Valves VB Series



SQ QC: 5331



▶▶▶ 1 More Variant available online, or Call Us

Part Number	Thread BSPP	Price
VB12-Q-NQ-5	1/8"	19.27
VB22-Q-NQ-5	1/4"	19.27



Adjustable Safety Relief Valves 1/8" - 1"



DX QC: 5323



▶▶▶ 3 More Variants available online, or Call Us

Part Number	Male BSPP	Relief Pressure (bar)	Price
BE1016-02-0.5/2	1/8"	0.5 - 2	18.49
BE1016-02-2/6	1/8"	2 - 6	18.49
BE1016-02-6/10	1/8"	6 - 10	18.49
BE1016-04-0.5/2	1/4"	0.5 - 2	18.49
BE1016-04-2/6	1/4"	2 - 6	18.49
BE1016-04-6/10	1/4"	6 - 10	18.49
BE1016-04-10/18	1/4"	10 - 18	18.49
BE1016-08-2/8	3/8"	2 - 8	28.60
BE1016-08-8/16	3/8"	8 - 16	28.60
BE1016-08-0.5/2	1/2"	0.5 - 2	40.29
BE1016-08-2/6	1/2"	2 - 6	40.29
BE1016-08-8/16	1/2"	8 - 16	40.29
BE1016-12-0.5/4	3/4"	0.5 - 4	61.28
BE1016-12-8/16	3/4"	8 - 16	61.28
BE1016-16-0.5/2	1"	0.5 - 2	108.74
BE1016-16-4/8	1"	4 - 8	108.74
BE1016-16-8/16	1"	8 - 16	108.74

Calibrated Safety Relief Valves c/w Certificate 1/8" - 1/4"



N8 QC: 7797

▶▶▶ 17 More Variants available online, or Call Us

Part Number	Male BSPP	Relief Pressure (bar)	Max Discharge L/M	Price
BE1016-02-0.5B	1/8"	0.5 Bar	N/A	19.54
BE1016-02-5B	1/8"	5 Bar	1100	26.38
BE1016-02-6B	1/8"	6 Bar	1297	26.38
BE1016-02-8B	1/8"	8 Bar	1673	26.38
BE1016-04-5.5B	1/4"	5.5 Bar	1198	26.38
BE1016-04-6B	1/4"	6 Bar	1297	26.38
BE1016-04-6.5B	1/4"	6.5 Bar	1391	26.38
BE1016-04-7.5B	1/4"	7.5 Bar	1579	26.38
BE1016-04-8B	1/4"	8 Bar	1673	26.38
BE1016-04-8.5B	1/4"	8.5 Bar	1766	26.38
BE1016-04-9B	1/4"	9 Bar	1860	26.38
BE1016-04-10B	1/4"	10 Bar	2050	26.38
BE1016-04-11B	1/4"	11 Bar	2230	26.38
BE1016-04-12B	1/4"	12 Bar	2425	26.38

Calibrated Safety Relief Valves c/w Certificate 3/8" - 1/2"

DX QC: 5325



▶▶▶ 9 More Variants available online, or Call Us

Part Number	Male BSPP	Relief Pressure (bar)	Max Discharge L/M	Price
BE1016-06-6.5B	3/8"	6.5 Bar	2840	36.33
BE1016-06-7.5B	3/8"	7.5 Bar	3715	36.33
BE1016-06-8B	3/8"	8 Bar	3930	36.33
BE1016-06-9B	3/8"	9 Bar	4370	36.33
BE1016-06-10B	3/8"	10 Bar	4810	36.33
BE1016-06-11B	3/8"	11 Bar	5250	36.33
BE1016-06-11.5B	3/8"	11.5 Bar	5485	36.33
BE1016-06-12B	3/8"	12 Bar	5720	36.33
BE1016-08-5B	1/2"	5 Bar	2620	48.19
BE1016-08-6B	1/2"	6 Bar	3060	48.19
BE1016-08-6.5B	1/2"	6.5 Bar	3280	48.19
BE1016-08-7B	1/2"	7 Bar	3500	48.19
BE1016-08-7.5B	1/2"	7.5 Bar	3715	48.19
BE1016-08-8B	1/2"	8 Bar	3930	48.19
BE1016-08-8.5B	1/2"	8.5 Bar	4150	48.19
BE1016-08-9B	1/2"	9 Bar	4370	48.19
BE1016-08-9.5B	1/2"	9.5 Bar	4590	48.19
BE1016-08-10B	1/2"	10 Bar	4810	48.19
BE1016-08-11B	1/2"	11 Bar	5250	48.19
BE1016-08-11.5B	1/2"	11.5 Bar	5485	48.19
BE1016-08-12B	1/2"	12 Bar	5720	48.19

Calibrated Safety Relief Valves c/w Certificate 3/4" - 1"

DX QC: 5326



▶▶▶ 2 More Variants available online, or Call Us

Part Number	Male BSPP	Relief Pressure (bar)	Max Discharge L/M	Price
BE1016-12-8B	3/4"	8 Bar	10010	69.17
BE1016-12-10B	3/4"	10 Bar	12230	69.17
BE1016-12-11B	3/4"	11 Bar	13350	69.17
BE1016-12-12B	3/4"	12 Bar	14460	69.17
BE1016-16-8.5B	1"	8.5 Bar	16540	86.39
BE1016-16-10B	1"	10 Bar	19050	116.63
BE1016-16-11B	1"	11 Bar	20870	116.63
BE1016-16-12B	1"	12 Bar	22550	116.63

Nabic Fig 256B Pipe Interrupter Valve

TC QC: 7800



▶▶▶ Full Range Shown Here

Part Number	BSPP Male Thread	Length(mm)	Diameter (mm)	Kv	Price
N-256B-020-F	3/4"	68	29	1.61	110.21

Adjustable Brass/Bronze Spring Safety Relief Valves Capped

SY QC: 3005



▶▶▶ 9 More Variants available online, or Call Us

Part Number	Size	Range	Price
BE1018-08	1/2"	1-5 Bar	75.55
BE1018-08-5-12	1/2"	5-12 Bar	75.55
BE1018-12	3/4"	1-5 Bar	100.38
BE1018-16	1"	1-5 Bar	129.38
BE1018-16-5-12	1"	5-12 Bar	129.38
BE1018-32	2"	1-5 Bar	323.39
BE1018-32-5-12	2"	5-12 Bar	323.39

Adjustable Brass/Bronze Spring Safety Relief Valves

SY QC: 3006



▶▶▶ 9 More Variants available online, or Call Us

Part Number	Size	Range	Price
BE1017-08	1/2"	1-5 Bar	63.11
BE1017-08-5-12	1/2"	5-12 Bar	63.11
BE1017-12	3/4"	1-5 Bar	78.65
BE1017-16	1"	1-5 Bar	99.88
BE1017-16-5-12	1"	5-12 Bar	99.88
BE1017-20	1.1/4"	1-5 Bar	138.66
BE1017-24-5-12	1.1/2"	5-12 Bar	176.42

Adjustable Brass/Bronze Spring Lever Safety Relief Valves

SY QC: 3007



▶▶▶ 8 More Variants available online, or Call Us

Part Number	Size	Range	Price
BE1017L-16	1"	1-5 Bar	99.88
BE1017L-16-5-12	1"	5-12 Bar	99.88
BE1017L-24	1.1/2"	1-5 Bar	176.42
BE1017L-24-5-12	1.1/2"	5-12 Bar	176.42

Brass Pressure Reducing Valve - Union Ends

SY QC: 3008



▶▶▶ Full Range Shown Here

Part Number	Size	Price
BE1021-08	1/2"	61.74
BE1021-12	3/4"	98.01
BE1021-16	1"	105.29
BE1021-20	1.1/4"	200.45
BE1021-24	1.1/2"	223.76
BE1021-32	2"	360.34

Nabic High Lift Safety Valve - Fig 500

SZ QC: 3009



▶▶▶ 67 More Variants available online, or Call Us

Part Number	BSPP Female Thread (A)	BSPP Female Thread (B)	Set Pressure (bar)	Price
N-500-010-10	3/8"	1/2"	10	169.07
N-500-010-11	3/8"	1/2"	11	169.07
N-500-010-12.5	3/8"	1/2"	12.5	169.07
N-500-015-1	1/2"	3/4"	1	206.69
N-500-015-3	1/2"	3/4"	3	206.69
N-500-015-8.5	1/2"	3/4"	8.5	206.69
N-500-015-11	1/2"	3/4"	11	206.69
N-500-020-3	3/4"	1"	3	264.99
N-500-020-6.5	3/4"	1"	6.5	264.99
N-500-020-7.5	3/4"	1"	7.5	264.99
N-500-025-2.5	1"	1.1/4"	2.5	374.44
N-500-025-8	1"	1.1/4"	8	374.44
N-500-032-11	1.1/4"	1.1/2"	11	526.61

Nabic Safety Relief Valve - Fig 542

SZ QC: 3010



▶▶▶ 75 More Variants available online, or Call Us

Part Number	BSPP Female Thread	Set Pressure (bar)	Price
N-542-015-3.5	1/2"	3.5	164.93
N-542-015-5	1/2"	5	164.93
N-542-015-7	1/2"	7	164.93
N-542-020-2	3/4"	2	189.30
N-542-020-2.5	3/4"	2.5	189.30
N-542-020-3.5	3/4"	3.5	189.30
N-542-020-4	3/4"	4	189.30
N-542-020-5	3/4"	5	189.30
N-542-020-8.5	3/4"	8.5	189.30
N-542-020-10	3/4"	10	189.30
N-542-025-1.5	1"	1.5	250.21
N-542-025-2.5	1"	2.5	250.21
N-542-025-3.5	1"	3.5	250.21
N-542-032-3	1.1/4"	3	348.21
N-542-032-10	1.1/4"	10	348.21
N-542-050-3.5	2"	3.5	588.61
N-542-050-7	2"	7	588.61
N-542-050-10	2"	10	588.61

Can't find what you need? Call us - we can supply millions of parts from 1000s of suppliers

Product ▶ Stainless Steel Ball Valves

St/St Mini Ball Valve F/F



OF QC: 2945



Full Range Shown Here

Part Number	Size	Price
SSVM04	1/4"	15.21
SSVM06	3/8"	15.21
SSVM08	1/2"	15.23

St/St Mini Ball Valve M/F



BI QC: 2946



Full Range Shown Here

Part Number	Size	Price
SSVMMF04	1/4"	24.19
SSVMMF06	3/8"	15.26
SSVMMF08	1/2"	26.87

St/St One Piece Lever Ball Valve



HG QC: 2947



Full Range Shown Here

Part Number	Size	Price
SSV104	1/4"	11.56
SSV106	3/8"	12.58
SSV108	1/2"	13.79
SSV112	3/4"	18.39
SSV116	1"	25.63
SSV120	1.1/4"	32.50
SSV124	1.1/2"	44.41
SSV132	2"	63.91

BE Range - St/St One Piece Lever Ball Valve



HG QC: 2948



Full Range Shown Here

Part Number	Size	Price
BE6100-04	1/4"	9.71
BE6100-06	3/8"	11.18
BE6100-08	1/2"	13.92
BE6100-12	3/4"	17.85
BE6100-16	1"	25.63
BE6100-20	1.1/4"	31.22
BE6100-24	1.1/2"	44.40
BE6100-32	2"	66.95

St/St Two Piece Lever Ball Valve



HG QC: 2949



Full Range Shown Here

Part Number	Size	Price
SSV204	1/4"	16.95
SSV206	3/8"	16.95
SSV208	1/2"	17.85
SSV212	3/4"	22.42
SSV216	1"	31.28
SSV220	1.1/4"	43.62
SSV224	1.1/2"	69.62
SSV232	2"	96.60

BE Range - St/St Two Piece Lever Ball Valve



HG QC: 2950



Full Range Shown Here

Part Number	Size	Price
BE6200-04	1/4"	16.07
BE6200-06	3/8"	16.07
BE6200-08	1/2"	18.05
BE6200-12	3/4"	24.52
BE6200-16	1"	35.66
BE6200-20	1.1/4"	52.36
BE6200-24	1.1/2"	84.72
BE6200-32	2"	107.09
BE6200-40	2.1/2"	219.39
BE6200-48	3"	298.50
BE6200-64	4"	698.88

St/St Two Piece Spring Close Lever Ball Valve



HG QC: 2951



Full Range Shown Here

Part Number	Size	Price
BE6290-08	1/2"	46.83
BE6290-12	3/4"	63.28
BE6290-16	1"	86.91
BE6290-20	1.1/4"	131.63
BE6290-24	1.1/2"	168.77
BE6290-32	2"	270.01

St/St Two Piece Lever Ball Valve M/F



HG QC: 2952



2 More Variants available online, or Call Us

Part Number	Size	Price
BE6240-04	1/4"	26.17
BE6240-06	3/8"	26.17
BE6240-08	1/2"	32.91
BE6240-12	3/4"	47.25
BE6240-16	1"	69.19
BE6240-32	2"	147.25

St/St Lever Ball Valve - Flanged



HG QC: 2953



5 More Variants available online, or Call Us

Part Number	Size	Weight (Kg)	Price
BE6350-08	1/2"	2.6	113.92
BE6350-12	3/4"	3.2	135.01
BE6350-16	1"	4.5	172.98
BE6350-20	1.1/4"	5.5	257.37
BE6350-24	1.1/2"	6.7	296.67

7

For our new range of RJT Hygienic Fittings see Section 7

St/St Three Piece Lever Ball Valve



CQ QC: 2954



Full Range Shown Here

Part Number	Size	Price
SSV304	1/4"	25.34
SSV306	3/8"	25.34
SSV308	1/2"	26.16
SSV312	3/4"	34.02
SSV316	1"	46.83
SSV320	1.1/4"	64.06
SSV324	1.1/2"	102.77
SSV332	2"	132.30
SSV340	2.1/2"	276.99
SSV348	3"	407.12
SSV364	4"	640.07

BE Range - St/St Three Piece Lever Ball Valve



HG QC: 2955



▶▶▶ 1 More Variant available online, or Call Us

Part Number	Size	Price
BE6300-04	1/4"	25.02
BE6300-06	3/8"	25.02
BE6300-08	1/2"	26.78
BE6300-12	3/4"	38.55
BE6300-16	1"	56.20
BE6300-20	1.1/4"	76.87
BE6300-24	1.1/2"	135.18
BE6300-32	2"	158.76
BE6300-64	4"	768.08

St/St Three Way L Port Ball Valve



HG QC: 2956



▶▶▶ Full Range Shown Here

Part Number	Size	Price
SSVLP04	1/4"	71.59
SSVLP06	3/8"	71.59
SSVLP08	1/2"	79.03
SSVLP12	3/4"	99.63
SSVLP16	1"	130.63
SSVLP20	1.1/4"	193.33
SSVLP24	1.1/2"	250.00
SSVLP32	2"	410.50

St/St Three Way T Port Ball Valve



HG QC: 2958



▶▶▶ Full Range Shown Here

Part Number	Size	Price
SSVTP04	1/4"	71.59
SSVTP06	3/8"	71.59
SSVTP08	1/2"	79.03
SSVTP12	3/4"	101.13
SSVTP16	1"	128.33
SSVTP20	1.1/4"	193.33
SSVTP24	1.1/2"	250.00
SSVTP32	2"	410.50

St/St T Handle Lever Ball Valve



OH QC: 2960



▶▶▶ Full Range Shown Here

Part Number	Size	Price
SSVT104	1/4"	20.41
SSVT106	3/8"	22.85
SSVT108	1/2"	26.36
SSVT112	3/4"	28.13
SSVT116	1"	37.65

Product ▶ St/Steel Gate Needle Check & Strainer Valves

St/St Gate Valve



OG QC: 2961



▶▶▶ Full Range Shown Here

Part Number	Size	Price
SSVGA06	3/8"	43.81
SSVGA08	1/2"	48.95
SSVGA12	3/4"	58.96
SSVGA16	1"	72.39
SSVGA20	1.1/4"	98.97
SSVGA24	1.1/2"	136.61
SSVGA32	2"	165.53

St/St Needle Valve - BSPP



CQ QC: 2963



▶▶▶ Full Range Shown Here

Part Number	Size	Price
SSVNE04	1/4"	65.72
SSVNE06	3/8"	55.09
SSVNE08	1/2"	92.70
SSVNE12	3/4"	122.73
SSVNE16	1"	180.39

BE Range - St/St Needle Valve - BSPP



HG QC: 2964



▶▶▶ Full Range Shown Here

Part Number	Size	Price
BE8720-04	1/4"	55.06
BE8720-06	3/8"	72.74
BE8720-08	1/2"	94.21
BE8720-12	3/4"	142.86
BE8720-16	1"	213.06

St/St Needle Valve - Compression Ends



CQ QC: 2965



▶▶▶ Full Range Shown Here

Part Number	Tube O/D	Price
SSVNEICOM04	1/4"	85.76

St/St Spring Check Valve



HG QC: 2966



▶▶▶ Full Range Shown Here

Part Number	Size	Price
SSVC04	1/4"	44.00
SSVC06	3/8"	31.59
SSVC08	1/2"	35.69
SSVC12	3/4"	43.77
SSVC16	1"	50.77
SSVC20	1.1/4"	68.51
SSVC24	1.1/2"	93.25
SSVC32	2"	163.30

BE Range - Stainless Steel Spring Check Valve



HG QC: 2967



▶▶▶ 2 More Variants available online, or Call Us

Part Number	Size	Price
BE6850-04	1/4"	42.82
BE6850-06	3/8"	42.82
BE6850-08	1/2"	42.82
BE6850-12	3/4"	47.72
BE6850-16	1"	62.31
BE6850-32	2"	169.09



See our website for all the sizes we stock

St/St Swing Check Valve



CQ QC: 2968

▶▶▶ 2 More Variants available online, or Call Us

Part Number	Size	Price
SSVSC08	1/2"	39.98
SSVSC12	3/4"	36.70
SSVSC16	1"	57.61
SSVSC20	1.1/4"	91.52
SSVSC24	1.1/2"	101.96
SSVSC32	2"	133.89

BE Range - St/St Swing Check Valve



HG QC: 2969



▶▶▶ 1 More Variant available online, or Call Us

Part Number	Size	Price
BE6800-08	1/2"	35.82
BE6800-16	1"	57.42
BE6800-20	1.1/4"	82.87
BE6800-24	1.1/2"	101.63
BE6800-32	2"	127.20

St/St Swing Check Valve - Wafer Type



HG QC: 2971



▶▶▶ 8 More Variants available online, or Call Us

Part Number	Size	Price
BE6820-32	2"	257.37

St/St Y Strainer



OG QC: 5332



▶▶▶ Full Range Shown Here

Part Number	Size	Price
SSVS04	1/4"	44.84
SSVS06	3/8"	31.67
SSVS08	1/2"	28.27
SSVS12	3/4"	34.39
SSVS16	1"	48.55
SSVS20	1.1/4"	65.44
SSVS24	1.1/2"	76.41
SSVS32	2"	131.40

BE Range - St/St Y Strainer



HG QC: 2973



▶▶▶ 4 More Variants available online, or Call Us

Part Number	Size	Price
BE6900-08	1/2"	27.47
BE6900-32	2"	127.84

Product ▶ Butterfly Valves

Butterfly Valve - Lugged & Tapped



HG QC: 2974

▶▶▶ Full Range Shown Here

Part Number	Size	Price
VLTB32	2"	87.33
VLTB40	2.1/2"	99.07
VLTB48	3"	112.73
VLTB64	4"	154.87
VLTB80	5"	219.97
VLTB96	6"	246.83

Butterfly Valve - Wafer Pattern



HG QC: 2975

▶▶▶ Full Range Shown Here

Part Number	Size	Price
VWPB32	2"	66.03
VWPB40	2.1/2"	79.73
VWPB48	3"	88.67
VWPB64	4"	116.53
VWPB80	5"	175.90
VWPB96	6"	208.67

St/St Butterfly Valve - Wafer Pattern



HG QC: 2978



▶▶▶ 4 More Variants available online, or Call Us

Part Number	Size	Price
BE6911-48	3"	354.40
BE6911-64	4"	443.01
BE6911-80	5"	586.45

Product ▶ Angle Seat Valves

Bronze Angle Seat Valve N.C



OI QC: 2979



▶▶▶ Full Range Shown Here

Part Number	Actuator Dia	Thread BSPP	Price
J9SPG1603	50mm	3/8"	178.91
J9SPG1604	50mm	1/2"	178.91
J9SPG1605	50mm	3/4"	185.63
J9SPG1806	63mm	1"	254.87
J9SPG2107	90mm	1.1/4"	382.81
J9SPG2108	90mm	1.1/2"	410.71
J9SPG2309	110mm	2"	587.69

St/St Angle Seat Valve N.C



OI QC: 2980



▶▶▶ Full Range Shown Here

Part Number	Actuator Dia	Thread BSPP	Price
J4SPG1603	50mm	3/8"	277.97
J4SPG1604	50mm	1/2"	277.97
J4SPG1605	50mm	3/4"	303.93
J4SPG1805	63mm	3/4"	352.03
J4SPG1806	63mm	1"	358.76
J4SPG2106	90mm	1"	463.59
J4SPG2107	90mm	1.1/4"	519.39
J4SPG2108	90mm	1.1/2"	552.07
J4SPG2309	110mm	2"	721.37

Product ▶ Actuated Ball Valves

Pneumatic Axial Valve



OI QC: 3011



▶▶▶ Full Range Shown Here

Part Number	Function	NO/NC	Thread BSPP	Price
VDA20003	D/A	either	3/8"	106.50
VDA20004	D/A	either	1/2"	120.44
VDA20005	D/A	either	3/4"	142.26
VDA20006	D/A	either	1"	160.60
VDA20007	D/A	either	1.1/4"	213.84
VDA20008	D/A	either	1.1/2"	267.91
VDA20009	D/A	either	2"	369.21
VNC20004	S/R	N/C	1/2"	110.86
VNC20006	S/R	N/C	1"	154.98
VNC20008	S/R	N/C	1.1/2"	266.25
VNA20004	S/R	N/O	1/2"	168.45
VNA20006	S/R	N/O	1"	227.81
VNA20008	S/R	N/O	1.1/2"	285.41

Brass Ball Valves Single Acting



HG QC: 3012



▶▶▶ Full Range Shown Here

Part Number	BSPP Thread	Price
LSA04	1/4"	186.55
LSA06	3/8"	186.55
LSA08	1/2"	186.55
LSA12	3/4"	195.35
LSA16	1"	210.14
LSA20	1.1/4"	236.79
LSA24	1.1/2"	322.39
LSA32	2"	366.40

Brass Ball Valves Double Acting



HG QC: 3013



Full Range Shown Here

Part Number	BSPP Thread	Price
LDA04	1/4"	149.80
LDA06	3/8"	149.80
LDA08	1/2"	149.80
LDA12	3/4"	165.04
LDA16	1"	179.38
LDA20	1.1/4"	198.06
LDA24	1.1/2"	215.34
LDA32	2"	287.00

Stainless Steel Ball Valves Single Acting



HG QC: 3016



Full Range Shown Here

Part Number	BSPP Thread	Price
LSA08SS	1/2"	222.69
LSA12SS	3/4"	313.87
LSA16SS	1"	295.14
LSA20SS	1.1/4"	341.26
LSA24SS	1.1/2"	493.01
LSA32SS	2"	573.79

Stainless Steel Ball Valves Double Acting



HG QC: 3017



Full Range Shown Here

Part Number	BSPP Thread	Price
LDA08SS	1/2"	211.06
LDA12SS	3/4"	250.55
LDA16SS	1"	277.24
LDA20SS	1.1/4"	328.70
LDA24SS	1.1/2"	427.57
LDA32SS	2"	510.53

Electric Actuated Brass Ball Valve AC or DC - 24V



OL QC: 3020



1 More Variant available online, or Call Us

Part Number	BSPP Female Thread	Price
LEAV0824	1/2"	601.17
LEAV1224	3/4"	609.67
LEAV1624	1"	704.99
LEAV2424	1.1/2"	912.64
LEAV3224	2"	956.59

Electric Actuated Brass Ball Valve AC or DC - 110V



OL QC: 3021



2 More Variants available online, or Call Us

Part Number	BSPP Female Thread	Price
LEAV08110	1/2"	601.17
LEAV12110	3/4"	609.67
LEAV24110	1.1/2"	912.64
LEAV32110	2"	956.59

Electric Actuated Brass Ball Valve AC or DC - 240V



OL QC: 3022



1 More Variant available online, or Call Us

Part Number	BSPP Female Thread	Price
LEAV08240	1/2"	601.17
LEAV12240	3/4"	609.67
LEAV16240	1"	704.99
LEAV20240	1.1/4"	916.82
LEAV24240	1.1/2"	912.64

PNEUMAX
vacuum

24

New range of Pneumax Vacuum cups and valves see Section 24

Solenoid Process Valves

General Purpose 2/2 N/C Direct Acting Solenoid Valves 1/8"

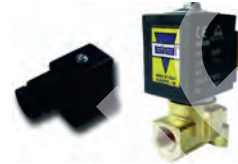


OJ QC: 2992

Full Range Shown Here

Part Number	Coil Voltage	Orifice (mm)	Pressure (bar)	Replacement Coil	Price
L172V03-02-24	24DC	2	0-6	B10AL	37.23
L172V03-02-110	110/50	2	0-15	B10AC	45.15
L172V03-02-230	230/50	2	0-15	B10AA	37.23

General Purpose 2/2 N/C Direct Acting Solenoid Valves 1/4"

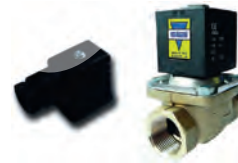


OJ QC: 2992

Full Range Shown Here

Part Number	Coil Voltage	Orifice (mm)	Pressure (bar)	Replacement Coil	Price
L121V02-04-24	24DC	2.3	0-16	A30AL	48.77
L121V02-04-110	110/50	2.3	0-20	A30AC	48.77
L121V02-04-230	230/50	2.3	0-20	A30AA	48.77

General Purpose 2/2 N/C Pilot Operated Solenoid Valves 3/8"



OJ QC: 2993

Full Range Shown Here

Part Number	Coil Voltage	Orifice (mm)	Pressure (bar)	Replacement Coil	Price
L133B10-06-230	230/50	10	0-10	A30AA	84.05

General Purpose 2/2 N/C Pilot Operated Solenoid Valves 1/2"



OJ QC: 2993

Full Range Shown Here

Part Number	Coil Voltage	Orifice (mm)	Pressure (bar)	Replacement Coil	Price
L133B07-08-24	24DC	12.5	0-3	130AL	85.17
L133B07-08-110	110/50	12.5	0-10	130AC	85.17
L133B07-08-230	230/50	12.5	0-10	130AA	85.17

General Purpose 2/2 N/C Pilot Operated Solenoid Valves 3/4"



OJ QC: 2993

Full Range Shown Here

Part Number	Coil Voltage	Orifice (mm)	Pressure (bar)	Replacement Coil	Price
L133B07-12-24	24DC	17	0-3	130AL	108.35
L133B07-12-110	110/50	17	0-10	130AC	108.35
L133B07-12-230	230/50	17	0-10	130AA	108.35

General Purpose 2/2 N/C Pilot Operated Solenoid Valves 1"



OJ QC: 2993

General Purpose 2/2 N/O Pilot Operated Solenoid Valves 3/8" - 2"



OK QC: 2995

Steam / Water 2/2 N/C Pilot Operated Solenoid Valves 1/2" - 1"



OJ QC: 2997

Full Range Shown Here

Part Number	Coil Voltage	Orifice (mm)	Pressure (bar)	Replacement Coil	Price
L133B06-16-24	24DC	24	0-3	923AL	172.69
L133B06-16-110	110/50	24	0-10	923AC	172.69
L133B06-16-230	230/50	24	0-10	923AA	172.69

Full Range Shown Here

Part Number	BSPP Thread	Coil Voltage	Pressure (bar)	Coil Type	Price
L282B01-06-24	3/8"	24v DC	0.35 - 12	C10AL	94.02
L282B01-06-2450	3/8"	24/50	0.35 - 12	B10AE	94.02
L282B01-06-110	3/8"	110/50	0.35 - 12	B10AC	94.02
L282B01-06-230	3/8"	230/50	0.35 - 12	B10AA	94.02
L282B01-08-24	1/2"	24v DC	0.35 - 12	C10AL	92.39
L282B01-08-2450	1/2"	24/50	0.35 - 12	B10AE	92.39
L282B01-08-110	1/2"	110/50	0.35 - 12	B10AC	92.39
L282B01-08-230	1/2"	230/50	0.35 - 12	B10AA	92.39
L282B01-12-24	3/4"	24v DC	0.35 - 12	C10AL	117.76
L282B01-12-2450	3/4"	24/50	0.35 - 12	B10AE	117.76
L282B01-12-110	3/4"	110/50	0.35 - 12	B10AC	117.76
L282B01-12-230	3/4"	230/50	0.35 - 12	B10AA	117.76
L282B01-16-24	1"	24v DC	0.35 - 12	C10AL	165.33
L282B01-16-24-50	1"	24/50	0.35 - 12	B10AE	165.31
L282B01-16-110	1"	110/50	0.35 - 12	B10AC	165.31
L282B01-16-230	1"	230/50	0.35 - 12	B10AA	165.31
L280B48-24-24	1.1/2"	24v DC	0.5 - 10	A30AL	364.92
L280B48-24-2450	1.1/2"	24/50	0.5 - 10	A30AE	364.92
L280B48-24-110	1.1/2"	110/50	0.5 - 10	A30AC	364.92
L280B48-24-230	1.1/2"	230/50	0.5 - 10	A30AA	364.92
L280B48-32-24	2"	24v DC	0.5 - 10	A30AL	411.61
L280B48-32-2450	2"	24/50	0.5 - 10	A30AE	411.61
L280B48-32-110	2"	110/50	0.5 - 10	A30AC	411.61
L280B48-32-230	2"	230/50	0.5 - 10	A30AA	411.61

Full Range Shown Here

Part Number	BSPP Thread	Coil Voltage	Pressure (bar)	Replacement Coil	Price
L153D07-08-24	1/2"	24AC	0-8	134AE	146.67
L153D07-08-110	1/2"	110/50	0-8	134AC	146.67
L153D07-08-230	1/2"	230/50	0-8	134AA	146.67
L153D07-12-24	3/4"	24AC	0-8	134AE	171.43
L153D07-12-110	3/4"	110/50	0-8	134AC	171.43
L153D07-12-230	3/4"	230/50	0-8	134AA	171.43
L153D5-16-24	1"	24AC	0-8	934AE	265.67
L153D5-16-110	1"	110/50	0-8	934AC	265.67
L153D5-16-230	1"	230/50	0-8	934AA	265.67

General Purpose 2/2 N/C Pilot Operated Solenoid Valves 3/8" - 2"



OK QC: 2994

Full Range Shown Here

Part Number	BSPP Thread	Coil Voltage	Pressure (bar)	Coil Type	Price
L182D01-06-24	3/8"	24v DC	0.35 - 16	B10AL	73.85
L182D01-06-2450	3/8"	24/50	0.35 - 16	B10AE	73.85
L182D01-06-110	3/8"	110/50	0.35 - 16	B10AC	73.85
L182D01-06-230	3/8"	230/50	0.35 - 16	B10AA	73.85
L182D01-08-24	1/2"	24v DC	0.35 - 16	B10AL	75.08
L182D01-08-2450	1/2"	24/50	0.35 - 16	B10AE	75.08
L182D01-08-110	1/2"	110/50	0.35 - 16	B10AC	75.08
L182D01-08-230	1/2"	230/50	0.35 - 16	B10AA	75.08
L182D01-12-24	3/4"	24v DC	0.35 - 12	B10AL	96.50
L182D01-12-2450	3/4"	24/50	0.35 - 12	B10AE	96.50
L182D01-12-110	3/4"	110/50	0.35 - 12	B10AC	96.50
L182D01-12-230	3/4"	230/50	0.35 - 12	B10AA	96.50
L182D01-16-24	1"	24v DC	0.35 - 12	B10AL	149.64
L182D01-16-2450	1"	24/50	0.35 - 12	B10AE	149.64
L182D01-16-110	1"	110/50	0.35 - 12	B10AC	149.64
L182D01-16-230	1"	230/50	0.35 - 12	B10AA	149.64
L180B48-24-24	1.1/2"	24v DC	0.5 - 10	A30AL	307.55
L180B48-24-110	1.1/2"	110/50	0.5 - 10	A30AC	297.17
L180B48-24-2450	1.1/2"	24/50	0.5 - 10	A30AE	307.55
L180B48-32-24	2"	24v DC	0.5 - 10	A30AL	359.55
L180B48-32-2450	2"	24/50	0.5 - 10	A30AE	359.55
L180B48-32-110	2"	110/50	0.5 - 10	A30AC	359.55
L180B48-32-230	2"	230/50	0.5 - 10	A30AA	359.55

Steam / Water 2/2 N/C Pilot Operated Solenoid Valves 1/2" - 1"

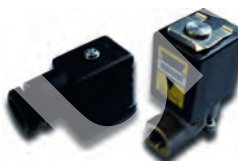


OJ QC: 2996

Full Range Shown Here

Part Number	BSPP Thread	Coil Voltage	Pressure (bar)	Replacement Coil	Price
L145R2-08-24	1/2"	24AC	0.4-8	614AE	137.77
L145R2-08-110	1/2"	110/50	0.4-8	614AC	137.77
L145R2-08-230	1/2"	230/50	0.4-8	614AA	137.77
L145R4-12-230	3/4"	230/50	0.4-6	534AA	177.63
L145R4-12-24	3/4"	24AC	0.4-6	534AE	173.58
L145R4-12-110	3/4"	110/50	0.4-6	534AC	177.63
L145R2-16-24	1"	24AC	0.4-6	534AE	238.61
L145R2-16-110	1"	110/50	0.4-6	534AC	244.72
L145R2-16-230	1"	230/50	0.4-6	534AA	244.72
L153D07-08-24	1/2"	24AC	0-8	134AE	146.67
L153D07-08-110	1/2"	110/50	0-8	134AC	146.67
L153D07-08-230	1/2"	230/50	0-8	134AA	146.67
L153D07-12-24	3/4"	24AC	0-8	134AE	171.43
L153D07-12-110	3/4"	110/50	0-8	134AC	171.43
L153D07-12-230	3/4"	230/50	0-8	134AA	171.43
L153D5-16-24	1"	24AC	0-8	934AE	265.67
L153D5-16-110	1"	110/50	0-8	934AC	265.67
L153D5-16-230	1"	230/50	0-8	934AA	265.67

Stainless Steel 2/2 N/C Direct Acting Solenoid Valve 1/8"



OK QC: 2998

1 More Variant available online, or Call Us

Part Number	BSPP Thread	Coil Voltage	Pressure (bar)	Replacement Coil	Price
L172V07-02-245S	1/8"	24VDC	0-12	B12AL	80.58
L172V07-02-230SS	1/8"	230/50	0-20	B12AA	92.80

Stainless Steel 2/2 N/C Direct Acting Solenoid Valve 1/4"



OK QC: 2999

1 More Variant available online, or Call Us

Part Number	BSPP Thread	Coil Voltage	Pressure (bar)	Replacement Coil	Price
L176V07-04-245S	1/4"	24VDC	0-4	B12ALS	91.64
L176V07-04-230SS	1/4"	230/50	0-12	B12AA	91.64

Stainless Steel 2/2 N/C Pilot Operated Solenoid Valve 3/8" - 1"



OK QC: 3000

1 More Variant available online, or Call Us

Part Number	BSPP Thread	Coil Voltage	Pressure (bar)	Replacement Coil	Price
L182V09-06-24	3/8"	24VDC	0.35 - 16	B12AL	283.05
L182V09-06-110	3/8"	110/50	0.35 - 16	B12AC	262.78
L182V09-06-230	3/8"	230/50	0.35 - 16	B12AA	283.05
L182V09-08-24	1/2"	24VDC	0.35 - 16	B12AL	305.97
L182V09-08-110	1/2"	110/50	0.35 - 16	B12AC	305.97
L182V09-08-230	1/2"	230/50	0.35 - 16	B12AA	297.40
L182V09-12-24	3/4"	24VDC	0.35 - 12	B12AL	371.37
L182V09-12-110	3/4"	110/50	0.35 - 12	B12AC	371.37
L182V09-12-230	3/4"	230/50	0.35 - 12	B12AA	349.68
L182V09-16-24	1"	24VDC	0.35 - 12	B12AL	443.37
L182V09-16-110	1"	110/50	0.35 - 12	B12AC	443.37

Stainless Steel 2/2 N/O Pilot Operated Solenoid Valve 3/8" - 1"



OK QC: 3001



Full Range Shown Here

Part Number	BSPP Thread	Coil Voltage	Pressure (bar)	Replacement Coil	Price
L282V09-06-24	3/8"	24VDC	0.35 - 12	C12AL	326.11
L282V09-06-110	3/8"	110/50	0.35 - 12	B12AC	311.35
L282V09-06-230	3/8"	230/50	0.35 - 12	B12AA	326.11
L282V09-08-24	1/2"	24VDC	0.35 - 12	C12AL	320.43
L282V09-08-110	1/2"	110/50	0.35 - 12	B12AC	320.43
L282V09-08-230	1/2"	230/50	0.35 - 12	B12AA	305.97
L282V09-12-24	3/4"	24VDC	0.35 - 10	C12AL	388.92
L282V09-12-110	3/4"	110/50	0.35 - 10	B12AC	388.92
L282V09-12-230	3/4"	230/50	0.35 - 10	B12AA	371.37
L282V09-16-24	1"	24VDC	0.35 - 10	C12AL	465.17
L282V09-16-110	1"	110/50	0.35 - 10	B12AC	465.17
L282V09-16-230	1"	230/50	0.35 - 10	B12AA	443.37

Replacement Coils



OK QC: 3002



7 More Variants available online, or Call Us

Part Number	Coil Voltage	Plug	Price
A30AL	24DC	182	33.55
A30AC	110/50	182	33.55
A30AA	230/50	182	33.55
B10AL	24DC	122	27.70
B10AC	110/50	122	27.70
B10AA	230/50	122	27.70
B12ALS	24VDC	122	30.13
B12AC	110/50	122	30.13
130AL	24DC	182	52.17
130AC	110/50	182	52.17
130AA	230/50	182	52.17
134AL	24DC	182	67.54
134AC	110/50	182	67.54
134AA	230/50	182	67.54
530AL	24DC	182	42.25
530AC	110/50	182	42.25
534AL	24DC	182	52.57
534AC	110/50	182	52.57
534AA	230/50	182	52.57
610AL	24DC	122	30.30
614AC	110/50	122	37.31
614AA	230/50	122	37.31
923AL	24DC	182	75.33
923AC	110/50	182	75.33
923AA	230/50	182	75.33
934AL	24DC	182	92.36
934AC	110/50	182	92.36
934AA	230/50	182	92.36

DIN Plugs



OJ QC: 3003



Full Range Shown Here

Part Number	Price
122	1.77
182	1.77



New range of Titan Filters, Regulators and Lubricators see Section 22

Product

Flow Indication & Metering

Sight Glass / Flow Indicator - 400 Series - With Ball

OM QC: 3024



Full Range Shown Here

Part Number	Female Thread	Flow LPH (Min.)	Flow LPH (Max.)	Price
FIG-176600-2	1/4" BSPP	30	200	169.27
FIG-176605-1	3/8" BSPT	50	450	182.22
FIG-176610-2	1/2" BSPP	60	600	184.48
FIG-176615-2	3/4" BSPP	120	1600	239.63
FIG-176620-2	1" BSPP	300	1600	346.13

Bronze Sight Glass/Flow Indicator with Ball

HG QC: 3025



Full Range Shown Here

Part Number	Size	Price
BE1302-08	1/2"	128.80
BE1302-12	3/4"	157.20
BE1302-16	1"	176.74

Sight Glass / Flow Indicator - 400 Series - With Spinner

ON QC: 3026



3 More Variants available online, or Call Us

Part Number	Female Thread	Flow LPH (Min.)	Flow LPH (Max.)	Price
FIG-170310-2	1/2" BSPP	60	600	161.25
FIG-170320-2	1" BSPP	300	1600	326.80

Sight Glass / Flow Indicator - 400 Series - With Spinner (Stainless)

ON QC: 3027



2 More Variants available online, or Call Us

Part Number	Female Thread	Flow LPH (Min.)	Flow LPH (Max.)	Price
FIS-140305-2	3/8" BSPP	50	450	404.17
FIS-140315-1	3/4" BSPT	120	1600	429.73
FIS-140320-2	1" BSPP	300	1600	422.22

Brass Flow Indicator With Twin Rotor

HG QC: 3028



Full Range Shown Here

Part Number	Size	Price
BE1316-12	3/4"	186.07
BE1316-16	1"	223.82
BE1316-20	1.1/4"	285.12
BE1316-24	1.1/2"	305.11
BE1316-32	2"	528.47

Flow Switch 3/8"

OO QC: 3029

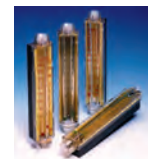


Full Range Shown Here

Part Number	Size	Range	MAX TEMP	Price
MR010GM020	G 3/8"	5 - 20 l/min	120 deg c	329.34

Parker LoFlow Air Flowmeters

II QC: 3030



Full Range Shown Here

Part Number	L/m	BSPT Male Thread	Price
LF801450	1.1 - 8.0	1/4" - 3/4"	168.86
LF802455	5 - 50	3/4" - 3/4"	160.06
LF802452	20 - 135	3/4" - 3/4"	160.06

Parker LoFlow Water Flowmeters



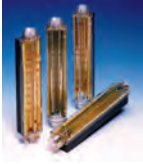
OP QC: 3031



Full Range Shown Here

Part Number	L/m	BSPT Male Thread	Price
LF802412	0.2 - 2.0	3/4" - 3/4"	160.06
LF802413	2.0 - 10.0	3/4" - 3/4"	160.06
LF802414	3.0 - 22	3/4" - 3/4"	160.06

Parker LoFlow Oil Flowmeters



OP QC: 3032



Full Range Shown Here

Part Number	L/m	BSPT Male Thread	Price
LF802432	0.1 - 0.9	3/4" - 3/4"	160.06
LF802434	1.0 - 9.0	3/4" - 3/4"	160.06

King Air Flowmeters



OP QC: 3033

Full Range Shown Here

Part Number	Capacity (cfm)	Scale mm	Valve	NPT Thread	Price
K7511232B-07	20	50	NO	1/2" F	207.99
K75301115C15	175	127	YES	1/2" M	359.94

King Water Flowmeter



OP QC: 3034

Full Range Shown Here

Part Number	Capacity (Lpm)	Scale mm	Valve	NPT Thread	Price
K75302315C08	19	127	YES	1/2" M	238.78

AHS Single Jet Cold Water Meter



OP QC: 3035



2 More Variants available online, or Call Us

Part Number	Description	Size (mm)	Flow Qn m3/hr	Price
ALSJ-SDC20	Single Jet	20	2.5	43.90

AHS Multi Jet Cold Water Meter



OP QC: 3036



1 More Variant available online, or Call Us

Part Number	Description	Size (mm)	Flow Qn m3/hr	Price
BT-SDC15	Multi Jet	15	1.5	58.76
BT-SDC20	Multi Jet	20	2.5	67.57
BT-SDC25	Multi Jet	25	3.5	116.46



See our website for all the sizes we stock

High quality hose reels for air, oil and water

- Supplied with a sturdy steel wall/ceiling mounting bracket and 1m connection hose
- Max temp: 60 deg C
- A choice of 2 outlet connections - 3/8" male or 1/4" male
- Automated rewind for neat and tidy storage
- Max pressure: 20bar/300psi



Bulk orders
welcome



Conforms to
European standards



Can be branded
with your logo

hosereels 

gp-air.co.uk

