

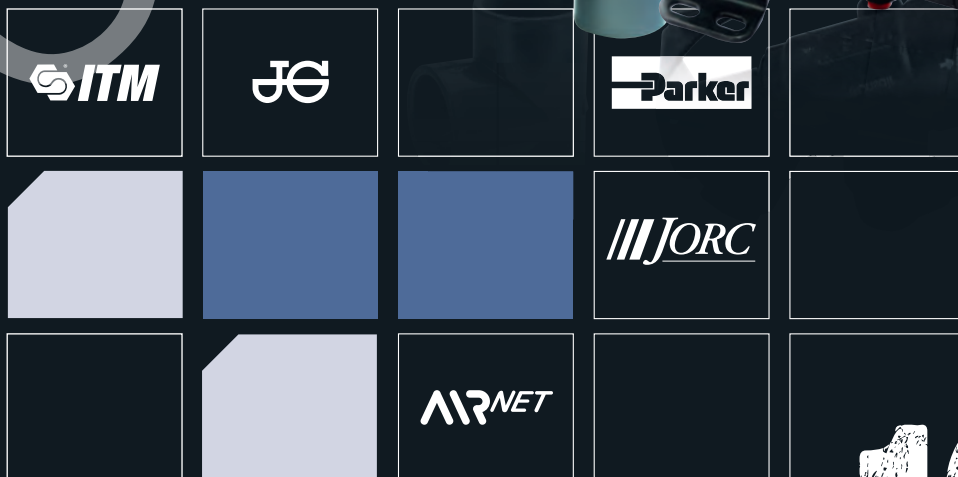
Ring Main Systems

PRODUCTS

ABS Imperial Pipe and Fittings Range	1
UPVC Imperial Pipe and Fittings Range	3
UPVC Metric Pipe and Fittings Range	8
ABS and UPVC Glues, Cleaners and Tools	10
Transair Ringmain System Air and Vacuum Range	10
Airnet Pipework System	14
John Guest Ringmain System Air and Vacuum Range	18
Drains	20
Malleable Pipe Jointing and Sealing Products	20
Thread, Nut and Studlock Pipe Seal and Retainers	21



BRANDS



Product ▶ **ABS Imperial**

ITM UPVC/ABS Trade Counter Display Figure



T9 QC: 7165



▶▶▶ Full Range Shown Here

Part Number	Description	Price
ITM-MAN-DISPLAY	Display Figure & T Stand	85.20

ABS Class C Pipe Plain End 3 Mtr Length Stocked

HX QC: 4699



▶▶▶ Full Range Shown Here

Part Number	Size	Pipe O/D (mm)	Pipe I/D (mm)	Price
ITM-11P04CPE-3	1"	33.6	29.6	25.93
ITM-11P05CPE-3	1 1/4"	42.2	37.2	43.53
ITM-11P06CPE-3	1 1/2"	48.3	42.7	55.38
ITM-11P07CPE-3	2"	60.3	53.1	74.49
ITM-11P08CPE-3	2 1/2"	75.2	65.2	128.83
ITM-11P09CPE-3	3"	88.9	78.5	153.67
ITM-11P10CPE-3	4"	114.3	101.1	253.15
ITM-11P12CPE-3	6"	168.3	148.5	595.85

ABS Class C Pipe Plain End 6 Mtr Length

HX QC: 4698



▶▶▶ 4 More Variants available online, or Call Us

Part Number	Size	Pipe O/D (mm)	Pipe I/D (mm)	Price
ITM-11P04CPE	1"	33.6	29.6	48.52
ITM-11P06CPE	1.1/2"	48.3	42.7	103.64
ITM-11P07CPE	2"	60.3	53.1	139.38
ITM-11P10CPE	4"	114.3	101.1	473.73

ABS Class E Pipe Plain End 3 Mtr Length Stocked

HX QC: 4701



▶▶▶ Full Range Shown Here

Part Number	Size	Pipe O/D (mm)	Pipe I/D (mm)	Price
ITM-11P02EPE-3	1/2"	21.4	17.4	19.78
ITM-11P03EPE-3	3/4"	26.7	21.7	30.53
ITM-11P04EPE-3	1"	33.6	27.4	40.12
ITM-11P05EPE-3	1 1/4"	42.2	34.4	59.88
ITM-11P06EPE-3	1 1/2"	48.3	39.3	79.09
ITM-11P07EPE-3	2"	60.3	49.1	98.91

ABS Class E Pipe Plain End 6 Mtr Length

HX QC: 4700



▶▶▶ 4 More Variants available online, or Call Us

Part Number	Size	Pipe O/D (mm)	Pipe I/D (mm)	Price
ITM-11P04EPE	1"	33.6	27.4	75.06
ITM-11P06EPE	1.1/2"	48.3	39.3	148.00



ABS Plain Socket

HX QC: 4702



▶▶▶ 3 More Variants available online, or Call Us

Part Number	Tube NB	Length (mm)	Price
ITM-1101103	3/4"	41	1.38
ITM-1101104	1"	47	1.60
ITM-1101105	1.1/4"	55	2.77
ITM-1101106	1.1/2"	65	3.26
ITM-1101107	2"	79	4.64
ITM-1101108	2.1/2"	92	10.07
ITM-1101109	3"	107	18.52
ITM-1101110	4"	128	26.36

ABS Plain 90 deg Elbow

HX QC: 4703



▶▶▶ 1 More Variant available online, or Call Us

Part Number	Tube NB	Price
ITM-1103103	3/4"	1.95
ITM-1103104	1"	2.71
ITM-1103105	1.1/4"	4.64
ITM-1103106	1.1/2"	6.04
ITM-1103107	2"	9.08
ITM-1103108	2.1/2"	17.49
ITM-1103109	3"	26.22
ITM-1103110	4"	39.12
ITM-1103111	5"	90.18
ITM-1103112	6"	156.79

ABS Plain 90 deg Short Radius Bend

HX QC: 4704



▶▶▶ 3 More Variants available online, or Call Us

Part Number	Tube NB	Price
ITM-1105104	1"	9.85
ITM-1105105	1.1/4"	14.08
ITM-1105107	2"	23.38
ITM-1105108	2.1/2"	51.52
ITM-1105109	3"	59.80
ITM-1105110	4"	98.51

ABS Plain 45 deg Elbow

HX QC: 4705



▶▶▶ 3 More Variants available online, or Call Us

Part Number	Tube NB	Price
ITM-1104103	3/4"	3.20
ITM-1104104	1"	4.02
ITM-1104105	1.1/4"	5.83
ITM-1104107	2"	10.07
ITM-1104108	2.1/2"	15.89
ITM-1104110	4"	49.12
ITM-1104111	5"	83.25
ITM-1104112	6"	101.97

ABS Plain Equal Tee

HX QC: 4706



▶▶▶ 1 More Variant available online, or Call Us

Part Number	Tube NB	Price
ITM-1106103	3/4"	2.57
ITM-1106104	1"	3.61
ITM-1106105	1.1/4"	5.13
ITM-1106106	1.1/2"	7.57
ITM-1106107	2"	11.51
ITM-1106108	2.1/2"	19.98
ITM-1106109	3"	33.65
ITM-1106110	4"	49.41
ITM-1106111	5"	131.12
ITM-1106112	6"	172.74

ABS Plain Y Piece/45 deg Tee

HX QC: 4707



▶▶▶ 5 More Variants available online, or Call Us

Part Number	Tube NB	Price
ITM-1107107	2"	24.47

ABS Plain Equal Socket Union



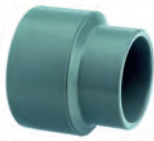
HX QC: 4708



▶▶▶ 3 More Variants available online, or Call Us

Part Number	Tube NB	Price
ITM-1102104	1"	9.45
ITM-1102105	1.1/4"	11.51
ITM-1102106	1.1/2"	15.89
ITM-1102107	2"	20.76
ITM-1102109	3"	76.86
ITM-1102110	4"	103.51

ABS Plain Reducing Socket



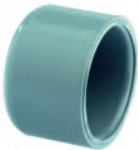
HX QC: 4709



▶▶▶ 7 More Variants available online, or Call Us

Part Number	Tube NB	Price
ITM-116010807	2.1/2" x 2"	17.65

ABS Plain Cap



HX QC: 4711



▶▶▶ 8 More Variants available online, or Call Us

Part Number	Tube NB	Length (mm)	Price
ITM-1122107	2"	38	5.13
ITM-1122109	3"	51	15.20
ITM-1122111	5"	76	41.30

ABS Plain Reducing Bush



HX QC: 4712



▶▶▶ 17 More Variants available online, or Call Us

Part Number	Tube NB	Price
ITM-110910603	1.1/2" x 3/4"	2.71
ITM-110910604	1.1/2" x 1"	2.71
ITM-110910704	2" x 1"	3.61
ITM-110910806	2.1/2" x 1.1/2"	6.99
ITM-110910907	3" x 2"	11.10
ITM-110911312	8" x 6"	122.27

ABS Plain Stub Flange Serrated Face



HX QC: 4713



▶▶▶ 6 More Variants available online, or Call Us

Part Number	Tube NB	Length (mm)	Price
ITM-1111106	1.1/2"	34	4.93
ITM-1111107	2"	41	7.57
ITM-1111109	3"	56	14.78
ITM-1111110	4"	66	19.15
ITM-1111112	6"	95	49.75

ABS Plain Full Face Flange NP10/16



HX QC: 4714



▶▶▶ 6 More Variants available online, or Call Us

Part Number	Tube NB	Price
ITM-1114106Z	1.1/2"	11.78
ITM-1114108Z	2.1/2"	22.67
ITM-1114110Z	4"	33.85

ABS Blank Flange NP10/16



HX QC: 4716



▶▶▶ 7 More Variants available online, or Call Us

Part Number	Tube NB	Price
ITM-1116109Z	3"	131.99
ITM-1116110Z	4"	167.52
ITM-1116112Z	6"	293.75

ABS Plain/Threaded Socket



HX QC: 4717



▶▶▶ 5 More Variants available online, or Call Us

Part Number	Tube NB	Thread	Price
ITM-1101204	1"	1"	5.09
ITM-1101207	2"	2"	12.34
ITM-1101208	2.1/2"	2.1/2"	32.05
ITM-1101210	4"	4"	40.49

ABS Plain/Threaded 90 deg Elbow



HX QC: 4718



▶▶▶ 4 More Variants available online, or Call Us

Part Number	Tube NB	Thread	Price
ITM-1103206	1.1/2"	1.1/2"	14.62
ITM-1103207	2"	2"	20.71

ABS Plain Female/Plain Male - Male Threaded Adaptor



HX QC: 4719



▶▶▶ 5 More Variants available online, or Call Us

Part Number	Tube NB	Spigot	BSP Male	Price
ITM-1120203	3/4"	1"	3/4"	2.82
ITM-1120206	1.1/2"	2"	1.1/2"	7.01
ITM-1120207	2"	2.1/2"	2"	10.04

ABS Plain Equal Male/Female Threaded Adaptor



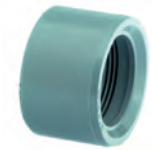
HX QC: 4720



▶▶▶ 5 More Variants available online, or Call Us

Part Number	Tube NB	Thread	Price
ITM-1121204	1"	1"	4.84
ITM-1121210	4"	4"	57.86

ABS Plain/Female Threaded Reducing Bush



HX QC: 4723



▶▶▶ 1 More Variant available online, or Call Us

Part Number	Tube NB	Female BSPP	Price
ITM-110920201	1/2"	3/8"	2.67
ITM-110920302	3/4"	1/2"	3.11

ABS Tank Connector



HX QC: 4724



▶▶▶ 4 More Variants available online, or Call Us

Part Number	Tube NB	Price
ITM-1124203	3/4"	9.44
ITM-1124204	1"	20.47
ITM-1124206	1.1/2"	57.11
ITM-1124207	2"	68.25
ITM-1124208	2.1/2"	89.56



For the New range of Airnet Fittings and Pipe see Page 14

ABS Plain/Threaded Nipple

HX QC: 4725



2 More Variants available online, or Call Us

Part Number	Tube NB	Thread BSPP	Price
ITM-1125202	1/2"	1/2"	2.67
ITM-1125204	1"	1"	4.35
ITM-1125205	1.1/4"	1.1/4"	5.94
ITM-1125207	2"	2"	8.37

ABS Male Brass Composite Union

HX QC: 4726

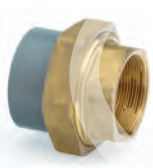


2 More Variants available online, or Call Us

Part Number	Tube NB	BSPP Male	Price
ITM-1176204	1"	1"	69.15
ITM-1176205	1.1/4"	1.1/4"	96.57
ITM-1176206	1.1/2"	1.1/2"	136.36
ITM-1176207	2"	2"	210.37

ABS Female Brass Composite Union

HX QC: 4727



Full Range Shown Here

Part Number	Tube NB	Price
ITM-1175202	1/2"	37.66
ITM-1175203	3/4"	57.30
ITM-1175204	1"	65.92
ITM-1175205	1.1/4"	89.01
ITM-1175206	1.1/2"	122.89
ITM-1175207	2"	186.38

ABS Standard Plain Double Union Ball Valve (EPDM Seals)

HX QC: 4729



2 More Variants available online, or Call Us

Part Number	Tube NB	Price
ITM-11665102Q	1/2"	24.63
ITM-11665104Q	1"	46.60
ITM-11665105Q	1.1/4"	55.84
ITM-11665106Q	1.1/2"	69.13
ITM-11665107Q	2"	105.32
ITM-11665109Q	3"	359.04
ITM-11665110Q	4"	537.72

ABS Industrial Plain Double Union Ball Valve (EPDM Seals)

HX QC: 4730



Full Range Shown Here

Part Number	Tube NB	Price
ITM-11661102Q	1/2"	60.44
ITM-11661103Q	3/4"	71.84
ITM-11661104Q	1"	85.74
ITM-11661105Q	1.1/4"	109.91
ITM-11661106Q	1.1/2"	141.63
ITM-11661107Q	2"	180.19
ITM-11661108Q	2.1/2"	358.05
ITM-11661109Q	3"	459.53
ITM-11661110Q	4"	638.54



See our website for all the sizes we stock

ABS Plain Double Union Spring Check Valve (EPDM Seals)

HX QC: 4731



Full Range Shown Here

Part Number	Tube NB	Price
ITM-1167102Q	1/2"	61.57
ITM-1167103Q	3/4"	72.60
ITM-1167104Q	1"	76.71
ITM-1167105Q	1.1/4"	108.97
ITM-1167106Q	1.1/2"	123.31
ITM-1167107Q	2"	170.10

Industrial Pipe Clip - Black PP

HX QC: 4732



Full Range Shown Here

Part Number	Tube NB	Type	Price
ITM-9614102	1/2"	B	2.56
ITM-9614103	3/4"	B	2.72
ITM-9614104	1"	B	2.99
ITM-9614105	1.1/4"	C	4.02
ITM-9614106	1.1/2"	C	4.35
ITM-9614107	2"	C	5.50
ITM-9614108	2.1/2"	C	10.50
ITM-9614109	3"	C	12.80
ITM-9614110	4"	C	17.77
ITM-9614111	5"	D	31.34
ITM-9614112	6"	D	39.98

ITM UPVC/ABS Trade Counter Display Figure

T9 QC: 7165



Full Range Shown Here

Part Number	Description	Price
ITM-MAN-DISPLAY	Display Figure & T Stand	85.20

Product **UPVC Imperial**

UPVC Class C Pipe Plain End 3 Mtr Length Stocked

HX QC: 4734



Full Range Shown Here

Part Number	Size	Pipe O/D (mm)	Pipe I/D (mm)	Price
ITM-21P07CPE-3	2"	60.3	55.3	28.61
ITM-21P08CPE-3	2 1/2"	75.2	68.8	44.25
ITM-21P09CPE-3	3"	88.9	81.9	58.93
ITM-21P10CPE-3	4"	114.3	105.3	88.93
ITM-21P11CPE-3	5"	140.2	128.2	133.66
ITM-21P12CPE-3	6"	168.3	155.1	191.17

UPVC Class C Pipe Plain End 6 Mtr Length

HX QC: 4733



4 More Variants available online, or Call Us

Part Number	Size	Pipe O/D (mm)	Pipe I/D (mm)	Price
ITM-21P09CPE	3"	88.9	81.9	107.20
ITM-21P12CPE	6"	168.3	155.1	370.62

UPVC Class E Pipe Plain End 3 Mtr Length Stocked

HX QC: 4736



Full Range Shown Here

Part Number	Size	Pipe O/D (mm)	Pipe I/D (mm)	Price
ITM-21P02EPE-3	1/2"	21.4	18.0	7.02
ITM-21P03EPE-3	3/4"	26.7	22.9	9.91
ITM-21P04EPE-3	1"	33.6	29.2	12.99
ITM-21P05EPE-3	1 1/4"	42.2	36.8	20.82
ITM-21P06EPE-3	1 1/2"	48.3	42.1	27.21
ITM-21P07EPE-3	2"	60.3	52.5	40.26

UPVC Class E Pipe Plain End 6 Mtr Length

HX QC: 4735



2 More Variants available online, or Call Us

Part Number	Size	Pipe O/D (mm)	Pipe I/D (mm)	Price
ITM-21P02EPE	1/2"	21.4	18.0	14.00
ITM-21P04EPE	1"	33.6	29.2	25.07
ITM-21P06EPE	1.1/2"	48.3	42.1	49.51
ITM-21P07EPE	2"	60.3	52.5	77.24

UPVC Class 7 Pipe Plain End 3 Mtr Length Stocked

HX QC: 4738

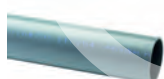


Full Range Shown Here

Part Number	Size	Pipe O/D (mm)	Pipe I/D (mm)	Price
ITM-21P027PE-3	1/2"	21.4	13.4	18.12
ITM-21P037PE-3	3/4"	26.7	18.3	24.42
ITM-21P047PE-3	1"	33.6	24.0	34.75
ITM-21P057PE-3	1 1/4"	42.2	31.8	45.69
ITM-21P067PE-3	1 1/2"	48.3	37.3	59.33
ITM-21P077PE-3	2"	60.3	48.3	75.62

UPVC Class 7 Pipe Plain End 6 Mtr Length

HX QC: 4737

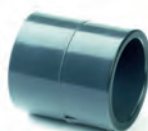


5 More Variants available online, or Call Us

Part Number	Size	Pipe O/D (mm)	Pipe I/D (mm)	Price
ITM-21P047PE	1"	33.6	24.0	66.97

UPVC Plain Socket

HX QC: 4739



2 More Variants available online, or Call Us

Part Number	Tube NB	Length (mm)	Price
ITM-2101103	3/4"	41	1.33
ITM-2101104	1"	47	1.52
ITM-2101105	1.1/4"	55	2.71
ITM-2101106	1.1/2"	65	3.20
ITM-2101107	2"	79	4.52
ITM-2201107SP	2.1/2"	92	9.57
ITM-2101109	3"	107	17.28
ITM-2101110	4"	128	25.11
ITM-2101112	6"	183	62.99

UPVC Plain 90 deg Elbow

HX QC: 4740



Full Range Shown Here

Part Number	Tube NB	Price
ITM-2103102	1/2"	1.60
ITM-2103103	3/4"	1.87
ITM-2103104	1"	2.57
ITM-2103105	1.1/4"	4.52
ITM-2103106	1.1/2"	5.83
ITM-2103107	2"	8.67
ITM-2203107SP	2.1/2"	16.89
ITM-2103109	3"	24.97
ITM-2103110	4"	37.62
ITM-22031140P	5"	89.07
ITM-2103112	6"	148.46

UPVC Plain 90 deg Short Radius Bend

HX QC: 4741

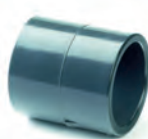


2 More Variants available online, or Call Us

Part Number	Tube NB	Price
ITM-2105102	1/2"	5.83
ITM-2105104	1"	9.50
ITM-2105106	1.1/2"	16.86
ITM-2105107	2"	22.13

UPVC Plain Inch/Metric Adaptor Socket

HX QC: 4742



7 More Variants available online, or Call Us

Part Number	Tube NB	Price
ITM-2301107063	2" x 63	9.85

UPVC Plain 45 deg Elbow

HX QC: 4743



4 More Variants available online, or Call Us

Part Number	Tube NB	Price
ITM-2104104	1"	3.82
ITM-2104106	1.1/2"	6.87
ITM-2104107	2"	9.66
ITM-2204107SP	2.1/2"	15.20
ITM-2104109	3"	22.75
ITM-2104110	4"	46.75
ITM-2104112	6"	96.44

UPVC Plain Equal Tee

HX QC: 4744

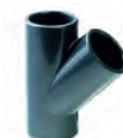


2 More Variants available online, or Call Us

Part Number	Tube NB	Price
ITM-2106102	1/2"	1.80
ITM-2106104	1"	3.40
ITM-2106105	1.1/4"	4.86
ITM-2106106	1.1/2"	7.01
ITM-2106107	2"	11.10
ITM-2206107SP	2.1/2"	19.08
ITM-2106109	3"	32.12
ITM-22061140P	5"	124.87
ITM-2106112	6"	163.72

UPVC Plain Y Piece/45 deg Tee

HX QC: 4745



2 More Variants available online, or Call Us

Part Number	Tube NB	Price
ITM-2107103	3/4"	8.88
ITM-2107104	1"	10.00
ITM-2107106	1.1/2"	15.37
ITM-2107107	2"	23.81
ITM-2207107SK	2.1/2"	53.08

UPVC Plain Equal Socket Union

HX QC: 4746



Full Range Shown Here

Part Number	Tube NB	Price
ITM-2102102	1/2"	6.04
ITM-2102103	3/4"	6.87
ITM-2102104	1"	8.88
ITM-2102105	1.1/4"	11.10
ITM-2102106	1.1/2"	15.20
ITM-2102107	2"	19.64
ITM-2202107SP	2.1/2"	50.36
ITM-2102109	3"	73.12
ITM-2102110	4"	98.99

UPVC Hose Adaptor Male Spigot x MM Hose Tail

HX QC: 4747

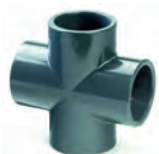


▶▶▶ 4 More Variants available online, or Call Us

Part Number	Tube NB	Hose I/D (mm)	Price
ITM-2326103025	3/4"	25	3.24
ITM-2326107060	2"	60	10.87

UPVC Plain Cross

HX QC: 4749

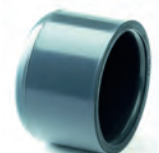


▶▶▶ 6 More Variants available online, or Call Us

Part Number	Tube NB	Price
ITM-22191075P	2.1/2"	48.15

UPVC Plain Cap

HX QC: 4750

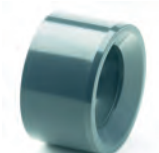


▶▶▶ 10 More Variants available online, or Call Us

Part Number	Tube NB	Price
ITM-2122110	4"	22.13

UPVC Plain Reducing Bush

HX QC: 4751



▶▶▶ 7 More Variants available online, or Call Us

Part Number	Tube NB	Price
ITM-210910403	1" x 3/4"	1.52
ITM-210910604	1.1/2" x 1"	2.43
ITM-210910704	2" x 1"	3.40
ITM-210910706	2" x 1.1/2"	3.40
ITM-210910907	3" x 2"	9.66
ITM-210911210	6" x 4"	41.14

UPVC Plain Stub Flange Serrated Face

HX QC: 4752



▶▶▶ 6 More Variants available online, or Call Us

Part Number	Tube NB	Price
ITM-22111075P	2.1/2"	11.46
ITM-2111109	3"	14.08
ITM-2111110	4"	18.52
ITM-22111140P	5"	41.83
ITM-2111112	6"	47.73

See our website for all the sizes we stock

UPVC Plain Full Face Flange BS10 Tables D&E

HX QC: 4754



▶▶▶ 3 More Variants available online, or Call Us

Part Number	Tube NB	Price
ITM-2114104W	1"	7.36
ITM-2114106W	1.1/2"	10.62
ITM-2114107W	2"	13.45
ITM-2114109W	3"	24.28

EPDM Full Face Gasket BS10 Table D/E

HX QC: 4755



▶▶▶ 4 More Variants available online, or Call Us

Part Number	Size	Price
ITM-98317104W	1"	4.59
ITM-98317105W	1.1/4"	5.34
ITM-98317106W	1.1/2"	7.32
ITM-98317107W	2"	8.04
ITM-98317108W	2.1/2"	10.85
ITM-98317109W	3"	11.14

UPVC Plain Blank Flange BS4504 NP10/16

HX QC: 4756



▶▶▶ 7 More Variants available online, or Call Us

Part Number	Tube NB	Price
ITM-2116109Z	3"	130.29
ITM-2116110Z	4"	165.82
ITM-2116112Z	6"	291.05

See our new range of Fluent Submersible Pumps see section 27

EPDM Full Face Gasket NP10/16

HX QC: 4757



▶▶▶ 6 More Variants available online, or Call Us

Part Number	Size	Price
ITM-98317107Z	2"	8.04
ITM-98317108Z	2.1/2"	10.85
ITM-98317109Z	3"	11.14
ITM-98317110Z	4"	16.22

Backing Ring Galvanised Mild Steel BS4504 NP10/16

HX QC: 4758



▶▶▶ Full Range Shown Here

Part Number	Tube NB	Price
ITM-99133107Z	2"	31.28
ITM-99133108Z	2.1/2"	42.97
ITM-99133109Z	3"	47.55
ITM-99133110Z	4"	61.59
ITM-99133111Z	5"	97.12
ITM-99133112Z	160mm - 6"	101.49

UPVC Plain/Threaded Equal Socket

HX QC: 4759



▶▶▶ 2 More Variants available online, or Call Us

Part Number	Tube NB	Thread	Price
ITM-2101202	1/2"	1/2"	3.57
ITM-2101203	3/4"	3/4"	3.97
ITM-2101205	1.1/4"	1.1/4"	7.69
ITM-2101206	1.1/2"	1.1/2"	8.90

UPVC Plain/Threaded St/Steel Reinforced Equal Socket



HX QC: 4760



▶▶▶ 2 More Variants available online, or Call Us

Part Number	Tube NB	Thread	Price
ITM-2134202	1/2"	1/2"	5.44
ITM-2134203	3/4"	3/4"	5.94
ITM-2134204	1"	1"	6.91
ITM-2134207	2"	2"	14.49

UPVC Plain Female/Plain Male - Male Threaded Adaptor



HX QC: 4761



▶▶▶ 10 More Variants available online, or Call Us

Part Number	Tube NB	Spigot	BSPP Male	Price
ITM-2120204	1"	1.1/4"	1"	3.89
ITM-2120207	2"	2.1/2"	2"	9.30
ITM-2120208	2.1/2"	3"	2.1/2"	23.13
ITM-2120209	3"	4"	3"	27.48

UPVC Plain Male - Female Threaded Equal Adaptor



HX QC: 4762



▶▶▶ 2 More Variants available online, or Call Us

Part Number	Tube NB	Thread	Price
ITM-2121202	1/2"	1/2"	3.24
ITM-2121204	1"	1"	4.36
ITM-2121206	1.1/2"	1.1/2"	6.92
ITM-2121207	2"	2"	11.16

UPVC Hose Adaptor Male BSP x MM Hose Tail



HX QC: 4763



▶▶▶ 3 More Variants available online, or Call Us

Part Number	BSPP Male	Hose ID (mm)	Price
ITM-23262M03025	3/4"	25	4.64
ITM-23262M04032	1"	32	5.55
ITM-23262M05040	1.1/4"	40	8.08

UPVC Hose Adaptor Male BSP x Inch Hose Tail



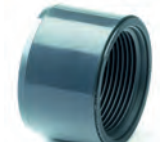
HX QC: 4764



▶▶▶ Full Range Shown Here

Part Number	BSPP Male	Hose ID (mm)	Price
ITM-21262M0202	1/2"	1/2"	19.29
ITM-21262M0303	3/4"	3/4"	19.75
ITM-21262M0404	1"	1"	23.82

UPVC Plain/Threaded Female Reducing Bush



HX QC: 4766



▶▶▶ 2 More Variants available online, or Call Us

Part Number	Tube NB	Female BSPP	Price
ITM-210920302	3/4"	1/2"	2.88

UPVC Tank Connector



HX QC: 4767



▶▶▶ 3 More Variants available online, or Call Us

Part Number	Tube NB	Price
ITM-2124202	1/2"	8.15
ITM-2124203	3/4"	9.32
ITM-2124204	1"	19.63
ITM-2124205	1.1/4"	49.50
ITM-2124206	1.1/2"	54.32
ITM-2124207	2"	65.00

UPVC Plain/Threaded Nipple



HX QC: 4768



▶▶▶ 2 More Variants available online, or Call Us

Part Number	Tube NB	BSPP Male	Price
ITM-2125202	1/2"	1/2"	2.67
ITM-2125203	3/4"	3/4"	3.20
ITM-2125204	1"	1"	4.20
ITM-2125205	1.1/4"	1.1/4"	5.72
ITM-2125206	1.1/2"	1.1/2"	6.03
ITM-2125207	2"	2"	8.01
ITM-2125209	3"	3"	20.95
ITM-2125210	4"	4"	34.09

UPVC Male Brass Composite Union



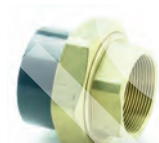
HX QC: 4769



▶▶▶ 1 More Variant available online, or Call Us

Part Number	Tube NB	Male BSPP	Price
ITM-2176203	3/4"	3/4"	61.30
ITM-2176204	1"	1"	69.15
ITM-2176205	1.1/4"	1.1/4"	96.57
ITM-2176206	1.1/2"	1.1/2"	136.36
ITM-2176207	2"	2"	210.37

UPVC Female Brass Composite Union



HX QC: 4770



▶▶▶ 1 More Variant available online, or Call Us

Part Number	Tube NB	Female BSPP	Price
ITM-2175203	3/4"	3/4"	57.30
ITM-2175204	1"	1"	65.92
ITM-2175205	1.1/4"	1.1/4"	89.01
ITM-2175206	1.1/2"	1.1/2"	122.89
ITM-2175207	2"	2"	186.38

UPVC Threaded Socket



HX QC: 4771



▶▶▶ 3 More Variants available online, or Call Us

Part Number	Female BSPP	Price
ITM-2101304	1"	6.55
ITM-2101306	1.1/2"	10.36
ITM-2101307	2"	12.71

UPVC Threaded 90 deg Elbow



HX QC: 4772



▶▶▶ 6 More Variants available online, or Call Us

Part Number	Female BSPP	Price
ITM-2103301	3/8"	4.49
ITM-2103307	2"	18.50
ITM-2103309	3"	48.27

UPVC Threaded Equal Tee



HX QC: 4773



▶▶▶ 6 More Variants available online, or Call Us

Part Number	Female BSPP	Price
ITM-2106302	1/2"	3.97
ITM-2106305	1.1/4"	12.26

UPVC Threaded Socket Union



HX QC: 4774



▶▶▶ 2 More Variants available online, or Call Us

Part Number	Female BSPP	Price
ITM-2102302	1/2"	10.66
ITM-2102303	3/4"	11.58
ITM-2102306	1.1/2"	28.56
ITM-2102307	2"	40.20
ITM-2102308	2.1/2"	63.66

UPVC Threaded Reducing Socket



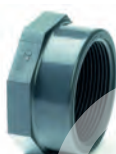
HX QC: 4775



▶▶▶ 5 More Variants available online, or Call Us

Part Number	Female BSPP	Price
ITM-213130504	1.1/4" x 1"	7.16

UPVC Threaded Cap



HX QC: 4776



▶▶▶ 5 More Variants available online, or Call Us

Part Number	Female BSPP	Price
ITM-2122306	1.1/2"	8.08

UPVC Threaded Plug



HX QC: 4777



▶▶▶ 5 More Variants available online, or Call Us

Part Number	Male BSPP	Price
ITM-2123307	2"	7.39

UPVC Male/Female Threaded Reducing Bush - Long Pattern



HX QC: 4778



▶▶▶ 15 More Variants available online, or Call Us

Part Number	BSPP Male	BSPP Female	Price
ITM-213030704	2"	1"	10.60

UPVC Male/Female Threaded Reducing Bush - Short Pattern



HX QC: 4779



▶▶▶ 1 More Variant available online, or Call Us

Part Number	BSPP Male	BSPP Female	Price
ITM-210930302	3/4"	1/2"	3.15
ITM-210930403	1"	3/4"	4.28
ITM-210930504	1.1/4"	1"	9.45
ITM-210930706	2"	1.1/2"	13.31

UPVC Threaded Equal Hex Nipple



HX QC: 4781



▶▶▶ 6 More Variants available online, or Call Us

Part Number	BSPP Male	Price
ITM-2127307	2"	7.61

UPVC Threaded Reducing Nipple



HX QC: 4782



▶▶▶ 5 More Variants available online, or Call Us

Part Number	BSPP Male	Price
ITM-212830605	1.1/2" x 1.1/4"	6.70
ITM-212830807	2.1/2" x 2"	16.98

UPVC Standard Plain Single Union Ball Valve (EPDM Seals)



HX QC: 4784



▶▶▶ 3 More Variants available online, or Call Us

Part Number	Tube NB	Price
ITM-21825104Q	1"	18.84
ITM-21825106Q	1.1/2"	40.12
ITM-21825107Q	2"	58.63

UPVC Standard Plain Double Union Ball Valve (EPDM Seals)



HX QC: 4785



▶▶▶ Full Range Shown Here

Part Number	Tube NB	Price
ITM-21665102Q	1/2"	18.49
ITM-21665103Q	3/4"	23.25
ITM-21665104Q	1"	35.84
ITM-21665105Q	1.1/4"	42.95
ITM-21665106Q	1.1/2"	53.20
ITM-21665107Q	2"	81.01
ITM-21665109Q	3"	259.91
ITM-21665110Q	4"	488.88

UPVC Industrial Plain Double Union Ball Valve (EPDM Seals)



HX QC: 4786



▶▶▶ Full Range Shown Here

Part Number	Tube NB	Price
ITM-21661102Q	1/2"	59.90
ITM-21661103Q	3/4"	71.17
ITM-21661104Q	1"	85.50
ITM-21661105Q	1.1/4"	108.44
ITM-21661106Q	1.1/2"	142.15
ITM-21661107Q	2"	179.09
ITM-226611075Q	2.1/2"	375.68
ITM-21661109Q	3"	429.80
ITM-21661110Q	4"	597.03

UPVC Plain Double Union Spring Check Valve (EPDM Seals)



HX QC: 4787



▶▶▶ 2 More Variants available online, or Call Us

Part Number	Tube NB	Price
ITM-2167102Q	1/2"	52.01
ITM-2167104Q	1"	62.25
ITM-2167106Q	1.1/2"	91.54
ITM-2167107Q	2"	131.42

UPVC Standard Lever Operated Butterfly Valve (EPDM Liner)



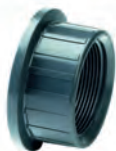
HX QC: 4788



▶▶▶ Full Range Shown Here

Part Number	Tube NB	Price
ITM-2373EL075Q-V	2.1/2"	295.72
ITM-2373EL090Q-V	3"	326.03
ITM-2373EL110Q-V	4"	332.19
ITM-2373EL140Q-V	5"	339.76
ITM-2373EL160Q-V	6"	421.95

UPVC Threaded Valve End



HX QC: 4789



▶▶▶ 3 More Variants available online, or Call Us

Part Number	BSPP Female	Price
ITM-VEITPVC003	3/4"	7.53
ITM-VEITPVC006	1.1/2"	15.89
ITM-VEITPVC007	2"	22.60

**Can't find what you need?
Call us - we can supply
millions of parts from
1000s of suppliers**

Industrial Pipe Clip - Black PP



HX QC: 4732



▶▶▶ Full Range Shown Here

Part Number	Tube NB	Type	Price
ITM-9614102	1/2"	B	2.56
ITM-9614103	3/4"	B	2.72
ITM-9614104	1"	B	2.99
ITM-9614105	1.1/4"	C	4.02
ITM-9614106	1.1/2"	C	4.35
ITM-9614107	2"	C	5.50
ITM-9614108	2.1/2"	C	10.50
ITM-9614109	3"	C	12.80
ITM-9614110	4"	C	17.77
ITM-9614111	5"	D	31.34
ITM-9614112	6"	D	39.98

Industrial Spacing Block - Black PP



HX QC: 4791



▶▶▶ 8 More Variants available online, or Call Us

Part Number	Tube NB	Price
ITM-9614207	2" - 63mm	4.15

ITM UPVC/ABS Trade Counter Display Figure



T9 QC: 7165



▶▶▶ Full Range Shown Here

Part Number	Description	Price
ITM-MAN-DISPLAY	Display Figure & T Stand	85.20

Product ▶ UPVC Metric

UPVC Metric Pipe Plain End 3 Mtr Length Stocked



HX QC: 4793



▶▶▶ 3 More Variants available online, or Call Us

Part Number	Pipe O/D (mm)	Pipe I/D (mm)	PN	Price
ITM-22P02516PE-3	25	21.2	16	9.51
ITM-22P03216PE-3	32	27.2	16	15.01
ITM-22P04016PE-3	40	34	16	23.28
ITM-22P05016PE-3	50	42.6	16	35.90
ITM-22P06310PE-3	63	57	10	31.24
ITM-22P06316PE-3	63	53.6	16	47.13
ITM-22P07516PE-3	75	63.8	16	66.80
ITM-22P11010PE-3	110	101.6	10	94.08
ITM-22P11016PE-3	110	96.8	16	142.10
ITM-22P16010PE-3	160	147.6	10	199.46

UPVC Metric Pipe Plain End 6 Mtr Length



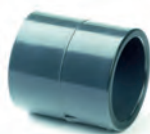
HX QC: 4792



▶▶▶ 7 More Variants available online, or Call Us

Part Number	Pipe O/D (mm)	Pipe I/D (mm)	PN	Price
ITM-22P03216PE	32	27.2	16	28.06
ITM-22P04016PE	40	34	16	43.61
ITM-22P05016PE	50	42.6	16	66.99
ITM-22P09016PE	90	76.6	16	179.88
ITM-22P11010PE	110	101.6	10	177.96
ITM-22P16010PE	160	147.6	10	373.60

UPVC Plain Socket



HX QC: 4794



▶▶▶ 1 More Variant available online, or Call Us

Part Number	Tube O.D (mm)	Length (mm)	Price
ITM-22011025P	25	41	1.34
ITM-22011032P	32	47	1.51
ITM-22011040P	40	55	2.29
ITM-22011050P	50	65	2.92
ITM-22011063P	63	79	4.20
ITM-22011090P	90	107	16.51
ITM-22011110P	110	128	23.62
ITM-22011160P	160	180	60.09

UPVC Plain 90 deg Elbow



HX QC: 4795



▶▶▶ 1 More Variant available online, or Call Us

Part Number	Tube O.D (mm)	Price
ITM-22031025P	25	1.89
ITM-22031032P	32	2.29
ITM-22031040P	40	4.11
ITM-22031050P	50	5.22
ITM-22031063P	63	8.06
ITM-22031090P	90	23.53
ITM-22031110P	110	35.78
ITM-22031160P	160	138.75

UPVC Plain 90 deg Short Radius Bend



HX QC: 4796



▶▶▶ 2 More Variants available online, or Call Us

Part Number	Tube O.D (mm)	Price
ITM-22051063P	63	23.76
ITM-22051075P	75	53.76
ITM-22051090P	90	58.83

UPVC Plain 45 deg Elbow



HX QC: 4797



▶▶▶ 6 More Variants available online, or Call Us

Part Number	Tube O.D (mm)	Price
ITM-22041032P	32	3.31
ITM-22041040P	40	4.81
ITM-22041160P	160	104.71

UPVC Plain Equal Tee



HX QC: 4798



▶▶▶ 4 More Variants available online, or Call Us

Part Number	Tube O.D (mm)	Price
ITM-22061050P	50	6.88
ITM-22061063P	63	10.28
ITM-22061090P	90	29.77
ITM-22061110P	110	45.24
ITM-22061160P	160	155.09

UPVC Plain Reducing Tee (Reduced Branch)



HX QC: 4799



▶▶▶ 5 More Variants available online, or Call Us

Part Number	Tube O.D (mm)	Price
ITM-22081050032P	50 x 32	6.88
ITM-22081110063P	110 x 63	45.24

UPVC Plain Stub Flange Serrated Face



HX QC: 4803



▶▶▶ 2 More Variants available online, or Call Us

Part Number	Tube O.D (mm)	Price
ITM-22111110P	110	20.45
ITM-22111160P	160	48.33

UPVC Plain Female/Plain Male - Male Threaded Adaptor



HX QC: 4808



▶▶▶ 4 More Variants available online, or Call Us

Part Number	Tube O.D (mm)	Spigot	BSPP Male	Price
ITM-2320203204K	32	40	1"	2.82
ITM-2320204005K	40	50	1.1/4"	5.63
ITM-2320205006K	50	63	1.1/2"	8.21
ITM-2320206307K	63	75	2"	13.18



UPVC Plain Equal Socket Union



HX QC: 4800



▶▶▶ 1 More Variant available online, or Call Us

Part Number	Tube O.D (mm)	Price
ITM-22021025P	25	6.16
ITM-22021032P	32	8.30
ITM-22021040P	40	10.28
ITM-22021050P	50	14.45
ITM-22021063P	63	19.19
ITM-22021090P	90	77.93
ITM-22021110P	110	94.68

Backing Ring PVC-U BS4504 NP10/16



HX QC: 4804



▶▶▶ Full Range Shown Here

Part Number	Size (mm)	Price
ITM-22331063Z	63	17.77
ITM-22331075Z	75	20.84
ITM-22331090Z	90	23.80
ITM-22331110Z	110	29.72
ITM-22331160Z	160	53.30

UPVC Plain Male - Female Threaded Equal Adaptor



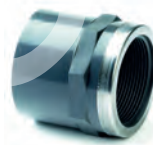
HX QC: 4809



▶▶▶ 7 More Variants available online, or Call Us

Part Number	Tube O.D (mm)	BSPP Female	Price
ITM-2321206307	63	2"	10.89

UPVC Plain/Threaded St/Steel Reinforced Equal Socket



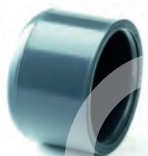
HX QC: 4810



▶▶▶ 2 More Variants available online, or Call Us

Part Number	Tube O.D (mm)	BSPP Female	Price
ITM-2334204005P	40	1.1/4"	7.86
ITM-2334205006P	50	1.1/2"	9.21
ITM-2334206307P	63	2"	12.90

UPVC Plain Cap



HX QC: 4801



▶▶▶ 8 More Variants available online, or Call Us

Part Number	Tube O.D (mm)	Price
ITM-22221160P	160	55.05

UPVC Tank Connector



HX QC: 4806



▶▶▶ 4 More Variants available online, or Call Us

Part Number	Tube O.D (mm)	BSPP Thread	Price
ITM-2224205040	40	1.1/4"	49.49
ITM-2224207063	63	2"	64.99

UPVC Plain Reducing Piece Female/Male/Female



HX QC: 4812



▶▶▶ 7 More Variants available online, or Call Us

Part Number	Dimension	Price
ITM-22561032025P	32x40x25	1.82

UPVC Plain Reducing Bush



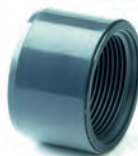
HX QC: 4802



▶▶▶ 10 More Variants available online, or Call Us

Part Number	Tube O.D (mm)	Price
ITM-22091032025P	32 x 25	1.42

UPVC Plain/Threaded Female Reducing Bush



HX QC: 4807



▶▶▶ 8 More Variants available online, or Call Us

Part Number	Tube O.D (mm)	Female BSPP	Price
ITM-2309211009P	110	3"	43.76

UPVC Standard Plain Single Union Ball Valve (EPDM Seals)



HX QC: 4813



▶▶▶ 4 More Variants available online, or Call Us

Part Number	Tube O.D (mm)	Price
ITM-228251032Q	32	18.84
ITM-228251063Q	63	58.63

UPVC Standard Plain Double Union Ball Valve (EPDM Seals)



HX QC: 4814



Full Range Shown Here

Part Number	Tube O.D (mm)	Price
ITM-2266S1020Q	20mm	18.49
ITM-2266S1025Q	25mm	23.25
ITM-2266S1032Q	32mm	35.84
ITM-2266S1040Q	40mm	42.95
ITM-2266S1050Q	50mm	53.20
ITM-2266S1063Q	63mm	81.01

UPVC Plain Double Union Spring Check Valve (EPDM Seals)



HX QC: 4815



1 More Variant available online, or Call Us

Part Number	Tube O.D (mm)	Price
ITM-22671020Q	20mm	52.01
ITM-22671025Q	25mm	57.85
ITM-22671032Q	32mm	62.25
ITM-22671040Q	40mm	75.17
ITM-22671050Q	50mm	91.54

Industrial Pipe Clip - Black PP



HX QC: 4817



1 More Variant available online, or Call Us

Part Number	Tube O.D (mm)	Type	Price
ITM-96241025	25	B	2.72
ITM-96241032	32	B	2.99
ITM-96241040	40	C	4.02
ITM-96241050	50	C	4.35
ITM-96241063	63	C	5.50
ITM-96241110	110	C	17.77
ITM-96241160	160	C	39.98

Product ▶ **ABS/UPVC Glues/Cleaners & Tools**

Griffon B25 ABS Cement with TT Closure 500ml



HX QC: 4818



Full Range Shown Here

Part Number	Size ml	Price
ITM-96E105081	500	20.85

Griffon HCR-36 Chemical Cleaner



HX QC: 4819



Full Range Shown Here

Part Number	Size ml	Price
ITM-96E120006	500	59.83

Griffon UNI100 UPVC Cement



HX QC: 4820



Full Range Shown Here

Part Number	Size ml	Price
ITM-96E101030	250	23.65
ITM-96E101080	500	37.00

Griffon WDF-05 Quick Set Cement



HX QC: 4821



Full Range Shown Here

Part Number	Size ml	Price
ITM-96450240	250	28.54
ITM-96450500	500	48.57

Griffon UNI100 GT Slow Setting UPVC Cement



HX QC: 4823



Full Range Shown Here

Part Number	Size	Price
ITM-96E101160	5 Litre	388.32

Griffon Aqua-Max Pool Sealant



HX QC: 4824



Full Range Shown Here

Part Number	Size grms	Price
ITM-96E6308214	425	49.36

Griffon Cleaning Fluid



HX QC: 4825



1 More Variant available online, or Call Us

Part Number	Size ml	Price
ITM-96E200021	500ml	17.53

Griffon Cable Saw



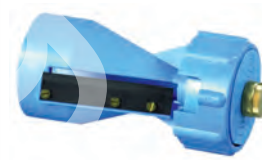
HX QC: 4826



Full Range Shown Here

Part Number	Description	Price
ITM-96E6307762	Cable Saw	46.92

Griffon Chamfering Tool 1/2" - 2"



HX QC: 4828

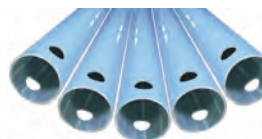


Full Range Shown Here

Part Number	Description	Price
ITM-96E6307771	Chamfering Tool 1/2" - 2"	505.60

Product ▶ **Transair Range**

Transair 3M Aluminium Pipe in Single Lengths - Stocked



HY QC: 2083

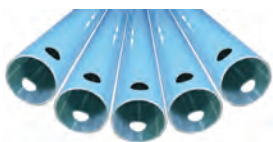


Full Range Shown Here

Part Number	Tube O/D (mm)	Tube I/D (mm)	Price
1003A.17.04.00	16.5	13	22.87
1003A.25.04.00	25	22	29.67
1003A.40.04.00	40	37	44.63
1003A.50.04	50	47	57.94
1003A.63.04	63	59	72.57

Transair 6M Aluminium Pipe in Pack
Quantities - Direct Delivery

HY QC: 2084



New

Full Range Shown Here

Part Number	Tube O/D (mm)	Tube I/D (mm)	Pack Size	Price
1006A.25.04.00	25	22	6	391.87
1006A.40.04.00	40	37	6	588.92
1006A.50.04	50	47	5	700.65
1006A.63.04	63	59	4	599.47

1 Port 45Tube Wall Bracket

HY QC: 2059



Full Range Shown Here

Part Number	Tube O/D (mm)	BSPP Female Thread	Price
6639.17.21	16.5	1/2"	27.89
6639.25.21	25	1/2"	32.99

2 Port Horizontal Tube Wall Bracket

NA QC: 7164



Full Range Shown Here

Part Number	Tube O/D (mm)	BSPP Female Thread	Price
6681.17.21	16.5	1/2"	24.46
6681.25.21	25	1/2"	28.27

2 Port 45Tube Wall Bracket

HY QC: 2060



Full Range Shown Here

Part Number	Tube O/D (mm)	BSPP Female Thread	Price
6682.17.21	16.5	1/2"	32.62
6682.25.21	25	1/2"	38.47

3 Port 45Tube Wall Bracket

HY QC: 2061



Full Range Shown Here

Part Number	Tube O/D (mm)	BSPP Female Thread	Price
6695.25.21	25	1/2"	46.79

1 Port 45 Threaded Wall bracket

HY QC: 2062



Full Range Shown Here

Part Number	BSPP Female Thread	Price
6641.21.21	1/2"	30.86

2 Port 45 Threaded Wall Bracket

HY QC: 2063



Full Range Shown Here

Part Number	BSPP Female Thread	Price
6690.21.21	1/2"	36.04



See our website for all the sizes we stock

1 Port 45 Wall Bracket c/w Ball valve

HY QC: 2064



Full Range Shown Here

Part Number	Tube O/D (mm)	BSPP Female Thread	Price
6678.17.21	16.5	1/2"	83.89
6678.25.21	25	1/2"	103.21

2 Port 45 Wall Bracket c/w Ball valve

HY QC: 2065



Full Range Shown Here

Part Number	Tube O/D (mm)	BSPP Female Thread	Price
6693.17.21	16.5	1/2"	88.37
6693.25.21	25	1/2"	113.32

3 Port 45 Wall Bracket c/w Ball valve

HY QC: 2066



Full Range Shown Here

Part Number	Tube O/D (mm)	BSPP Female Thread	Price
6637.25.21	25	1/2"	115.84

Mini Bracket

HY QC: 2067



Full Range Shown Here

Part Number	Tube O/D (mm)	BSPP Female Thread	Price
6661.25.21	25	1/2"	28.04
6661.40.21	40	1/2"	35.69
6661.40.27	40	3/4"	40.04
6661.50.21	50	1/2"	42.84
6661.50.27	50	3/4"	44.51
6662.63.21	63	1/2"	46.82
6662.63.27	63	3/4"	49.05

Reducing Bracket

HY QC: 2068



Full Range Shown Here

Part Number	Tube O/D A (mm)	Tube O/D B (mm)	Price
6662.25.17	25	16.5	26.68
6662.25.00	25	25	32.74
6662.40.17	40	16.5	32.92
6662.40.25	40	25	40.12
6662.50.25	50	25	46.64
6662.63.25	63	25	52.99

Quick Assembly Bracket c/w Ball Valve

HY QC: 2069



Full Range Shown Here

Part Number	Tube O/D (mm)	BSPP Female Thread	Price
6669.25.21	25	1/2"	45.20
6669.40.21	40	1/2"	56.09
6669.40.27	40	3/4"	65.43
6669.50.21	50	1/2"	65.49
6669.50.27	50	3/4"	72.92
6669.63.21	63	1/2"	71.68
6669.63.27	63	3/4"	79.85



We stock the EE range of Galvanised fittings and pipe see section 9

Quick Assembly Direct Feed Bracket - 50 mm



HY QC: 4829



Full Range Shown Here

Part Number	Tube O/D (A) (mm)	Tube O/D (B) (mm)	Price
RA69.50.25	50	25	40.79

Quick Assembly Direct Feed Bracket - 50 mm x BSPP



HY QC: 4830



Full Range Shown Here

Part Number	Tube O/D (mm)	BSPP Female Thread	Price
RA65.50.04	50	1/2"	38.44
RA65.50.08	50	1"	42.28

Pressurised System Outlet c/w Ball Valve - 50 mm



HY QC: 4831



Full Range Shown Here

Part Number	Tube O/D (mm)	BSPP Female Thread	Price
EA98.06.04	50	1/2"	118.72

Male Stud BSPT



HY QC: 2070



Full Range Shown Here

Part Number	Tube O/D (mm)	BSPT Male Thread	Price
6605.17.13	16.5	1/4"	18.53
6605.17.21	16.5	1/2"	22.39
6605.25.21	25	1/2"	28.63
6605.25.27	25	3/4"	29.84
6605.25.34	25	1"	30.53
6605.40.34	40	1"	47.14
6605.40.42	40	1.1/4"	53.70
6605.40.49	40	1.1/2"	55.77
6605.50.49	50	1.1/2"	81.01
6605.50.48	50	2"	93.59
6605.63.48	63	2"	77.51
6605.63.47	63	2.1/2"	76.24

Male Stud BSPT c/w Fixing Plate



HY QC: 4832



Full Range Shown Here

Part Number	Tube O/D (mm)	BSPT Male Thread	Price
6615.50.49	50	1.1/2"	123.71
6615.50.48	50	2"	133.99

Male Stud Nut BSPT



HY QC: 4833



Full Range Shown Here

Part Number	Tube O/D (mm)	BSPT Male Thread	Price
6611.50.49	50	1.1/2"	87.93
6611.50.48	50	2"	108.85

Pipe To Pipe Connector



HY QC: 2071



Full Range Shown Here

Part Number	Tube O/D (mm)	Price
6606.17.00	16.5	17.49
6606.25.00	25	21.86
6606.40.00	40	36.11
6606.50.00	50	41.98
6606.63.00	63	50.65

Connector with Vent



HY QC: 2072



Full Range Shown Here

Part Number	Tube O/D (mm)	Price
6676.25.00	25	25.00
6676.40.00	40	44.30
6676.50.00	50	59.94
6676.63.00	63	60.73

Plug-In Reducer 25mm & 40mm



HY QC: 2073



Full Range Shown Here

Part Number	Description	Price
6666.17.25	25mm pipe to 16.5mm pipe	25.84
6666.25.40	40mm pipe to 25mm pipe	33.44

Plug-In Reducer 50mm & 63mm



HY QC: 2073



Full Range Shown Here

Part Number	Description	Price
6666.40.50	50mm pipe to 40mm pipe	44.19
6666.40.63	63mm pipe to 40mm pipe	43.61
6666.50.63	63mm pipe to 50mm pipe	49.09

Vented End Cap



HY QC: 2074



Full Range Shown Here

Part Number	Tube O/D (mm)	Price
6625.17.00	16.5	21.43
6625.25.00	25	22.37
6625.40.00	40	30.12
6625.50.00	50	35.76
6625.63.00	63	41.59

Elbow 90 Male Stud

HY QC: 2075



Full Range Shown Here

Part Number	Tube O/D (mm)	BSPT Male Thread	Price
6609.17.13	16.5	1/4"	40.37
6609.17.21	16.5	1/2"	44.83
6609.25.21	25	1/2"	56.50
6609.25.27	25	3/4"	57.73
6609.25.34	25	1"	59.29
6609.40.34	40	1"	94.49
6609.40.42	40	1.1/4"	100.11
6609.40.49	40	1.1/2"	102.22
6609.40.48	40	2"	103.75
6609.50.49	50	1.1/2"	130.25
6609.50.48	50	2"	132.23
6609.63.48	63	2"	165.31
6609.63.47	63	2.1/2"	169.16

Elbow 45 Male Stud

HY QC: 2076



Full Range Shown Here

Part Number	Tube O/D (mm)	BSPT Male Thread	Price
6619.25.21	25	1/2"	58.03
6619.25.27	25	3/4"	59.27
6619.25.34	25	1"	60.78
6619.40.34	40	1"	97.01
6619.40.42	40	1.1/4"	102.63
6619.40.49	40	1.1/2"	104.72
6619.40.48	40	2"	106.30
6619.50.49	50	1.1/2"	138.82
6619.50.48	50	2"	128.69

90 Elbow

HY QC: 2077



Full Range Shown Here

Part Number	Tube O/D (mm)	Price
6602.17.00	16.5	20.00
6602.25.00	25	24.67
6602.40.00	40	40.94
6602.50.00	50	49.14
6602.63.00	63	57.85

45 Elbow

HY QC: 2078



Full Range Shown Here

Part Number	Tube O/D (mm)	Price
6612.25.00	25	29.67
6612.40.00	40	49.14
6612.50.00	50	52.11
6612.63.00	63	75.35

Equal Tee

HY QC: 2079



Full Range Shown Here

Part Number	Tube O/D (mm)	Price
6604.17.00	16.5	24.94
6604.25.00	25	32.84
6604.40.00	40	65.21
6604.50.00	50	80.30
6604.63.00	63	92.49

Reducing Tee

HY QC: 4834



Full Range Shown Here

Part Number	Tube O/D A (mm)	Tube O/D B (mm)	Price
6604.50.25	50	25	91.69
6604.50.40	50	40	83.74
6604.63.40	63	40	85.68

Double Female Ball Valve

HY QC: 2081



Full Range Shown Here

Part Number	Tube O/D (mm)	Price
4002.40.00	40	93.65
4002.63.00	63	145.10

Double Female Vented Ball Valve

HY QC: 4835



Full Range Shown Here

Part Number	Tube O/D (mm)	Price
4089.17.00	16.5	59.54
4089.25.00	25	76.73

Ball Valve Lockable & Vented

HY QC: 2082



Full Range Shown Here

Part Number	Tube O/D (mm)	Price
4099.17.00	16.5	75.22
4099.25.00	25	91.79

Lockable Aluminium Valve - 50 mm

HY QC: 4836



Full Range Shown Here

Part Number	Tube O/D (mm)	Price
4092.50.00	50	131.56

Flexible Hose

HY QC: 2085



Full Range Shown Here

Part Number	Tube O/D (mm)	Length (M)	Price
1001E.250001	25	0.57	75.76
1001E.250003	25	1.5	95.46
1001E.250004	25	2	107.49
1001E.400002	40	1.15	129.73
1001E.400004	40	2	155.12
1001E.400005	40	3	215.43

Clips/Clamps/Spacers & Tools

Fixing Clip For Rigid Pipe

HY QC: 2086



Full Range Shown Here

Part Number	Tube O/D (mm)	Price
6697.17.00	16.5	2.11
6697.25.00	25	2.43
6697.40.00	40	2.92
6697.50.00	50	3.59
6697.63.00	63	4.06

Transair Clips & Spacers



HY QC: 2087



Full Range Shown Here

Part Number	Description	Price
6697.00.03	Spacer Block for Fixing Clip	1.53
6697.00.02	Clip Adaptor for Rod M8x1 Male x M10x1.5 Female	2.08

Transair Beam Clamps



HY QC: 2088



Full Range Shown Here

Part Number	Description	Price
6699.03.01	Screw Type Beam Clamp 16.5mm 40mm	3.25
ER99.06.02	Screw Type Beam Clamp 63mm 100mm for M8 Screw	3.70
ER99.06.03	Screw Type Beam Clamp 63mm 100mm for M10 Screw	4.69

Transair Tube Cutter



HY QC: 2089



Full Range Shown Here

Part Number	Description	Price
6698.03.01	Tube Cutter for 16.5 to 63mm Pipe	101.10

Transair Tools



HY QC: 2090



1 More Variant available online, or Call Us

Part Number	Description	Price
6698.04.02	Deburring Tool for Rigid Aluminium Pipe 16.5mm 100mm	12.11
6698.04.01	Chamfer Tool for Rigid Aluminium Pipe 16.5mm 40mm	41.16
6698.05.03	Tightening Spanners for 63mm Nuts	64.99

Transair Drilling Jig



HY QC: 4837



Full Range Shown Here

Part Number	Description	Price
6698.01.03	Drilling Jig 25 to 63mm	356.35

Transair Drilling Tool



HY QC: 2092



Full Range Shown Here

Part Number	Description	Price
6698.02.02	Drilling Tool for 25mm Pipe	91.35
6698.02.01	Drilling Tool for 40 & 63mm Pipe	89.89

Tool Case



HY QC: 4838



New

Full Range Shown Here

Part Number	Description	Price
6698.00.05	Complete Kit 16.5 to 63mm	775.56

Airnet Aluminium Air Pipe

Blue Compressed Air Pipe 2.85m Lengths - Stocked



NB QC: 7718

Full Range Shown Here

Part Number	Size	Length	Price
2811-1063-10	20mm	2.85m	19.07
2811-2063-10	25mm	2.85m	25.22
2811-4063-05	40mm	2.85m	47.97
2811-5063-04	50mm	2.85m	50.75
2811-6063-03	63mm	2.85m	74.21
2811-7063-02	80mm	2.85m	389.55

Blue Compressed Air Pipe 5.70m Lengths - Direct Delivery



NB QC: 7719

New

Full Range Shown Here

Part Number	Size	Length	Pack Qty	Price
2811-1000-10	20mm	5.70m	10	300.98
2811-2000-10	25mm	5.70m	10	402.75
2811-4000-05	40mm	5.70m	5	325.65
2811-5000-04	50mm	5.70m	5	339.81
2811-6000-03	63mm	5.70m	3	344.07
2811-7000-02	80mm	5.70m	2	393.24
2811-8000-00	100mm	5.70m	1	180.09
2811-9000-06	158mm	5.70m	6	2730.77

Blue S Bends



NB QC: 7720



New

Full Range Shown Here

Part Number	Size	Price
2811-1067-05	20mm x 440mm	10.11
2811-2067-05	25mm x 460mm	40.10



Equal Straight Connector



NB QC: 7721



New

Full Range Shown Here

Part Number	Size	Price
2811-1002-80	20mm	12.24
2811-2002-80	25mm	17.75
2811-4002-80	40mm	24.68
2811-5002-80	50mm	34.54
2811-6002-80	63mm	56.51
2811-7002-80	80mm	71.73
2810-8002-00	100mm	79.71
2810-9002-00	158mm	144.03

Reducing Straight Connector



NB QC: 7722



New

Full Range Shown Here

Part Number	Size	Price
2811-2121-80	25mm to 20mm	18.29
2811-4221-80	40mm to 25mm	26.49
2811-5421-80	50mm to 40mm	36.32
2811-6521-81	63mm to 50mm	81.04
2811-7621-80	80mm to 63mm	94.06
2810-8721-00	100mm to 80mm	83.10
2810-9821-00	158mm to 100mm	111.47

Male Stud Connector



NB QC: 7723



Full Range Shown Here

Part Number	Size	Price
2811-1017-80	20mm x R1/2"	23.13
2811-1117-80	20mm x R3/4"	23.13
2811-2117-80	25mm x R3/4"	28.62
2811-2217-80	25mm x R1"	28.62
2811-4317-80	40mm x R1.1/4"	42.96
2811-4417-80	40mm x R1.1/2"	42.96
2811-5417-80	50mm x R1.1/2"	60.22
2811-5517-80	50mm x R2"	60.22
2811-6517-80	63mm x R2"	83.20
2811-6617-80	63mm x R2.1/2"	83.77
2811-7617-80	80mm x R2.1/2"	107.99
2811-7717-80	80mm x R3"	104.80

Wall Mounting Connector ISO228



NB QC: 7724



Full Range Shown Here

Part Number	Inlet	Outlet BSPP	Price
2811-1023-80	20mm	1/2" bspp x 3	27.34
2811-2023-80	25mm	1/2" bspp x 3	40.72

Wall Mounting Connector - Threaded



NB QC: 7725



Full Range Shown Here

Part Number	Inlet	Outlet BSPP	Price
2811-0025-80	1/2"	1/2" x 1	32.97
2811-1025-80	3/4"	1/2" x 1	32.97

End Cap



NB QC: 7726



Full Range Shown Here

Part Number	Size	Price
2811-1006-80	20mm	12.73
2811-2006-80	25mm	14.47
2811-4006-80	40mm	20.64
2811-5006-80	50mm	32.19
2811-6006-80	63mm	55.35
2811-7006-80	80mm	92.85
2810-9816-00	100mm/158mm	85.41

Equal 90 Degree Elbow



NB QC: 7727



Full Range Shown Here

Part Number	Size	Price
2811-1003-80	20mm	13.39
2811-2003-80	25mm	17.15
2811-4003-80	40mm	26.92
2811-5003-80	50mm	44.36
2811-6003-80	63mm	52.34
2811-7003-80	80mm	67.10
2810-8003-00	100mm	99.65
2810-9003-00	158mm	136.54

Equal 45 Degree Elbow



NB QC: 7728



Full Range Shown Here

Part Number	Size	Price
2811-1004-80	20mm	13.39
2811-2004-80	25mm	17.90
2811-4004-80	40mm	28.73
2811-5004-80	50mm	46.98
2811-6004-80	63mm	79.21
2811-7004-80	80mm	103.28
2810-8004-00	100mm	107.64
2810-9004-00	158mm	123.46

Equal Tee



NB QC: 7729



Full Range Shown Here

Part Number	Size	Price
2811-1005-80	20mm	17.67
2811-2005-80	25mm	24.12
2811-4005-80	40mm	40.39
2811-5005-80	50mm	53.92
2811-6005-80	63mm	67.96
2811-7005-80	80mm	92.92
2810-8005-00	100mm	111.98
2810-9005-00	158mm	161.14

Reducing Tee



NB QC: 7730



Full Range Shown Here

Part Number	Inlet/Outlet	Reduced Branch	Price
2811-2107-80	25mm	20mm	23.56
2811-4107-80	40mm	20mm	40.78
2811-4207-80	40mm	25mm	40.78
2811-5107-80	50mm	20mm	67.41
2811-5207-80	50mm	25mm	67.41
2811-5407-80	50mm	40mm	53.07
2811-6507-81	63mm	50mm	130.15
2811-7607-80	80mm	63mm	163.33
2810-8507-00	100mm	50mm	106.28
2810-8607-00	100mm	63mm	109.14
2810-8707-00	100mm	80mm	113.88
2810-9707-00	158mm	80mm	161.14
2810-9807-00	158mm	100mm	161.14

Reducing Tee - Threaded Branch



NB QC: 7731



Full Range Shown Here

Part Number	Inlet/Outlet	Reduced Branch	Price
2811-1008-80	20mm	G1/2"	23.13
2811-2008-80	25mm	G1/2"	28.73
2811-2108-80	25mm	G3/4"	55.07
2811-4208-80	40mm	G1"	45.15
2811-5208-80	50mm	G1"	60.91
2811-6508-80	63mm	G2"	102.45
2811-7608-80	80mm	G2.1/2"	151.57
2811-7708-80	80mm	3"	144.84
2810-8208-00	100mm	G1"	101.55
2810-9208-00	158mm	G1"	166.06

Product **Airnet Quickdrops & Ball Valves**

Quickdrop



NB QC: 7732



Full Range Shown Here

Part Number	Inlet	Outlet	Price
2811-2110-80	25mm	20mm	23.50
2811-4110-80	40mm	20mm	31.37
2811-4210-80	40mm	25mm	37.89
2811-5110-80	50mm	20mm	40.72
2811-5210-80	50mm	25mm	41.87
2811-6110-80	63mm	20mm	46.00
2811-6210-80	63mm	25mm	45.96
2811-7110-80	80mm	20mm	65.49
2811-7210-80	80mm	25mm	85.50

Product **Airnet Elbows & Tees**

Quickdrop - Threaded Outlet



NB QC: 7733



Full Range Shown Here

Part Number	Inlet	Outlet	Price
2811-2011-80	25mm	G1/2"	26.82
2811-4011-80	40mm	G1/2"	34.32
2811-4111-80	40mm	G3/4"	45.02
2811-5011-80	50mm	G1/2"	36.70
2811-5111-80	50mm	G3/4"	68.84
2811-6011-80	63mm	G1/2"	69.35
2811-6111-80	63mm	G3/4"	73.80
2811-7011-80	80mm	G1/2"	74.30
2811-7111-80	80mm	G3/4"	170.95

Ball Valve



NB QC: 7734



Full Range Shown Here

Part Number	Size	Price
2811-1051-81	20mm	50.78
2811-2051-81	25mm	61.75
2811-4051-81	40mm	134.65
2811-5051-81	50mm	317.59

Ball Valve Airnet to ISO228 Female



NB QC: 7735



Full Range Shown Here

Part Number	Size	Price
2811-1152-81	20mm x G3/4"	51.71
2811-2252-81	25mm x G1"	71.97
2811-4452-81	40mm x G1.1/2"	113.17
2811-5552-81	50mm x G2"	160.94

Product

Airnet Piping Accessories

Pipe Clips



NB QC: 7736



Full Range Shown Here

Part Number	Size	Connection	Price
2811-1022-20	20mm	M6	1.46
2811-2022-20	25mm	M6	1.09
2811-4022-20	40mm	M6	2.20
2811-5022-20	50mm	M6	2.14
2811-6022-20	63mm	M8	3.76
2811-7022-20	80mm	M8	3.76
2810-8122-10	100mm	M8/M10	5.56
2810-9022-10	158mm	M8/M10	103.57

Polymer Pipe Clip Spacer



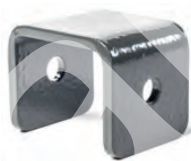
NB QC: 7737



Full Range Shown Here

Part Number	Height	Price
2811-0027-10	15mm	1.27
2811-0127-10	20mm	2.53
2811-0227-10	30mm	3.67

Steel Pipe Clip Spacer



NB QC: 7738



Full Range Shown Here

Part Number	Height	Price
2810-0227-10	25mm	11.68
2810-0327-10	50mm	7.79

Pipe Clip Adaptor Bolt



NB QC: 7739



Full Range Shown Here

Part Number	Size	Price
2811-0072-00	M6 - M8	2.24
2811-0372-00	M10 - 3/8" UNC	2.37
2811-0172-00	1/4" - 3/8" UNC	1.98
2811-0272-00	5/16" - 3/8" UNC	2.31

Flange Valve Support



NB QC: 7740



Full Range Shown Here

Part Number	Size	Price
2811-1264-10	20mm/25mm	8.96
2810-0006-38	63mm	34.08
2810-0007-38	80mm	34.08
2810-8064-00	100mm	12.18
2810-9064-00	158mm	25.76

Canalis KN Hanger



NB QC: 7741



Full Range Shown Here

Part Number	Price
2810-0250-05	10.13

Beam Clamp I Profile



NB QC: 7742



Full Range Shown Here

Part Number	Size	Range	Price
2810-0035-10	M8	2 - 3mm	2.44
2810-1035-10	M6	2 - 3mm	3.48
2810-0135-10	M8	3 - 8mm	2.55
2810-1135-10	M6	3 - 8mm	4.90
2810-0235-10	M8	8 - 14mm	2.67
2810-1235-10	M6	8 - 14mm	3.60
2810-0335-10	M8	14 - 20mm	2.80
2810-1335-10	M6	14 - 20mm	3.70

Screw Beam Clamp



NB QC: 7743



Full Range Shown Here

Part Number	Size	Range	Price
2810-0036-10	M8	1.5 - 11mm	3.90
2810-1036-10	M6	1.5 - 11mm	9.85

U Bolt Beam Clamp

NB QC: 7744



Full Range Shown Here

Part Number	Size	Price
2810-0037-10	M6	4.74

Hang Clamp H Profile

NB QC: 7745



Full Range Shown Here

Part Number	Size	Range	Price
2810-0038-10	M8	1.5 - 4mm	3.03
2811-1038-10	M6	1.5 - 4mm	9.34
2810-0138-10	M8	4 - 6.5mm	3.03
2811-1138-10	M6	4 - 6.5mm	5.39

Roof Clamp

NB QC: 7746



Full Range Shown Here

Part Number	Size	Range	Price
2810-0039-10	M8	0.8 - 3mm	1.82
2810-1039-10	M6	0.8 - 3mm	3.51

T Bolts M8

NB QC: 7747



Full Range Shown Here

Part Number	Length	Price
2810-0033-10	30mm	0.91
2810-0133-10	40mm	0.97
2810-0233-10	60mm	1.03
2810-0333-10	80mm	1.27

Sliding Nut

NB QC: 7748



Full Range Shown Here

Part Number	Size	Price
2810-1033-10	M6	3.34

Sealing Gel

NB QC: 7749



Full Range Shown Here

Part Number	Size	Price
2810-0148-00	1 Ltr	14.05

Product

Airnet Installation Tool Kits

PF Series Installation Spanner 20mm - 50mm

NB QC: 7750



Full Range Shown Here

Part Number	Size	Price
2811-1028-00	20mm	8.75
2811-2028-00	25mm	8.82
2811-4028-00	40mm	28.74
2811-5028-00	50mm	27.47

Black Series Installation Spanner 63mm - 80mm

NB QC: 7751



Full Range Shown Here

Part Number	Size	Price
2811-6028-00	63mm	38.11
2811-7028-00	80mm	38.75

Belt Spanner 40mm - 80mm

NB QC: 7752



Full Range Shown Here

Part Number	Description	Price
2810-8028-00	Covers 40 - 80mm	12.46

Pipe Deburrer

NB QC: 7753



Full Range Shown Here

Part Number	Size	Price
2810-0141-00	20 - 50mm	129.44

Hole Deburrer Pen

NB QC: 7754



Full Range Shown Here

Part Number	Type	Price
2810-0042-00	Light Duty	24.68
2810-0641-00	Heavy Duty	25.49

Drill Bit for Quickdrops

NB QC: 7755



Full Range Shown Here

Part Number	Size	Price
2810-0143-00	25mm	9.33
2810-0243-00	40 - 80mm	5.82

PF Series Tool Kit 20mm - 50mm

NB QC: 7756



Full Range Shown Here

Part Number	Description	Price
2811-0045-00	Install Kit to suit 20 - 50mm Airnet Range	448.05

Tool Kit for 63mm - 158mm

NB QC: 7757



Full Range Shown Here

Part Number	Description	Price
2811-0245-00	Install Kit to suit 63 - 153mm Airnet Range	291.46

Electrical Pipe Cutter

NB QC: 7758

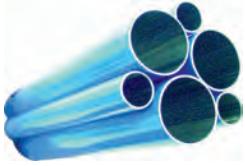


Full Range Shown Here

Part Number	Voltage	Price
2810-0540-80	220 - 230v	1007.68
2810-0640-80	110v	1007.68
2810-0740-00	Spare Blade	106.47

Product ▶ John Guest Ringmain

Aluminium Pipe



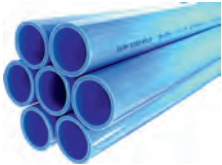
HZ QC: 2114



▶▶▶ Full Range Shown Here

Part Number	Tube O/D (mm)	Tube I/D (mm)	Price
JRALUTUBE12	12	10	30.00
AL-RM1513-3M	15	12.5	20.58
AL-RM1816-3M	18	14	27.31
AL-RM2220-3M	22	18	30.74
AL-RM2826-3M	28	23	49.57

Rigid Nylon Pipe



IA QC: 2115



▶▶▶ Full Range Shown Here

Part Number	Tube O/D (mm)	Tube I/D (mm)	Price
PA-RM1209-3M	12	9	7.51
PA-RM1512-3M	15	12.5	9.49
PA-RM1814-3M	18	14	15.43
PA-RM2218-3M	22	18	19.59
PA-RM2823-3M	28	23	30.64

Aluminium Wall Block



IA QC: 2094



▶▶▶ Full Range Shown Here

Part Number	BSPP Thread	Price
JGWALLBOX1/2	1/2"	34.67
JGWALLBOX3/4	3/4"	34.67

Nylon Porting Block



IA QC: 2095



▶▶▶ Full Range Shown Here

Part Number	Size	Price
JG-L-WSK	5x1/2" BSP	14.15

Straight Adaptor BSPP



IA QC: 2096



▶▶▶ Full Range Shown Here

Part Number	Tube O/D (mm)	BSPP Male Thread	Price
PM011213E	12	3/8"	2.46
PM011214E	12	1/2"	2.72
PM011514E	15	1/2"	3.16
PM011814E	18	1/2"	3.35
PM012216E	22	3/4"	3.55

Straight Adaptor Brass BSPT



IA QC: 2097



▶▶▶ Full Range Shown Here

Part Number	Tube O/D (mm)	BSPT Thread	Price
MM011504N	15	1/2"	6.93
MM012206N	22	3/4"	12.40
MM012808N	28	1"	24.31

Straight Connector Tube



IA QC: 2098



▶▶▶ Full Range Shown Here

Part Number	Tube O/D (mm)	Price
PM0412E	12	2.11
PM0415E	15	2.40
PM0418E	18	3.00
PM0422E	22	3.61
PM0428E	28	7.48

Equal Elbow Tube



IA QC: 2099



▶▶▶ Full Range Shown Here

Part Number	Tube O/D (mm)	Price
PM0312E	12	2.78
PM0315E	15	3.32
PM0318E	18	4.15
PM0322E	22	4.97
PM0328E	28	8.97

Stem Elbow



IA QC: 2100



▶▶▶ 1 More Variant available online, or Call Us

Part Number	Stem O/D (mm)	Tube O/D (mm)	Price
PM221212E	12	12	2.81
PM221515E	15	15	3.32
PM222222E	22	22	4.98

Wingback Elbow Brass BSPP



IA QC: 2101



▶▶▶ Full Range Shown Here

Part Number	Tube O/D (mm)	BSPP Female Thread	Price
PM15WB	15	1/2"	16.13
PM22WB	22	3/4"	18.95

Equal Tee



IA QC: 2102



▶▶▶ Full Range Shown Here

Part Number	Tube O/D (mm)	Price
PM0212E	12	2.94
PM0215E	15	3.48
PM0218E	18	4.38
PM0222E	22	5.27
PM0228E	28	11.42

Water Trap Tee



IA QC: 2103



▶▶▶ Full Range Shown Here

Part Number	Tube O/D (mm)	Price
PMT22E	22	9.71

Reducing Tee



IA QC: 2104



▶▶▶ Full Range Shown Here

Part Number	Tube O/D (mm) A	Tube O/D (mm) B	Price
PM3018AE	18	15	5.62
PM3022AE	22	15	5.62

Water Trap Tee Converter



IA QC: 2105



Full Range Shown Here

Part Number	Tube O/D (mm)	Price
WTC28	28	7.83

Plug



IA QC: 2106



1 More Variant available online, or Call Us

Part Number	Tube O/D	Price
PM0812R	12	0.93
PM0815E	15	1.05
PM0822E	22	1.28
PM0828E	28	1.66

End Stop



IA QC: 2107



Full Range Shown Here

Part Number	Tube O/D (mm)	Price
PM4615E	15	2.36
PM4622E	22	2.84

Reducer



IA QC: 2108



Full Range Shown Here

Part Number	Stem O/D (mm) B	Tube O/D (mm) A	Price
PM061512E	15	12	3.04
PM061815E	18	15	3.61
PM062215E	22	15	3.61
PM062218E	22	18	3.61
PM062815E	28	15	5.66
PM062822E	28	22	6.81

Stem Adaptor



IA QC: 2109



Full Range Shown Here

Part Number	Tube O/D (mm)	BSPP Thread	Price
PM051213E	12	3/8"	1.32
PM051214E	12	1/2"	1.47
PM051513E	15	3/8"	1.44
PM051514E	15	1/2"	1.82
PM051814E	18	1/2"	2.01
PM052214E	22	1/2"	2.17
PM052216E	22	3/4"	2.59

U Bend



IA QC: 2110

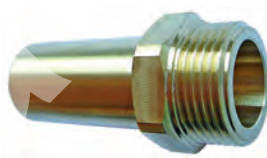


Full Range Shown Here

Part Number	Tube O/D (mm)	Price
PMUB15E	15	4.12



Male Stem Adaptor Brass BSPP/BSPT



IA QC: 2111



Full Range Shown Here

Part Number	Stem O/D (mm)	Male Thread	Price
MM051504N	15	1/2" BSPT	7.60
MM052206N	22	3/4" BSPT	10.67
MM052818N	28	1" BSPP	18.79

Female Stem Adaptor - Brass



IA QC: 2112



Full Range Shown Here

Part Number	Stem O/D (mm)	BSPP Female Thread	Price
MM501514N	15	1/2"	7.60
MM502216N	22	3/4"	11.95

Collet Covers



IA QC: 2113



2 More Variants available online, or Call Us

Part Number	Tube O/D (mm)	Colour	Price
PM1915E	15	Black	0.32
PM1922E	22	Black	0.38

Flexi Joint

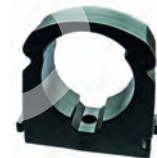


HZ QC: 2116

Full Range Shown Here

Part Number	Tube O/D (mm) 1	Tube O/D (mm) 2	Price
FLEX-15	15	15	20.64
FLEX-22	22	22	23.29

Pipe Clips & Spacers



IA QC: 2117



Full Range Shown Here

Part Number	Tube O/D (mm)	Price
PC15E	15	0.26
PC18E	18	0.28
PC22E	22	0.26
PC28E	28	0.35
PCSE	Spacer	0.19



Pipe Cutter up to 22mm



IA QC: 2118



Full Range Shown Here

Part Number	Description	Pipe Size	Price
JG-TS	Light Duty Plastic Pipe Cutter	Up to 22 mm	39.11

Heavy Duty Pipe Cutter up to 28mm



IA QC: 2119



Full Range Shown Here

Part Number	Description	Pipe Size	Price
JG-HDC	Heavy Duty Plastic Pipe Cutter	Up to 28 mm	79.36

Blade for Heavy Duty Cutter



IB QC: 2120



Full Range Shown Here

Part Number	Price
BLADE-JGHDC	24.90

Tube Cutter - Aluminium



IA QC: 2121



Full Range Shown Here

Part Number	Pipe O/D (mm)	Price
JG-AL-CUTTER15	15	47.04
JG-AL-CUTTER18	18	52.09
JG-AL-CUTTER22	22	52.09
JG-AL-CUTTER28	28	69.75
JG-DEBURR	De-Burr Tool	218.44

Product Drains

MAGY-UL Compact Zero Loss Filter Drain



HL QC: 4616



Full Range Shown Here

Part Number	Description	Price
3902	1/2" Compact Zero Loss Filter Drain	84.35

NUFORS-DC Zero Loss Pneumatic Drain



HL QC: 4617



Full Range Shown Here

Part Number	Description	Price
3803	1/2" Pneumatic Condensate Valve	318.59

KAPTIV-MD Compact Zero Loss Drain



HL QC: 4618



Full Range Shown Here

Part Number	Size	Voltage	Price
3402	1/2"	230vac	234.61

EZ1 Timer Controlled Drain c/w Ball Valve Strainer



HL QC: 4619



Full Range Shown Here

Part Number	Size	Voltage	Price
2301MD	1/4"	240vac	67.92
2302BL	3/8"	230vac	67.92

FLUIDRAIN-COMBO Condensate Timer Drain & BV Strainer



HL QC: 4620



Full Range Shown Here

Part Number	Size	Voltage	Price
2506	1/2"	230vac	91.39
2586	1/2"	24vdc	93.84

Drip Leg Drain - Auto Drain



HM QC: 2057

Full Range Shown Here

Part Number	Port Size	Price
FDLD08	1/2" BSPP	62.78

Product Jointing & Sealing

PTFE Thread Seal Tape



HS QC: 3834



Full Range Shown Here

Part Number	Description	Width (mm)	Roll Length	Price
TAPE	PTFE Thread Tape White	12	12 Mtr	0.42
PTFE25MM	PTFE Thread Tape White	25	12 Mtr	1.92
PTFEGAS	BS.EN.751-3 1997 -60 deg C to +260 deg C.	12	5 Mtr	1.47

Stag A Jointing Paste



HT QC: 1993

Full Range Shown Here

Part Number	Description	Price
STAGA	Jointing Paste -40Deg C to 400 Deg C	35.68

Stag B Jointing Paste



HT QC: 1994

Full Range Shown Here

Part Number	Description	Price
STAGB	Jointing Paste -40 deg C to 650 deg C	36.80

Boss White 400G



HT QC: 1995

Full Range Shown Here

Part Number	Description	Price
GCOM	400G Boss White	4.10

Boss Green 400G



HT QC: 1996

Full Range Shown Here

Part Number	Description	Price
GCOMG	400G Boss Green	9.53

Hank Of Dressed Hemp (used with Paste)

HF QC: 1997



Full Range Shown Here

Part Number	Description	Price
HEMP	Hank Of Dressed Hemp (used with Paste)	7.40

Thread Sealant 280ml for B85 - E85 & Diesel

HU QC: 3848



Full Range Shown Here

Part Number	Size ml	Price
GASOILA2	280	88.33



Nutlock 243 - Oil Tolerant Threadlocker

HV QC: 4688



Full Range Shown Here

Part Number	Size ml	Price
ITM243-10	10	6.45
ITM243-50	50	17.50

Loctite 243 Medium Strength Threadlocker

HW QC: 3849



Full Range Shown Here

Part Number	Pack Size	Price
LOC-135279	10ml	8.50
LOC-135278	50ml	37.52

Studlock 270 Permanent Adhesive

HV QC: 4689



1 More Variant available online, or Call Us

Part Number	Size ml	Price
ITM270-50	50	17.50

Loctite 270 High Strength Threadlocker

HW QC: 3851



Full Range Shown Here

Part Number	Pack Size	Price
LOC-267380	10ml	8.13
LOC-232515	50ml	36.35

Hydraulic Sealer 542

HV QC: 4690



Full Range Shown Here

Part Number	Size ml	Price
ITM542-10	10	6.45
ITM542-50	50	17.50

Loctite 542 Hydraulic Sealant

HW QC: 3847



Full Range Shown Here

Part Number	Pack Size	Price
135483	10ml	8.02
267431	50ml	35.37
267432	250ml	151.72

Pipe Sealant 577

HV QC: 4691



Full Range Shown Here

Part Number	Size ml	Price
ITM577-50	50	23.73
ITM577-250	250	67.85

Loctite 577 Pipe Sealant

HW QC: 3843



Full Range Shown Here

Part Number	Pack Size	Price
229342	50ml	24.50
234573	250ml	98.03

Instant Gasket 574

HV QC: 4692



Full Range Shown Here

Part Number	Size ml	Price
ITM574-50	50	22.37
ITM574-250	250	76.99

Loctite 603 High Strength - Oil Tolerant Retainer

HW QC: 3852



Full Range Shown Here

Part Number	Pack Size	Price
LOC-229873	10ml	7.99
LOC-135280	50ml	36.98

Bearing Fit 641

HV QC: 4695



1 More Variant available online, or Call Us

Part Number	Size ml	Price
ITM641-50	50	21.30

Epoxy Stick 2001

HV QC: 4696



Full Range Shown Here

Part Number	Description	Price
ITM2001-50	Epoxy Putty 50 grms	7.60

Engineers Repair Kit

HV QC: 4697



Full Range Shown Here

Part Number	Description	Price
ITM-EBARK	Engineers Kit	152.15